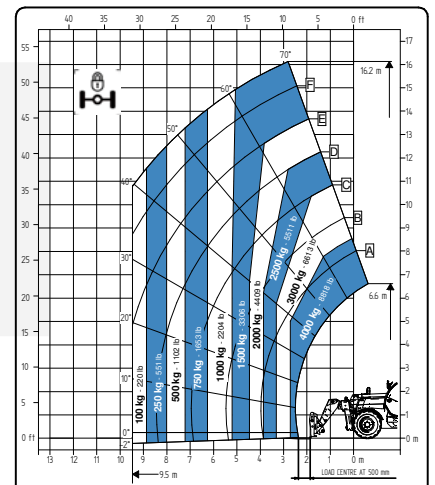
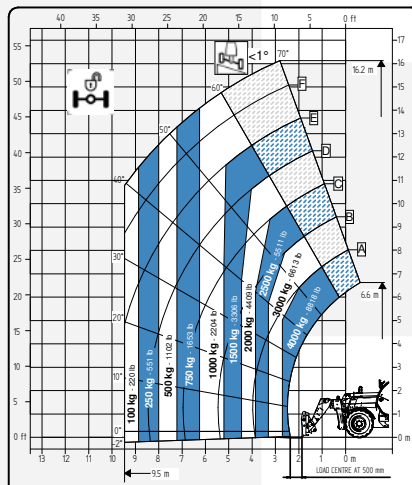
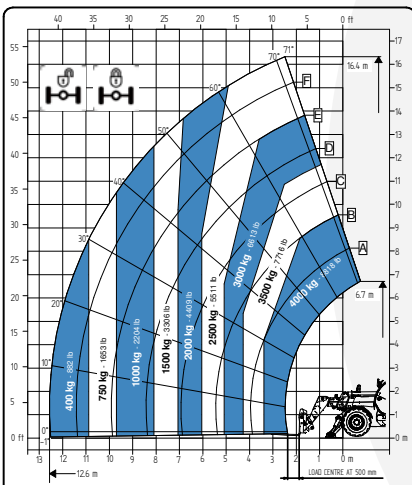


TECHNICAL SHEET

17.40 FULL ELECTRIC



It brings to the attention of all potential customers, all recipients, and to the maximum extent possible, external interlocutors, that Faresin Industries S.p.A. adopts a general Disclaimer regarding the description of the technical and functional characteristics of its machineries, as well as the manner of their use, also with regard to their safety. The Disclaimer must be understood as having a general scope, and therefore Faresin Industries s.p.a. invites to know it, also by accessing the website: www.faresinindustries.com




FARESIN.COM



17.40 FULL ELECTRIC






TECHNICAL FEATURES

| MODELS | | 17.40E |
|---------------------------------|----|---|
| DIMENSIONS | | |
| Height | mm | 2500 |
| Width | mm | 2331 |
| Length | mm | 6520 |
| Cabin width | mm | 960 |
| WEIGHT | | |
| Weight | kg | 12100 |
| DETAILS | | |
| Number of extracting sections | nr | 3 |
| Max capacity | kg | 4000 |
| Max lifting height | m | 16,4 |
| Max horizontal boom extension | m | 12,6 |
| Boom extension at max height | m | 2,5 |
| Swinging Angle | ° | 144 |
| TANK CAPACITY | | |
| Hydraulic oil tank | l | 150 |
| CONNECTION FOR EQUIPMENT | | |
| FH | | ● |
| TYRES | | |
| 405/70 20 | | ● |
| 405/70 24 | | ○ |
| 445/65 R22.5 | | ○ |
| Turning radius | m | 4 |
| BATTERIES AND CHARGERS | | |
| Battery | | 435V (105 Ah) |
| Charging type | v | 220 - 380  |

NOTE: All dimensions defined on model with wheels 405/70 20

| CONFIGURATIONS | | FULL ELECTRIC |
|----------------------------|-------|--------------------------------|
| TRANSMISSION | | |
| Transmission | | electric |
| Speed | km/h | 25 |
| MOTOR | | |
| Transmission | kW | 51 (S1) |
| Hydraulic services | kW | 23 (S1) |
| HYDRAULIC | | |
| Pump type | | gears pump |
| Hydraulic capacity | l/bar | 120/250 |
| Distribution | | flow sharing |
| OTHER | | |
| Joystick | | hydraulic-electro proportional |
| Cabin | | Queen Cab |
| Quick coupling | | ○ |
| Front and rear LED lights | | ○ |
| Floating boom | | ○ |
| Boom suspension | | ○ |
| Manual 6-way diverter | | ○ |
| PEB (Boom Electric Socket) | | ○ |
| Front constant flow | | ○ |
| Bucket mode | | ● |
| SPECIAL FEATURES | | |
| Air conditioning | | ○ |
| Forward buzzer avas | | ○ |
| Farmatics | | FULL (2-5 years) |

● Standard ○ Optional - Not available

| POWER AND BATTERY CAPACITY | | 45 kW/h (105 Ah) |
|---|--------|------------------|
| AUTONOMY STANDARD CYCLE INTENSIVE (eco mode) | | UP TO 3,5 HOURS |
| AUTONOMY STANDARD CYCLE NOT INTENSIVE (eco mode) | | UP TO 8 HOURS |
| CHARGERS  | | |
| STANDARD ON BOARD CHARGER | 0-80% | 4 h |
| POWER INPUT  16 A  400 VAC (3P+N) | 0-100% | 6 h |
| POWER OUTPUT  20 A  435 VDC | | |

*This is a first draft of data, further verification is ongoing