

# Meetmed

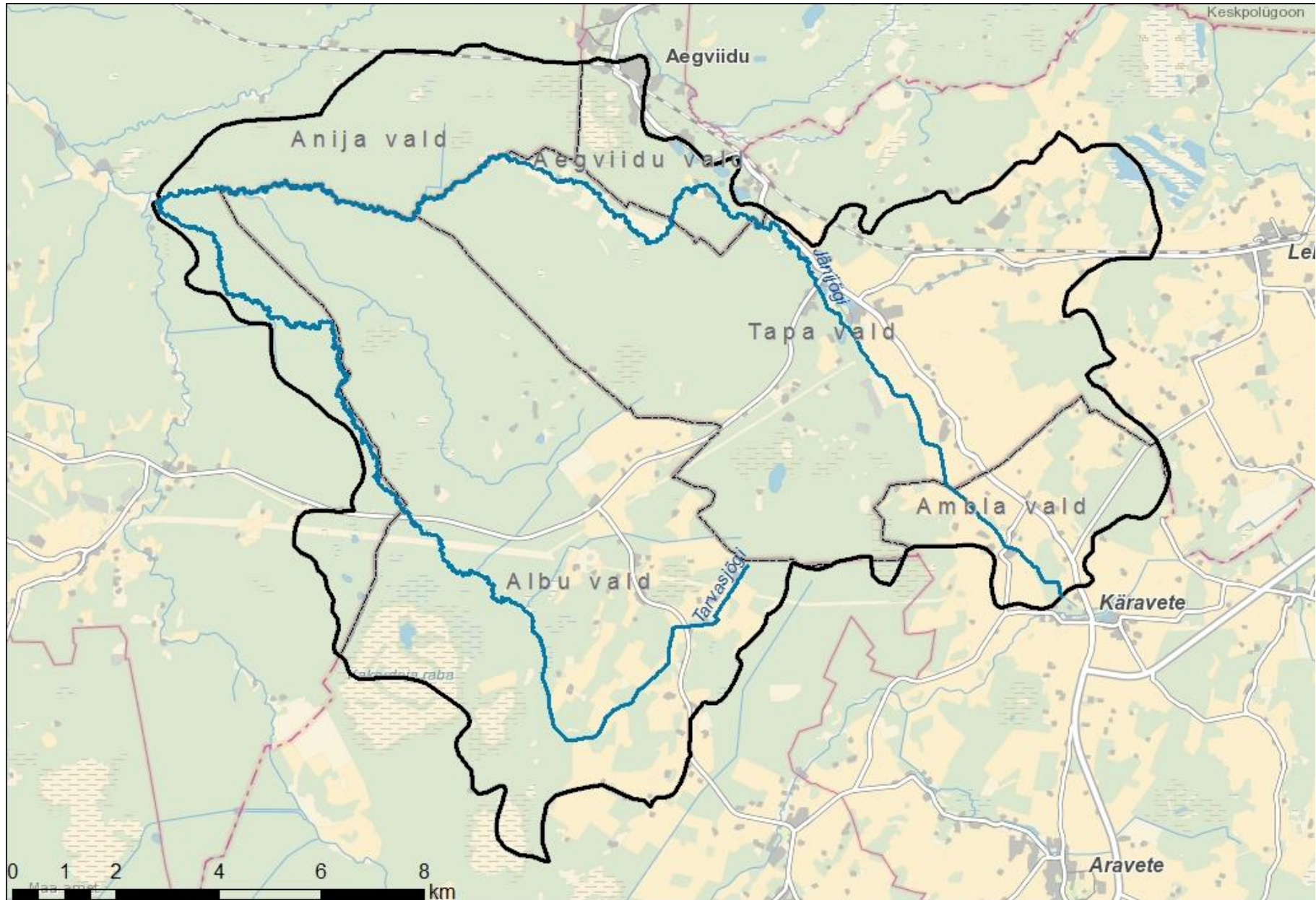
# põllumajandustootjaile:

# Jänijõgi

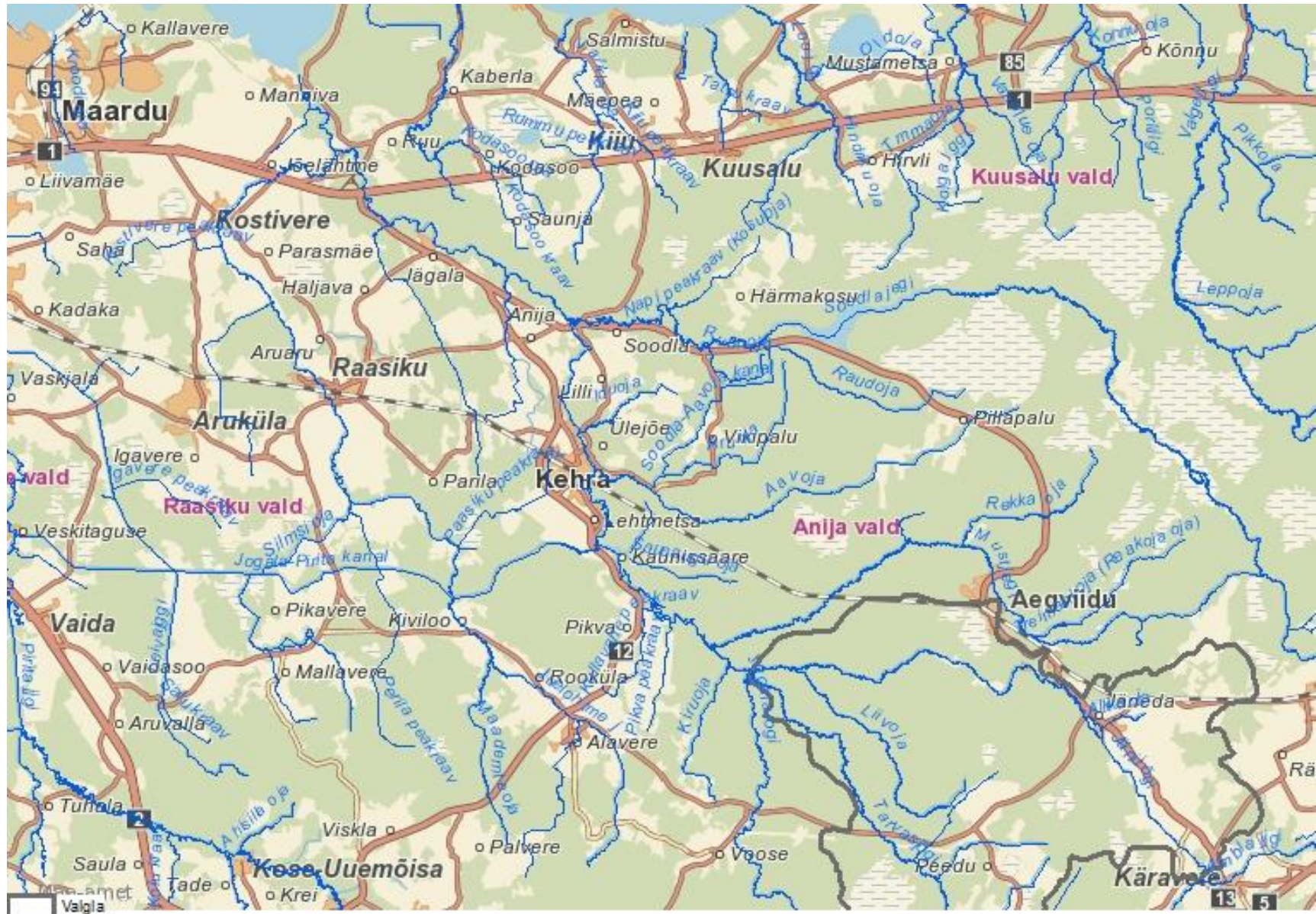
Kristjan Piirimäe

10. – 11. mail Jänedal

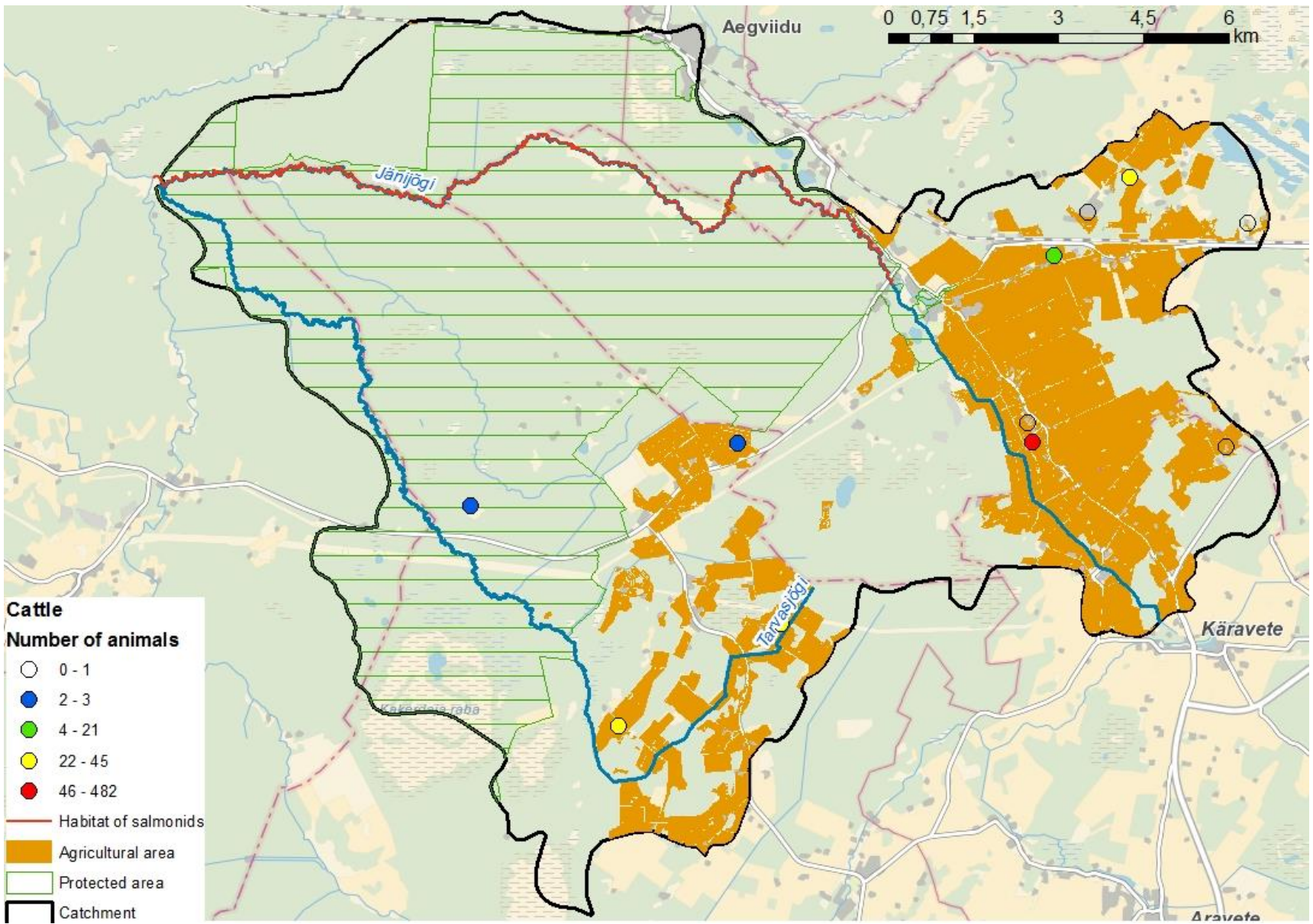
# Jänijõe valgla



# Jänijõgi suubub Jägalasse

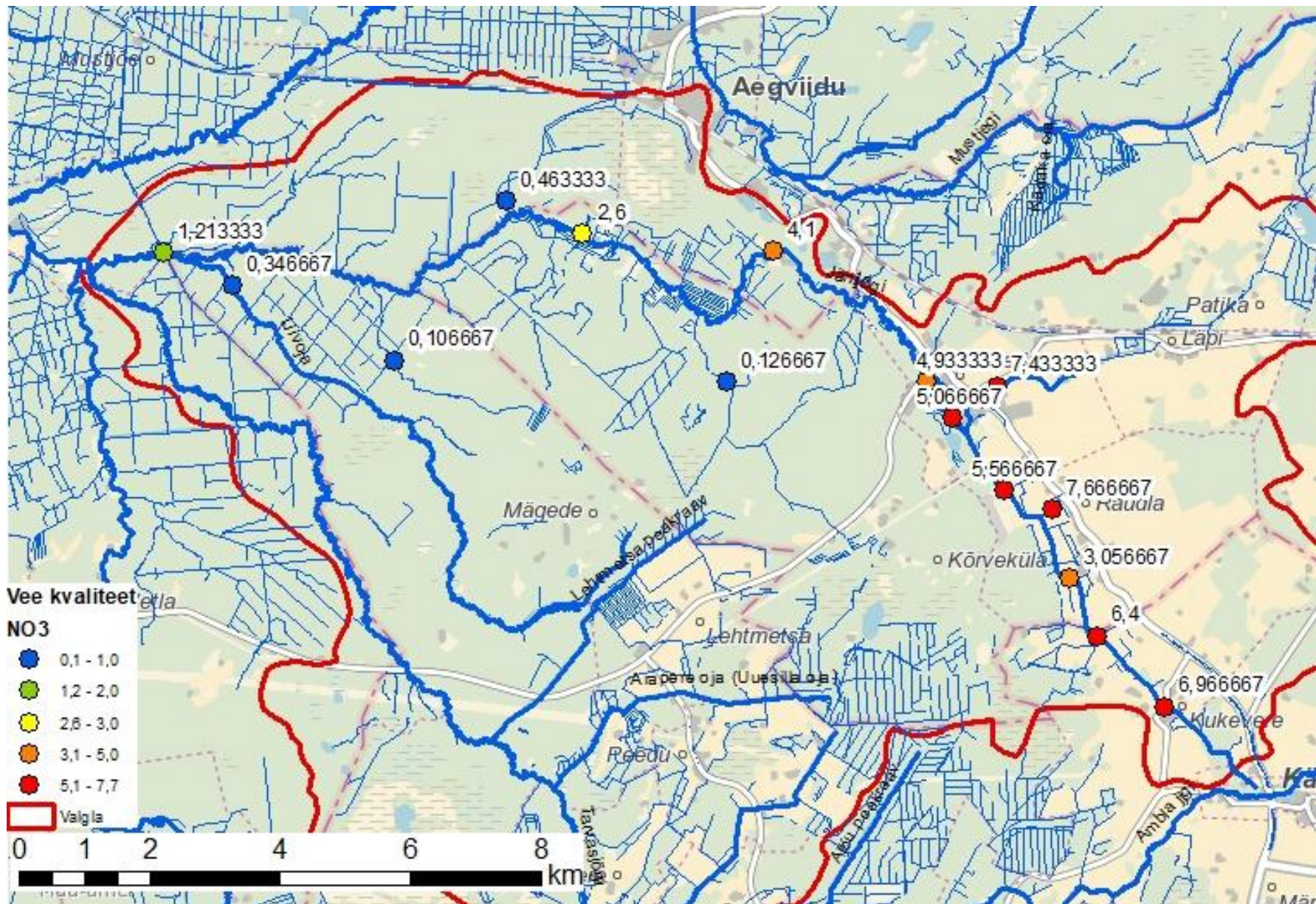


# Jänijõe valgla 2





# NO3

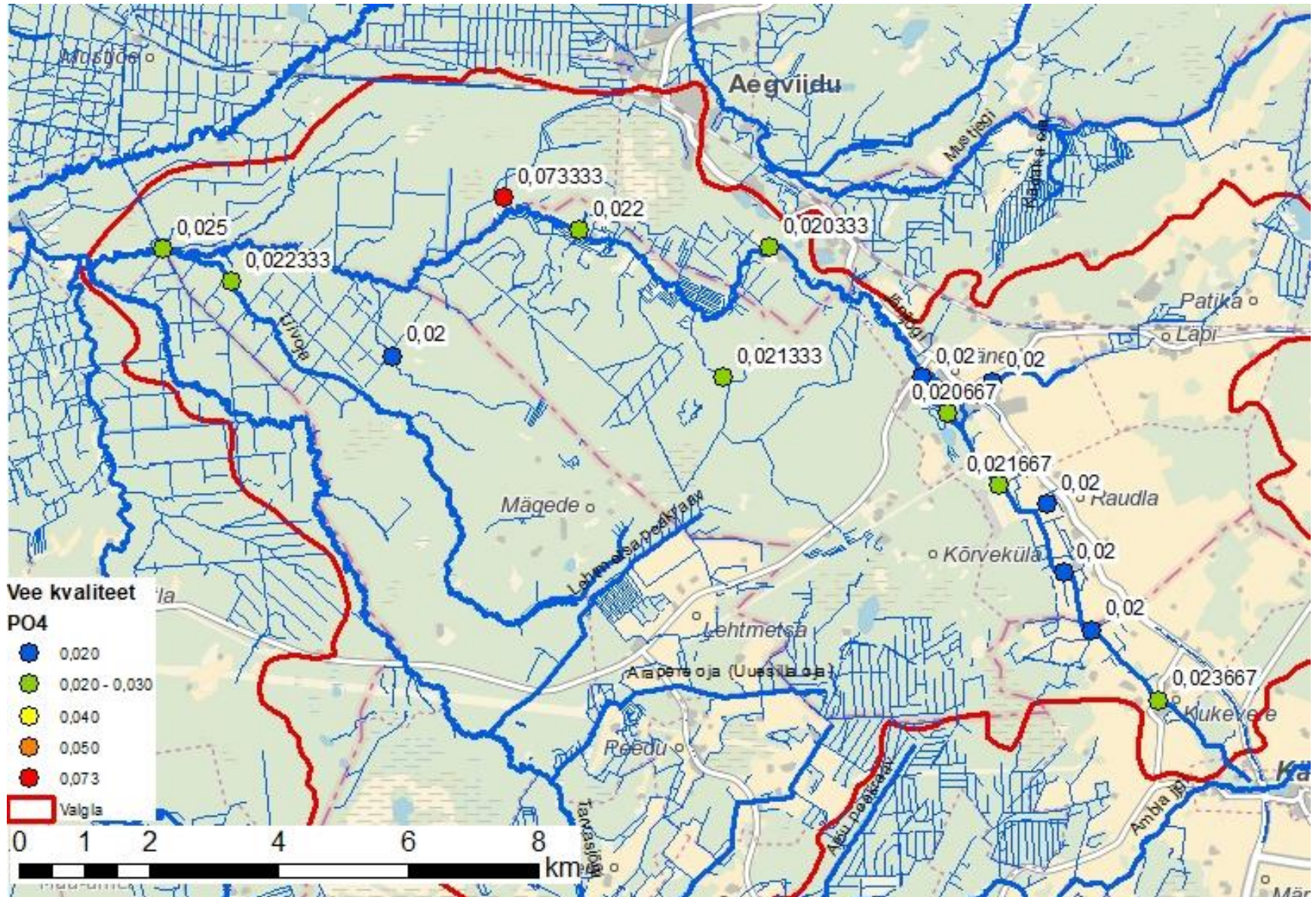






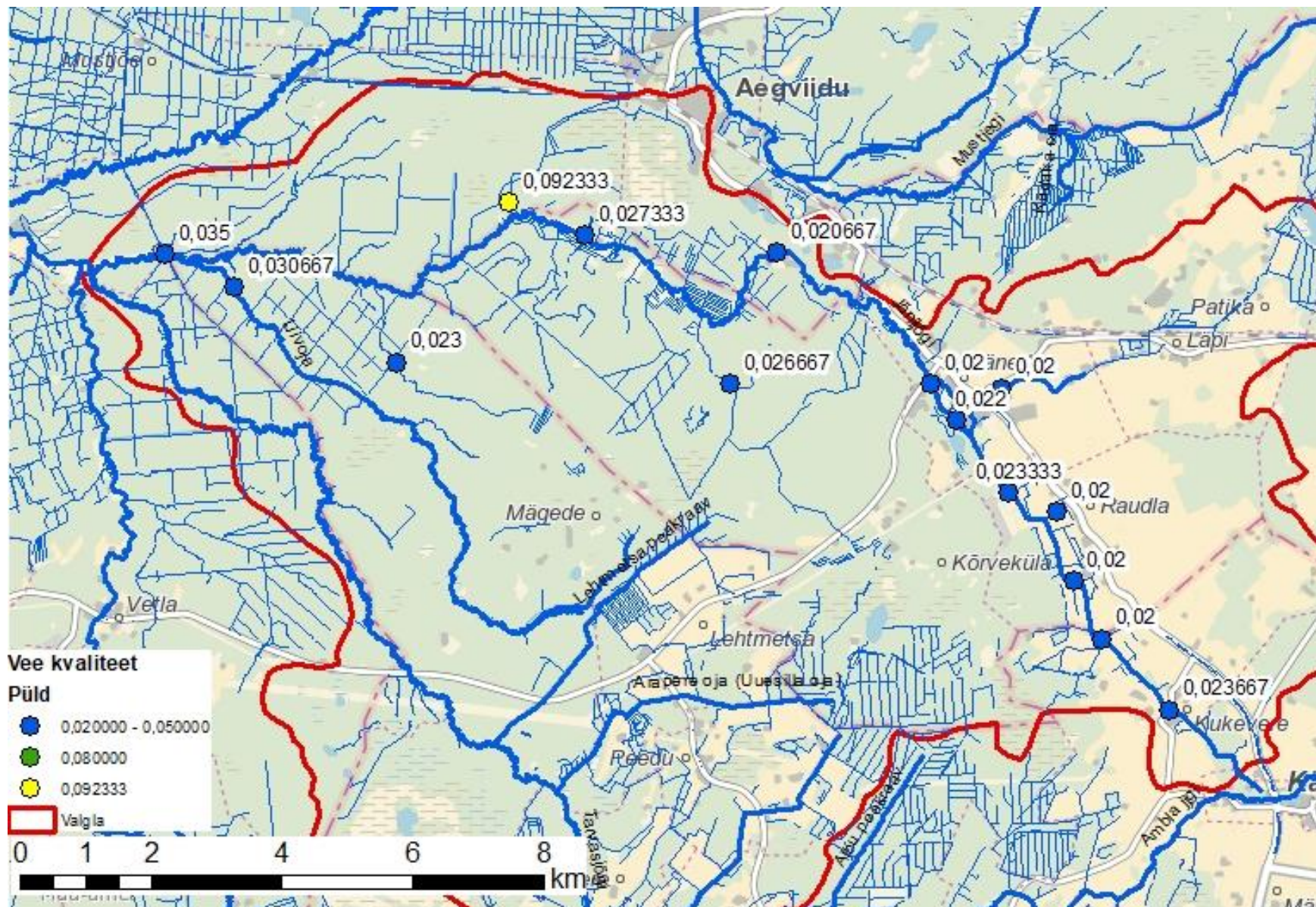
ELF

# PO4

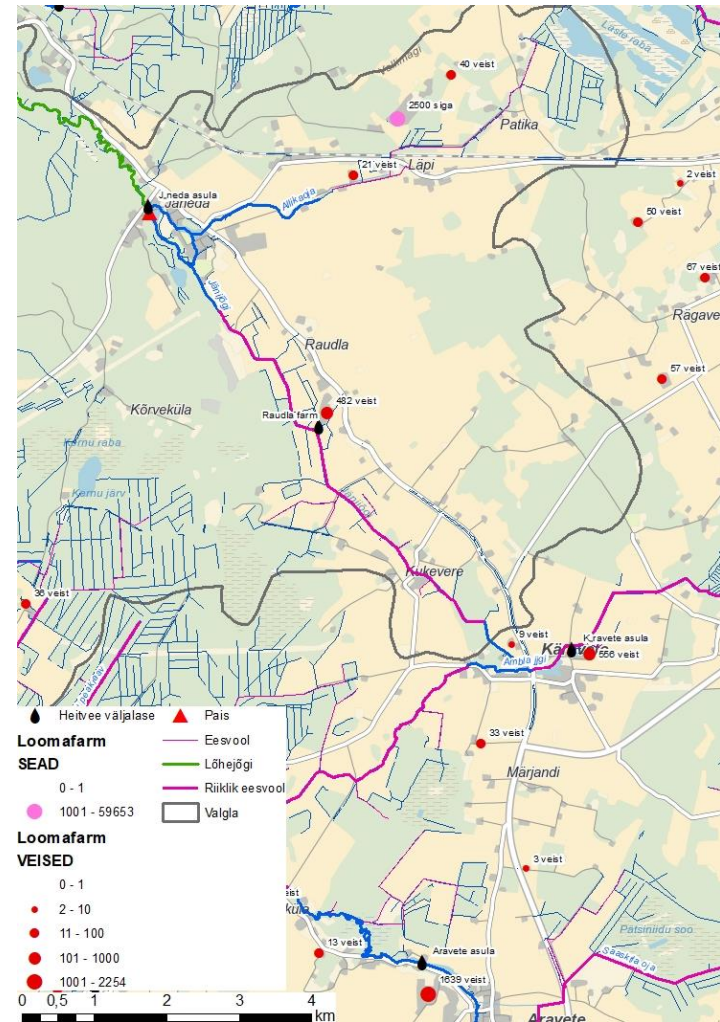
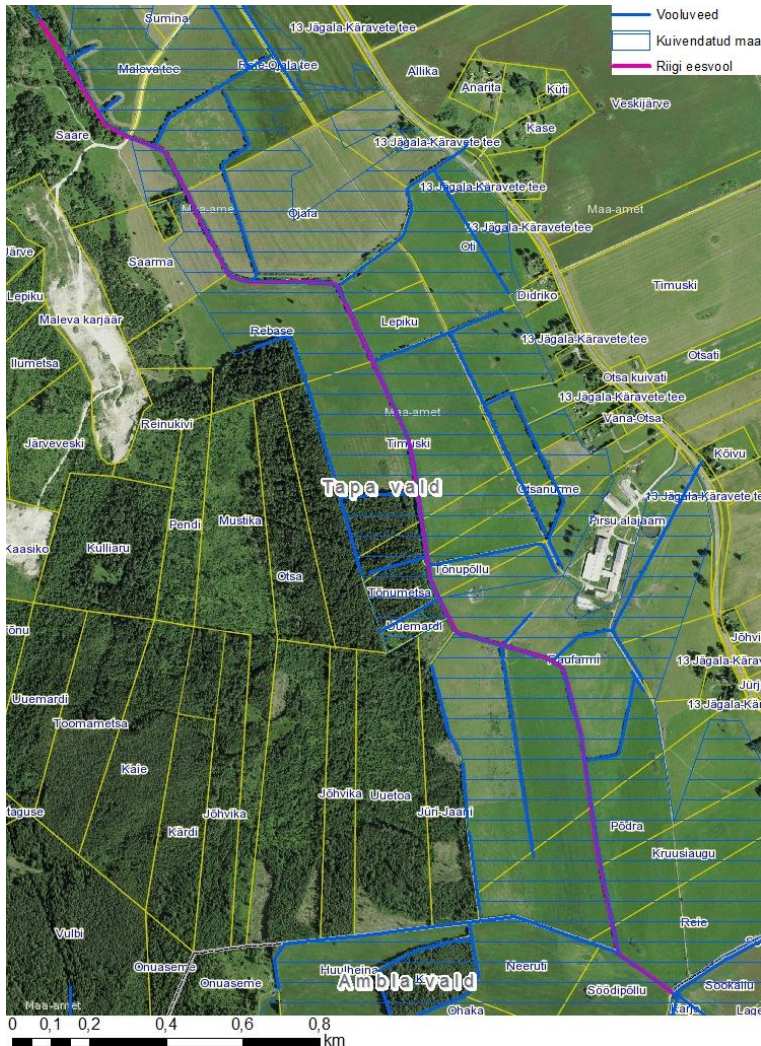




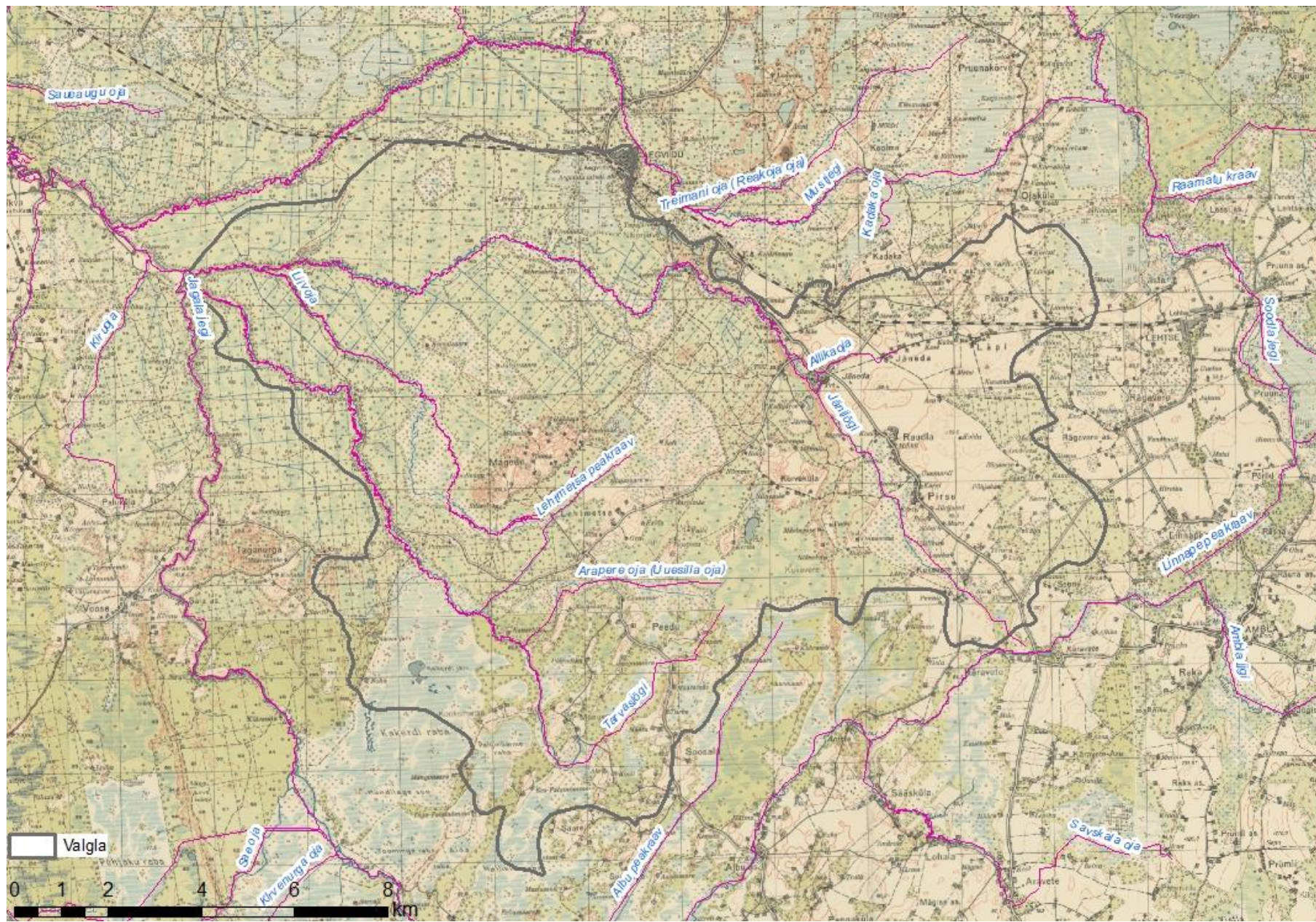
# Üld-P



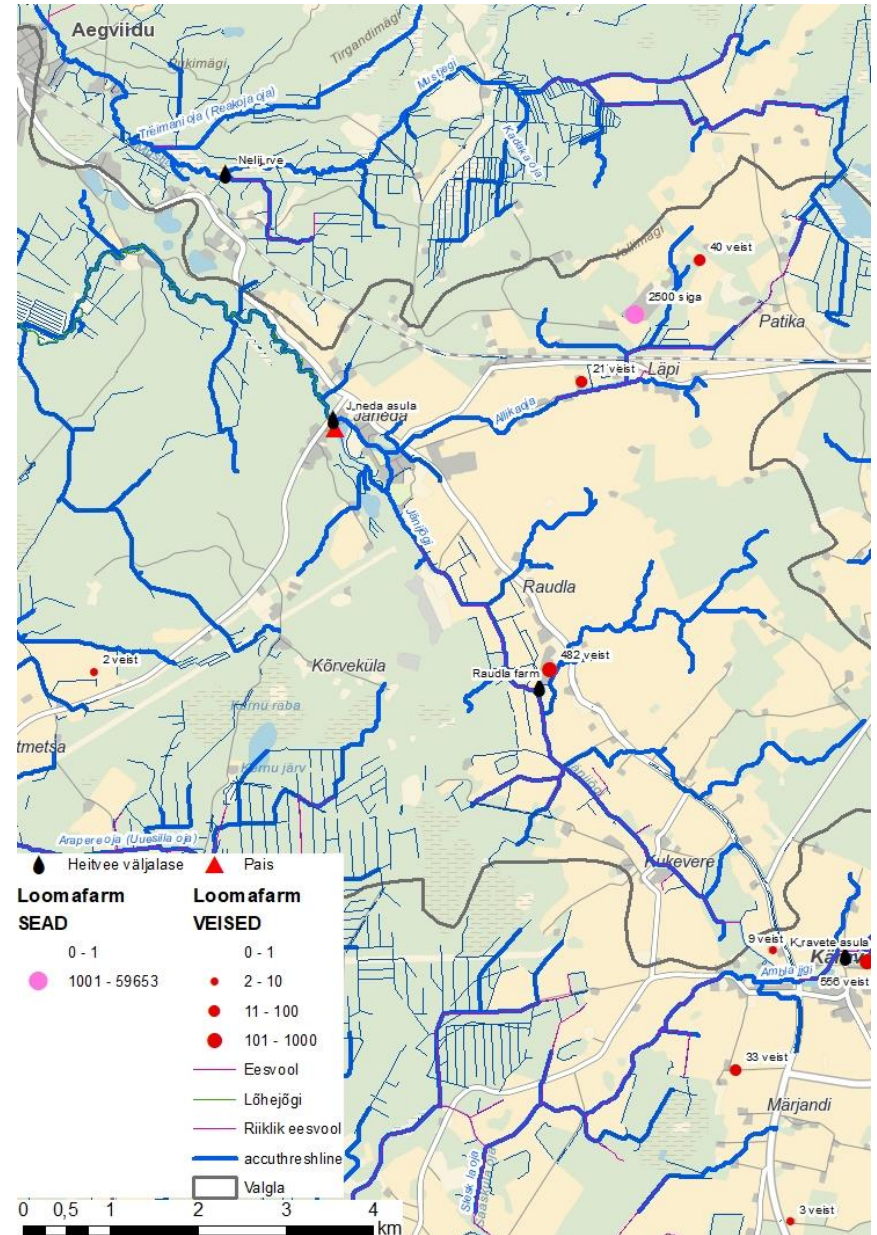
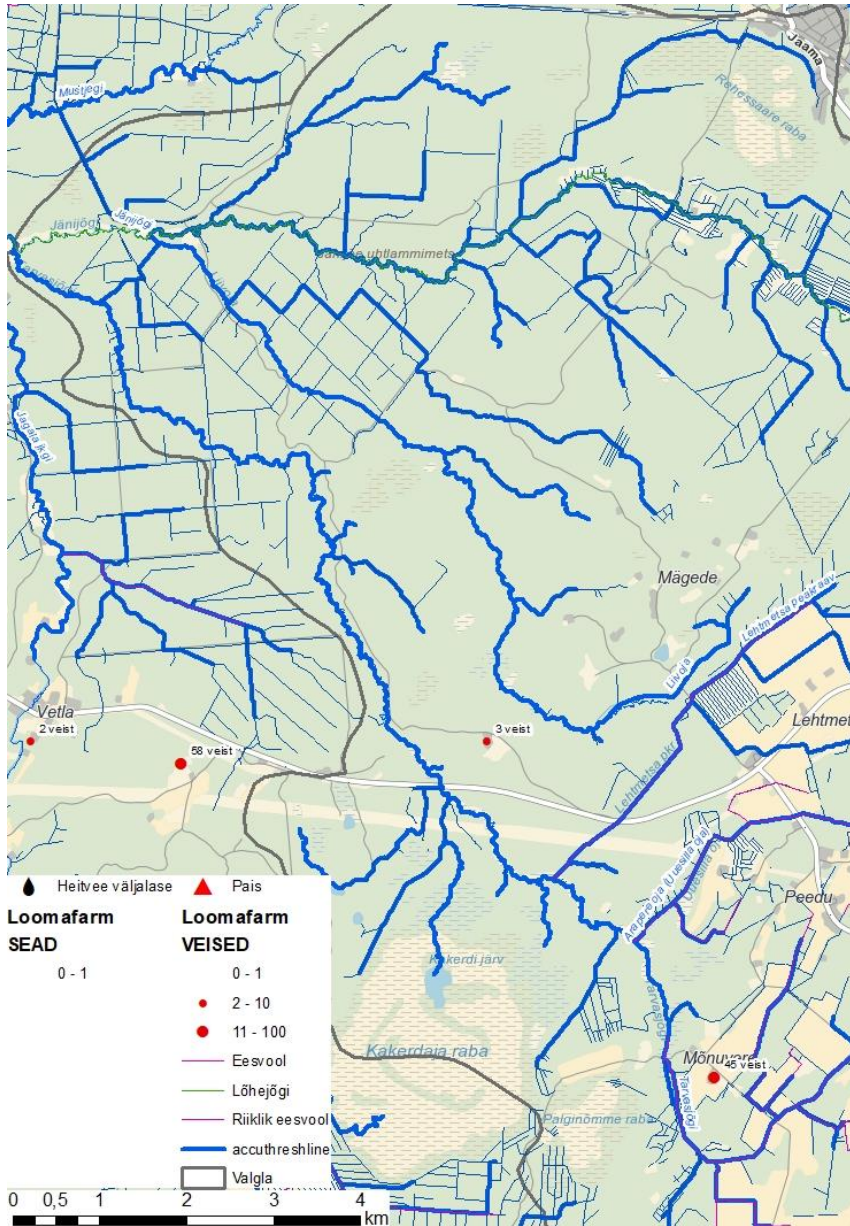
# Põllumajanduslik eesvool



# Ajalooline kaart



# Loomafarmid





# Jäneda paisjärv

Väärtuslik veekogu

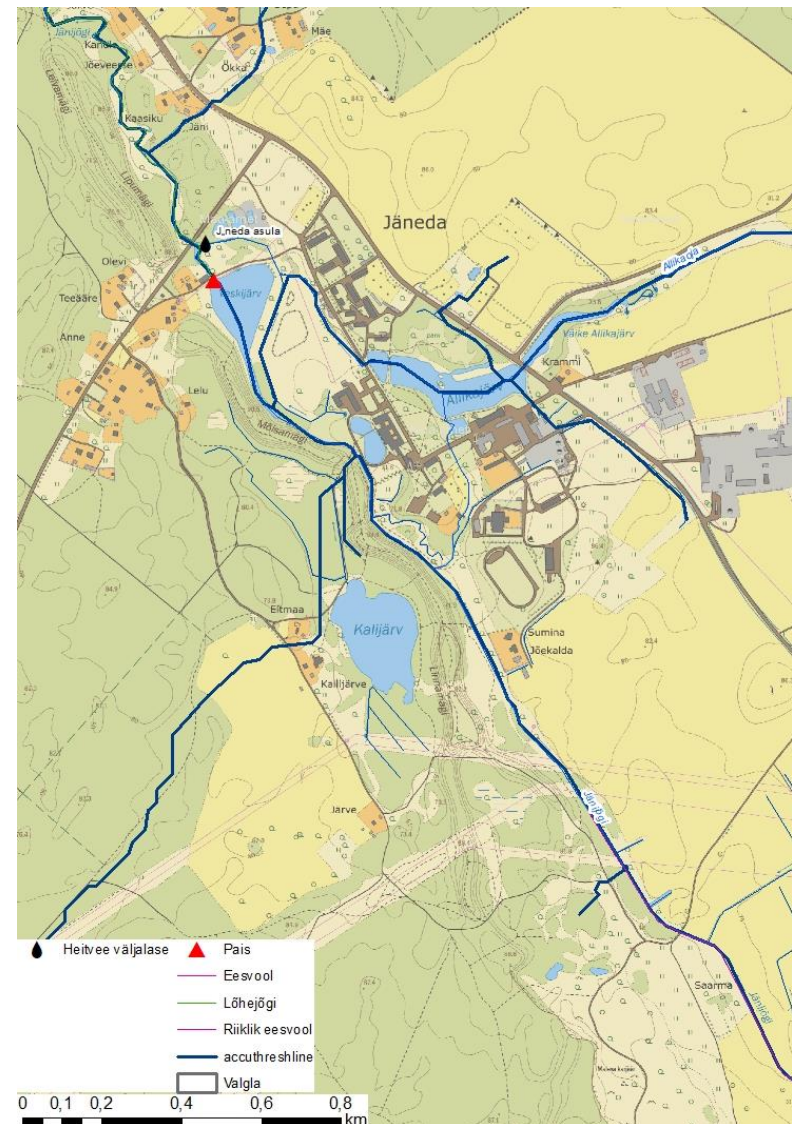
Takistus kaladele

Paisu seisund halb

Toimib puhastina

Muudab äravoolurezhiimi

Vajab regulaarset hooldust



# Uhtlamm

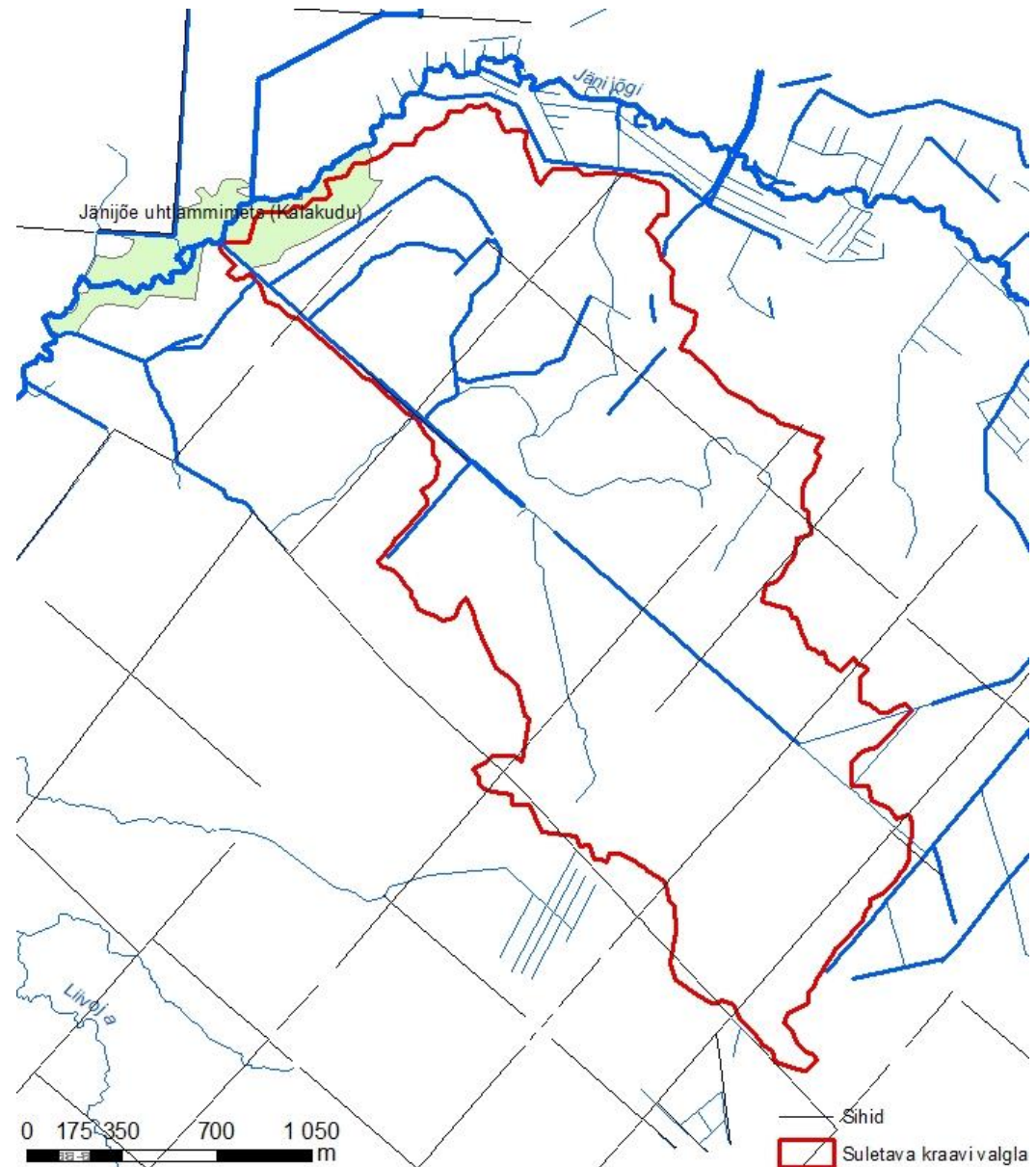
Tohutu elurikkus

Alluviaalsetel setetel

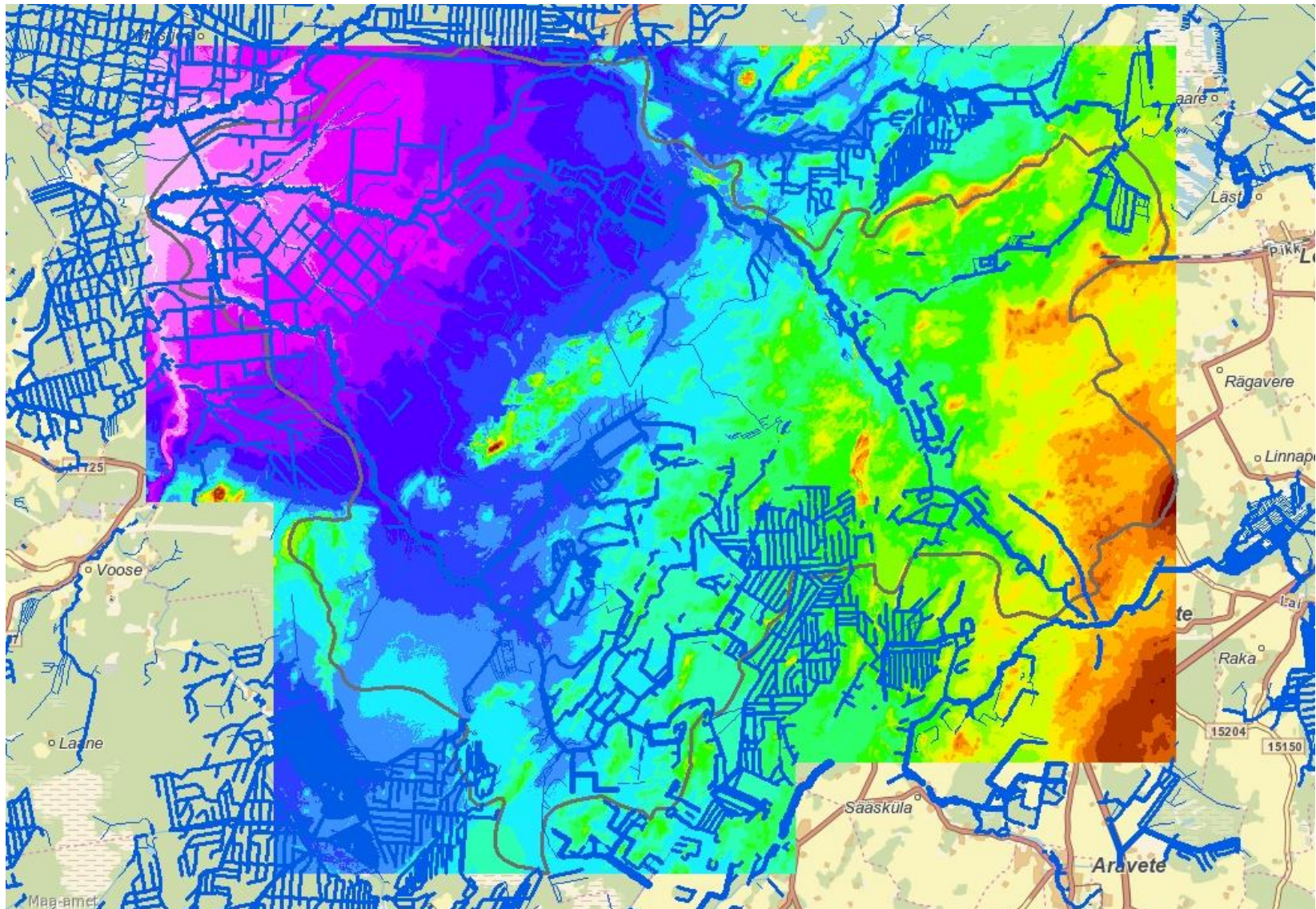
Sõltub hüdroloogilisest režiimist

Kaitsealal, metsad

Kraavitatud

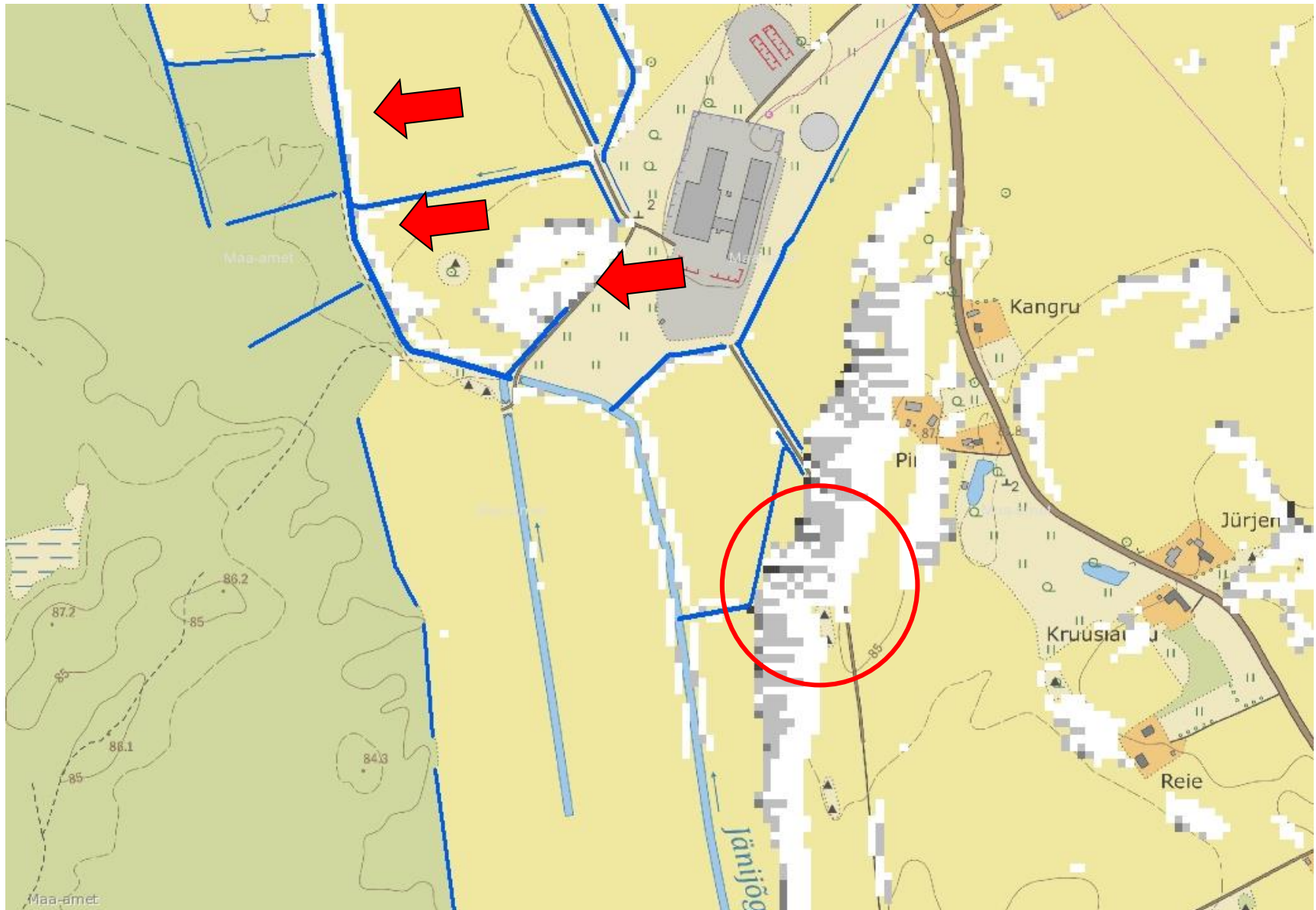


# Erosioonianalüüs 1

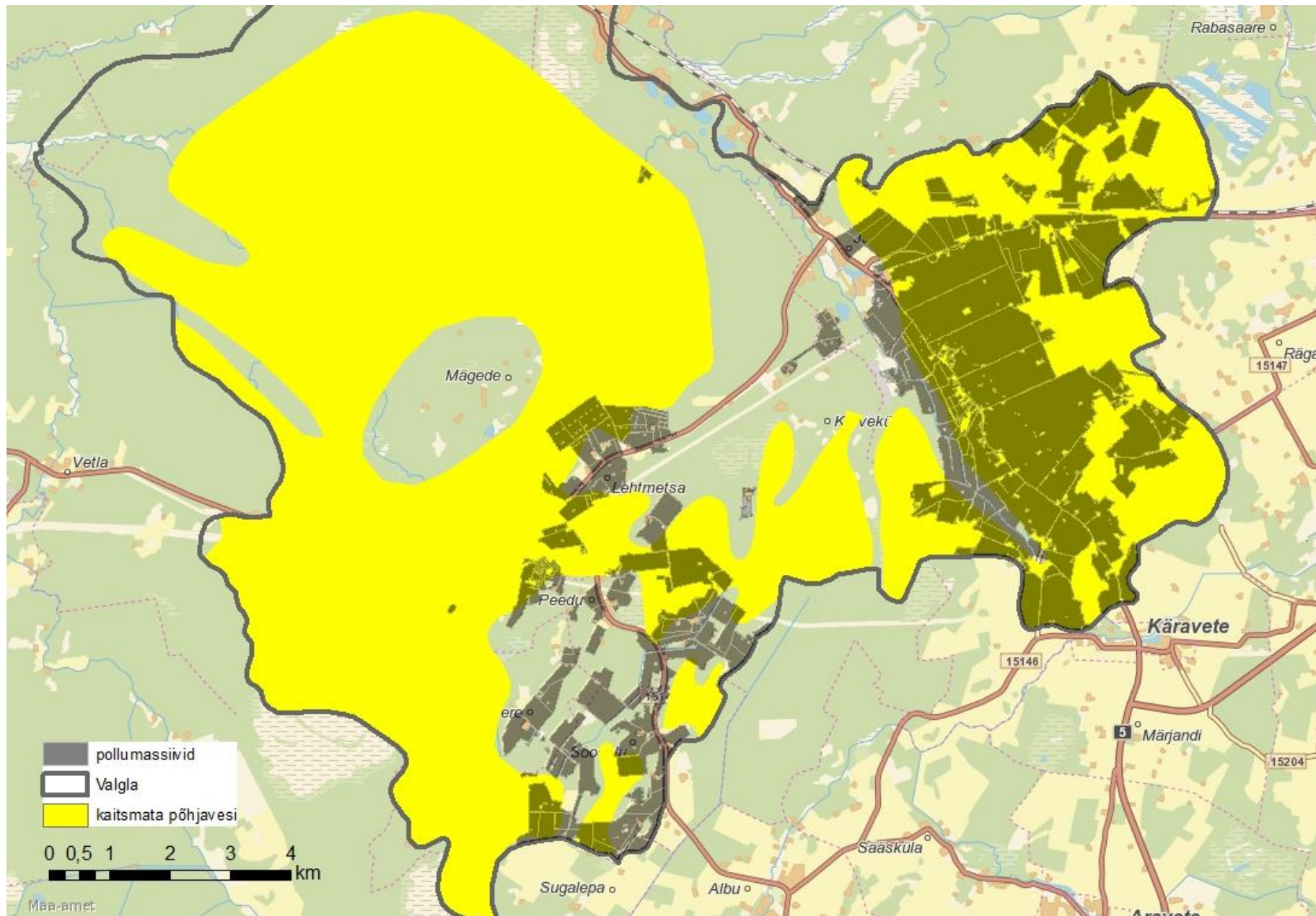




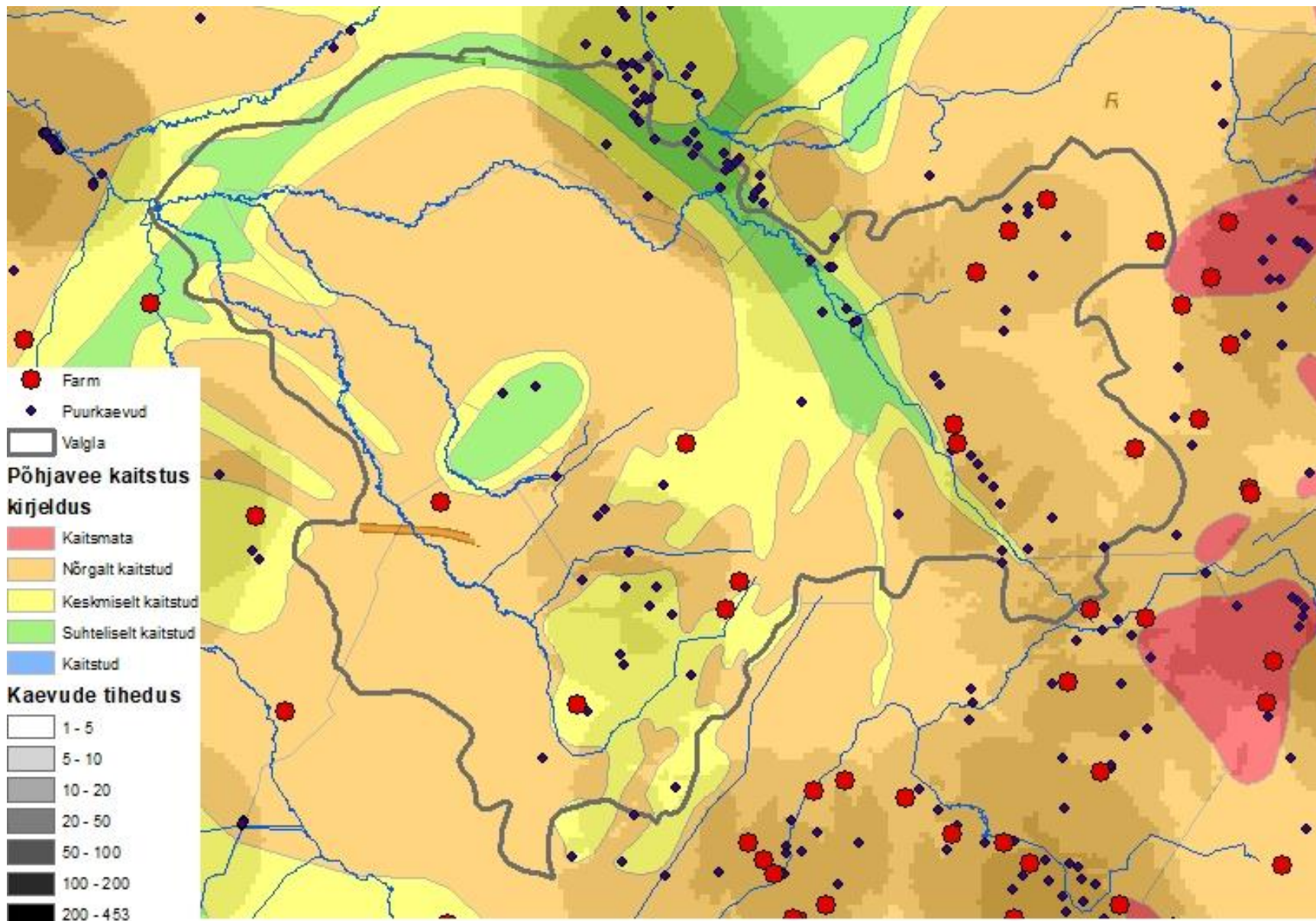
# Erosioonianalüüs 2



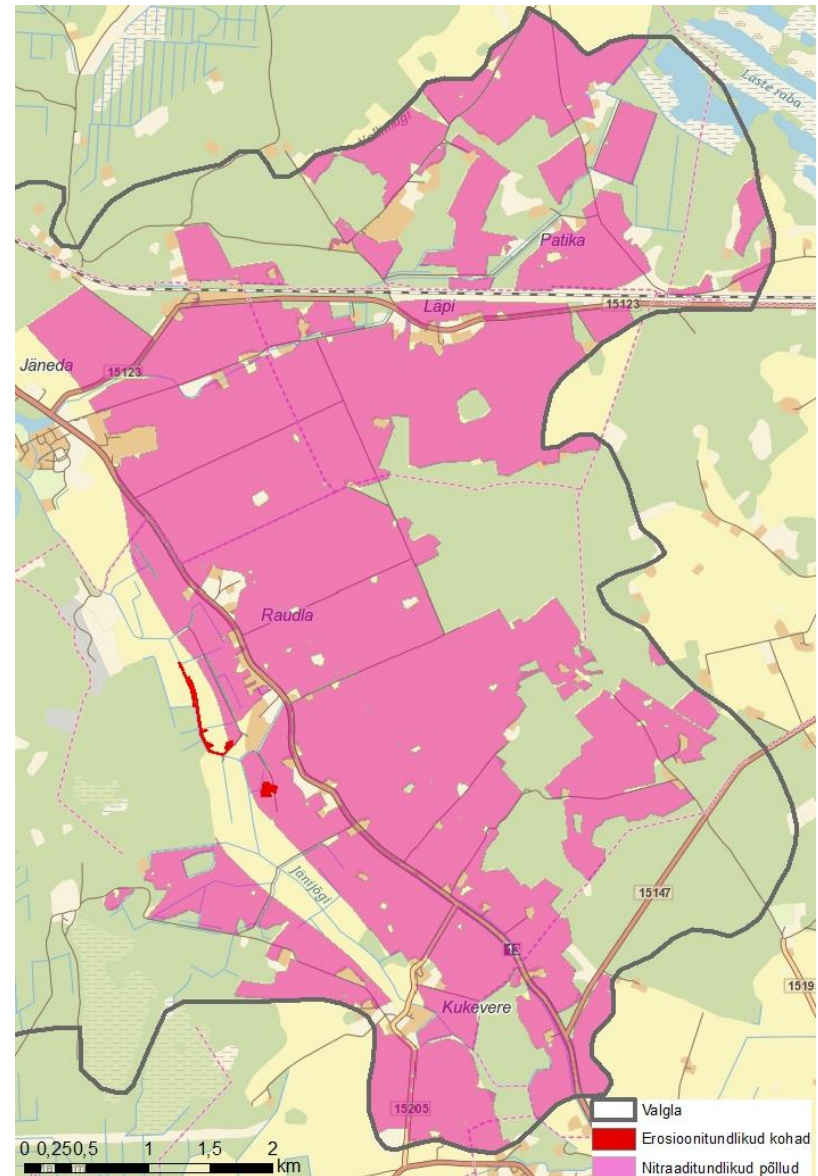
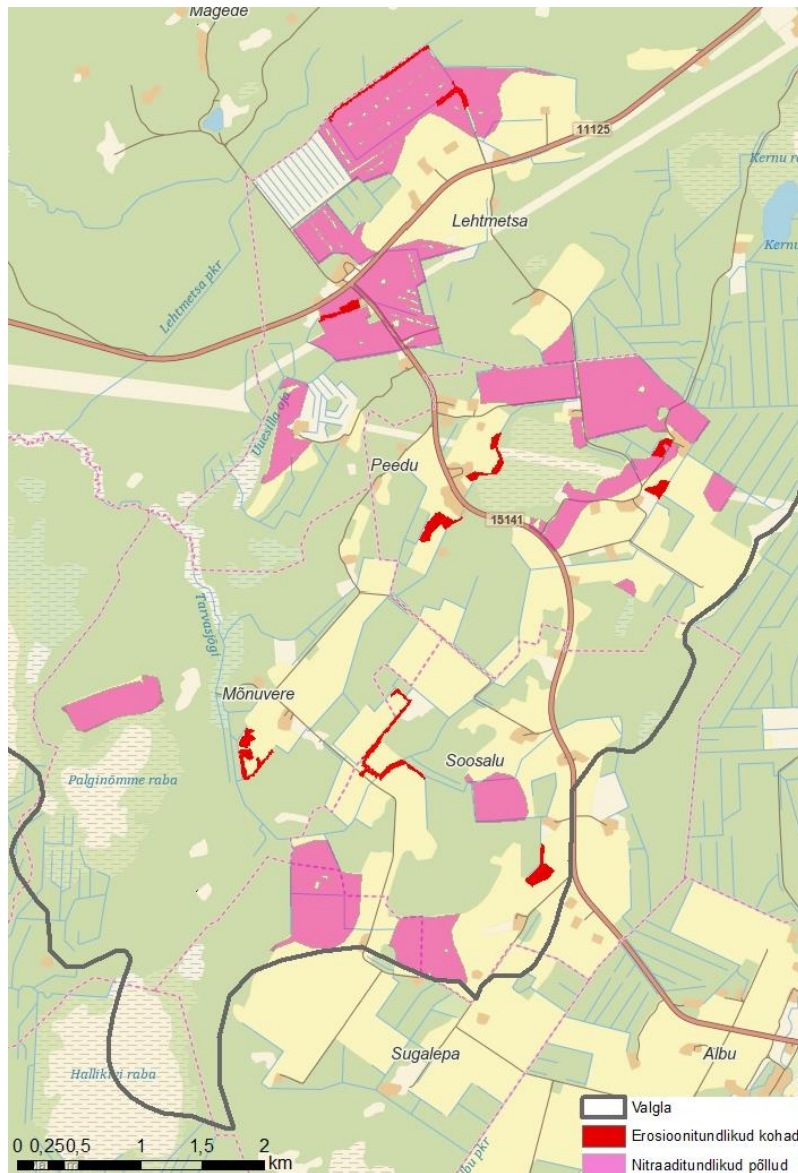
# Leostumisanalüüs



# Puurkaevud



# Meetmed



# Eesvoolu hoiutööd



# Märgalaviljelus?

