



Deliverable 3.2.

COMBINED CONFERENCE REPORT:

- Conference on Exploration and Exploitation of Critical Raw Materials (CRM); Tallinn 2024
- Conference on Social License to Explore (SLE) & Social License to Operate (SLO) and Green Mining Concepts; Tallinn 2025

Author: K. Põldsaar, Geological Survey of Estonia (EGT)



Funded by
the European Union

This project has received funding from the European Union's Horizon Europe research and innovation program under Grant Agreement 101079459

Deliverable Administration

No and name:	WP3 - Deliverable 3.2. Conference reports on exploration and exploitation of critical raw materials (CRMs), Social License to Explore (SLE) & Social License to Operate (SLO) and Green Mining Concepts
Related task in DoA:	WP3 - Task 3.1 Exploration, exploitation and CRM conferences at EGT <ul style="list-style-type: none"> - Action 3.1.1: Conference on exploration and exploitation of critical raw materials (CRM) - Action 3.1.2: Workshop and Conference on Social License to Explore (SLE) & Social License to Operate (SLO) and Green Mining Concepts
Due date of deliverable:	Project Week 32
Submission date:	20.09.2025
Responsible organisation:	EGT
Author name(s):	Kairi Põldsaar
Revision number:	0.1
Status:	Final
Dissemination level:	Public

Revision History

Version	Date	Modified by	Comments
0.1	20.09.2024	Kairi Põldsaar	Final version

Disclaimers

- Views and opinions expressed in this deliverable are those of the author(s) only and do not necessarily reflect those of the European Union or European Research Executive Agency (REA). Neither the European Union nor the granting authority can be held responsible for them.
- UK participants in Horizon European Project EGT-TWINN are supported by UKRI grant 10039270 (British Geological Survey).

Contents

List of Figures.....	4
List of Tables.....	4
EGT-TWINN Project in Brief.....	5
1. Introduction.....	6
2. Action 3.1.1 – Conference on Exploration and Exploitation of Critical Raw Materials	7
3. Action 3.1.2 – Workshop & Conference on Social License to Explore/Operate (SLE/SLO)	10
4. Communication, Dissemination and Exploitation (CDE)	12
5. Combined Conclusions and Impact	13
Acknowledgements	14
Annex 1. CRM conference program	15
Annex 2. SLO conference program.....	19

List of Figures

Figure number	Figure Caption
Figure 1	Banner visualising the official design of the CRM conference
Figure 2	EGT director Sirli Sipp Kulli giving the opening speech at the CRM conference
Figure 3	The conference facilitated engaging discussions amongst the participants
Figure 4	Participants viewing the Estonian phosphorite drill core on the trip to the EGT Arbavere Core Center
Figure 5	Special poster created for the purposes of the CRM conference field trip, but later used for further educational purposes to introduce the Estonian phosphorite resources
Figure 6	Participants of the EGT and the Estonian Ministry of Climate engaging in a SLO board game at the pre-conference SLO workshop led by Toni Eerola from GTK
Figure 7	Banner visualising the official design of the SLO conference
Figure 8	Estonian Parliament member and former Minister of Environment, Yoko Alender, opening the conference
Figure 9	Premiere of the European Lithium Paradox documentary at the last session of the conference

List of Tables

Table number	Heading
Table 1	Overview of EGT-TWINN Task 3.1 conferences

EGT-TWINN Project in Brief

The EGT-TWINN project received funding through the Horizon Europe HORIZON-WIDERA-2021-ACCESS-03 call. It aims to enhance research and technical capacity at the Geological Survey of Estonia (EGT) to accelerate Estonia's transition from fossil fuel to green energy. The project focuses on developing state-of-the-art geological, geochemical and geophysical survey skills, data management workflows, and subsurface modelling capability for exploration and geological resource assessment (including critical raw materials and geothermal energy) at EGT.

The EGT geological capacity enhancement is implemented via a range of joint activities such as scientific conferences and exchanges as well as through the delivery of specialized training programs provided by three leading geological surveys in Europe – the Geological Survey of Finland (GTK), the British Geological Survey (UKRI/BGS) and the Geological Survey of Denmark (GEUS). A further partner is the University of Oulu (UOULU), more specifically the Oulu Mining School (OMS), which provides a unique state-of-the-art platform for mining-related research and education.

The project contributes to the development of multidisciplinary research and innovation in geological studies in Estonia. It enables EGT to enhance its personnel's scientific excellence and collaborate with experts from leading international research institutions. One of the project priorities is to support early-career researchers at EGT who will gain state-of-the-art experience in the geology fields crucial to Estonia.

Project partners



EESTI
GEOLLOOGIAATEENISTUS



British
Geological
Survey



GEUS



UNIVERSITY
OF OULU



GTK



Funded by
the European Union

This project has received funding from the European Union's Horizon Europe research and innovation program under Grant Agreement 101079459

1. Introduction

Work Package (WP) 3 of the EGT-TWINN project (“Networking of Excellence”) aims to strengthen the international research capacity of the Geological Survey of Estonia (EGT) by fostering dialogue and collaboration with leading partners in Europe.

Task 3.1 of this WP was dedicated to organising high-level conferences on mineral resources, covering both the technical and social dimensions of exploration and exploitation.

Two major international events were carried out under this task (see also Table 1):

- **Action 3.1.1: Conference on Exploration and Exploitation of Critical Raw Materials (CRM)** held in October 2024 in Tallinn with a field visit to the Arbavere Georesources Research Centre.
- **Action 3.1.2: Workshop and Conference on Social Licence to Explore (SLE), Social Licence to Operate (SLO), and Green Mining Concepts** held in September 2025 in Tallinn and Arbavere.

Together, these actions addressed the dual challenge of securing access to critical raw materials for the green transition, while ensuring that exploration and mining activities gain and maintain societal acceptance.

Table 1. Overview of EGT-TWINN Task 3.1 conferences

Event	Date & Venue	Participants	Key Themes	Special Features
CRM Conference (Action 3.1.1)	7–8 Oct 2024, Tallinn + 9 Oct Arbavere	155 (84 onsite, 71 online)	CRM exploration, sedimentary basins, new techniques, processing, ESG	Field visit to Arbavere; phosphorite educational poster
SLO/SLE Workshop & Conference (Action 3.1.2)	15–16 Sept 2025, Arbavere & Tallinn	15 (workshop), 74 (conference)	SLO/SLE concepts, stakeholder engagement, NGO and governance perspectives, case studies	Roleplay workshop; <i>European Lithium Paradox</i> film screening

2. Action 3.1.1 – Conference on Exploration and Exploitation of Critical Raw Materials

The **Conference on the Exploration and Exploitation of Critical Raw Materials: Focus on Northern Europe** took place on 7–8 October 2024 at the Hestia Hotel Europa in Tallinn, followed by a field trip to the Arbavere Research Centre on 9 October (see Annex 1 for full program).



Figure 1. Banner visualising the official design of the CRM conference

The event attracted **155 participants** (84 onsite, 71 online) from across Europe and beyond. Representatives included geological surveys, universities, government institutions, private companies, and the European Commission, underlining the breadth of interest in CRMs. This strong mix of academia, government, and business created a platform where science, policy, and practice could meet.

The program covered the full value chain of CRMs through five thematic sessions:

- Exploration and exploitation in Northern Europe and the Baltic States
- CRM potential in sedimentary basins (including phosphates)
- New exploration techniques, such as machine learning and remote sensing
- Processing, valorisation, and circular solutions for mine tailings
- Environmental, social, and governance (ESG) aspects of CRM production

Keynotes from the European Commission, the Geological Survey of Sweden, the Geological Survey of Finland, and the University of Oulu highlighted both policy frameworks and scientific advances. Special attention was given to Estonia's phosphorite deposits and crystalline basement as potential CRM resources, sparking debate on their possible role in the European raw materials strategy.



Figure 2. EGT director Sirli Sipp Kulli giving the opening speech at the CRM conference



Figure 3. The conference facilitated engaging discussions amongst the participants

Field excursion and special poster

The field excursion to Arbavere gave participants hands-on exposure to phosphorite deposits and drill cores, linking theory to practice. The excursion also launched a **special poster on Estonian phosphorite**, designed to visually communicate the genesis, deposition, deposit fields, and geochemistry of these resources. The poster now serves as a permanent exhibit at the Arbavere Research Centre and will be reused for future educational and outreach purposes, ensuring a long-term legacy from the conference.



Figure 4. Participants viewing the Estonian phosphorite drill core on the trip to the EGT Arbavere Core Center

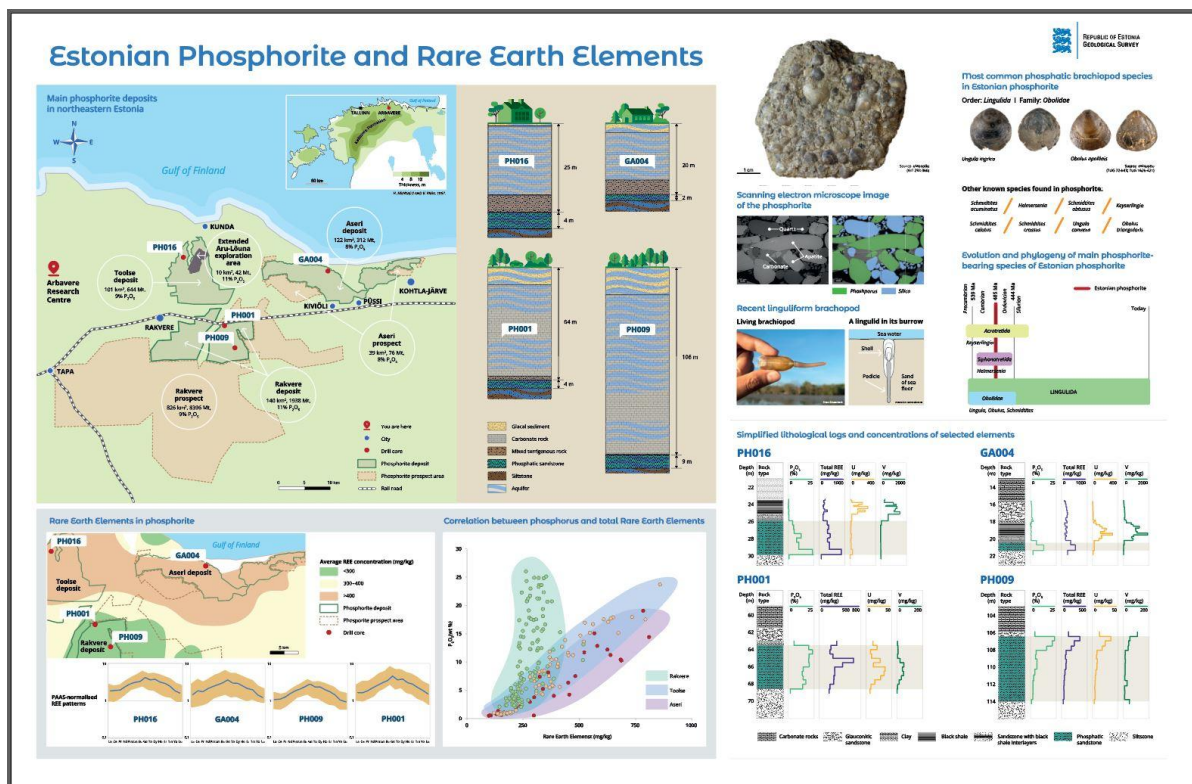


Figure 5. Special poster created for the purposes of the CRM conference field trip, but later used for further educational purposes to introduce the Estonian phosphorite resources

3. Action 3.1.2 – Workshop & Conference on Social License to Explore/Operate (SLE/SLO)

On 15 September 2025, a **workshop on SLO/SLE and Green Mining Concepts** was held at Hesti Hotel Europa, Tallinn. It brought together 15 staff members from EGT and the Estonian Ministry of Climate, with training led by experts from the Geological Survey of Finland. The participatory format combined lectures, group work, and roleplay exercises, allowing participants to practice stakeholder engagement methods and simulate real-world challenges. The workshop succeeded in building capacity among Estonian professionals and provided a shared understanding of how SLO principles could be applied nationally.



Figure 6. Participants of the EGT and the Estonian Ministry of Climate engaging in a SLO board game at the pre-conference SLO workshop led by Toni Eerola from GTK

The following day, **the International Conference on Social Licence to Operate and Green Mining Concepts** was held in Tallinn with **74 participants** from nine countries. The participant mix included geological surveys, universities, companies, NGOs, and government institutions, ensuring a rich interdisciplinary dialogue (see Annex 2 for full program).



Figure 7. Banner visualising the official design of the SLO conference



Figure 8. Estonian Parliament member and former Minister of Environment, Yoko Alender, opening the conference

The program featured keynote talks on SLO concepts, governance frameworks, NGO perspectives, community benefit agreements, and private sector experiences. Estonian research was represented with presentations on public attitudes toward phosphorite exploration and the role of labour market transitions. Nordic and European experts contributed case studies from Finland, Sweden, and EU-funded projects.

A highlight of the event was the screening of the documentary *The European Lithium Paradox*, introduced remotely by Peter Tom Jones. The film was widely praised for its balanced treatment of sensitive issues and sparked lively discussion on the importance of communication and storytelling in shaping public perceptions.



Figure 9. Premiere of the European Lithium Paradox documentary at the last session of the conference

The conference closed with reflections on the need for transparent governance, inclusive dialogue, and practical engagement tools. It succeeded in creating a rare cross-sectoral conversation in Estonia, bringing together policymakers, industry, NGOs, and researchers around the shared challenges of responsible mineral exploration.



4. Communication, Dissemination and Exploitation (CDE)

Both conferences under Task 3.1 were designed not only as internal capacity-building activities but also as visible, outward-facing events for the wider research, policy, and stakeholder community.

Communication

The events were promoted through the EGT-TWINN website and social media channels, and updates were shared in real time during the conferences. Key moments such as the film screening, poster exhibition, and field visit were documented and distributed to raise awareness among both national and international audiences.

Dissemination

Conference materials have been made publicly available online to ensure long-term access:

CRM Conference: <https://www.tilmeld.dk/crmtallinnconference2024/>

- SLO Conference: slo-tallinn.com
- Video recordings: <https://www.youtube.com/@EGT-TWINN>
- General overview: <https://egt-twinn.voog.com/> (materials available under the “Conferences” section)

The abstract books, presentation slides, and video recordings provide an open knowledge base for researchers, policymakers, and the public. The special phosphorite poster created for the CRM conference continues to serve as a permanent educational resource at the Arbavere Georesources Research Centre.

Exploitation

The knowledge gained and networks built during these events are being actively carried forward. For EGT and Estonian stakeholders, the results will feed into:

- Strategic planning for CRM exploration and mapping,
- Development of stakeholder engagement toolkits and practices,
- Preparation of future collaborative projects and policy dialogues at the Baltic-Nordic-European level.



5. Combined Conclusions and Impact

The two events under Task 3.1 were complementary in scope and impact. The **CRM conference** addressed the technical, economic, and policy aspects of critical raw materials, showcasing advances in exploration methods and resource potential in Northern Europe and the Baltic States. The **SLO/SLE conference** emphasised the societal dimension, highlighting how exploration and mining projects must engage transparently with communities, NGOs, and governance frameworks.

Together, they:

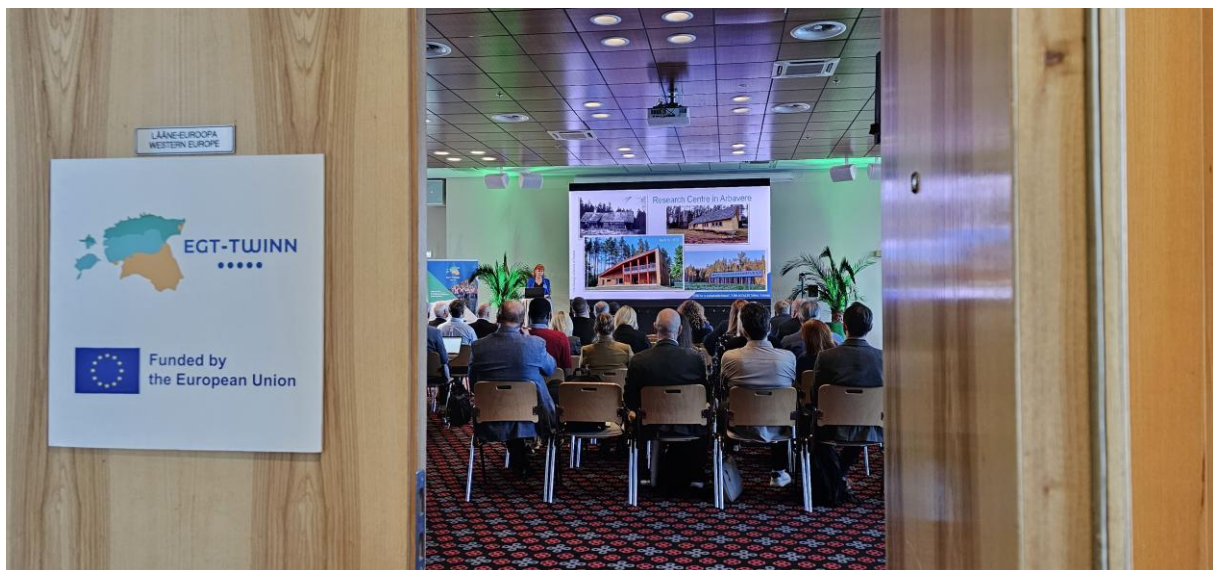
- Strengthened EGT's capacity to convene international and interdisciplinary dialogues.
- Exposed Estonian ministries, universities, and industry stakeholders to cutting-edge science, policy frameworks, and engagement practices.
- Highlighted Estonia's role in both geological potential (CRMs) and governance debates (SLO/SLE).
- Fostered new partnerships with Nordic and European institutions, creating momentum for future collaboration.

By combining technical innovation with social responsibility, Task 3.1 advanced the overall goals of EGT-TWINN to prepare Estonia for active participation in the European green transition.

Acknowledgements

The successful organisation of these events was made possible through the joint efforts of EGT staff and international partners. Special thanks go to **Florian Smit (GEUS)** for managing technical arrangements, **Toni Eerola (GTK)** for leading the workshop and contributing as keynote speaker at SLO workshop and conference, **Juha Kaija (GTK)** for co-organisation, **Kairi Põldsaar (EGT)** for coordination and communication, and **Heikki Bauert (EGT)** for technical support. We also thank all keynote speakers and contributors for enriching the conferences with their expertise.

Finally, we gratefully acknowledge the support of the **European Commission and the Horizon Europe programme**, whose funding under the EGT-TWINN project made these activities possible.



Annex 1. CRM conference program



Hestia Hotel Europa: 7–8 October 2024

Day 1: Monday 7. October				
Time		Title	Speaker	Organization
10.00 - 10.30		Registration and coffee		
OPENING SESSION				
Chairs: Kathryn Goodenough (British Geological Survey) / Juha Kaija (Geological Survey of Finland)				
10.30 - 10.45	15 min	Welcome to Estonia and CRMs	Sirli Sipp Kulli	Geological Survey of Estonia
10.45 - 11.15	30 min	KEYNOTE: CRM importance in EU, New CRM Act	Madalina Ivanica	European Commission
SESSION 1: CRM in Scandinavia and implications for the Baltic States (Part 1)				
Chairs: Kathryn Goodenough (British Geological Survey) / Juha Kaija (Geological Survey of Finland)				
11.20 - 12.00	40 min	KEYNOTE:The Nordic part of Fennoscandia – a potential treasure trove for European critical raw material needs	Erik Jonsson	Geological Survey of Sweden
12.00 - 12.20	20 min	Re-investigation of historical drill cores – indications for CRMs in Estonian crystalline basement	Siim Nirgi	Geological Survey of Estonia
12.20 - 13.20 LUNCH BREAK				
SESSION 1: CRM in Scandinavia and implications for the Baltic States (Part 2)				
Chairs: Tapio Halkoaho (Geological Survey of Finland) / Jakob Keiding (Geological Survey of Denmark and Greenland)				
13.20 - 13.40	20 min	GTK's scientific projects supporting CRM exploration in Finland	Tero Niiranen	Geological Survey of Finland
13.40 - 14.00	20 min	Review of the critical raw material resource potential in Greenland	Jakob Keiding	Geological Survey of Denmark and Greenland
14.00 - 14.20	20 min	Lithium pegmatites: from Africa to Europe	Kathryn Goodenough	British Geological Survey
14.20 - 14.40	20 min	The GREENPEG project toolset to explore for buried pegmatites hosting lithium, high purity quartz, and other critical raw materials	Axel Muller	University of Oslo
14.40 - 15.00	20 min	Fertility indicators for carbonate-hosted rare earth element deposits	Holly Elliot	British Geological Survey
15:00 – 16:00 POSTER SESSION and COFFEE BREAK				
SESSION 2: CRM in sedimentary basins				
Chairs: Lauri Joosu (Geological Survey of Estonian) / Kathryn (British Geological Survey)				
16.00 - 16.40	40 min	KEYNOTE: Sedimentary phosphorites	Lauri Joosu	Geological Survey of Estonia
16.40 - 17.00	20 min	Metal-Rich Iron-Manganese Oxyhydroxide Concretions	Martin Liira	Geological Survey of Estonia
17.00 - 17.20	20 min	Comparative Study of Phosphorite Deposits in the Tethyan Phosphogenic Province: Active Exploitation in Türkiye and Abandonment in Albania	Ana Fociro	Polytechnic University of Tirana
17.20 - 17.40	20 min	Perspectives of phosphorites deposits as REE resources	Sophie Graul	Tallinn University of Technology
17.40 - 17.45	5 min	Announcements about dinner & next day		Kairi Põldsaar
18.00 - 21.00 CONFERENCE DINNER @HESTIA HOTEL EUROPA				



Funded by
the European Union

The EGT-TWINN project has received funding from the European Union's Horizon Europe research and innovation program under Grant Agreement 101079459



Funded by
the European Union

This project has received funding from the European Union's Horizon Europe research and innovation program under Grant Agreement 101079459



Poster Session – Monday 7th October 2024 15:00 – 16:00

POSTER SESSION - Presenters and Titles				
No.	Related Session	Poster title	Presenter	Organization
1	S2	Geochemical Processes in Estonian Graptolite Argillite: Insights into Vanadium Concentration Mechanisms	Mawo Ndiaye	Tallinn University of Technology
2	S2	Phosphorite REE Resources in Estonia	Sophie Graul	Tallinn University of Technology
3	S2	REE enrichment in shelly phosphorites	Sophie Graul	Tallinn University of Technology
4	S2	Geochemistry, provenance, and tectonic setting of Paleoproterozoic metavolcanic and metasedimentary units of the alutaguse zone, Estonia, a comparative study with the south Svecofennian zones	Juan David Solano Acosta	Tallinn University of Technology
5	S3	Copernicus data to boost raw materials source management: Illustrations from the RawMatCop Alliance Project	Sara Kasmae	University of Bologna
6	S3	Let the exploration begin: helicopter-borne remote sensing a new addition to geological mapping studies	Sara Salehi	Geological Survey of Denmark and Greenland
7	S3	Harnessing Advanced Technologies for Sustainable Mineral Exploration: The AGEMERA Project	Tony Hand	Tallinn University of Technology
8	S3	Regional-scale exploration targeting of northern Finland for ultramafic-mafic intrusion hosted critical metals and its global implication	Malcolm Aranha	University of Oulu
9	S4	Analyzing the supply chains of critical raw materials in lithium-ion batteries: A focus on cobalt and lithium	Juan Tan	Geological Survey of Denmark and Greenland
10	S4	Recovery of Critical Elements from Estonian Phosphate Rock Using Hydrochloric Acid	Ruhany Sheherazad Azeez	Tallinn University of Technology
11	S4	Effect of calcination on the leachability of metallic elements from Estonian graptolite-argillite in sulfuric acid	Eliise-Koidula Kivimäe	Tallinn University of Technology
12	S4	Developing non-toxic collector chemicals for the flotation of Cu and P minerals – Towards the sustainable beneficiation of critical raw materials	Samuel Hartikainen	University of Oulu
13	S4	Developing continuously compressing crushing of critical minerals – Towards the sustainable comminution of critical raw materials	Niina Paasovaara	South-Eastern Finland University of Applied Sciences
14	S5	EGT-TWINN: Enhancing Research Capacity at the Geological Survey of Estonia to Accelerate the Country's Transition to Green Energy	Kairi Põldsaar	University of Tartu



Funded by
the European Union

The EGT-TWINN project has received funding from the European Union's Horizon Europe research and innovation program under Grant Agreement 101079459



Funded by
the European Union

This project has received funding from the European Union's Horizon Europe research and innovation program under Grant Agreement 101079459



Hestia Hotel Europa: 7–8 October 2024

Day 2: Tuesday 7. October				
Time		Title	Speaker	Organization
8.30 - 9.00		Gathering and Coffee		
SESSION 3: New Exploration Techniques for CRM				
Chairs: Jakob Keiding (Geological Survey of Denmark and Greenland) / Pertti Sarala (University of Oulu)				
09.00 - 9.40	40 min	KEYNOTE: Utilizing Machine Learning for Mineral Prospectivity Mapping and Target Generation of Critical Raw Materials	Vesä Nykänen	Geological Survey of Finland
9.40 - 10.00	20 min	Environmentally friendly surficial geochemical exploration techniques	Pertti Sarala	University of Oulu
10.00 - 10.20	20 min	MINEYE - Earth observation techniques for mine life cycle monitoring	Saman Tavakoli	Norwegian Geotechnical Institute
10.20 - 10.40	20 min	An innovative method to image inner structure of orthomagmatic ore deposits using regional seismicity: a case study of Akanvaara Cr-V-PGE deposit in Northern Finland	Nikita Afonin	University of Oulu
10.40 - 11.00 COFFEE BREAK				
SESSION 4: CRM Processing and Valorization				
Chairs: Saija Luukkanen (University of Oulu) / Jakob Keiding (Geological Survey of Denmark and Greenland)				
11.00 - 11.40	40 min	KEYNOTE: Value chain perspective in CRM extraction	Saija Luukkanen	University of Oulu
11.40 - 12.00	20 min	Developing a value chain for high strength magnets based on rare earth minerals from Europe	Arne Ratvik	SINTEF
12.00 - 12.20	20 min	Pioneering Sustainable CRM Recovery in European Mining	Fotios Konstantinidis	National Technical University of Athens
12.20 - 12.40	20 min	Sustainable mining practices: Innovative technologies on tailings management	Priyadharshini Priimal	University of Oulu
12.40 - 13.00	20 min	Circular solutions for mine tailings	Päivi Kinnunen	Technical Research Centre of Finland
13.00- 14.00 LUNCH BREAK				
SESSION 5: Environmental, Social, and Governance aspects of CRM				
Chairs: Juha Kaija (Geological Survey of Finland) / Tapio Halkoaho (Geological Survey of Finland)				
14.00 - 14.40	40 min	KEYNOTE: The evolution and impacts of the Finnish mining-sceptical movement from the uranium debate to the green energy transition: an environmental protest wave?	Toni Eerola	Geological Survey of Finland
14.40 - 15.00	20 min	Assessing Water-Use Impacts of Critical Raw Materials Production with Life Cycle Assessment Techniques	Rowan Halkes	British Geological Survey
15.00 - 15.20	20 min	Sustainable management of abandoned mines: The REMINDNET initiative funded by COST	Ledi Moisiu	EIT Raw Materials Regional Innovation Center of Albania
15.20 - 16.00	20 min	Assessing ESG challenges for cobalt supply from new mining projects in Europe	Stefan Horn	British Geological Survey
16.00 - 16.20	20 min	China's REE Monopoly Renders Global Exploration Efforts Futile. Lessons learned?	Per Kalvig	Geological Survey of Denmark and Greenland
16.20 - 16.30 CLOSING REMARKS + INSTRUCTION FOR EXCURSION (KATHRYN/HEIKKI)				



Funded by
the European Union

The EGT-TWINN project has received funding from the European Union's Horizon Europe research and innovation program under Grant Agreement 101079459



Funded by
the European Union

This project has received funding from the European Union's Horizon Europe research and innovation program under Grant Agreement 101079459



Visit to the Geological Survey of Estonia Arbavere Research Centre

Only for participants who have signed up during the registration

October 9th, 2024

TIME	AGENDA Wednesday 9 th of October 2024	
09.00	Bus leaving from the Hestia Europe hotel to EGT Arbavere Research Centre	
10.15 – 10.45	Arrival and welcome coffee	
10.45 – 11.15	Overview of the Arbavere Research Centre	Jaak Jürgenson
11.15 – 12.00	Introduction to drill cores in two groups: - CRMs in Estonian phosphorite - CRM indications in Estonian crystalline basement rocks	Lauri Joosu Siim Nirgi
12.00 – 13.00	Buffee lunch	
13.00 – 13.45	Introduction to drill cores in two groups: - CRM indications in Estonian crystalline basement rocks - CRMs in Estonian phosphorite	Siim Nirgi Lauri Joosu
13.45 – 15.00	Return to Tallinn	

Brief overview of the EGT Arbavere Research Centre: [EGT Arbavere Research Centre](#)



Photo: L. Maala



Funded by
the European Union

The EGT-TWINN project has received funding from the European Union's Horizon Europe research and innovation program under Grant Agreement 101079459



Funded by
the European Union

This project has received funding from the European Union's Horizon Europe research and innovation program under Grant Agreement 101079459

Annex 2. SLO workshop and conference programs



EGT Twinn SLO Conference Workshop Program 15 September 2025



Monday, 15 September 2025		
Time	Title	
09:30	10:30	Registration and coffee
SESSION 1: Introduction and Basic Concepts		
Toni Eerola (Geological Survey of Finland)		
10:30	12:00	Mineral exploration, its stages, activities and role within the mining life cycle
		Central concepts and background of the SLO/SLE and corporate social responsibility (CSR) and environmental, and social governance (ESG)
		Environmental, social, and business risks and conflicts in mineral exploration
		Company profiling: training, websites, folders, social media and other tools in stakeholder engagement and communication;
		Area profiling: taking the existing communities, livelihoods, land use and stakeholders (pre-conditions of the SLE) in account beforehand and during the projects
12:00	13:00	Lunch break
SESSION 2: Communication and stakeholder engagement		
Toni Eerola (Geological Survey of Finland)		
13:00	15:00	Communication and stakeholder engagement (procedural fairness) within the legislation and permit process framework
		Info Days - public event for the local community in their locality
		Benefit sharing in mineral exploration (distributive fairness) and its challenges for junior companies
		The role of the state in SLO/SLE
		The importance of project location and associated land use: sensitive contexts prone to disputes
15:00	15:30	Coffee break
SESSION 3: Stakeholder engagement and land use issues		
Toni Eerola (Geological Survey of Finland)		
15:30	17:00	Board games on mineral exploration and SLE
		Build up a skeleton for stakeholder engagement toolkit tailored for your own needs and context
		Prepare a plan for sustainable mineral exploration for a case study area
		Roleplay in SLE
		Discussion
17:00		Wrap-up and farewell



EESTI
GEOLOOGIAATEENISTUS



Funded by
the European Union



Funded by
the European Union

This project has received funding from the European Union's Horizon Europe research and innovation program under Grant Agreement 101079459



Social License to Operate - Responsible Mineral Exploration Conference

September 16, 2025 Hestia Hotel Europa, Tallinn, Estonia

Tuesday, September 16, 2025				
Time		Title	Speaker	Organization
9:30	10:00	Registration and coffee		
OPENING SESSION				
Chair: Erki Peegel (Geological Survey of Estonia)				
10:00	10:15	Opening of the conference	Yoko Alender	Parliament of Estonia
10:15	10:30	Welcome to Estonia	Sirli Sipp Kulli	Geological Survey of Estonia
10:30	10:45	KEYNOTE: SLO-SLE & ESG setting the scene	Toni Eerola	Geological Survey of Finland
SESSION 1: Experiences in Europe, Estonia and the Nordics				
Chair: Juha Kaija (Geological Survey of Finland)				
10:45	11:00	KEYNOTE: Public Attitudes Toward Phosphorite Exploration and Mining in Estonia	Erki Peegel	Geological Survey of Estonia
11:00	11:15	Social licence to operate and international standards	Gregory Poelzer	Luleå University of Technology, Sweden
11:15	11:30	Does societal acceptance really matter?	Pamela Lesser	University of Lapland, Finland
11:30	11:45	From Past Experiences to Future Skills: Towards a Just and Sustainable Labour Market	Bogdana Androsjuk	University of Tartu, Estonia
11:45	12:00	Discussion		
12:00	13:00	Lunch break		
SESSION 2: Experiences in Finland				
Chair: Toni Eerola (Geological Survey of Finland)				
13:00	13:15	KEYNOTE: Factors leading to mining resistance	Leena Suopajärvi	University of Lapland, Finland
13:15	13:30	Searching for sustainability: Finnish environmental NGOs and mining plans	Tapani Veistola	The Finnish Association for Nature Conservation, Finland
13:30	13:45	How the urgency can influence the acceptance of critical raw minerals mining and battery industry projects: Approaches from governance studies	Rauno Sairinen	University of Eastern Finland
13:45	14:00	Community benefit agreements in Nordic mining context	Juha M. Kotilainen	University of Eastern Finland
14:00	14:15	Social acceptance of Strategic and Critical minerals production in Europe	Jussi Lähde	Latitude 66 Cobalt, Finland
14:15	14:30	Discussion		
14:30	15:00	Coffee break		
SESSION 3: Poster session				
Chairs: Juha Kaija & Toni Eerola (Geological Survey of Finland)				
15:00	16:00	Poster pitch (1 min) and poster session		
SESSION 4: Case studies illustrating best practices				
Chair: Erki Peegel (Geological Survey of Estonia)				
16:00	16:15	KEYNOTE: Keeping the locals informed - Practices, experiences and blunders from Geological Survey of Finland's bedrock projects	Perttu Mikkola	Geological Survey of Finland
16:15	16:30	Community development agreements – a blueprint to reconcile minerals extraction and nature protection in Europe	Nike Luodes	Geological Survey of Finland
16:30	16:45	Social perceptions of mineral exploration: insights from the UNDERCOVER project	Sam Whittlesey	LGI Sustainable Innovation, Finland
16:45	17:00	Discussion & closure		
17:00	17:15	Leg stretch		
Movie viewing "Europe's Lithium Paradox"				
Chair: Toni Eerola (Geological Survey of Finland)				
17:15	18:15	Movie viewing: "Europe's Lithium Paradox" by SIM ³ , KU Leuven Institute for Sustainable Metals and Minerals		
18:15	18:30	Discussion		

* The organizers reserve the right to make changes to the program. Current version: 1st of September 2025



The EGT-TWINN project has received funding from the European Union's Horizon Europe research and innovation program under Grant Agreement 101079459