



# **VÄÄRTUSTADES TAVALIST**

## **TEHISKIVI EESTI 20. SAJANDI ARHITEKTUURIS**

Maris Mändel, PhD





traditsiooniline arhitektuur vs moodne arhitektuur





teistsugused materjalid ja tarindid





masstootmine-massehitus



# EHITUSMATERJALIDE VÄÄRTUSHINDAMINE ÜLDISELT



Uus

Haruldane

Vana



- +

+ +

--

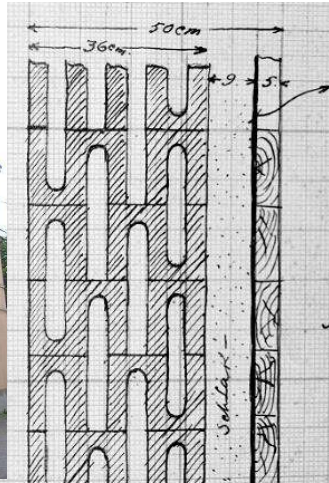
+ -



Tavaline



# 20. SAJANDI EHTUSMATERJALIDE VÄÄRTUSHINDAMINE



Haruldane



Juhuslik

- +

+ +

Taotluslik



- -

+ -



Tavaline





## BETOONMATERJALID



monoliitne raudbetoon



monteeritav raudbetoon



betoonkivid

## SILIKAATSED MATERJALID

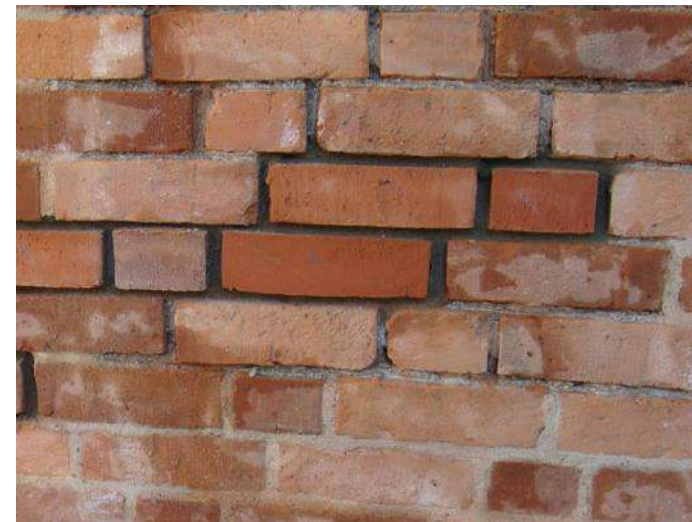


silikaltsiitsuurplokid



silikaattellis

## KERAAMILINE TELLIS



harilik tellis



kärg-, auk-  
ja pilutellised



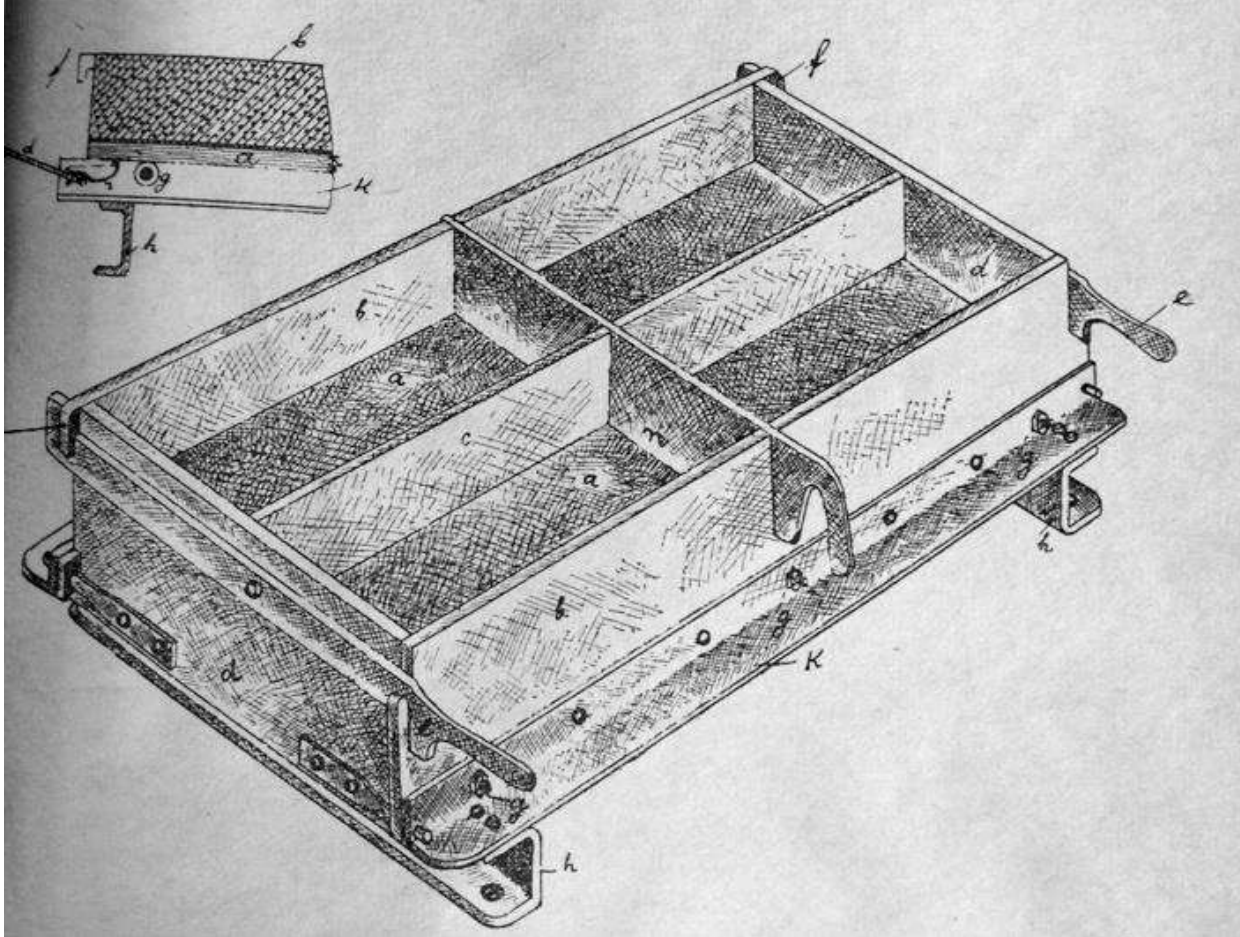
**BETOONKIVID**



# HARILIKUD TELLISEMÕÖTU MÜÜRIKIVID







Kasutusel 20. sajandi I poolel.

Toodeti nii tööstuslikult kui valmistati käsipressi abil konkreetse ehituse tarvis ise.

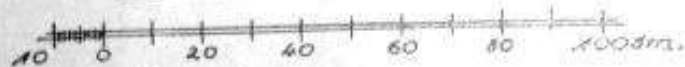


Kolmekihiline Nopsa sein.

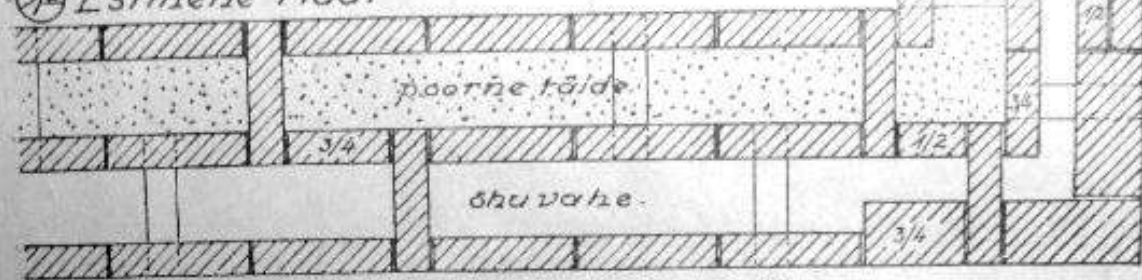
1/4 + 1/4 + 1/4 kivi.

Nurga tugevdamine eri

sidekivide abil.



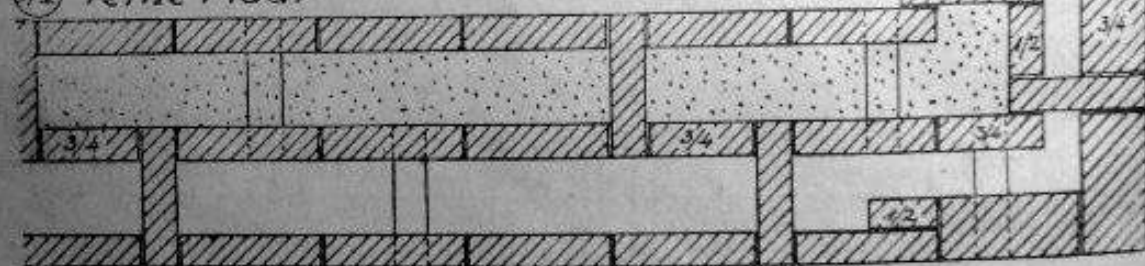
10 Estmene rida.



15 Seina eestvaade.



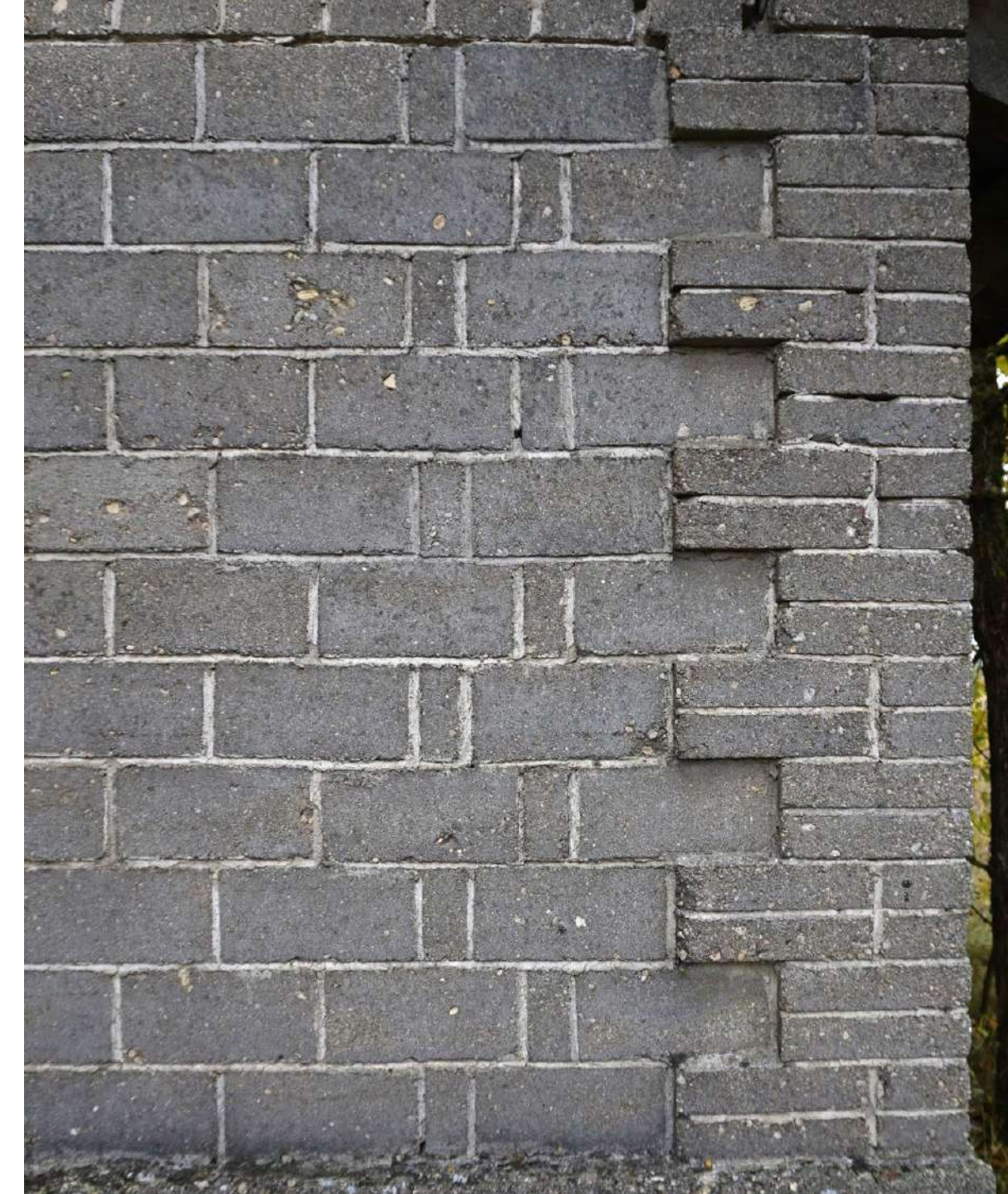
12 Teine rida.



# NOPSA SEIN







- iseloomulik müürikiri
- kasutusel al 1929 kuni 1960ndad
- nii krohvimata kui krohvitud seintes

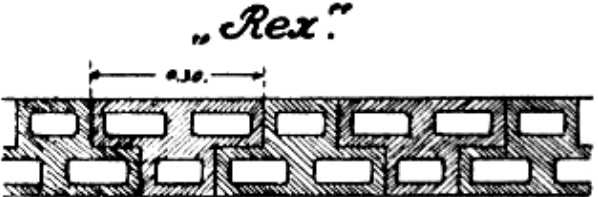
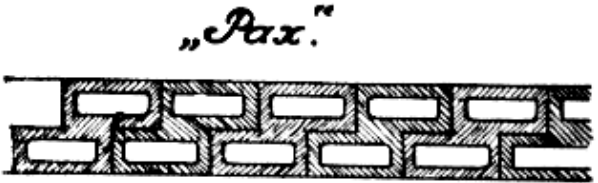
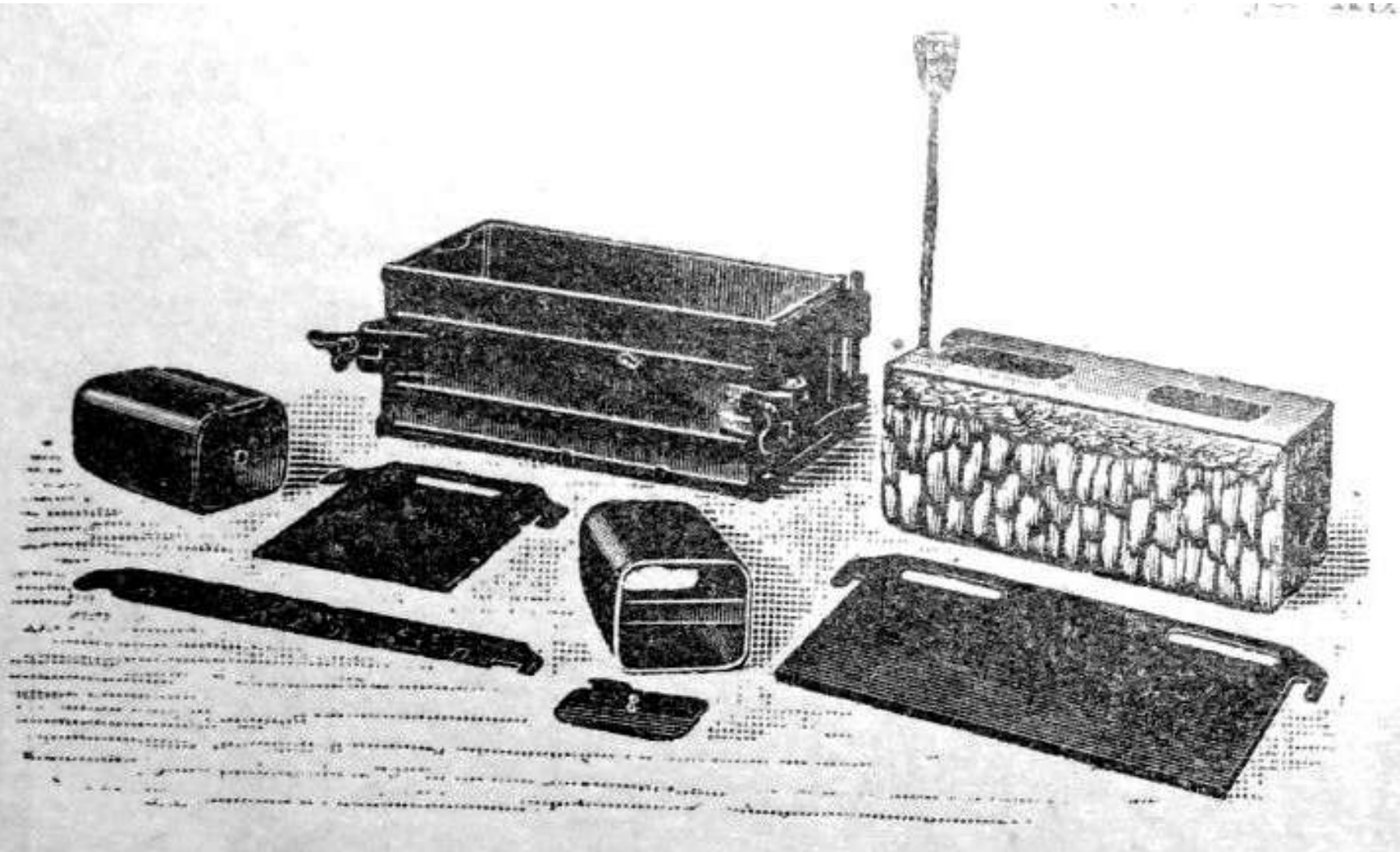








# BETOONIST ÕÕNESKIVID







Rägavere tee 10



**Z KIVI – EHITUSVIIS**



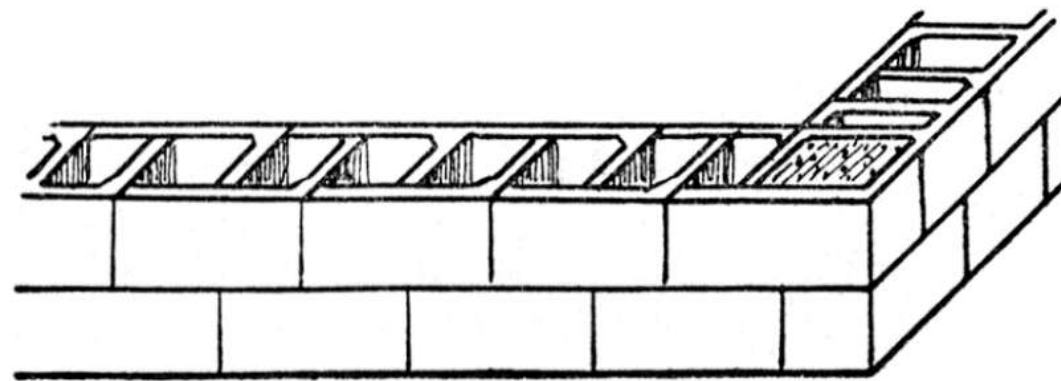
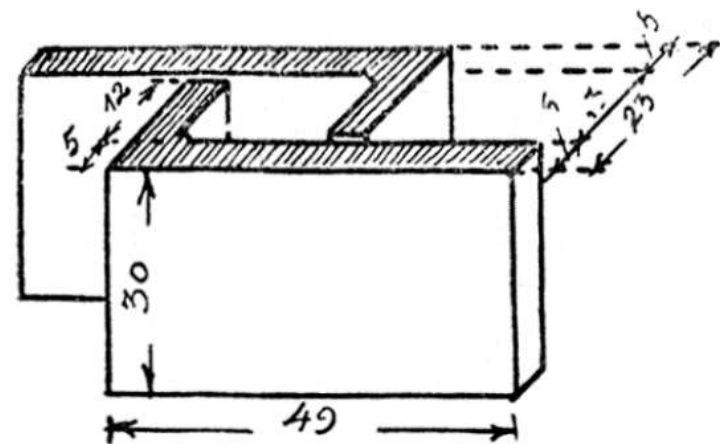
Betoon-ehitusviis küljadel maadel.

3 telliskivi paksune seinaga soojuskaitse. Märksa odavam kui telliskiviehitus.

Nõudke hinnakirju ja prospekte!

**H. LYRA – BETOONEHITUSED**

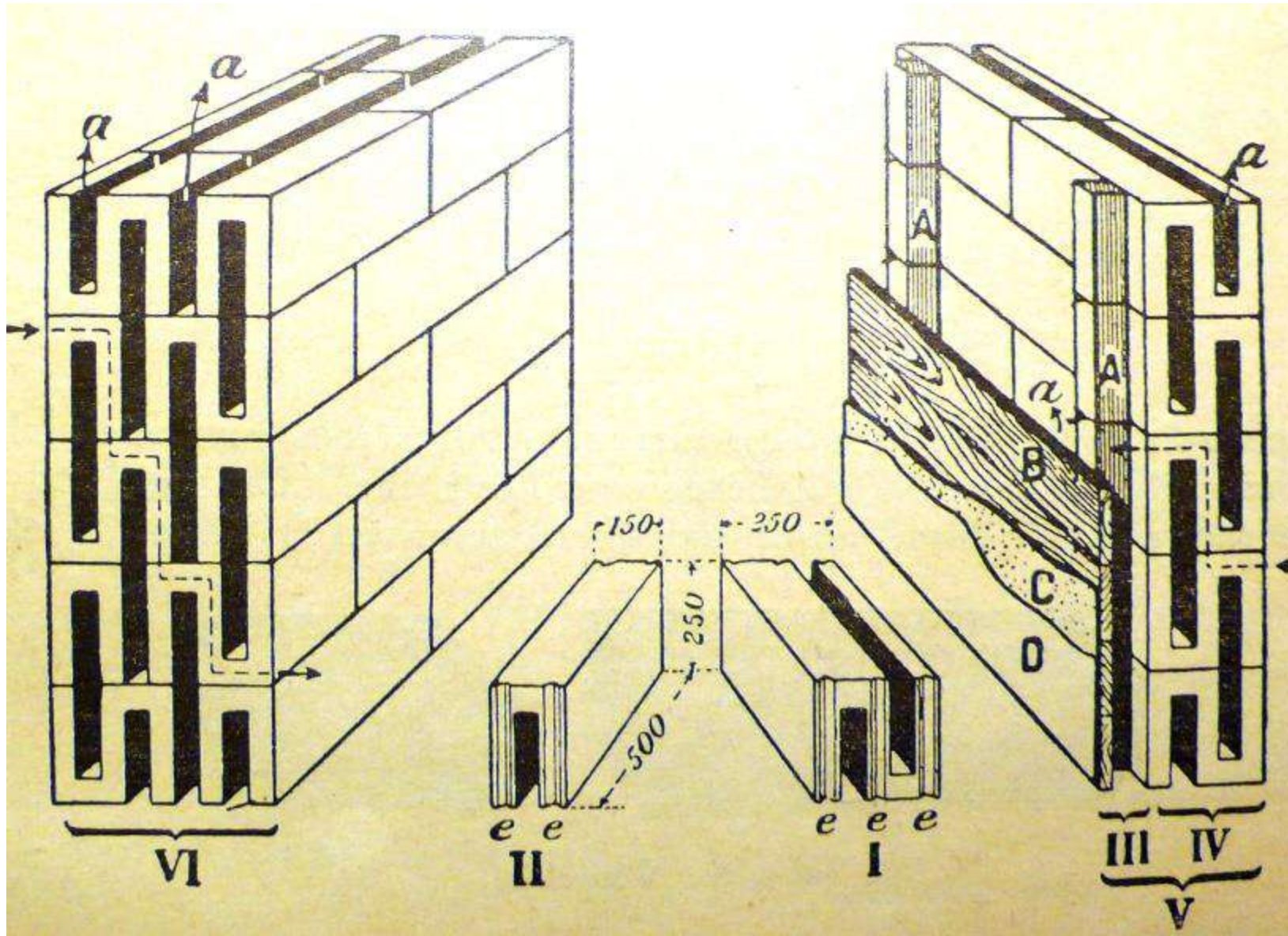
Tallinn, Viru tänn. nr. 9, kõntr. 12-01 ja 21-13.  
Tartu, Peterburi tänn. nr. 16, kõntr. 3-79.



Joon. 46. Ambi-kivid.



# Nn Vaheri kivid – S- ja U-kujulised tsementkivid, Tootja ins. V. Vaher



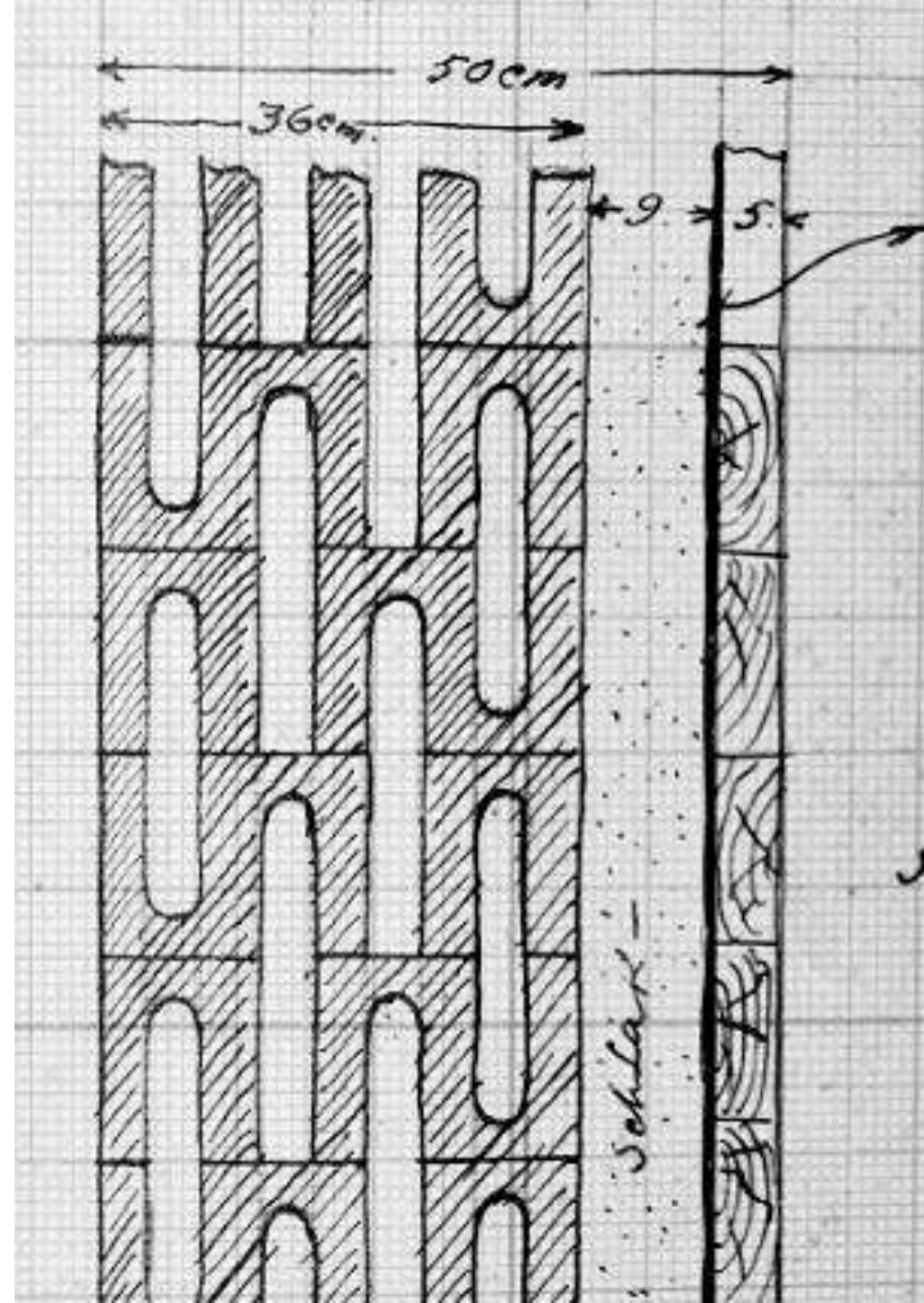








Adamsoni 4, Tallinn





# Lihvitud pinnaga tsementkivid - Arnold Toomanni vabrik Tapal





# Erinevad dekoratiivsed betoonist fassaadikivid







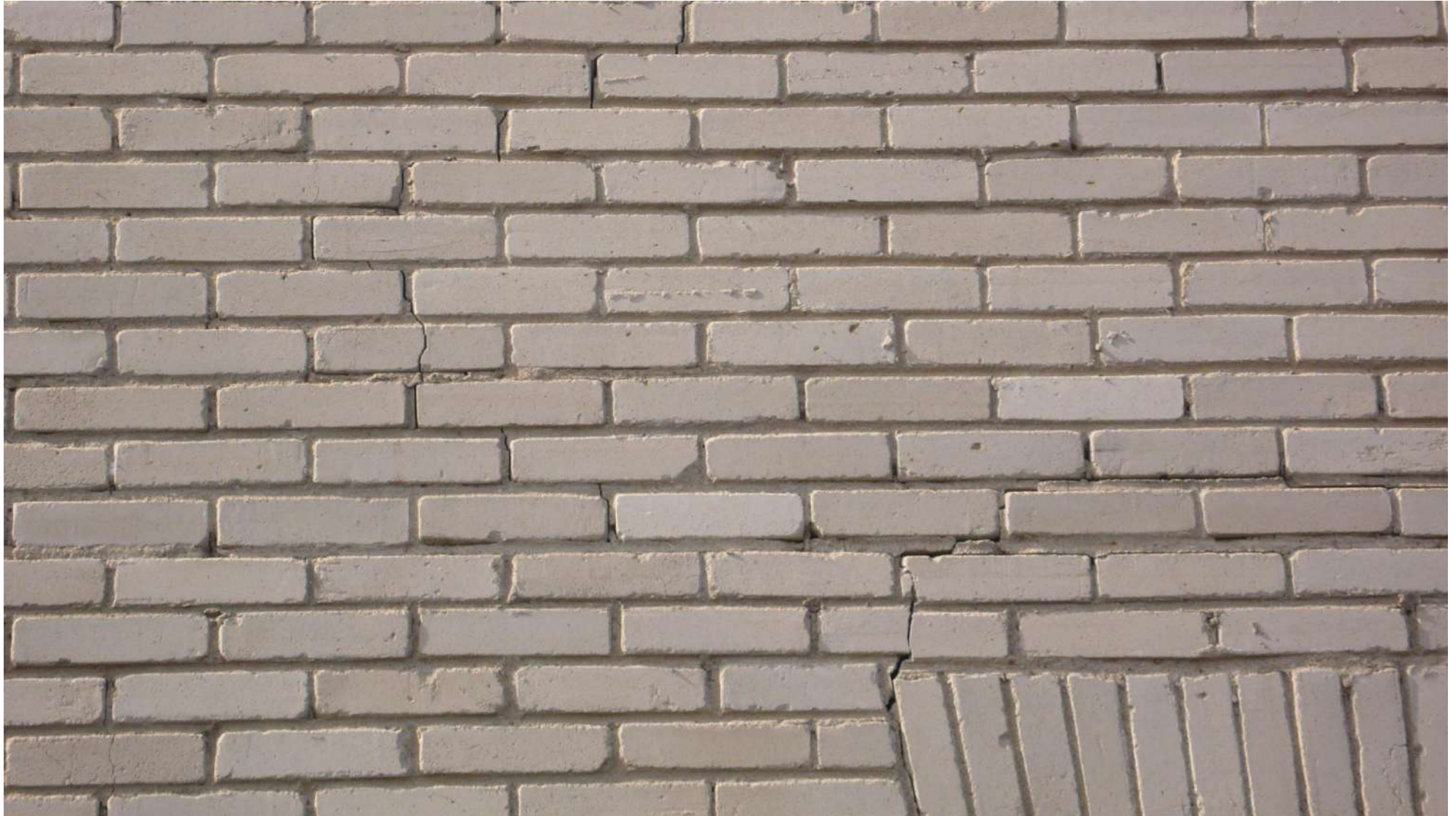




Betoonkivid kombinatsioonis  
teiste materjalidega



# SILIKAATTELLIS























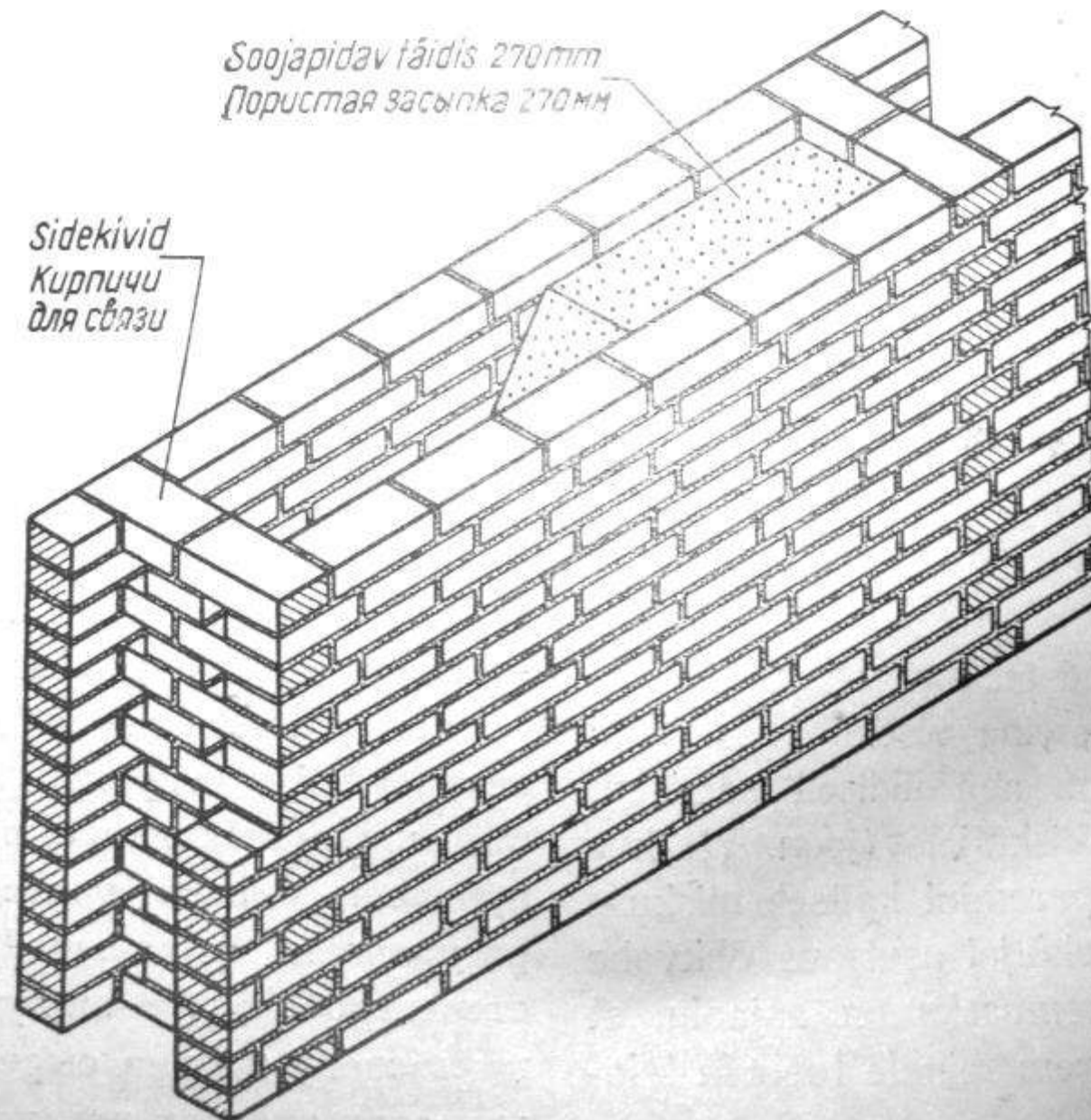


# Sõjajärgsed individuaalelamud



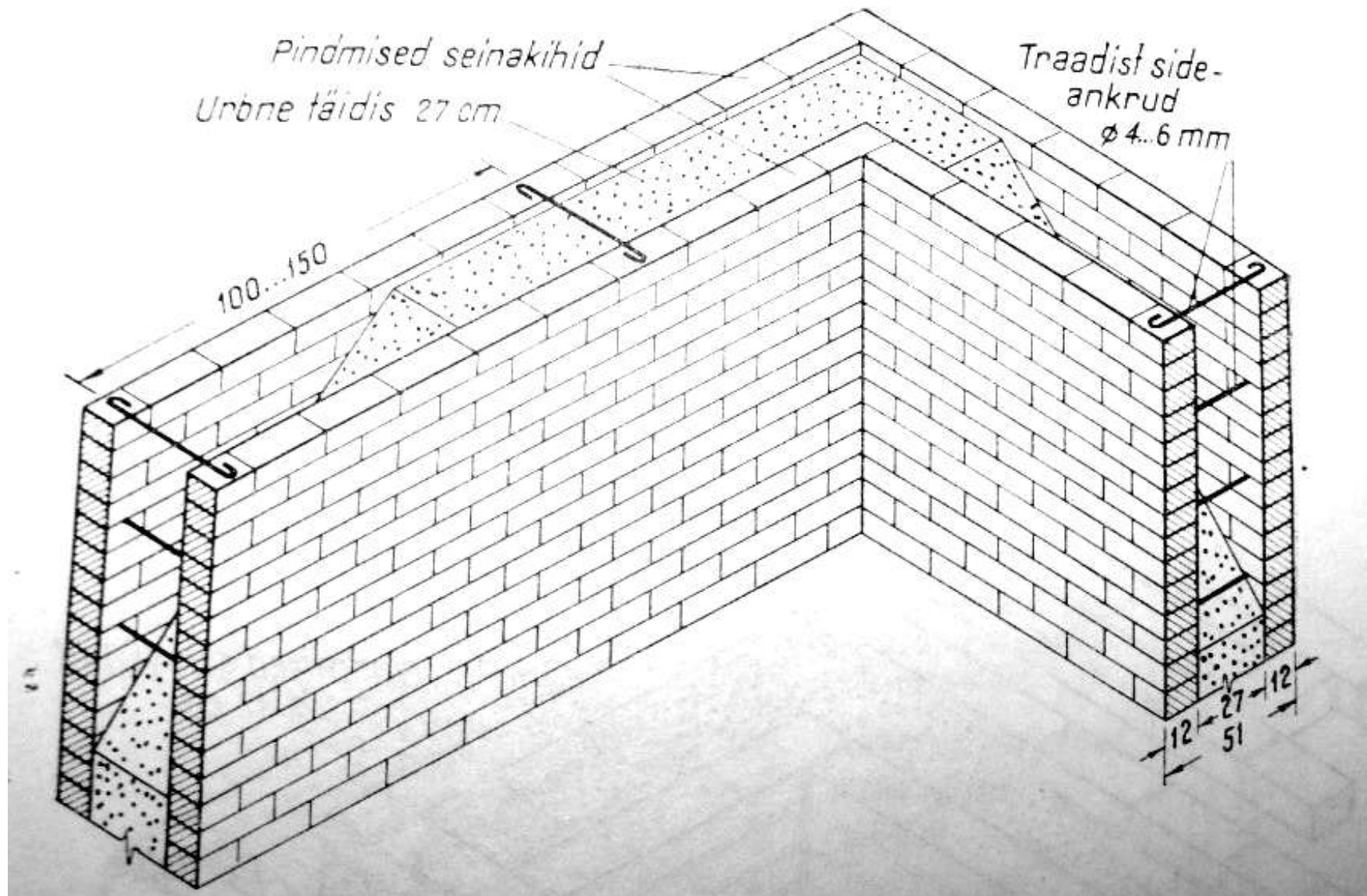


# GERARDI SEIN (tellistest püstsidemetega)

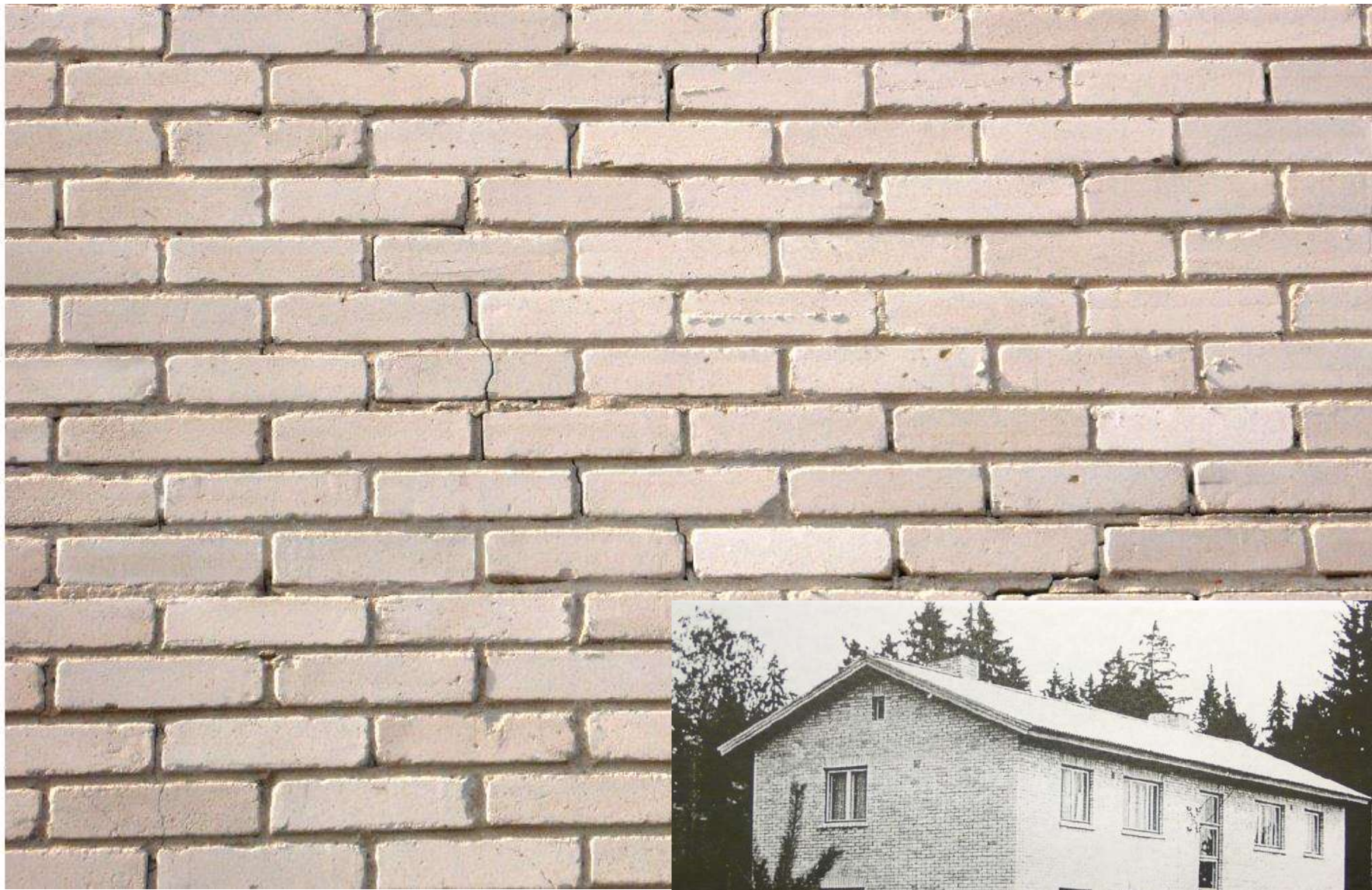




# GERARDI SEIN (traatsideankrutega)



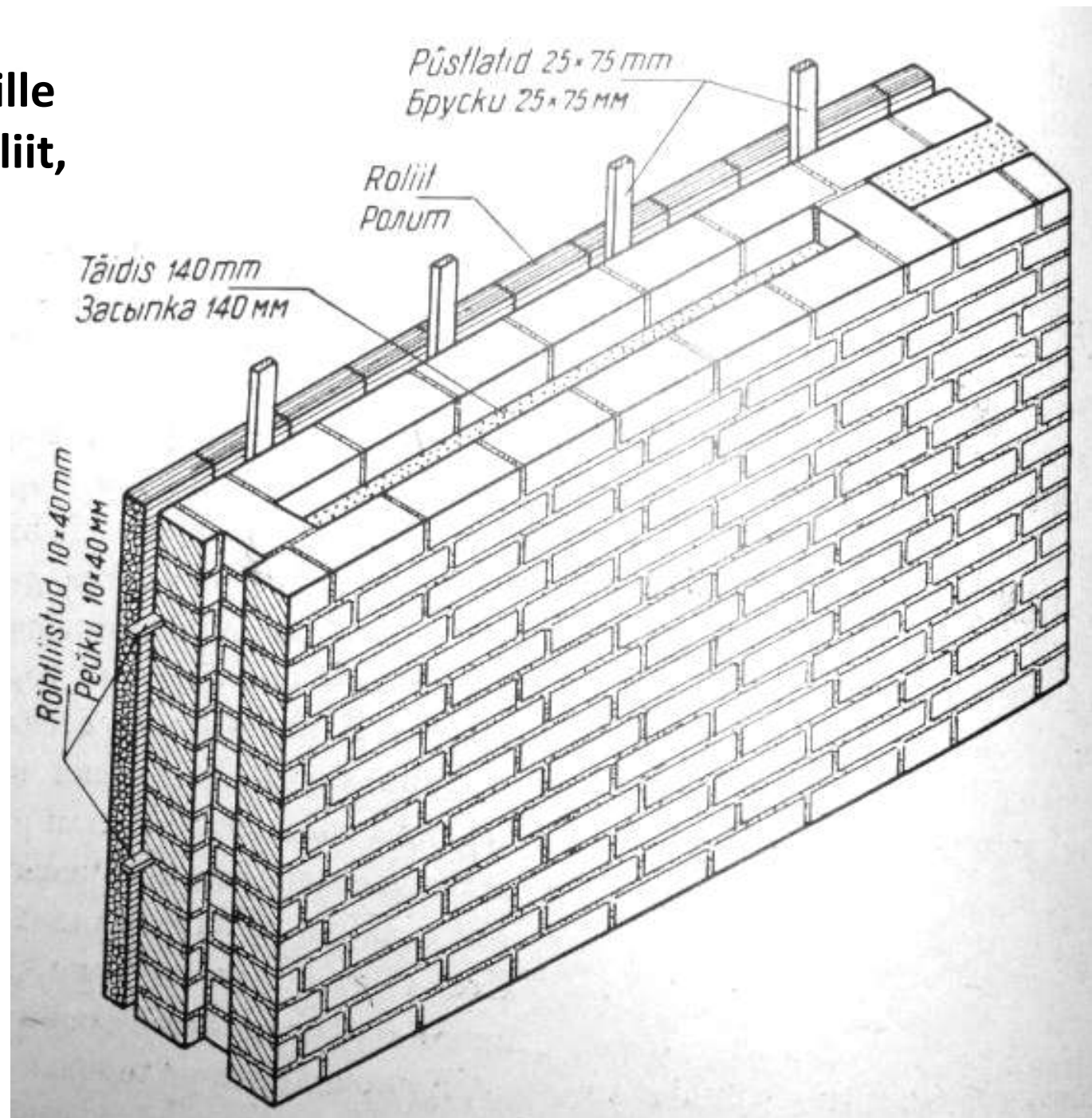




Maelamu tüüpprojekt

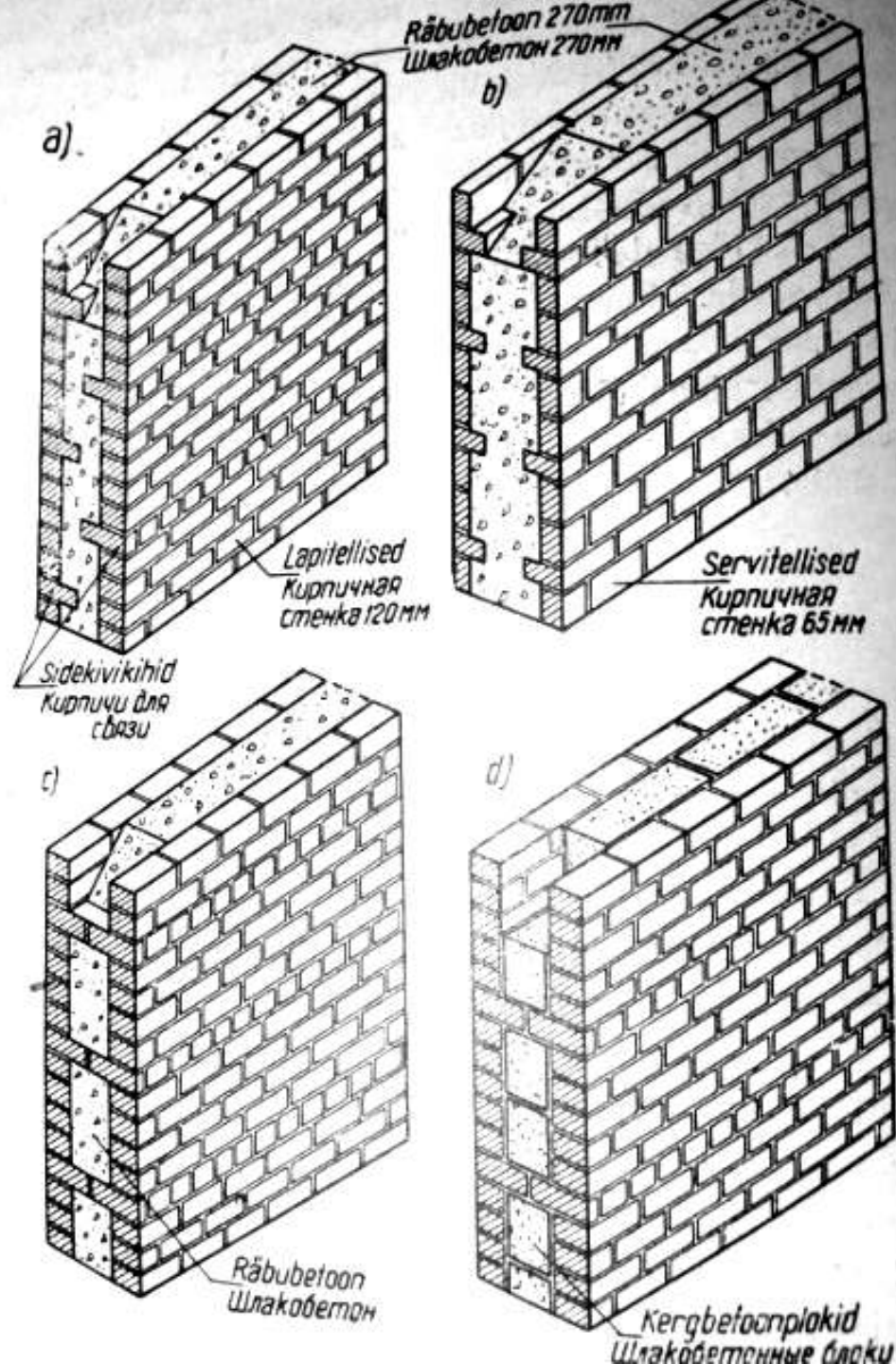
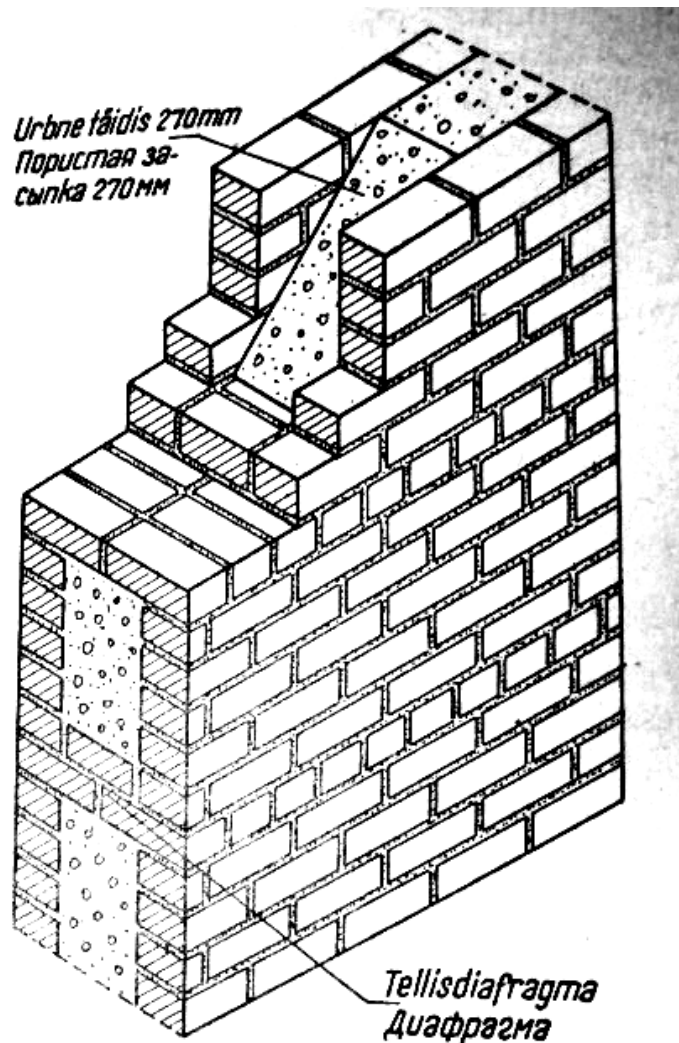


**RAADI SEIN**  
(Gerardi sein, mille  
välisküljel on roliit,  
krohvitud)



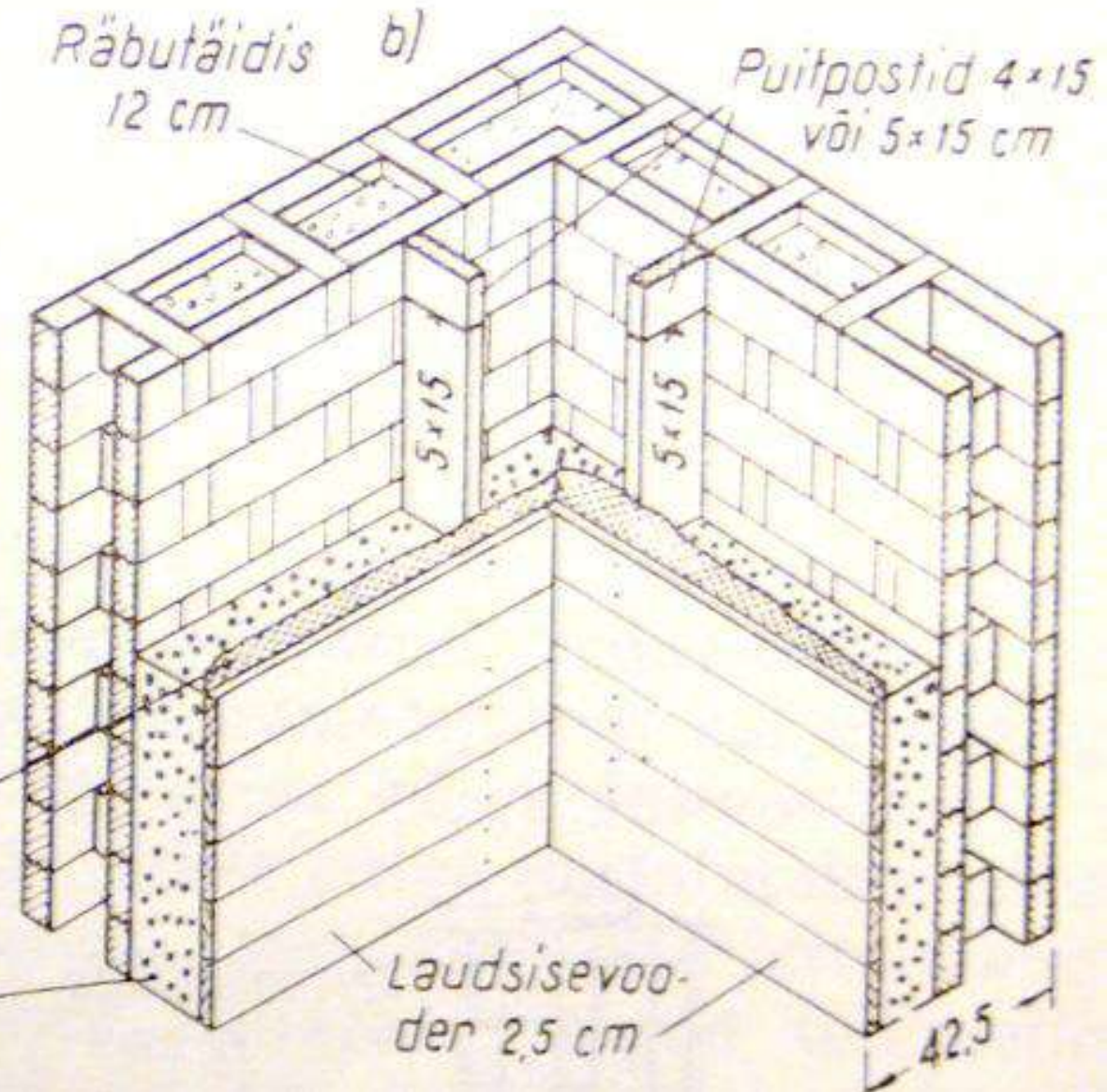
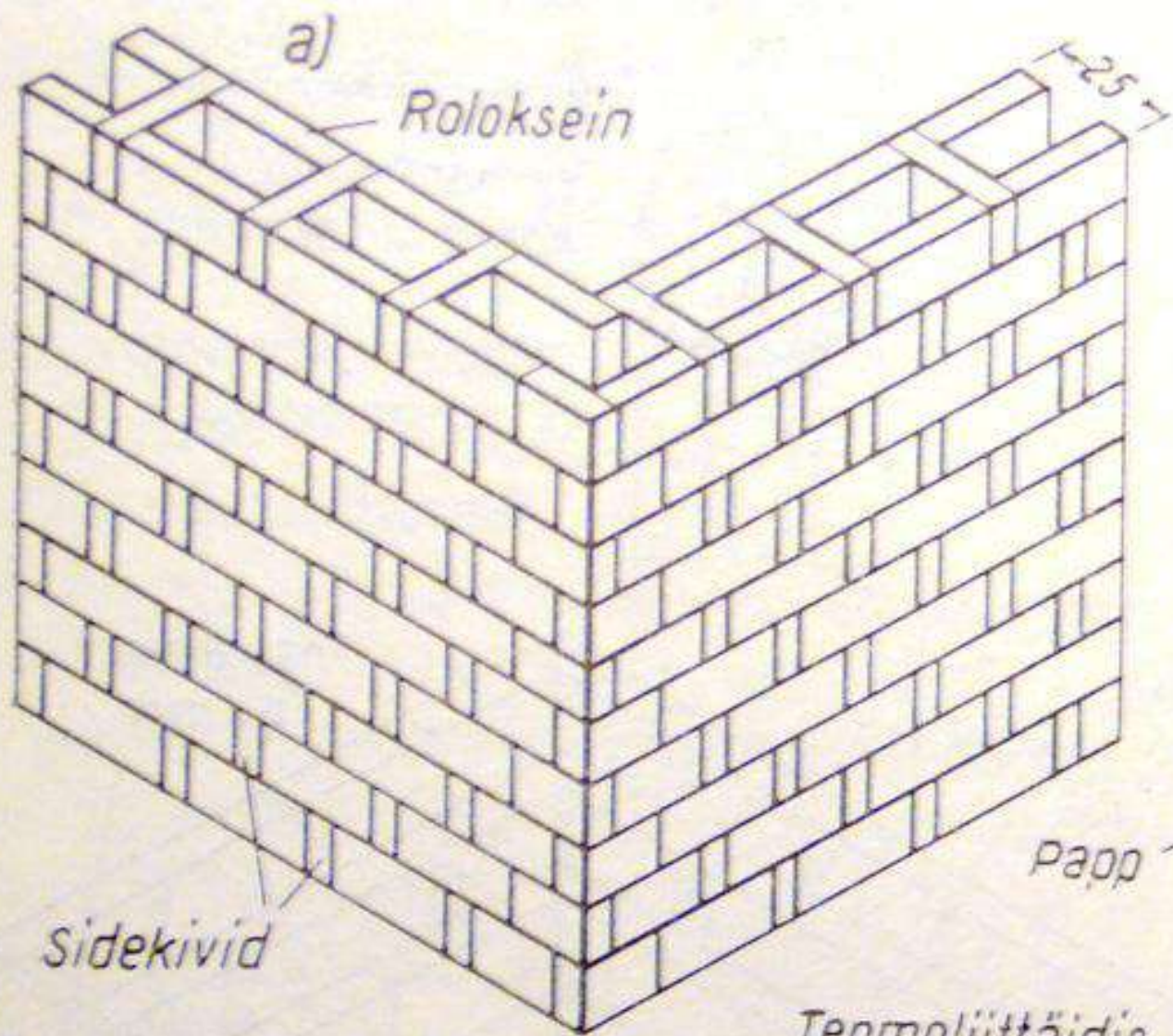


# POPOVI SEIN (rõhtsidemetega kahekihiline sein)





# ROLOKSEIN





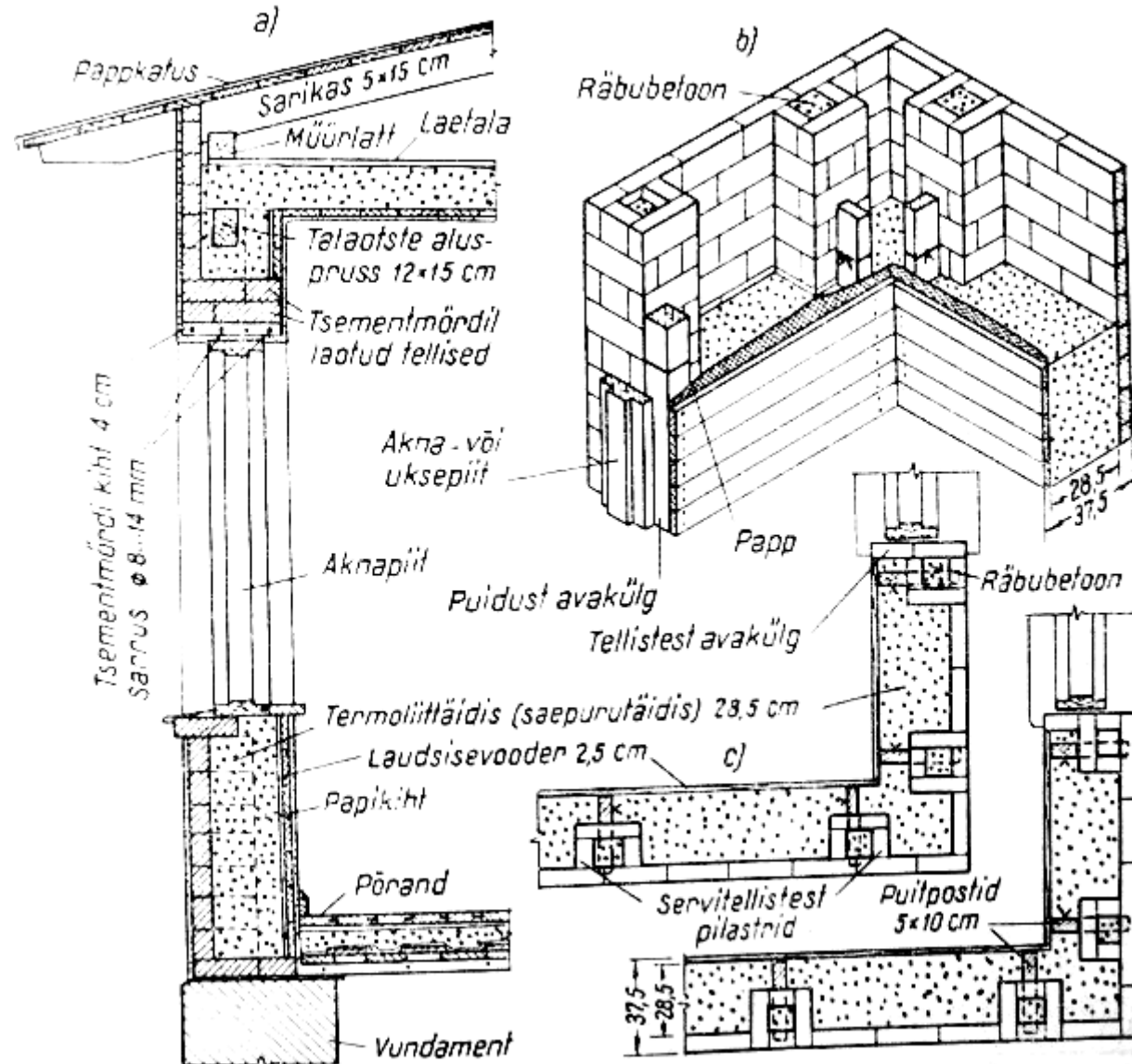


Rolokseinaga maja, Edu 24, Tallinn



# HARJU SEIN

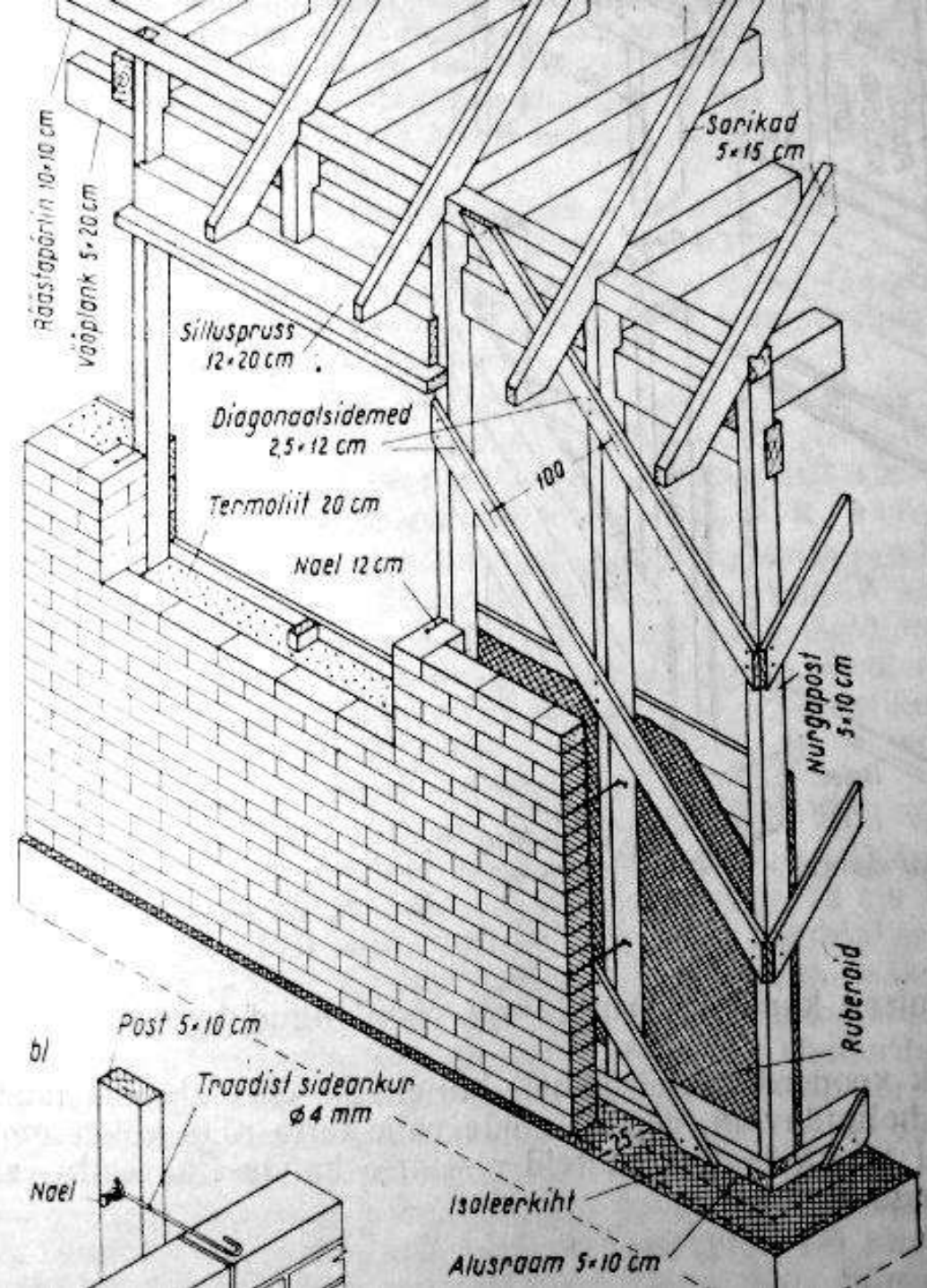
(võib olla laotud nii servi- kui lapitellistest)





# NÕMME SEIN

(puitsõrestiksein  
silikaattelistest voodriga)







MÜÜA  
ERAMU  
www.kaaberstimaja.ee

93









DEKORATIVSEED  
MÜÜRİKIRJAD

ДЕКОРАТИВНЫЕ  
РИСУНКИ  
КИРПИЧНОЙ КЛАДКИ







































**SILIKALTSIITSUURPANEELID**















