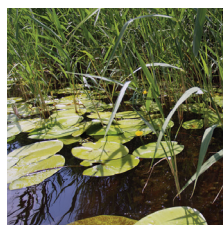
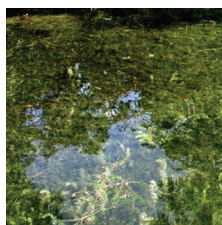
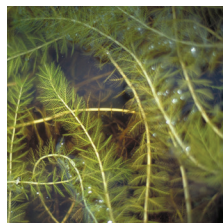
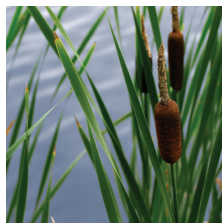


# Product Manual



## Weed Razer

Item 580110



## Table of Contents:

Product Contents . . . . .	2
Assembly Instructions . . . . .	3-4
Operating Instructions . . . . .	4
Blade Sharpening Instructions . . . . .	5-6

Safety Instructions . . . . .	7
Replacement Parts . . . . .	8
Product Warranty . . . . .	8

# Important Information:

Please read these instructions thoroughly before use. Failure to follow instructions may result in equipment damage or failure, losses, injury or death.

## ⚠ **WARNING:** ⚠

To reduce the risk of injury:

- The Weed Razer is designed for cutting submerged, partially emergent, or emergent aquatic vegetation from underwater. Any other use is strictly prohibited. Before using the Weed Razer, please read this manual carefully to understand the proper use of the unit.
- The Weed Razer blade(s) are razor sharp. The blade covers should be on while assembling the tool and when tool is not in use. Failing to comply can result in severe lacerations, dismemberment, and even death.

## ⚠ **SAFETY FIRST:** ⚠

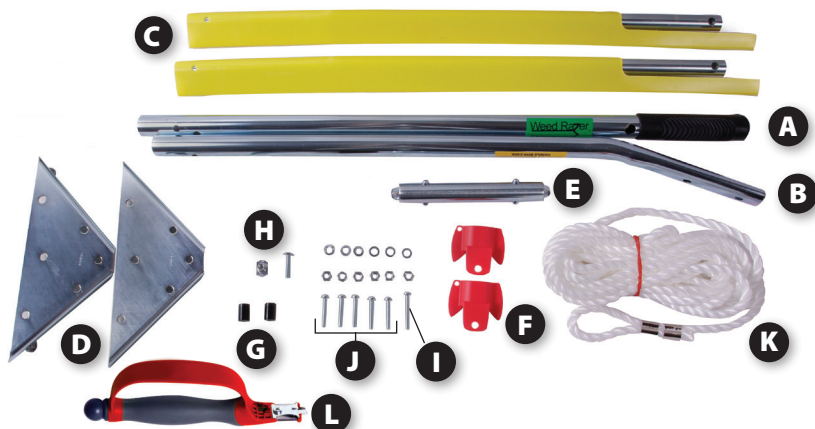
Instructions containing a warning within this manual are marked with a symbol.

Keep out of reach of children.

Do not use with children in immediate area.

IMPORTANT: Jenlis, Inc® is not responsible for equipment damage or failure, losses, injury or death resulting from failure to follow safety precautions, misuse or abuse of equipment.

## PRODUCT CONTENTS:



	PART	QTY
A	Handle	1
B	Angled Handle	1
C	Blades	2
D	Support Bracket	2
E	Handle Connector	1
F	Weed Deflector	2

	PART	QTY
G	Nylon Spacer	2
H	1.5" Bolt & T-Nut	1 ea.
I	1.5" Bolt, Nut, Washer	1 ea.
J	1.2" Bolt, Nut, Washer	5 ea.
K	Rope 25'	1
L	Blade Sharpener	1

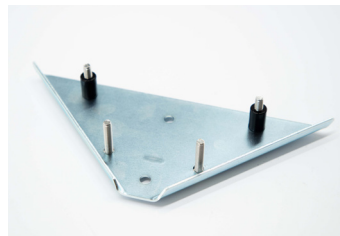
# Assembly & Instructions

## Tools Required:

- #3 Phillips Screwdriver
- 7/16" Wrench

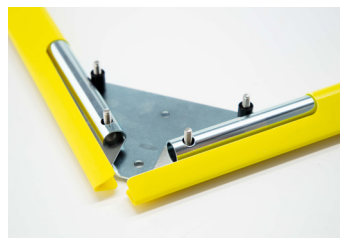
## Step 1

Insert 4 of the 1.2" Bolts (J) into the four outermost holes of one of the triangular Support Brackets (D) making sure to slide the bolts through the domed side, then place the bracket on a flat work surface with the screw heads down. Place a Nylon Spacer (G) on each of the bolts at the base of the triangular bracket.



## Step 2

Place each Blade (C) onto the Support Bracket (D) so that each blade edge faces outward and the holes seat over the two bolts at the narrow end of the triangular bracket. Next, seat the second triangular Support Bracket (D) over the assembly with the domed side facing up and place a washer and nut on each of the four bolts—be sure to simply hand tighten at this time.



## Step 3

Slide the blade covers back about 2" to make room for the handle. Take the two halves of the Weed Deflector (F) and snap together at the pins molded into each piece. Slip the Weed Deflector (F) onto the Angled Handle (B) at the end with two holes making sure that the hole in the Weed Deflector aligns with the second hole from the end, then slide the Angle Handle (B) into the Support Bracket (D) so that the holes align. At this time, the blade covers can be slid back into place for safety and will ride up over the Weed Deflector slightly.



## Assembly & Instructions (con't)



### Step 4

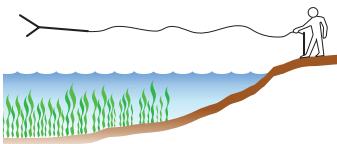
Next insert a 1.2" bolt (J) into the hole at the base of the Support Bracket and a 1.5" bolt (I) through the hole with the Weed Deflector (F), then secure each with a washer and nut. Tip the assembly upright and tighten all fasteners securely using a Phillips screwdriver and 7/16" wrench.



### Step 5

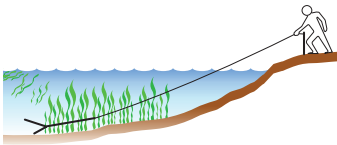
Handle Assembly—Press the spring-loaded buttons on one end of the Handle Connector (E), slide into the open end of the Handle (B) and turn until the buttons snap into the holes in the handle. Repeat this process for the second half of the handle.

## Operating Instructions



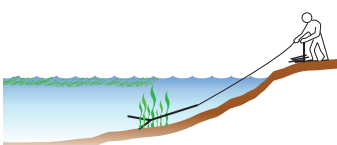
### Step 1

Throw the Weed Razer out and over area to be cleared. If you are on a dock, tie the rope to a post so you don't throw too far.



### Step 2

Let the Weed Razer sink



### Step 3

Pull back in using short, hard, jerking motions. Repeat as many times as needed to clear your weeds.

# Blade Sharpening Instructions



⚠ **WARNING** ⚠

## Step 1

Always wear cut resistant gloves when handling the Weed Razer.

## Step 2

Stand the assembled Weed Razer up and grip the handle in one hand, or rest the handle of the Weed Razer against a wall or building.



Fig. 1

## Step 3

Kneel or sit in front of the Weed Razer in a stable position (Figure 1). Do not sharpen while standing or leaning over the cutting edge.

## Step 4

Grip the handle of the Sharpener (L) so that the guard is between your hand and the blade surface.

**Step 5** To remove burs from the blade surface, use the inserts on either side of the tool (1).



## Step 6

To sharpen BOTH SIDES of the blade at once, use the carbide insert (3) with two pointed tips that form a V. Run the sharpener down the cutting edge in four to six strokes using less pressure as the edge gets sharper.



# Blade Sharpening Instructions (con't)



## Step 7

To sharpen ONE SIDE of the blade only, use the insert (2) with one pointed carbide tip and one rounded metal guide. Press the inside edge of the carbide insert against the edge of the blade you want to sharpen. Run the carbide over the entire edge four to six times with consistent pressure. Repeat this process for the other side of the blade.

**NOTE: We recommend using the process in STEP 6 for greater consistency in sharpening.**

## Step 8

In the end of the sharpener's handle (4), you will find a screw-in felt pad and oil for lubricating the blades. We encourage you to use the Weed Razer Sharpening Tool for all of your sharpening needs. When you are sharpening other tools that may rust or corrode, add a few drops of oil to the lubricating pad and apply to each blade after every sharpening.



# Safety Instructions

## ⚠ WARNING ⚠



Do not pull behind a boat

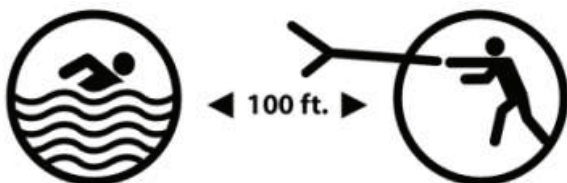


Do not pull behind a vehicle  
or any mechanical device



1. Always wear cut resistant gloves when handling the Weed Razer, especially during and after removal of the blade covers.
2. The Weed Razer is to be operated by hand only. Do not pull the Weed Razer behind a boat or any other machine driven equipment. Doing so will void the warranty and damage your Weed Razer.
3. Do not use with children in immediate area.
4. Do not use the Weed Razer when humans and/or animals are present within 100 feet from the launch point.
5. Do not place or use near electrical wires or cords.
6. Never touch the sharp edges of the blades with bare hands at any time.
7. Leave blade covers on the cutting edges when not in use.
8. Check all bolts, connections, and rope before use.
9. Avoid areas with underwater structures.
10. When not in use, store in a safe location out of the reach of children.

**NOTE:** Failing to comply can result in severe lacerations, dismemberment, and even death.



Do not use when humans or animals are within  
100 feet from the launch point

# Replacement Parts

WEED RAZER	PART #
A. Handle with Black Grip	580143
B. Angled Handle	580139
C. Blade with Cover (single)	580122
D. Triangle Support Bracket (Set of 2)	580250
E. Handle Connector with 2 Spring Clips	580145
F. Weed Deflector Set	580144
K. Rope (25')	580146
L. Blade Sharpener	580372
Blade Cover (Single)	580135
Hardware Kit (G, I, J)	580149

## ONE YEAR MANUFACTURER'S WARRANTY:

**1-Year Manufacturer's Warranty** – Jenlis, Inc. warrants this product to be free from defects in workmanship and materials, under normal, non-commercial use and conditions, for a period of (1) one year from the original invoice date. **Warranty Limitations** – Damage resulting from use in commercial environment, misuse, abuse, negligence, and/or accidents. The manufacturer agrees, at its option during the warranty period, to repair any defect in material or workmanship, or to furnish a repaired or refurbished product without charge. All warranty claims must be sent to Jenlis, at the customer's expense. Return shipping will be pre-paid. All returns must be pre-approved. Please visit [www.weedrazer.com/warranty](http://www.weedrazer.com/warranty) for an RMA number prior to returning product. Returns without RMA's will be refused.