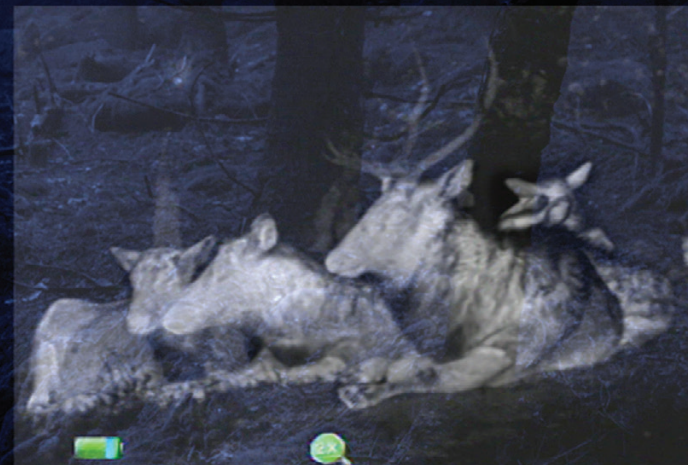


SCOUT III

THERMAL HANDHELD CAMERA

Scout III is the next generation of FLIR's field-proven line of Scout compact thermal monoculars. Offering enhanced performance with 30Hz or 60Hz imaging and advanced image processing, the Scout III family is ready for your next adventure in the great outdoors.



NEW PRODUCT



The World's Sixth Sense™



PROVEN PERFORMANCE

Identify predators and track game better than ever

- Detects heat signatures up to 1200 yards away, depending on model
- High speed 60Hz or 30Hz frame rate displays lifelike thermal video
- Crisp, clear 640 x 480 display screen



POWERFUL, YET SIMPLE

Starts up in seconds, no training required

- Easy-to-use buttons: Power, color palettes, E-Zoom and screen brightness
- Fast startup extends battery life by eliminating need for standby

COMPACT AND RUGGED

Fits in any pocket, weather and impact-resistant

- Single hand operation
- Light weight, only 12 ounces
- Weather-tight, ergonomic design
- >5-hour Rechargeable Li-ion battery



SCOUT III

	SCOUT III 240	SCOUT III 320	SCOUT III 640
SENSOR SPECIFICATIONS			
Detector Type	240 x 180 VOx Microbolometer	336 x 256 VOx Microbolometer	640 x 512 VOx Microbolometer
Video Refresh Rate	30Hz NTSC	60Hz NTSC	30Hz NTSC
Field of View (H x V)	24° x 18°	17° x 13°	18° x 14°
Focal Length	13 mm Fixed Focus	19mm Fixed Focus	35mm Fixed Focus
Start up	< 1.5 seconds		
Image Processing	FLIR Proprietary Digital Detail Enhancement™		
USER INTERFACE			
Zoom Button	Freeze Frame	2X Zoom	2X, 4X Zoom
Video Detection Palettes	Black Hot, White Hot, InstAlert™ and Graded Fire		
Brightness	Multiple Brightness Levels		
Task Light	LED (operational when imager power off)		
SYSTEM SPECIFICATIONS			
Display	640 X 480		
Video Output	NTSC composite video		
POWER			
Battery Type	Internal Li-Ion Cell		
Battery Life (Operating)	>5 hours, Auto-off after 5 minutes of non-use		
ENVIRONMENTAL			
Rating	IP-67, Submersible		
Operating Temp.	-4°F to 122°F (-20°C to 50°C)		
Storage Temp.	-40°F to 140°F (-40°C to 60°C)		
PHYSICAL			
Weight (incl. lens)	12 oz (340 g)		
Size (L x W x H)	6.70" x 2.31" x 2.44"		
Color (housing)	Flat Dark Earth		
RANGE PERFORMANCE			
Detect Man (1.8 m x 0.5 m)	380yd (350m)	600yd (550m)	1200yd (1140m)
PACKAGES INCLUDE			
Handheld Thermal Camera, USB Power Adapter/Charger, Wrist strap, Custom Video out cable (320 & 640 version), USB Cable, Quick Start Guide, Molle bag			

AMERICAS

Billerica
25 Esquire Road
N. Billerica, MA 01862
USA
1-866-404-5627

CORPORATE HEADQUARTERS

Portland
27700 SE Parkway Ave.
Wilsonville, OR 97070
USA
877-773-3547

Equipment described herein requires US Government authorization for export purposes. Diversion contrary to US law is prohibited. Specifications are subject to change without notice. ©2016 FLIR Systems, Inc. All rights reserved. [Created 12/22/15]