



The European Platform on Learning Mobility in the Youth Field



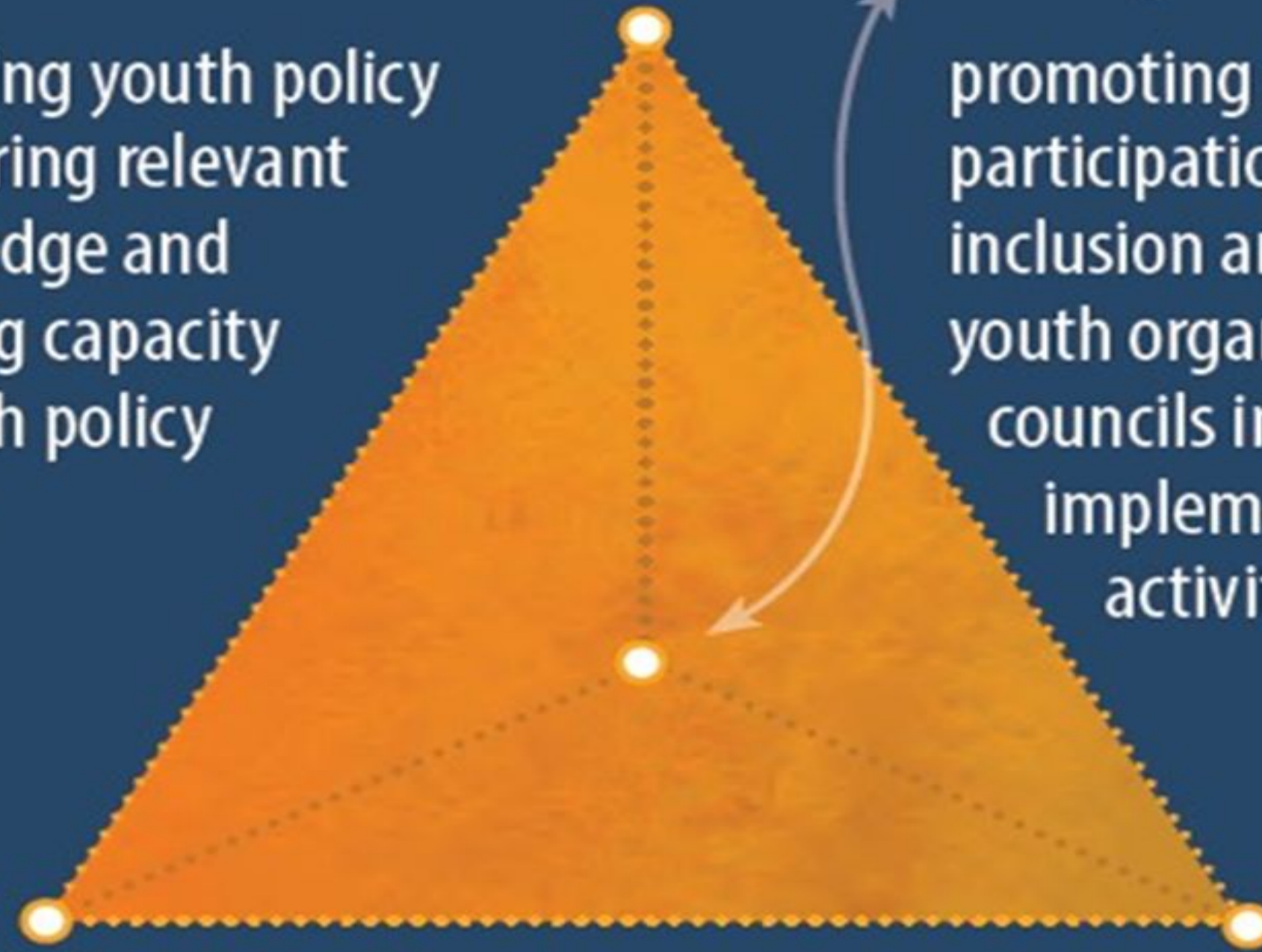
What is the European Platform on Learning Mobility (EPLM)?

Youth **POLICY:**

informing youth policy by offering relevant knowledge and building capacity of youth policy actors.

Young **PEOPLE:**

promoting young people's participation and social inclusion and involving youth organisations/ councils in planning and implementing our activities.

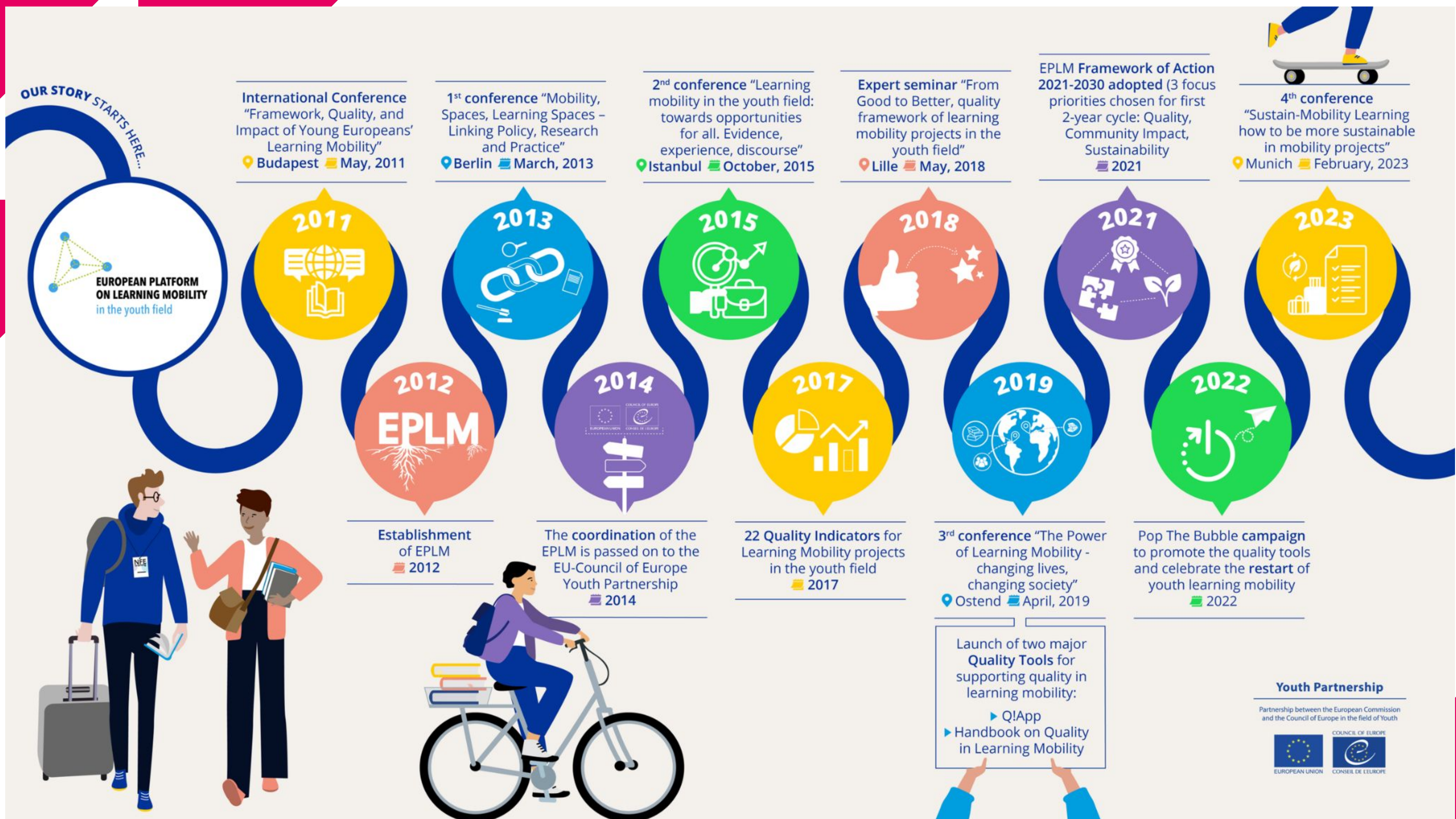


Youth **RESEARCH:**

developing knowledge on youth to better understand current and upcoming challenges and trends in the lives of young people, and their implications for youth policy and youth work.

Youth **WORK:**

promoting and strengthening youth work and recognition of its contribution to, *inter alia*, youth participation and the social inclusion of young people.



The European Platform on Learning Mobility in the youth field aims to

1. provide a platform for cooperation and exchange of researchers, policy makers, youth workers, youth organisations and young people;
2. provide a space for communication between structures and actors of non-formal and informal learning in relation to learning mobility;
3. deepen knowledge and understanding of learning mobility in Europe and provide a mapping of existing research,
4. support the implementation of the European Youth Work Agenda, notably in the area of international youth work;
- 5. contribute to the implementation of the Council Recommendation “Europe on the Move – learning mobility opportunities for everyone”**