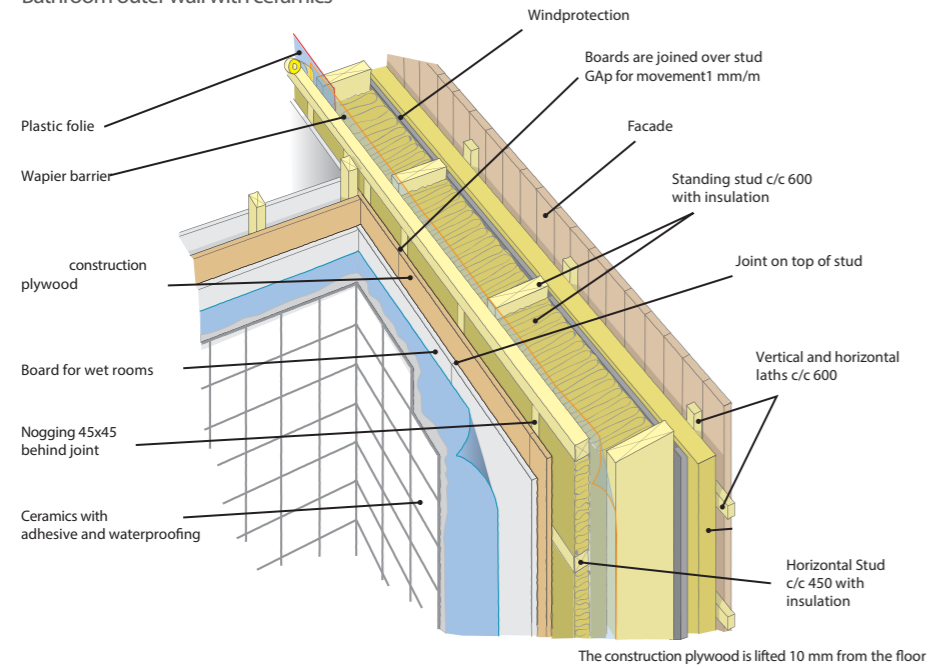
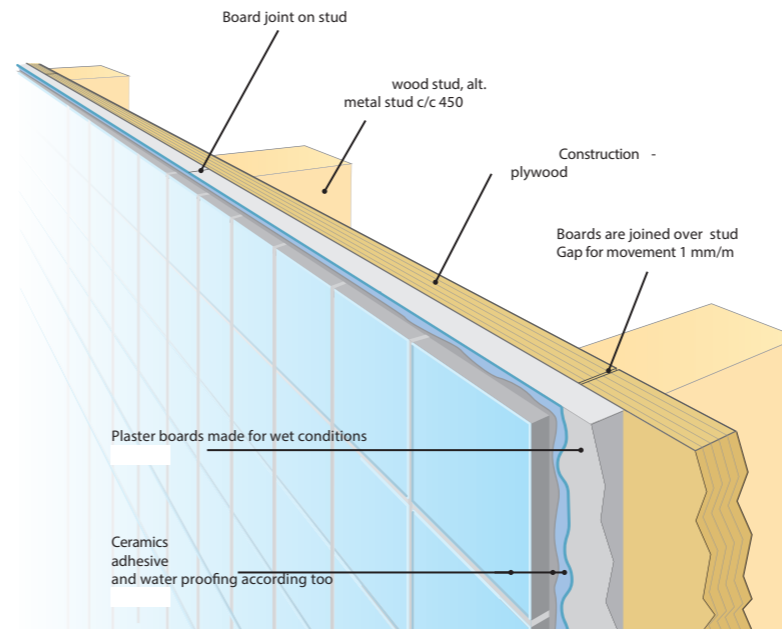


Bathroom outer wall with ceramics



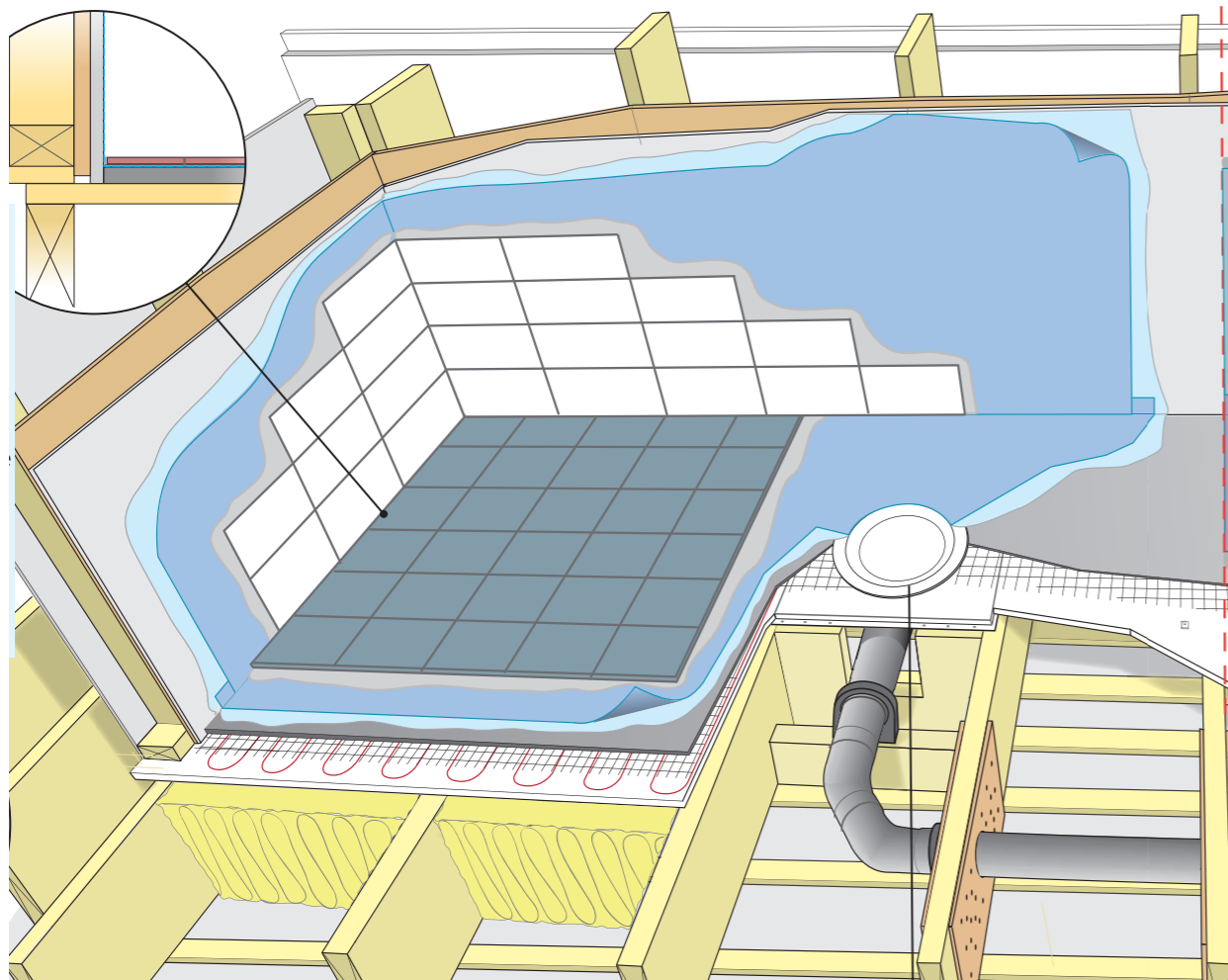
Bathroom inner wall with ceramics



## WET ROOMS IN AVRAME BUILDING

We do suggest to use flexible wall and floor coverings.

If you decide to go for tiles then you should follow guidelines visually explained on diagrams. As wood is „living“ material it may expand or contract a bit and such movement may cause tiles to pop off.



### The correct method for drilling and screwing

