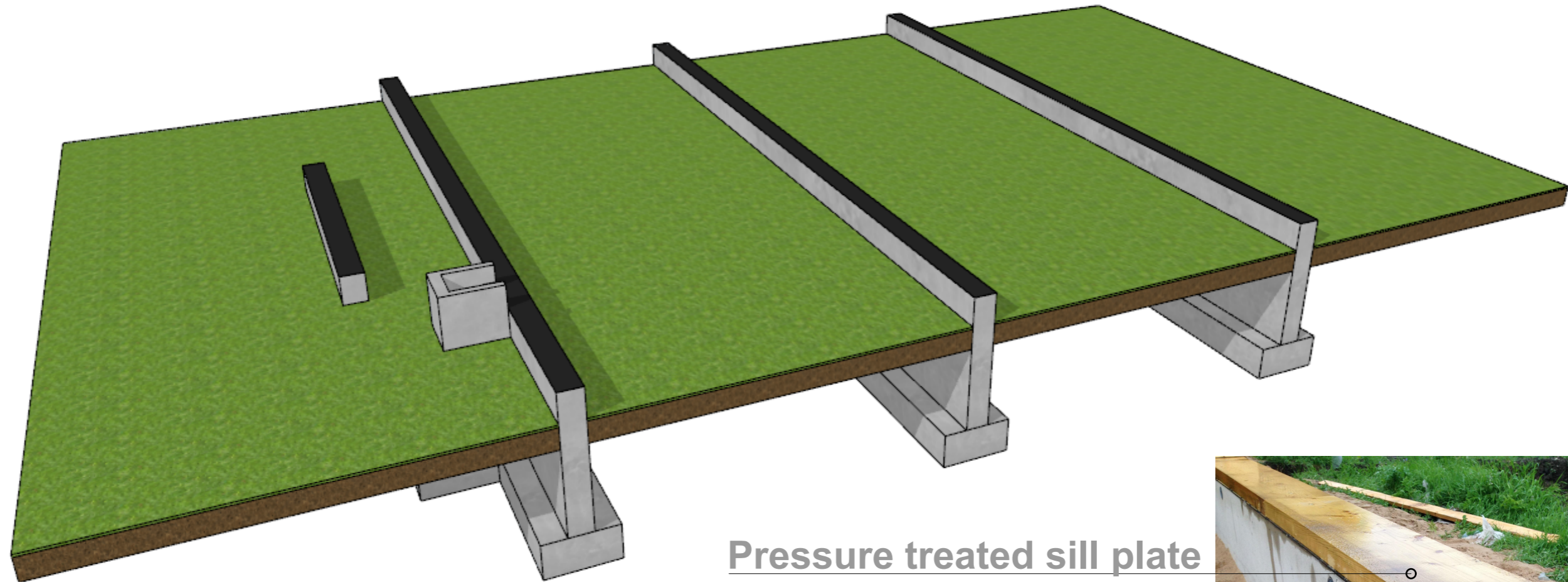


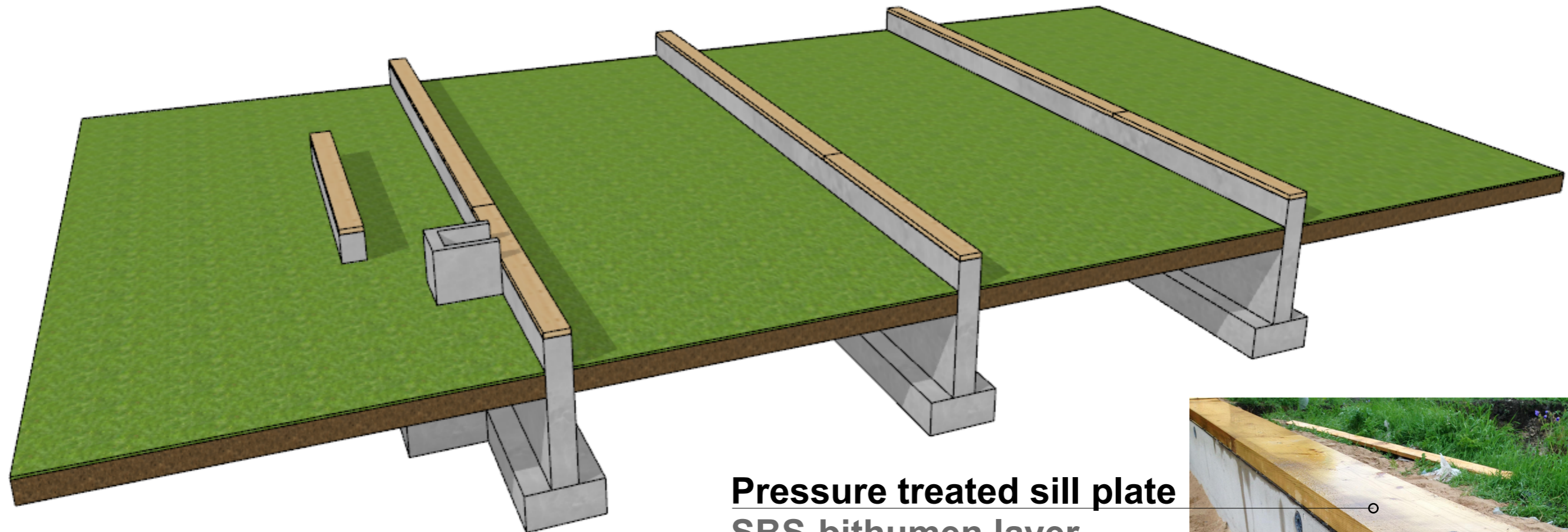
**1.SBS-bithumen layer between concrete and pressure treated sill plate**  
**Work hours with 2 men crew ca 1h**



Pressure treated sill plate  
**SBS-bithumen layer**  
Foundation



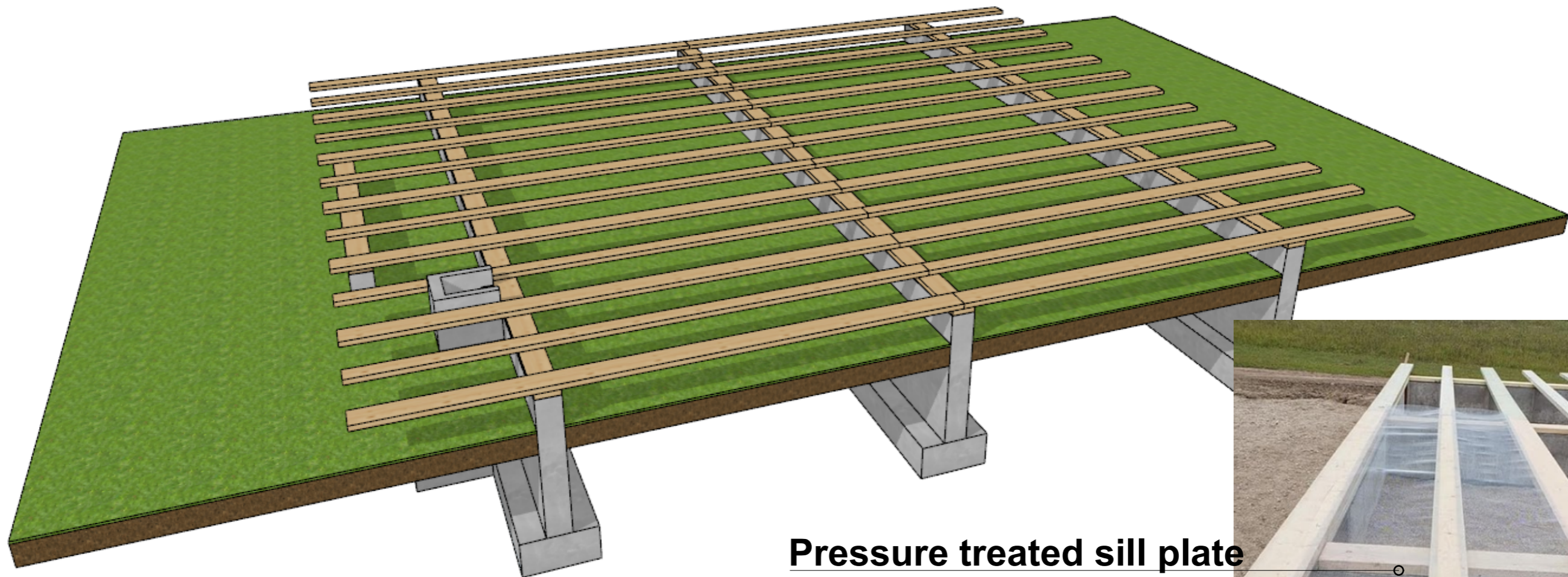
## **2. Pressure treated timber sill plate** **Work hours with 2 men crew ca 2h**



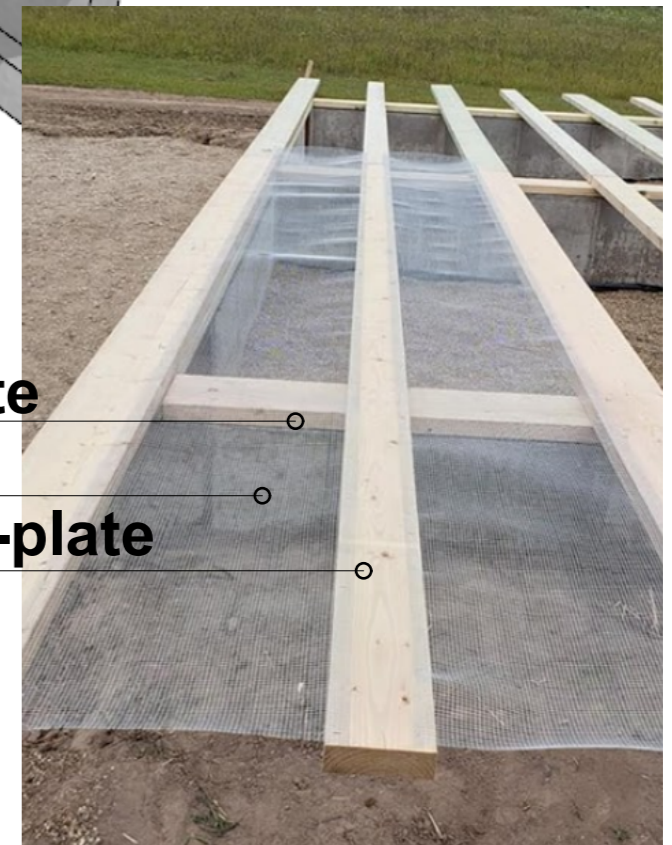
**Pressure treated sill plate**  
**SBS-bithumen layer**  
**Foundation**



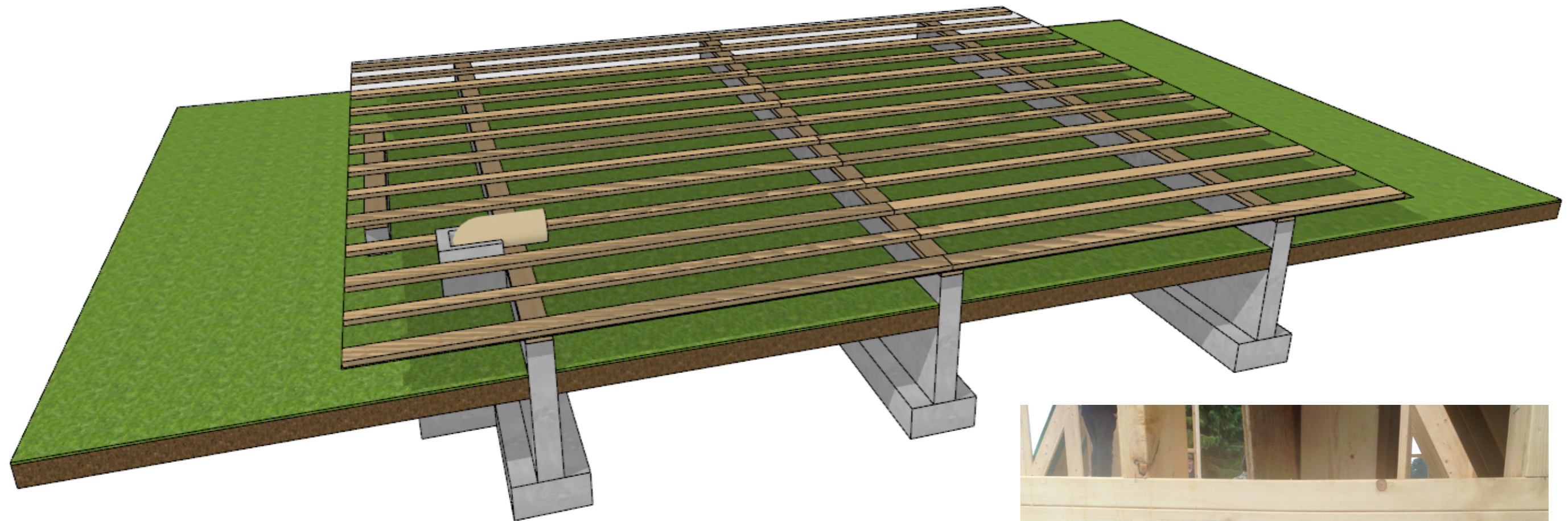
**3. Timber sleepers to support OSB- plate**  
**Work hours with 2 men crew ca 3h**



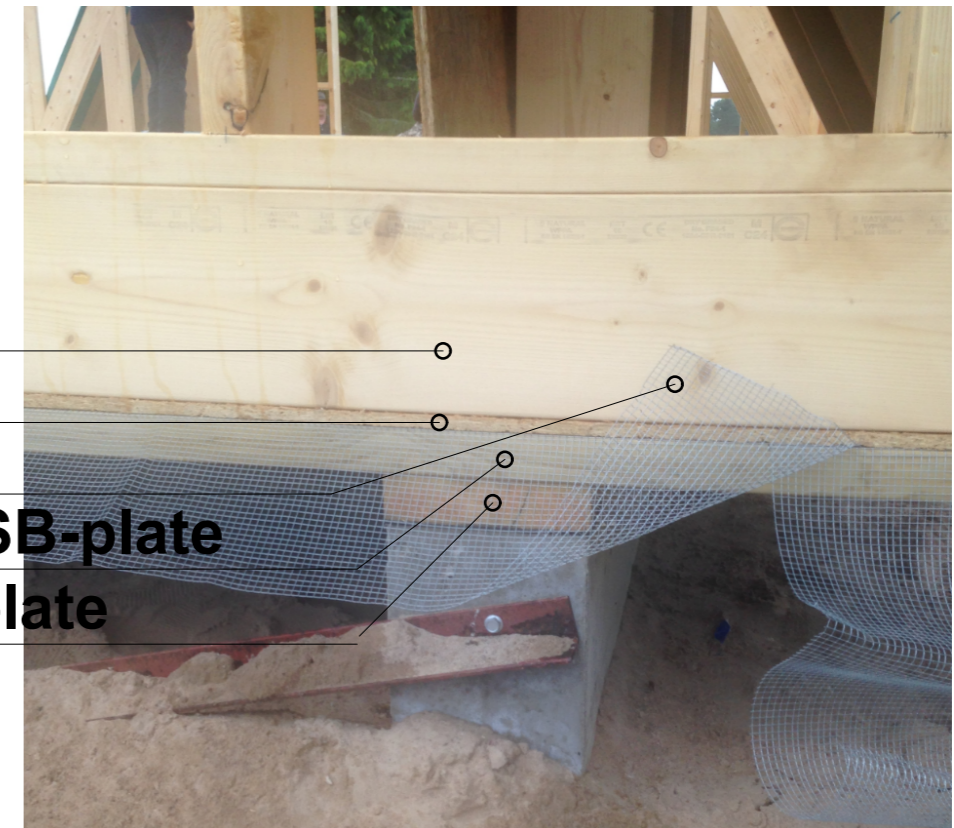
**Pressure treated sill plate**  
**Rodent mesh**  
**Battens to support OSB-plate**



**4. Rodent mesh under OSB-plate**  
**Work hours with 2 men crew ca 2h**

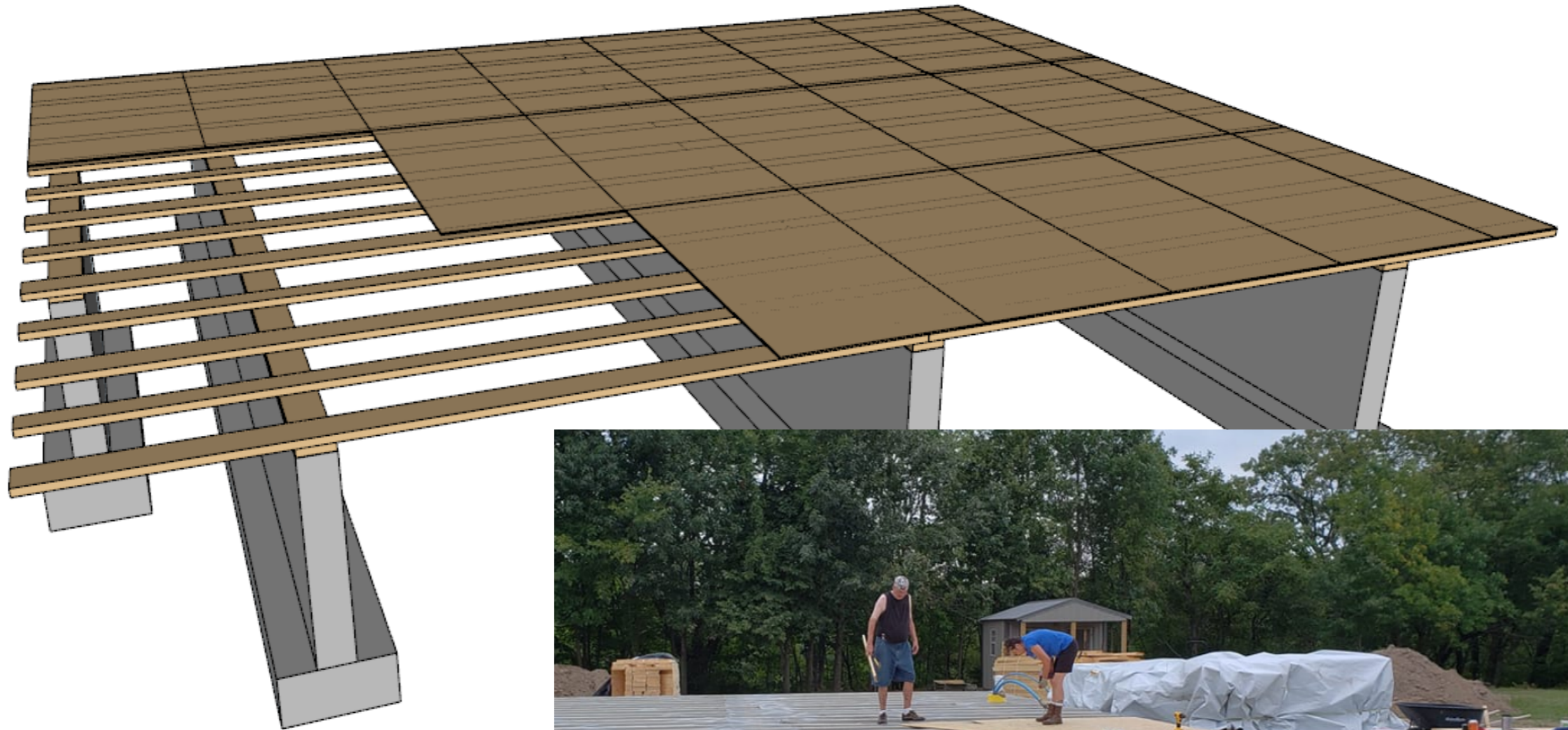


- Trusses**
- OSB-plate**
- Rodent mesh**
- Battens to support OSB-plate**
- Pressure treated sill plate**

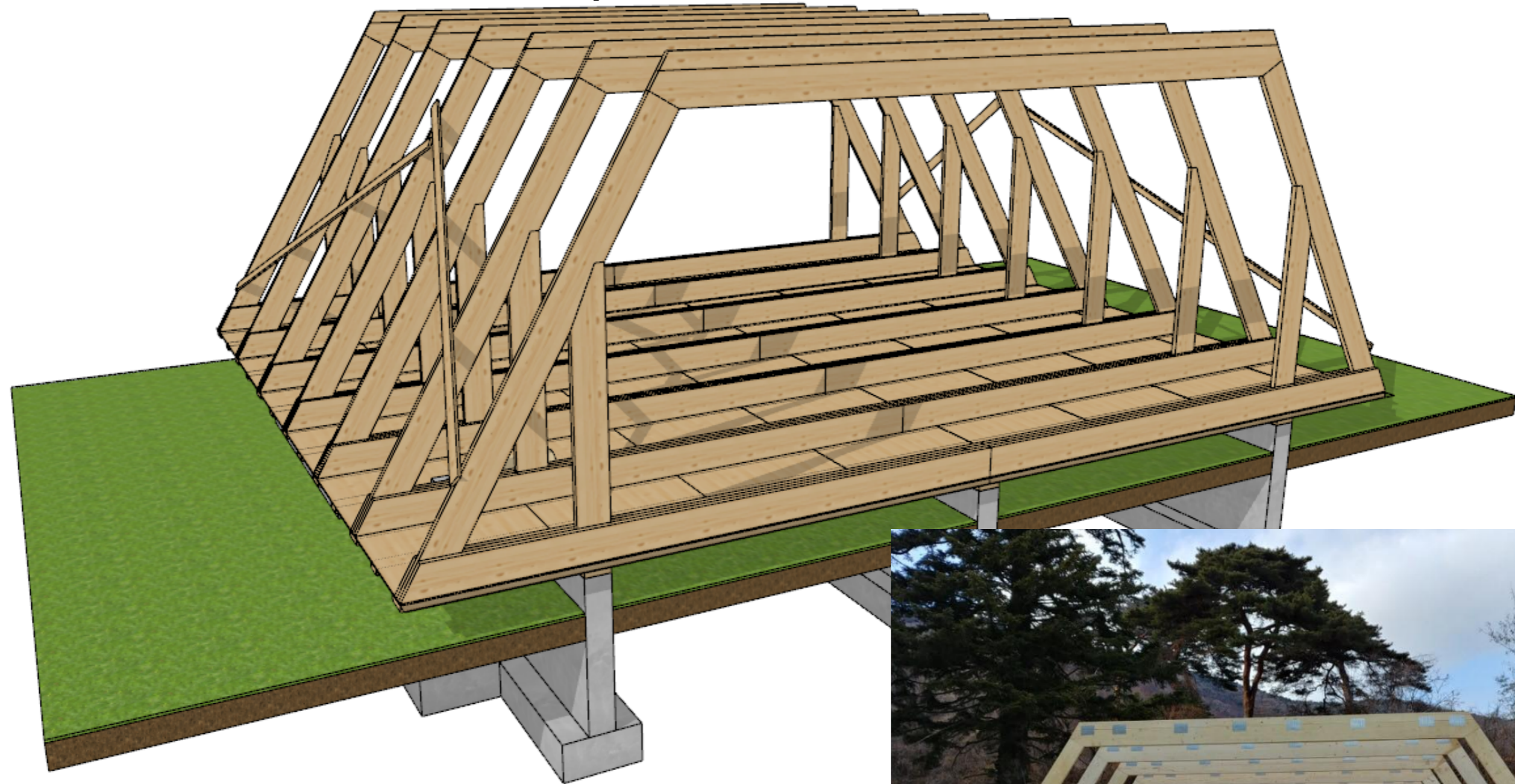


## 5.OSB-plate installation

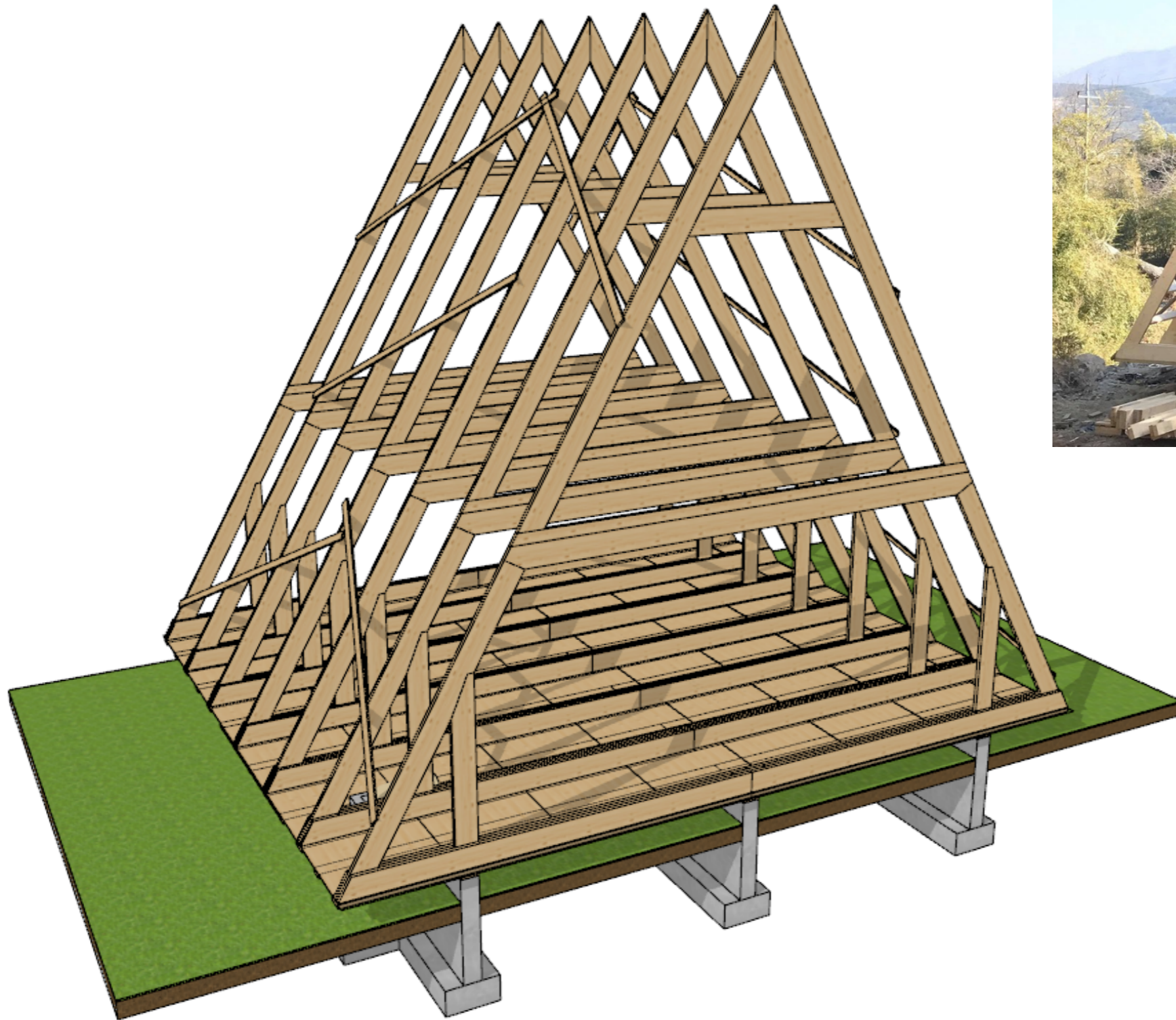
Work hours with 2 men crew ca 4h



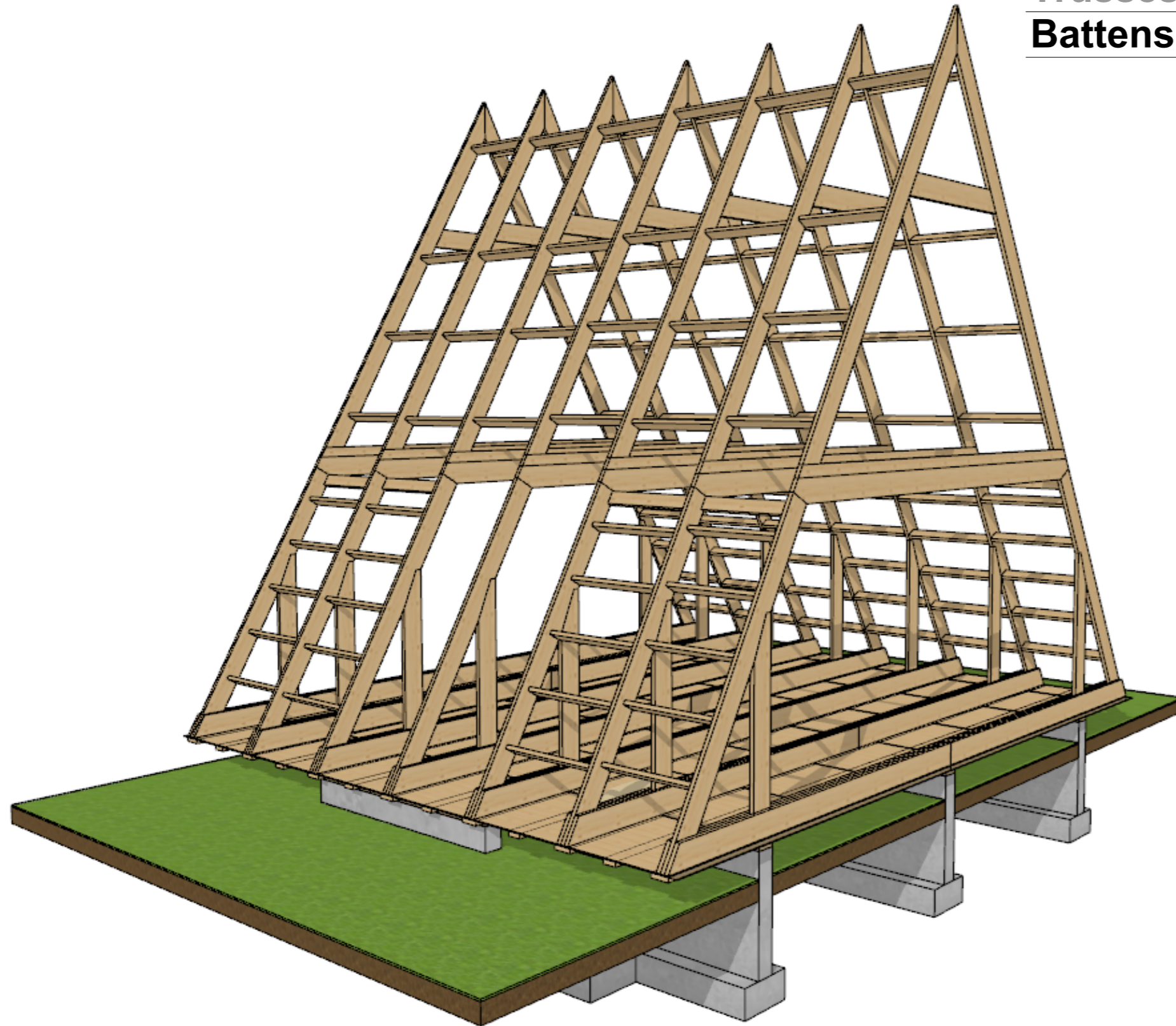
**6. Assemble and install lower part of the trusses**  
**Work hours with 2 men crew ca 2h per truss**



**7. Assemble and install upper part of the trusses**  
**Work hours with 2 men crew ca 2h per truss**



**8. Install battens between trusses**  
**Work hours with 2 men crew ca 6h**

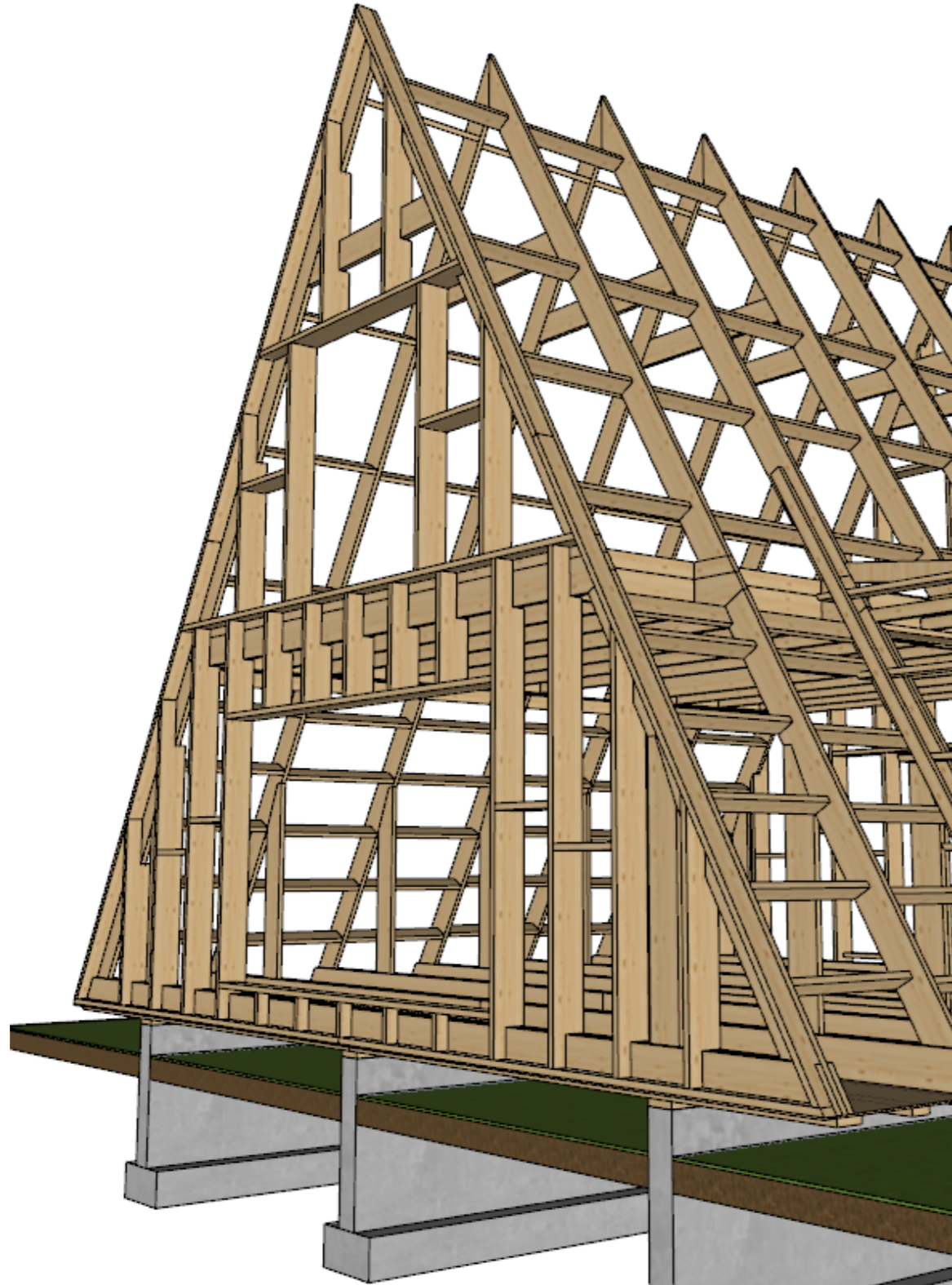


Trusses  
Battens

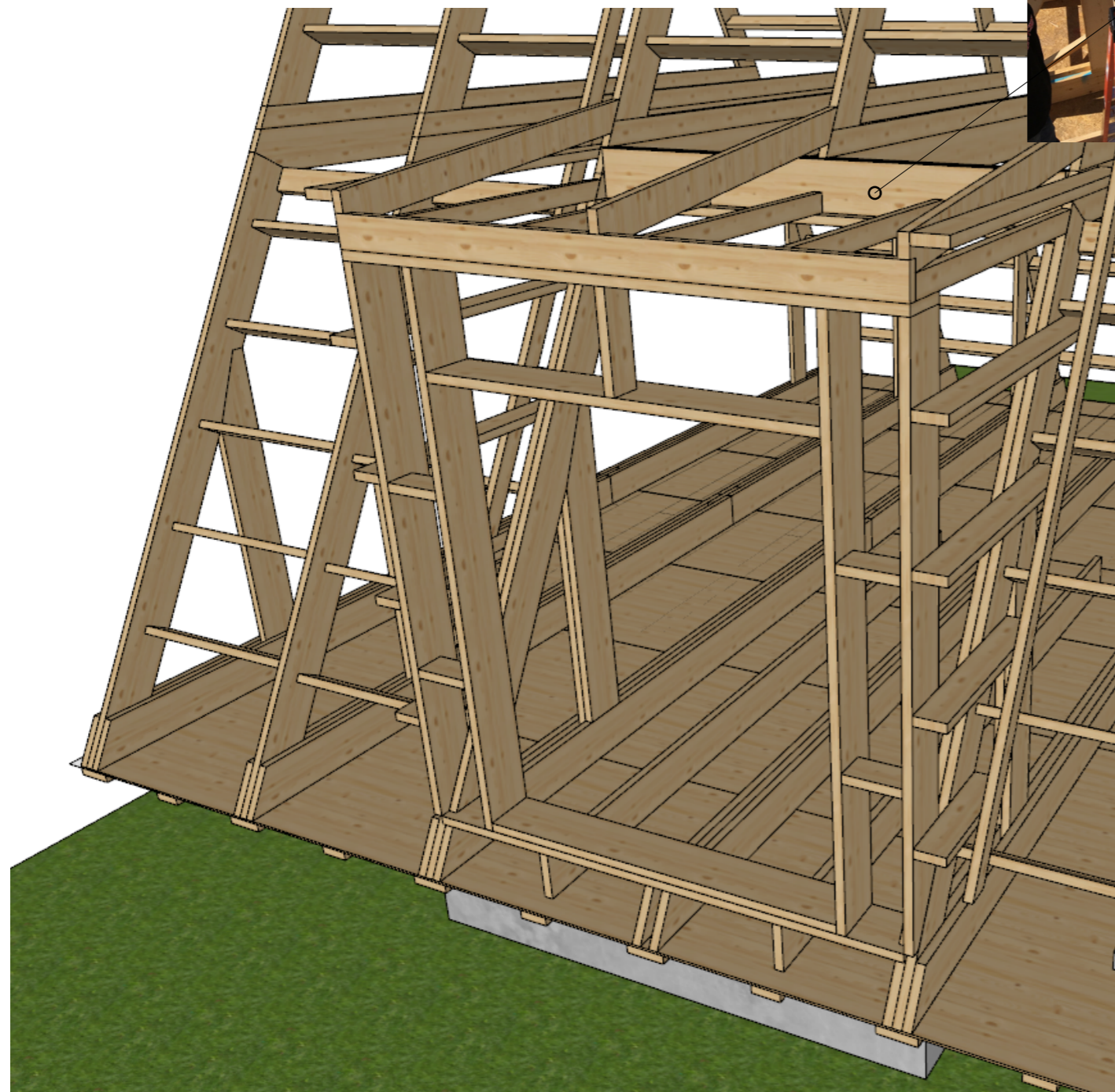




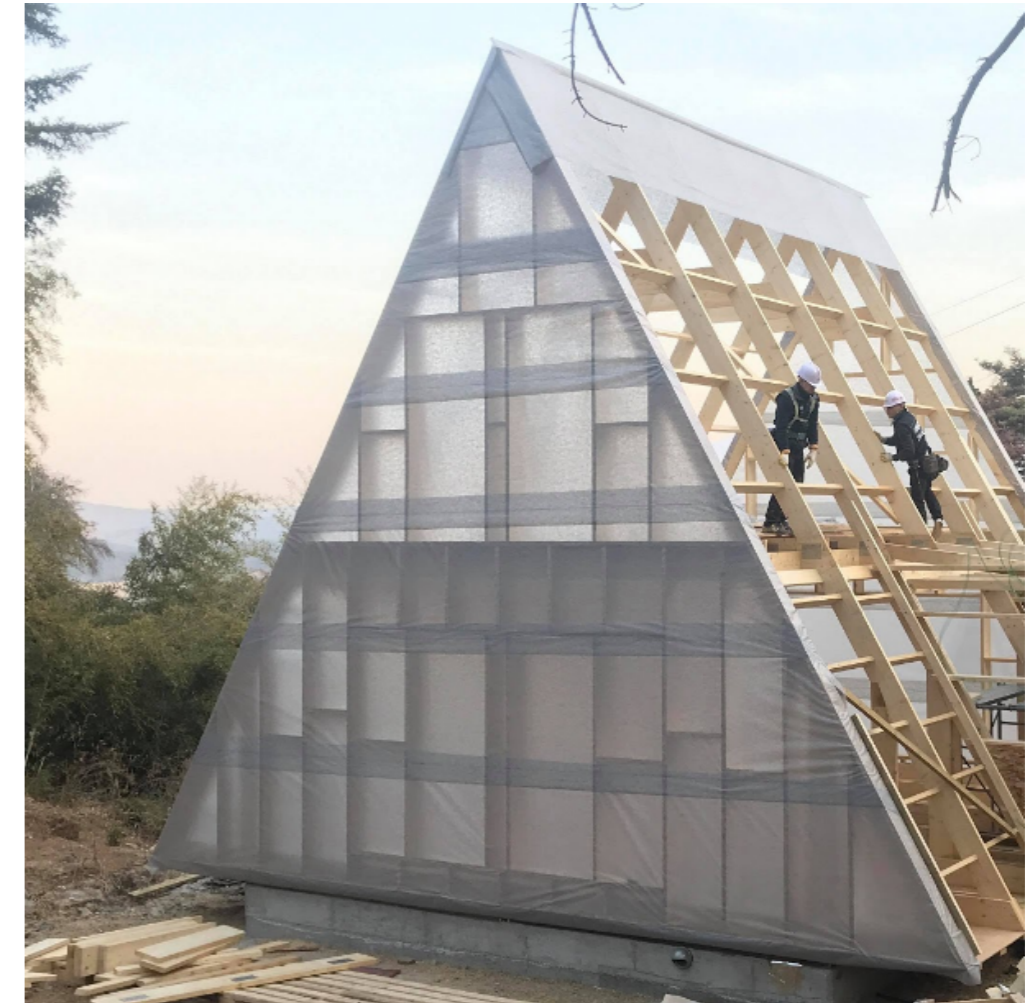
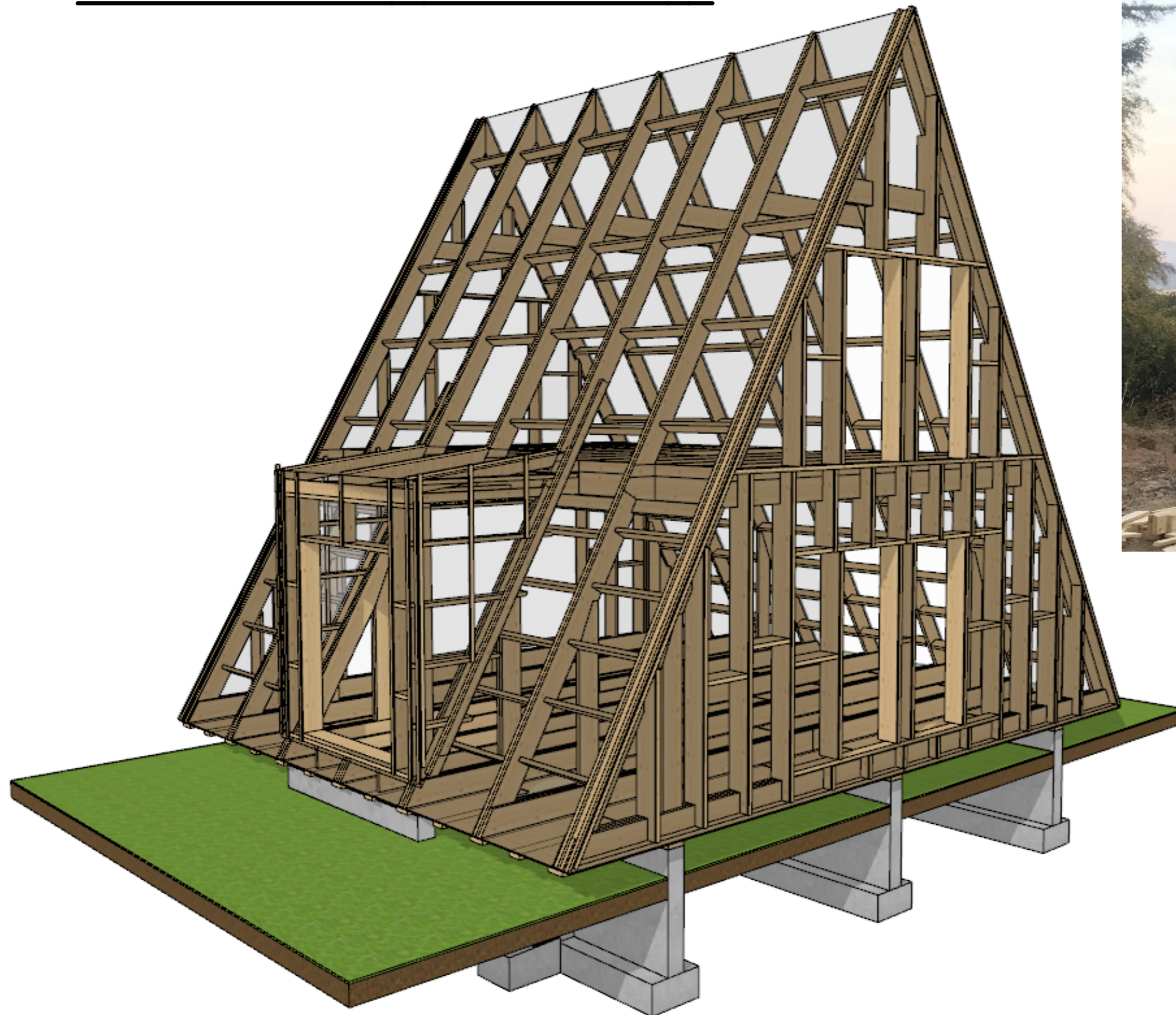
**9. Install gable walls**  
**Work hours with 2 men crew ca 16h**



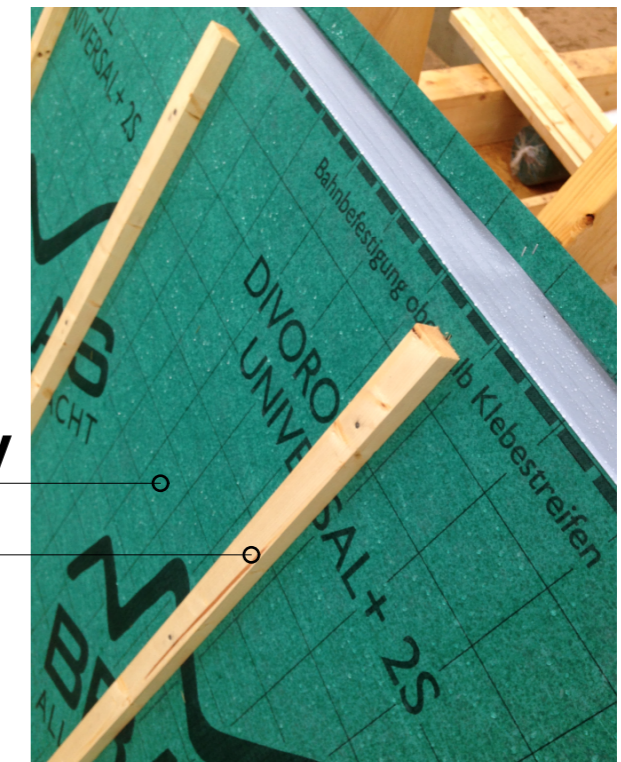
**10. Install dormer**  
**Work hours with 2 men crew ca 8h**



## 11. Breathable underlay and vertical battens Work hours with 2 men crew ca 8h

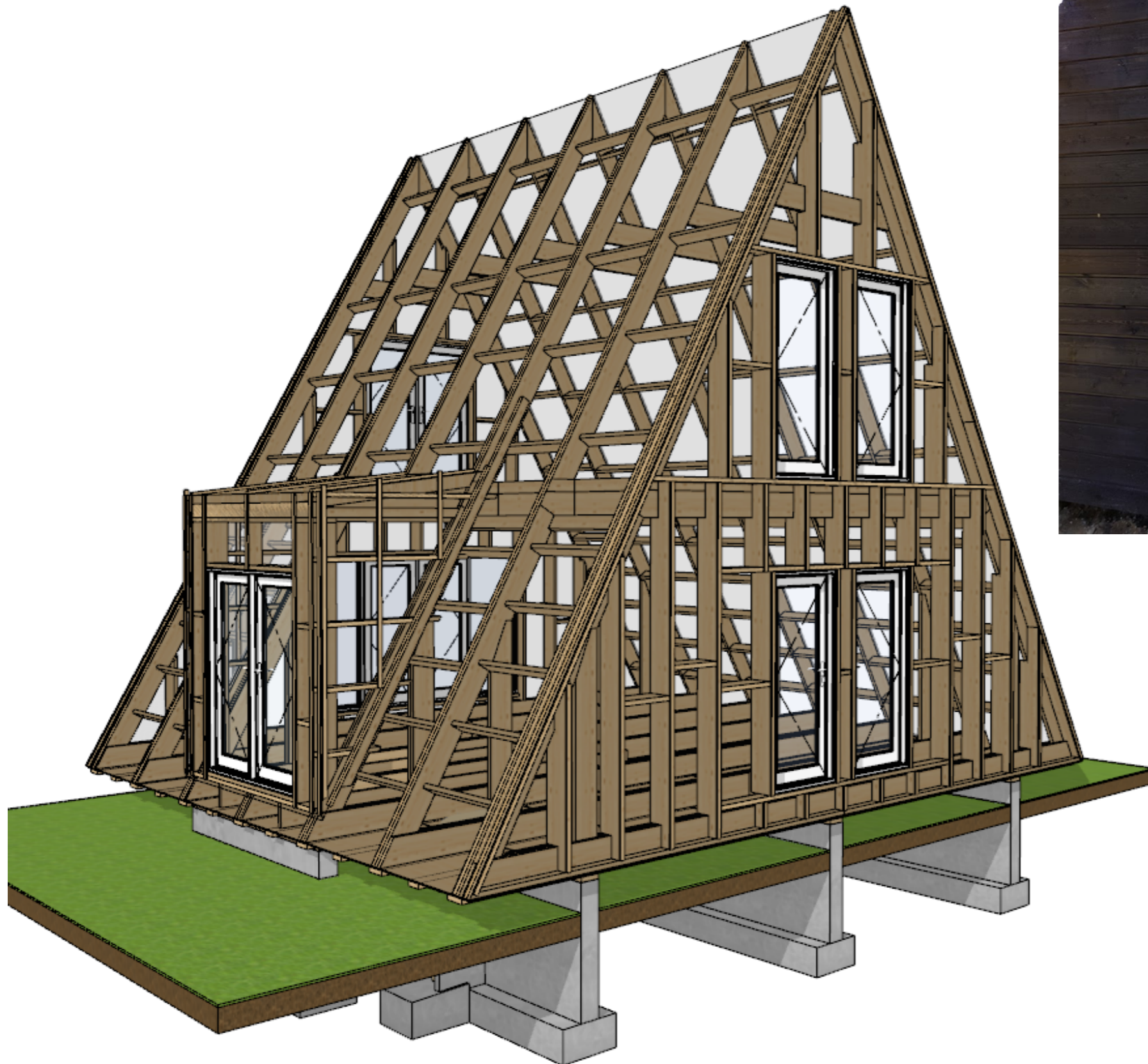


**Underlay  
Battens**



## 12. Install Doors and Windows

Work hours with 2 men crew ca 8h



**13. Horizontal battens for roofing and cladding**  
**Work hours with 2 men crew ca 16h**



## 14. Roofing material

Work hours with 2 men crew ca 24h

### Selection of colors (Ruukki Classic C):



RR41 DARK SILVER MATT



RR750 TILE RED



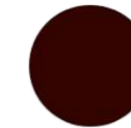
RR32 КАФЯБ



RR29 RED



RR2H3 ANTHRACITE



RR887 CHOCOLATE BROWN



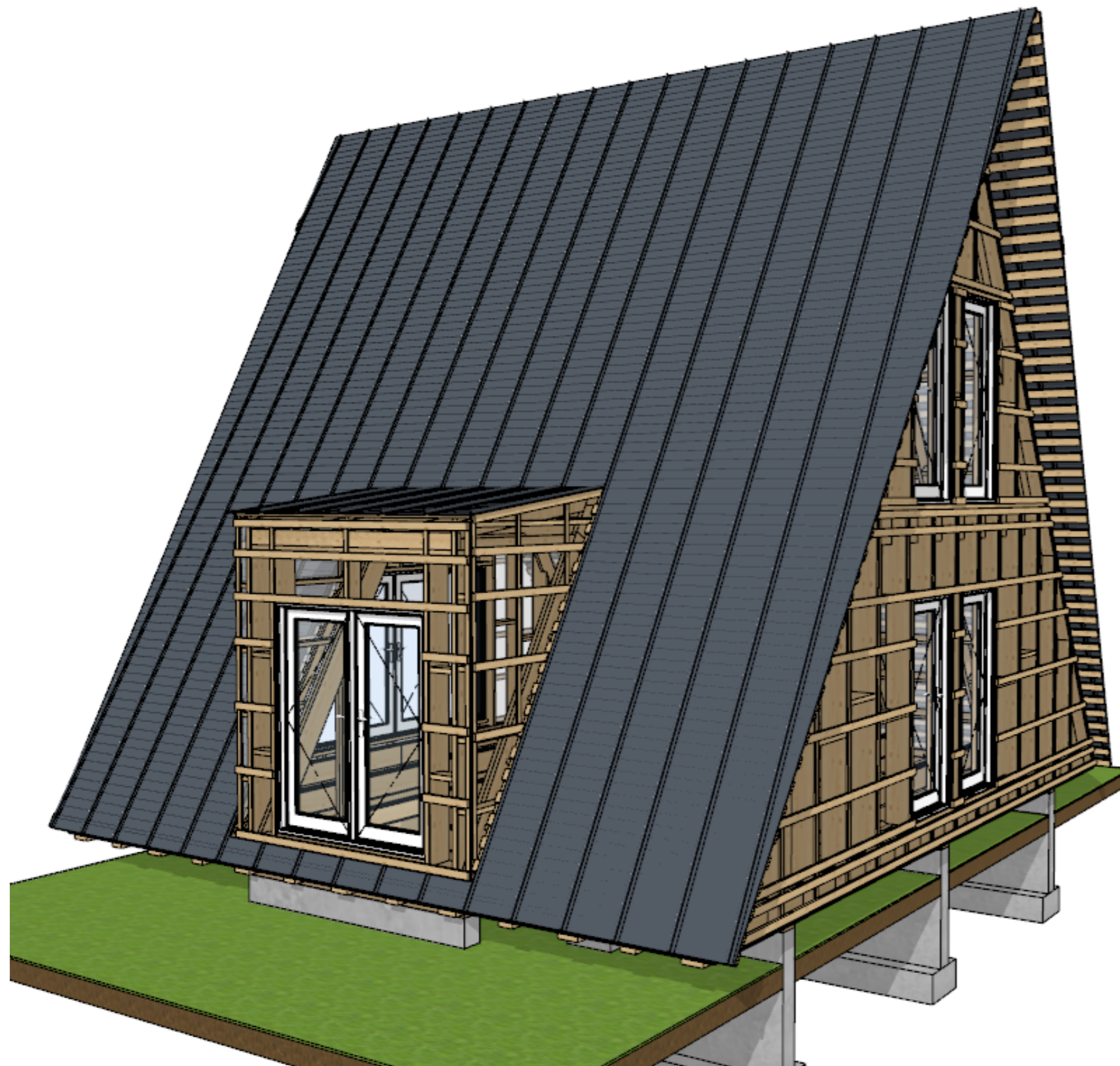
RR33 BLACK



RR22 GREY

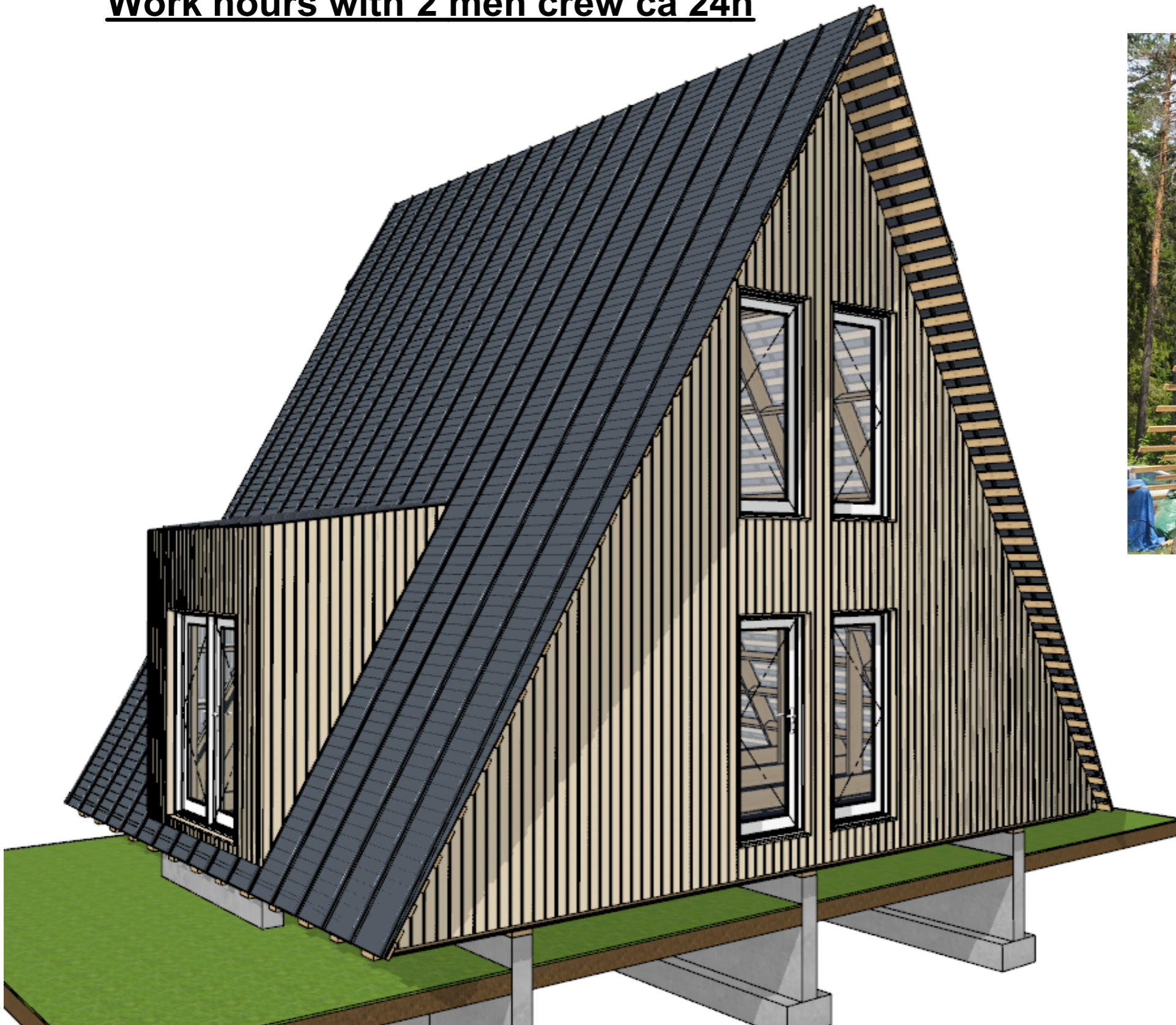


RR23 DARK GREY

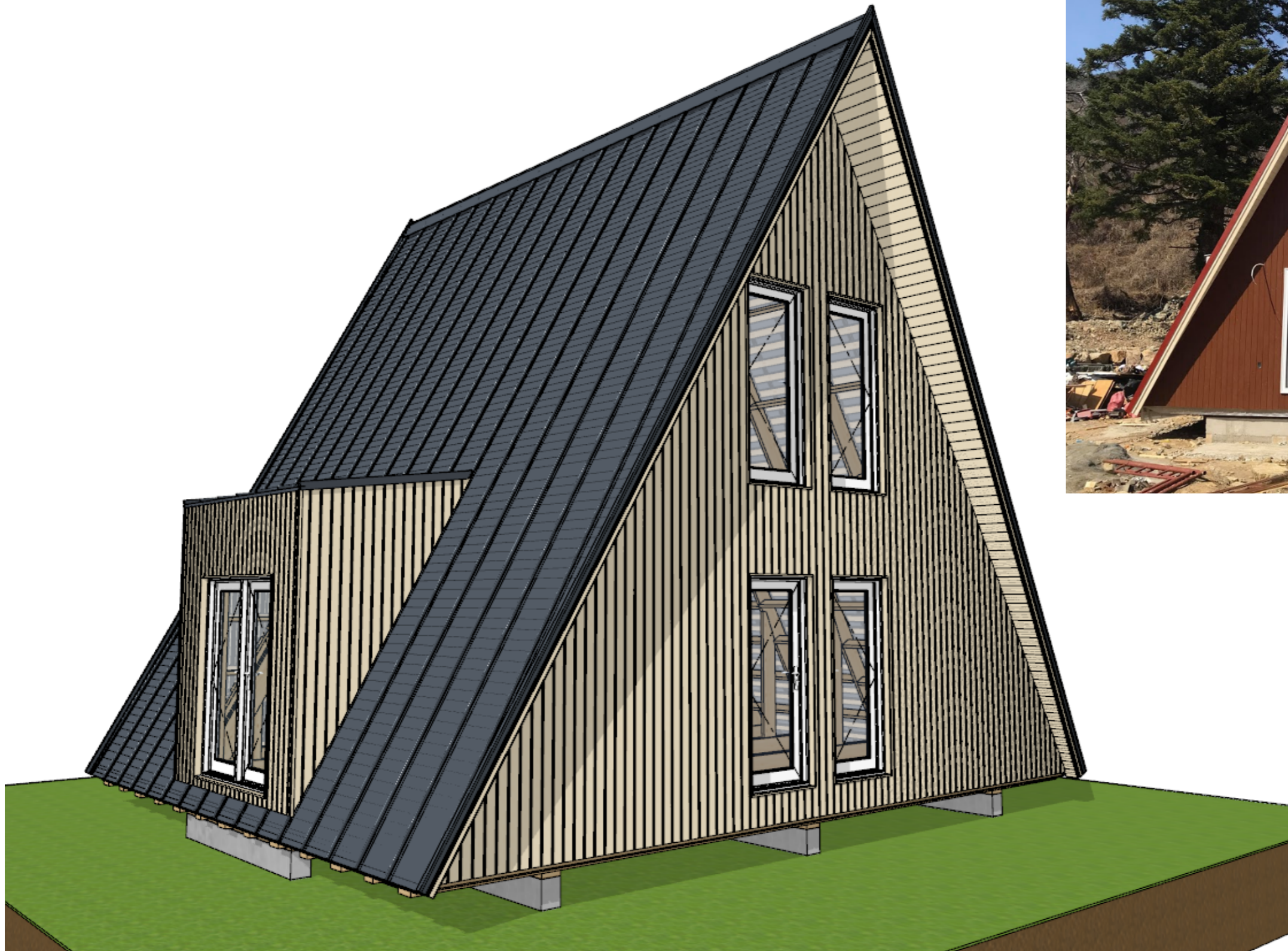


## 15. Cladding

Work hours with 2 men crew ca 24h



**16.Eaves and gable board**  
**Work hours with 2 men crew ca 16h**





**17. Viking theme decorations**  
**Work hours with 2 men crew ca 6h**

