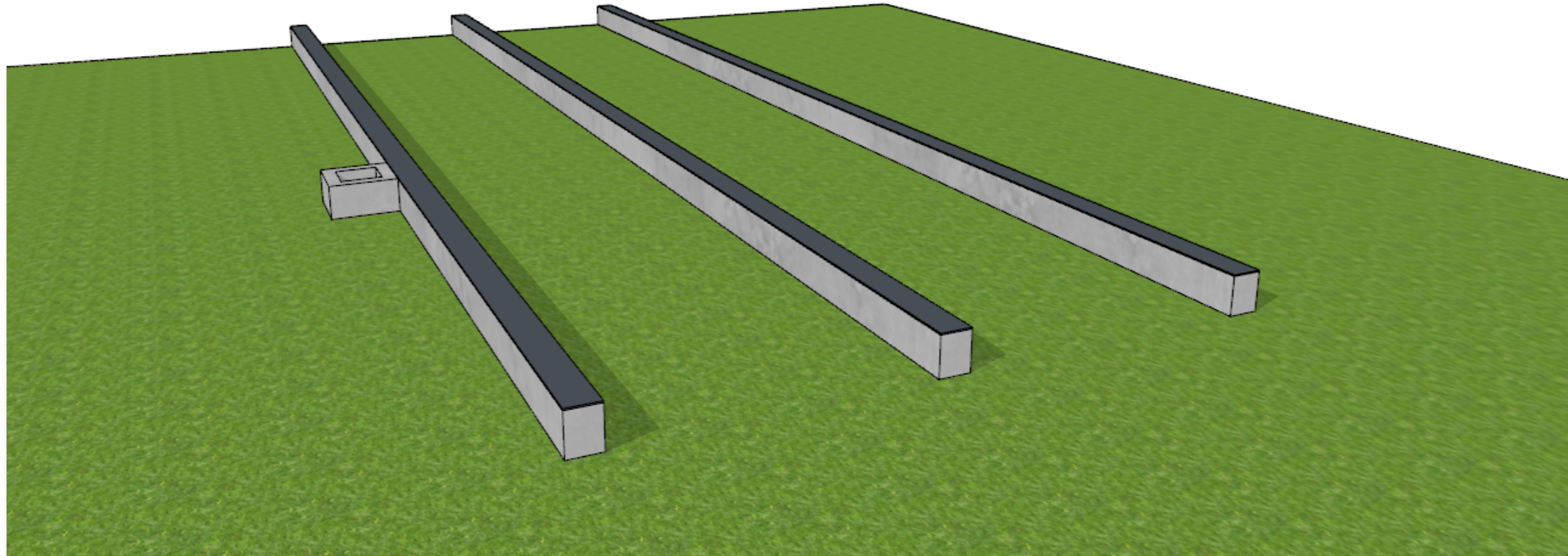


1.SBS-bithumen layer between concrete and pressure treated sill plate

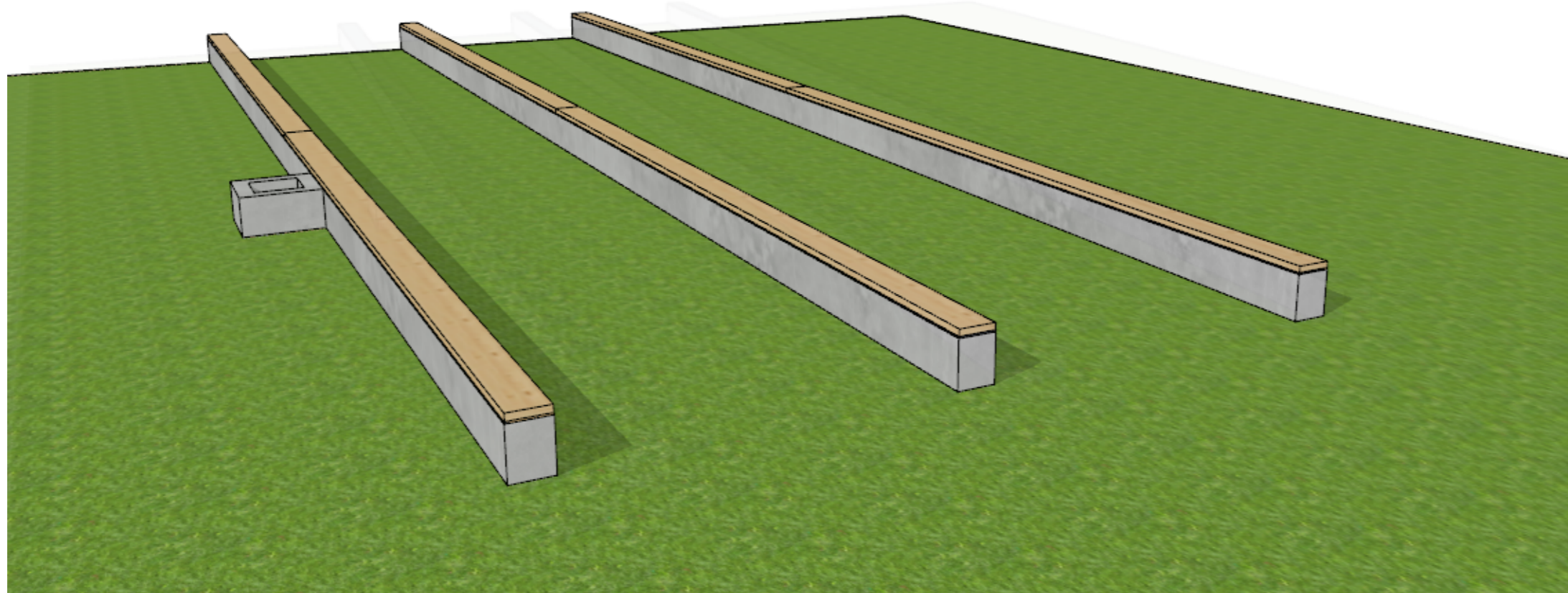
Work hours with 2 men crew ca 1h



Pressure treated sill plate
SBS-bithumen layer
Foundation



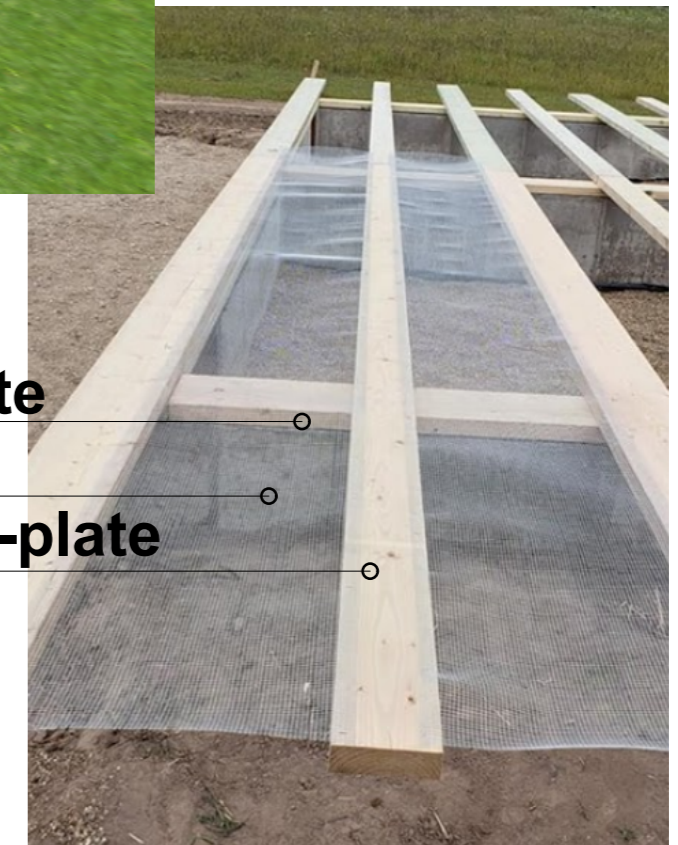
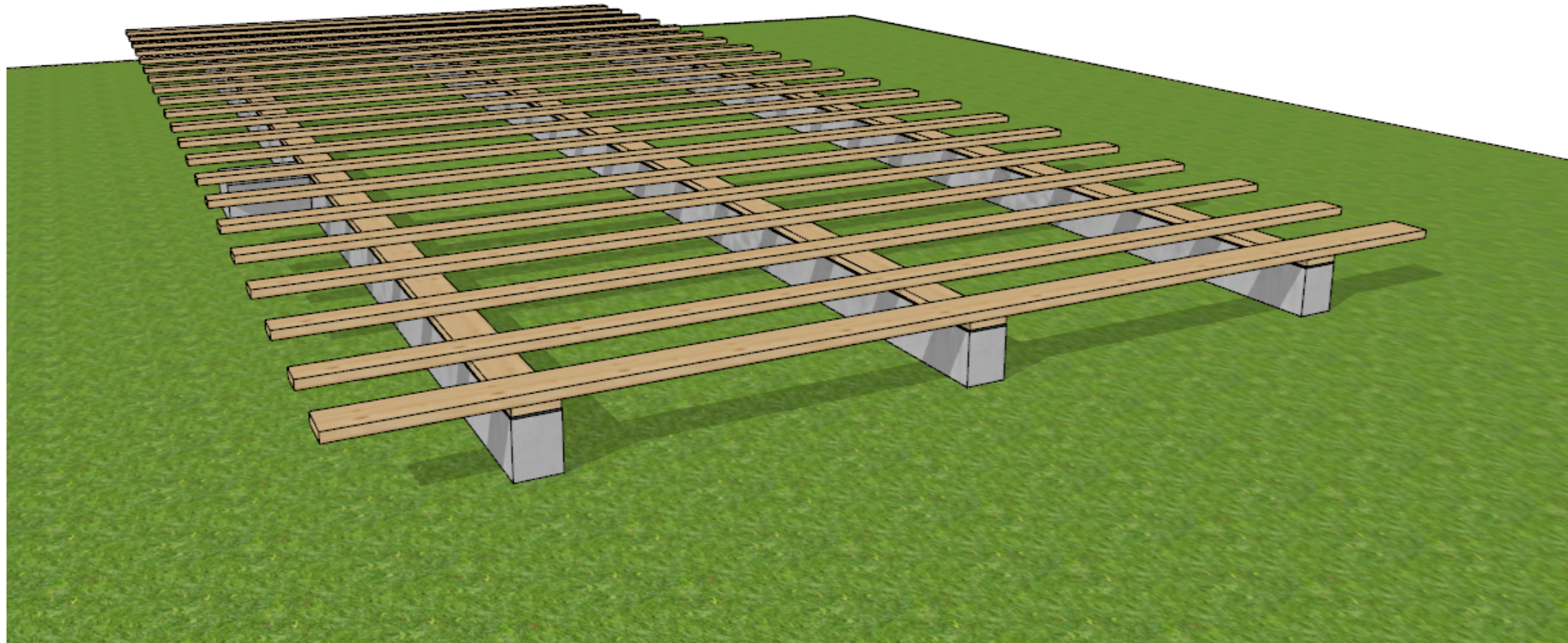
2. Pressure treated timber sill plate Work hours with 2 men crew ca 2h



Pressure treated sill plate
SBS-bithumen layer
Foundation

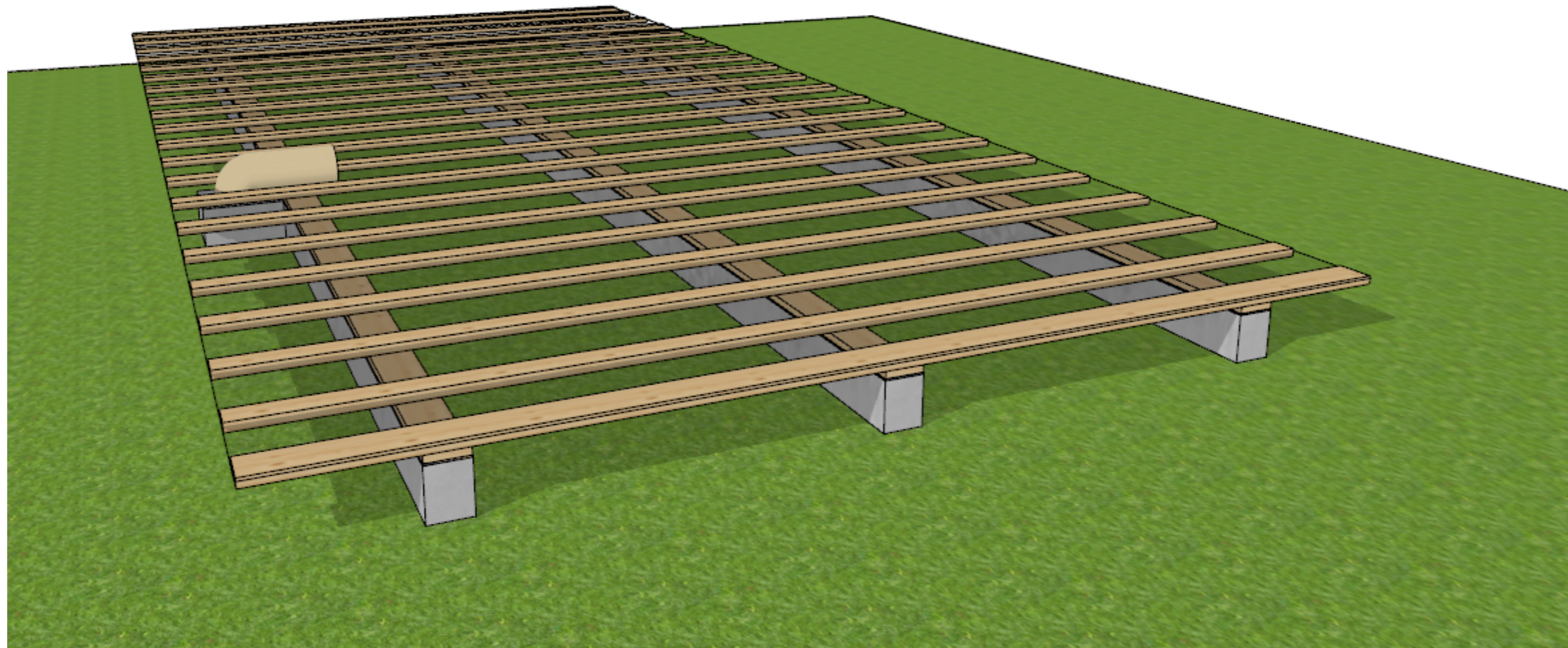


3. Timber sleepers to support OSB- plate Work hours with 2 men crew ca 3h

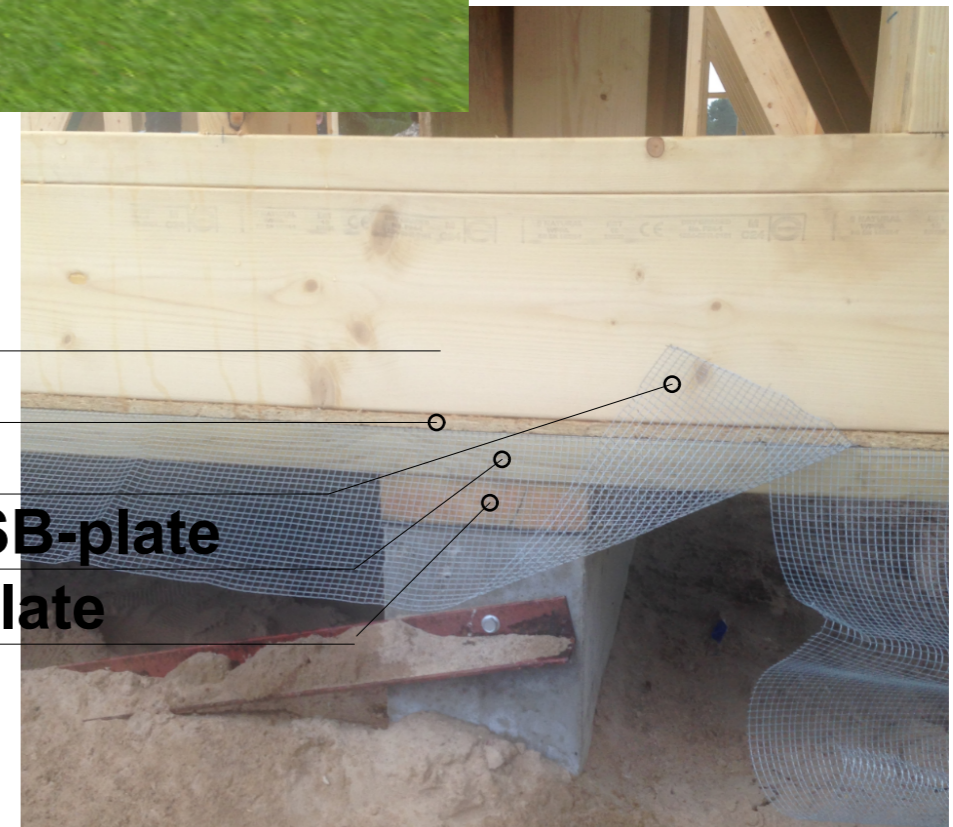


Pressure treated sill plate
Rodent mesh
Battens to support OSB-plate

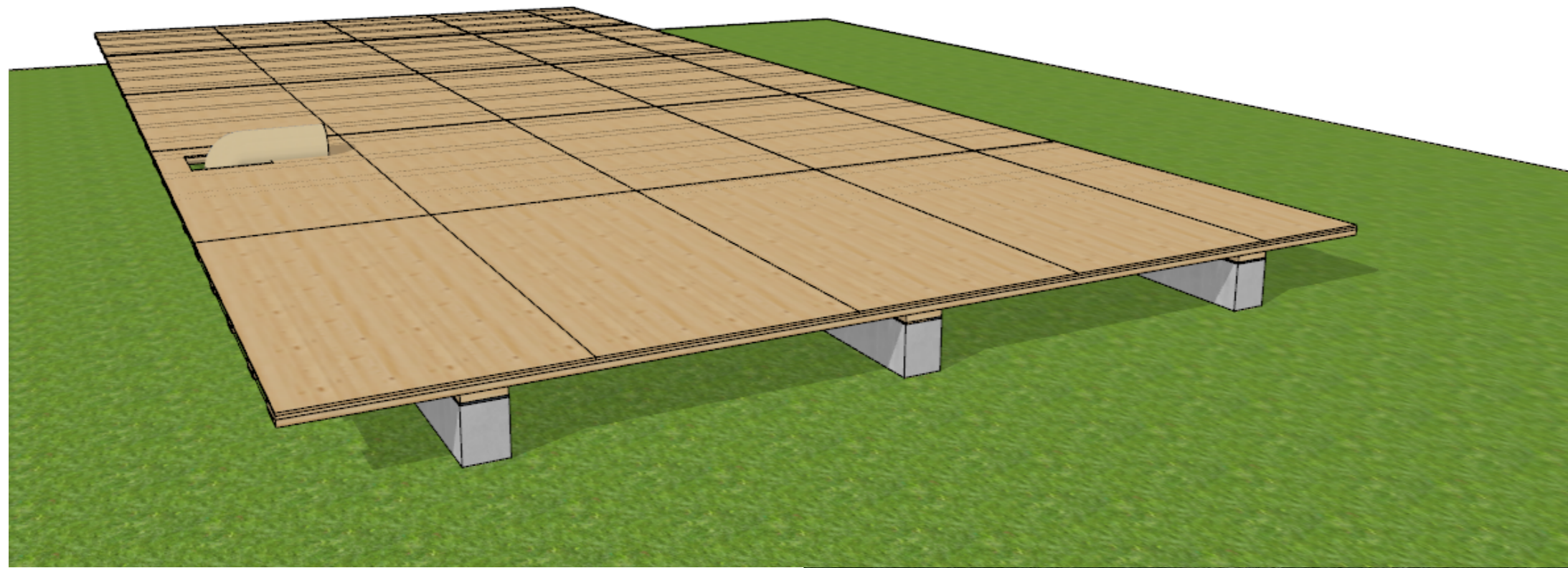
4. Rodent mesh under OSB-plate Work hours with 2 men crew ca 2h



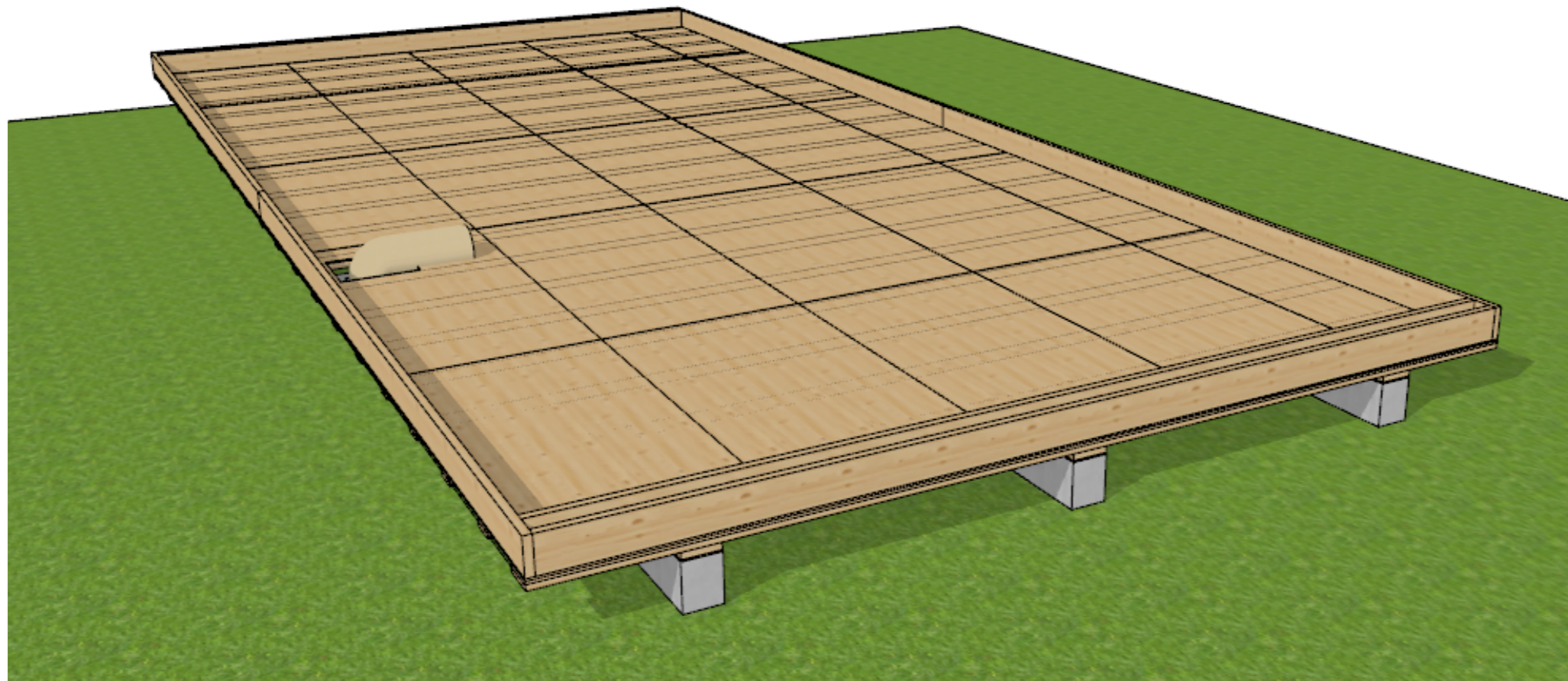
Trusses
OSB-plate
Rodent mesh
Battens to support OSB-plate
Pressure treated sill plate



5.OSB-plate installation Work hours with 2 men crew ca 4h

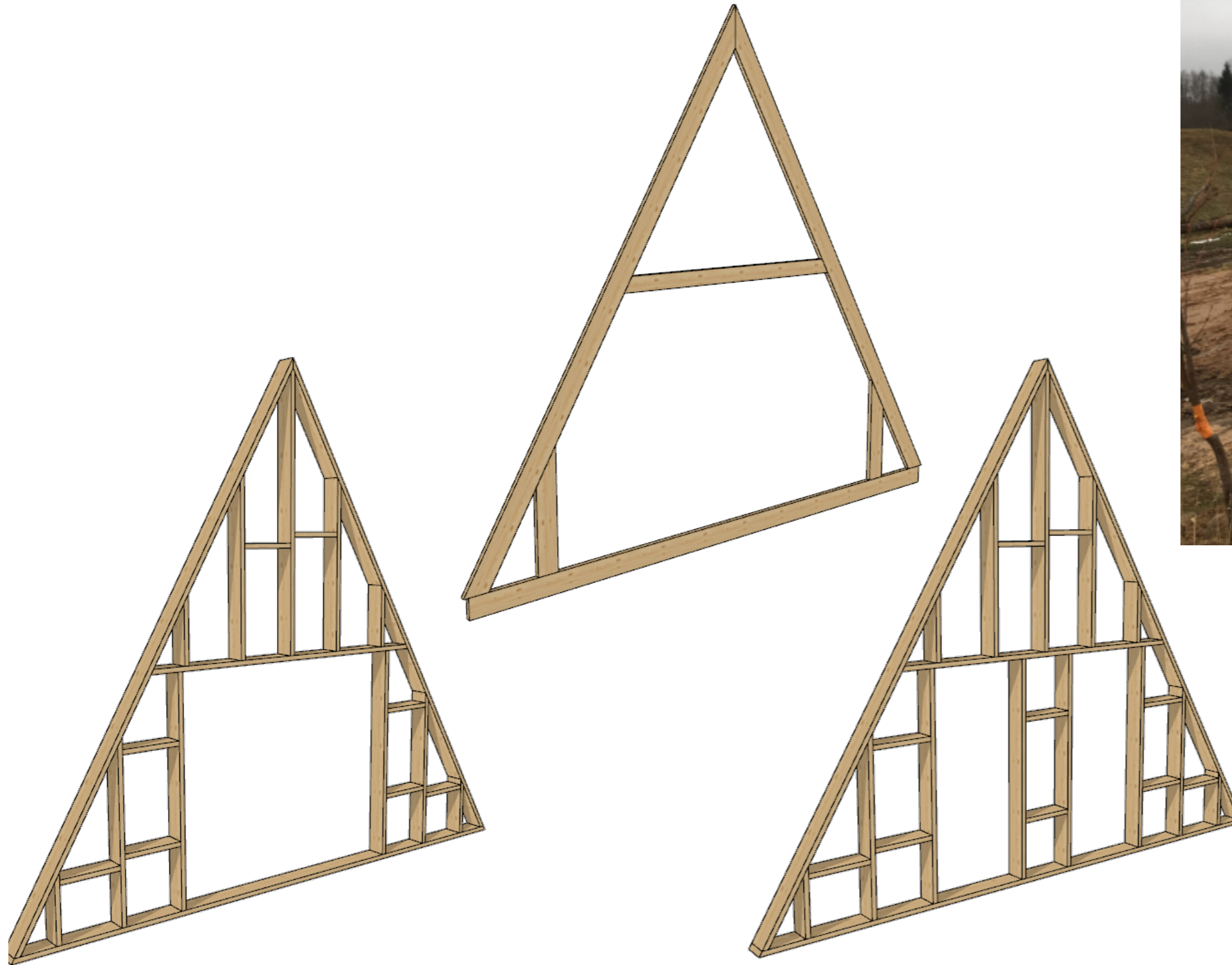


6.Assemble and install lower part of the trusses
Work hours with 2 men crew ca 2h



7. Assemble trusses and gable walls

Work hours with 2 men crew ca 1h per truss

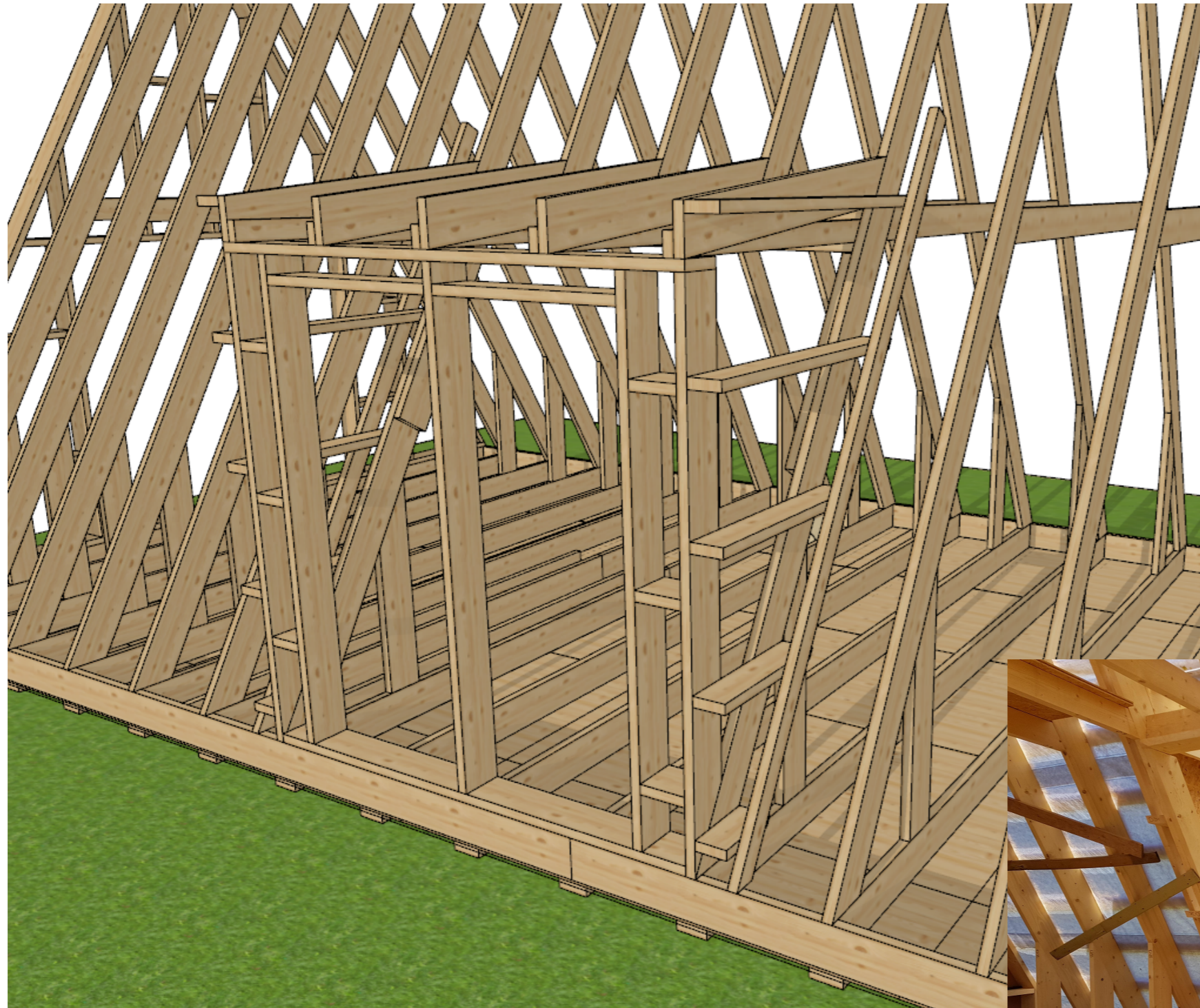


8. Install trusses and gable walls
Work hours with 2 men crew ca 0,5h per truss



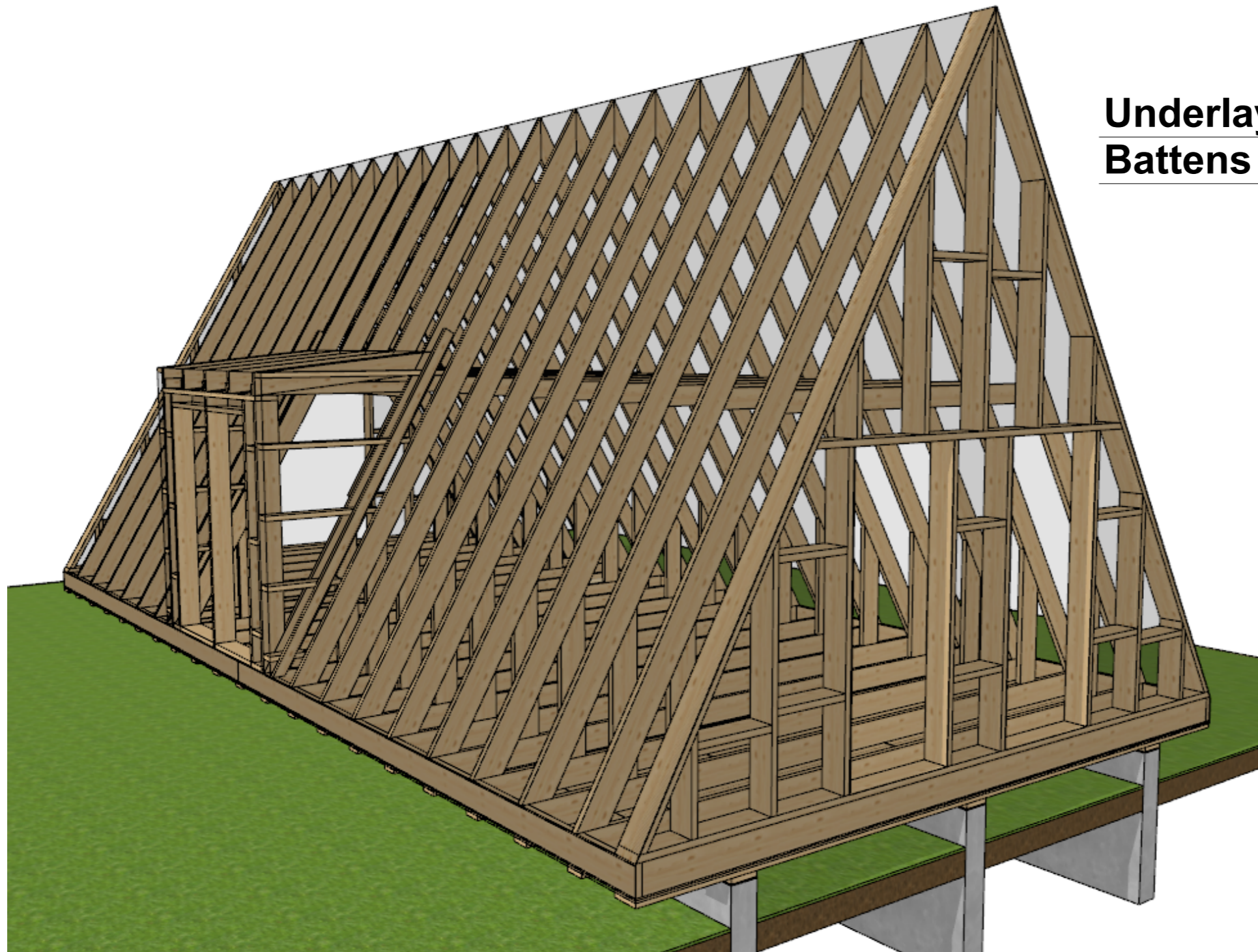
9. Install dormer

Work hours with 2 men crew ca 6h



10. Breathable underlay and vertical battens

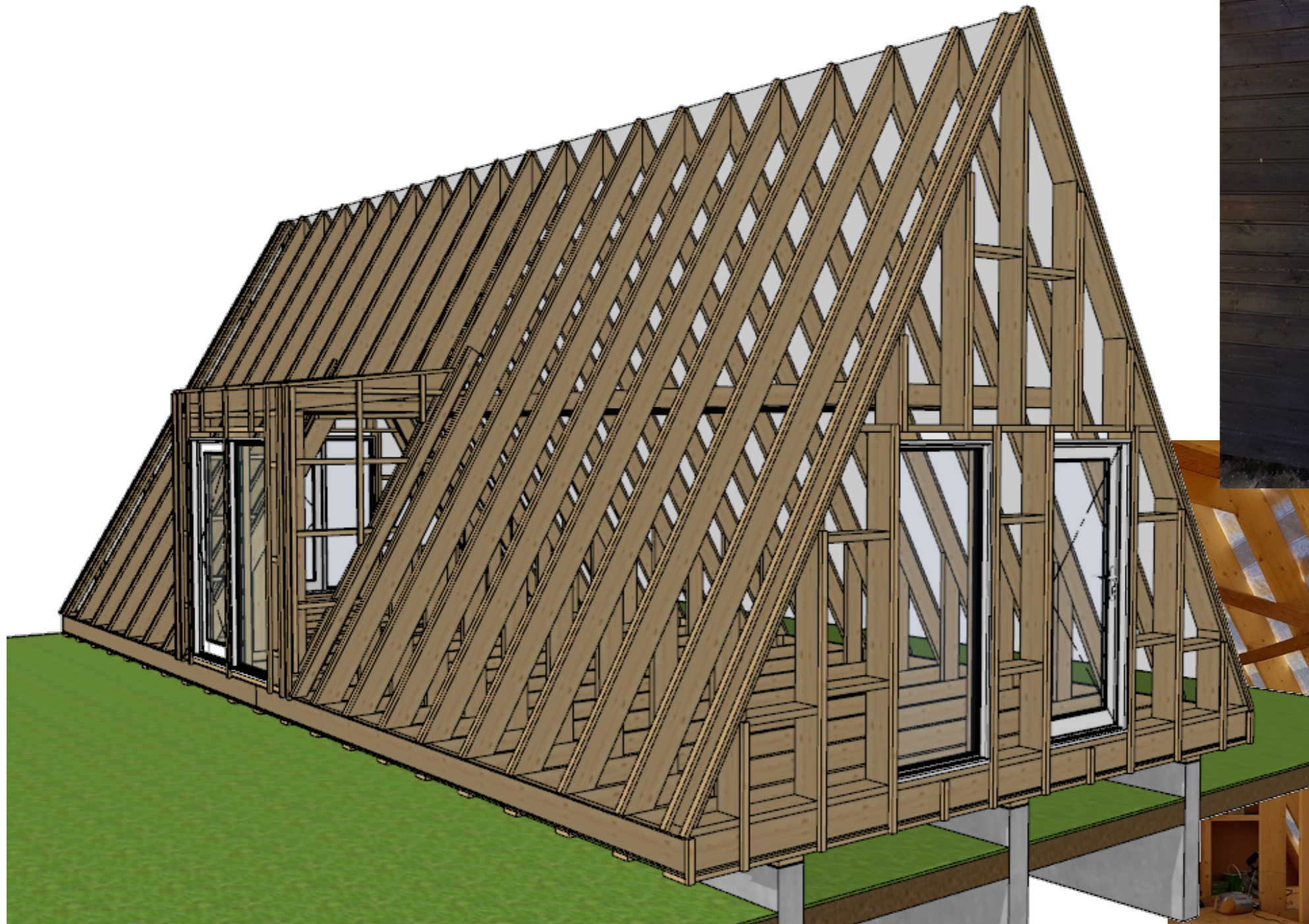
Work hours with 2 men crew ca 8h



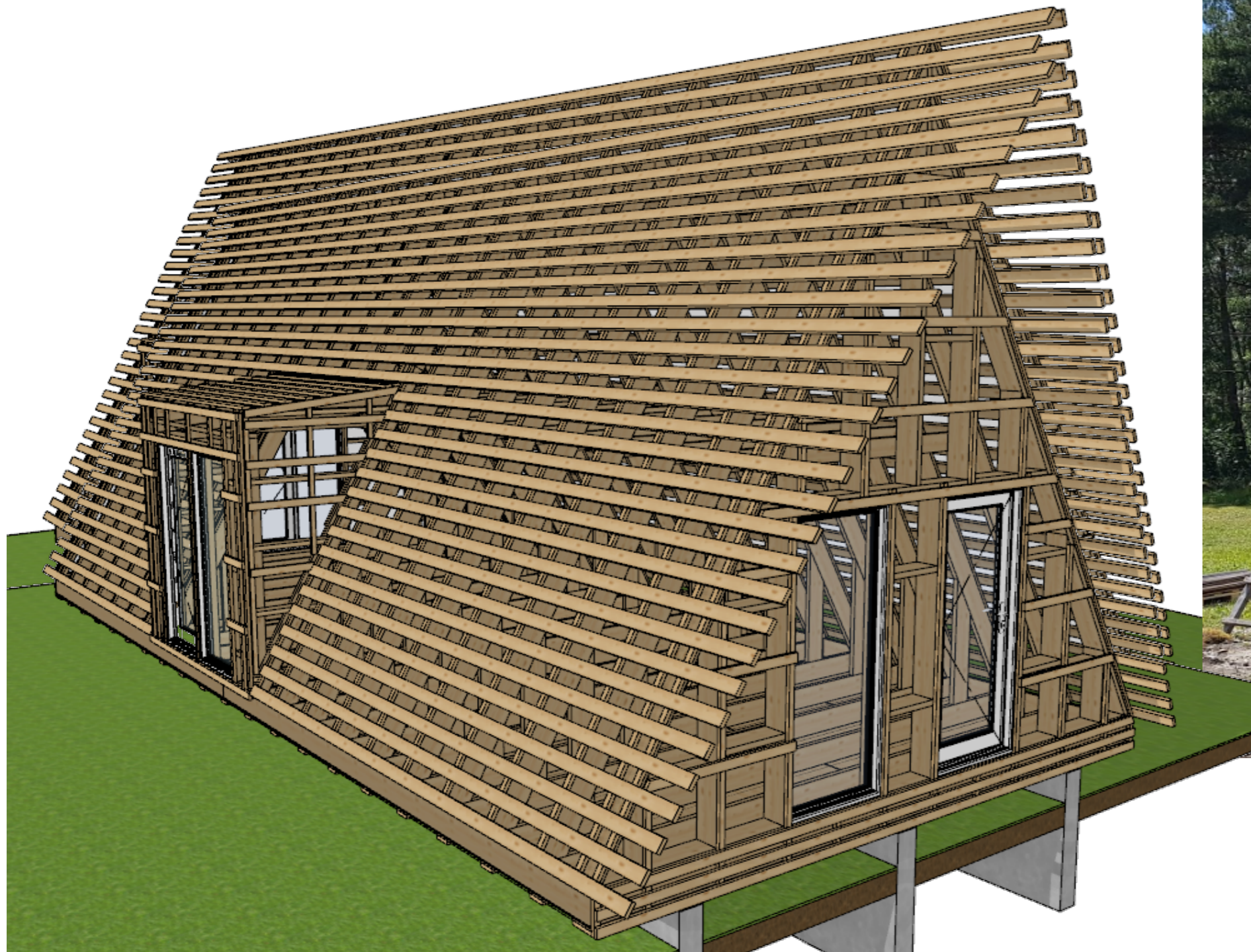
Underlay
Battens



11. Install Doors and Windows
Work hours with 2 men crew ca 8h



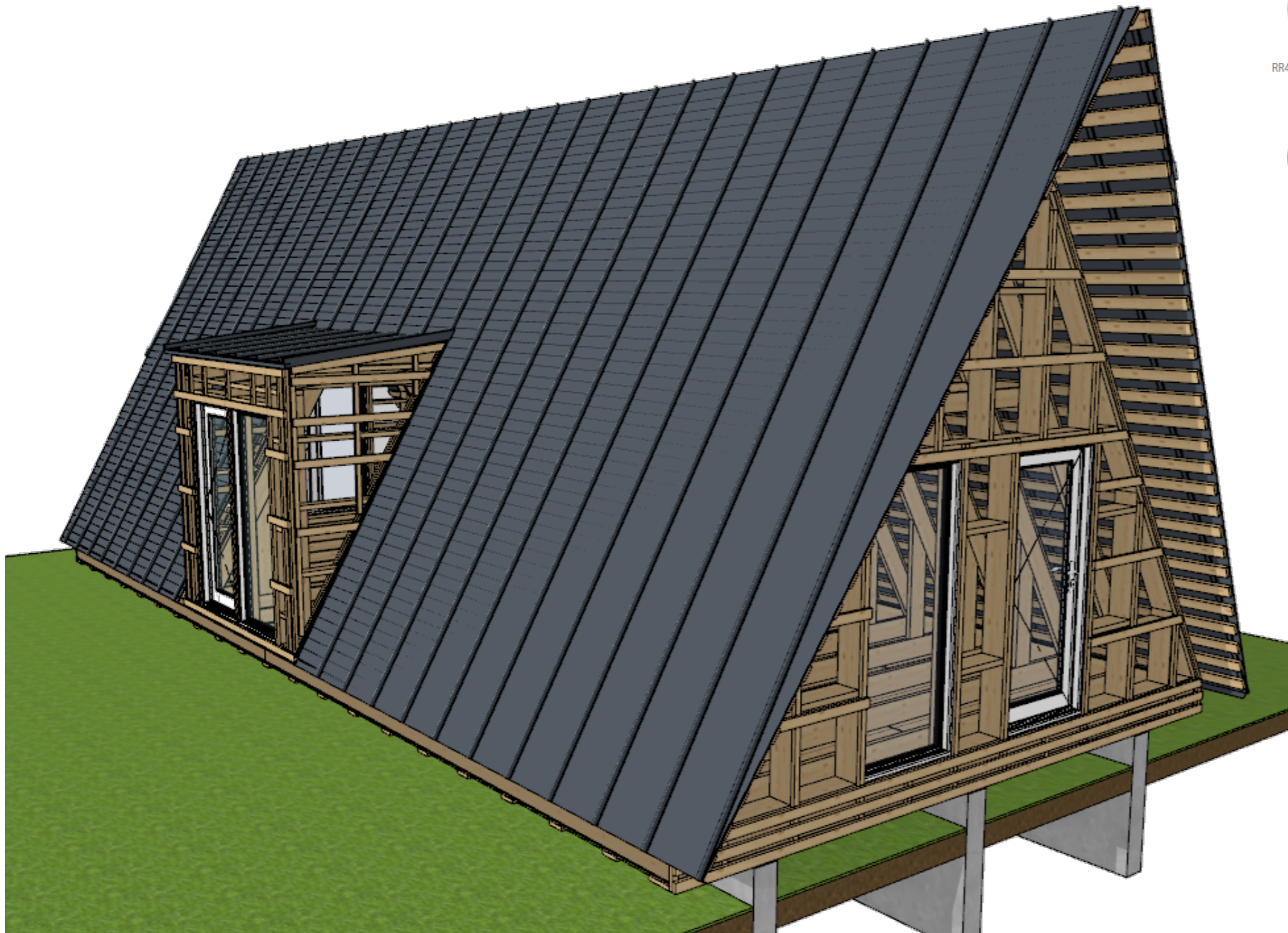
12. Horizontal battens for roofing and cladding Work hours with 2 men crew ca 16h



13. Roofing material

Work hours with 2 men crew ca 24h

Selection of colors (Ruukki Classic C):

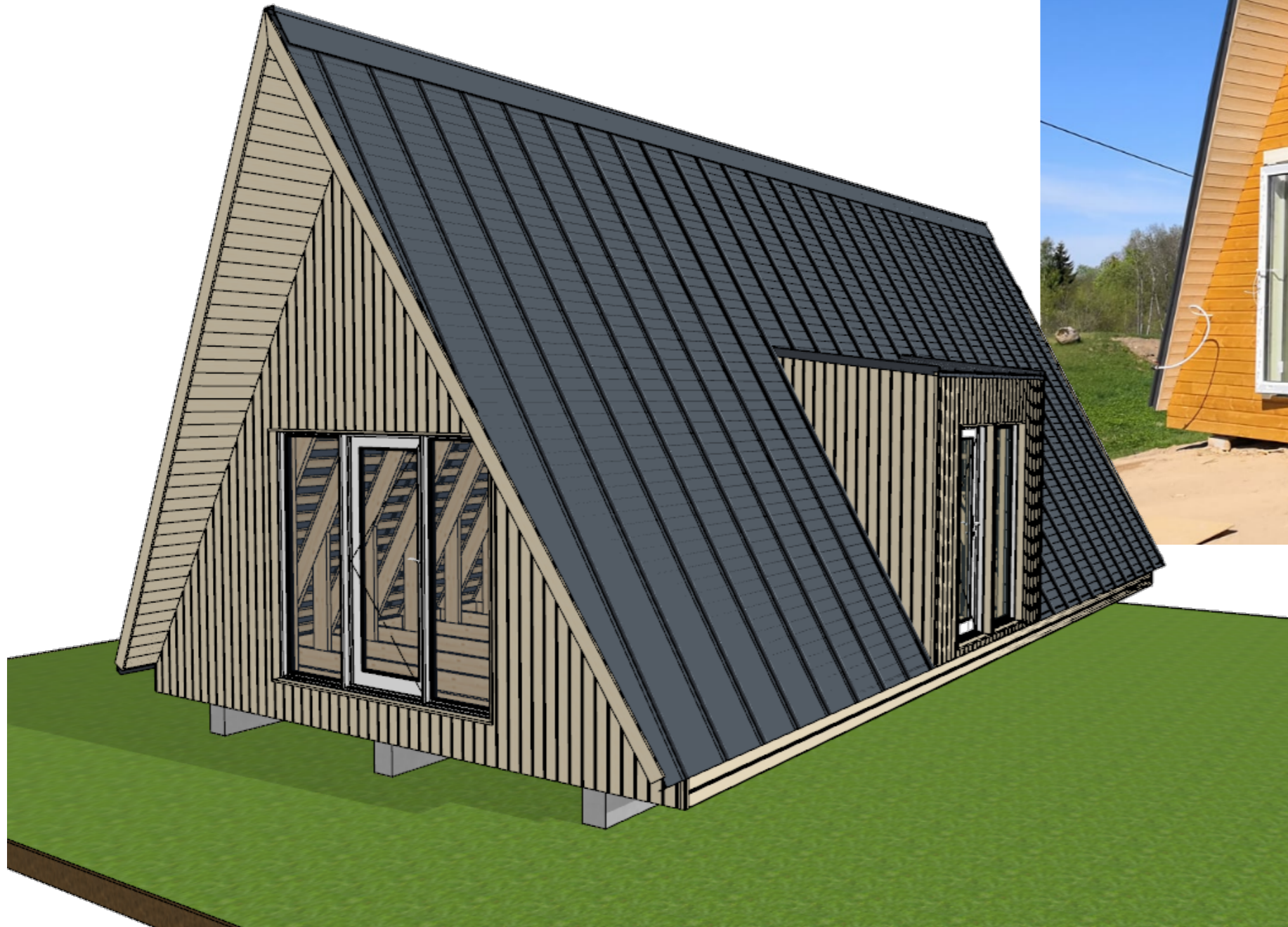


14.Cladding

Work hours with 2 men crew ca 24h



15.Eaves and gable board
Work hours with 2 men crew ca 16h



16. Viking theme decorations
Work hours with 2 men crew ca 6h

