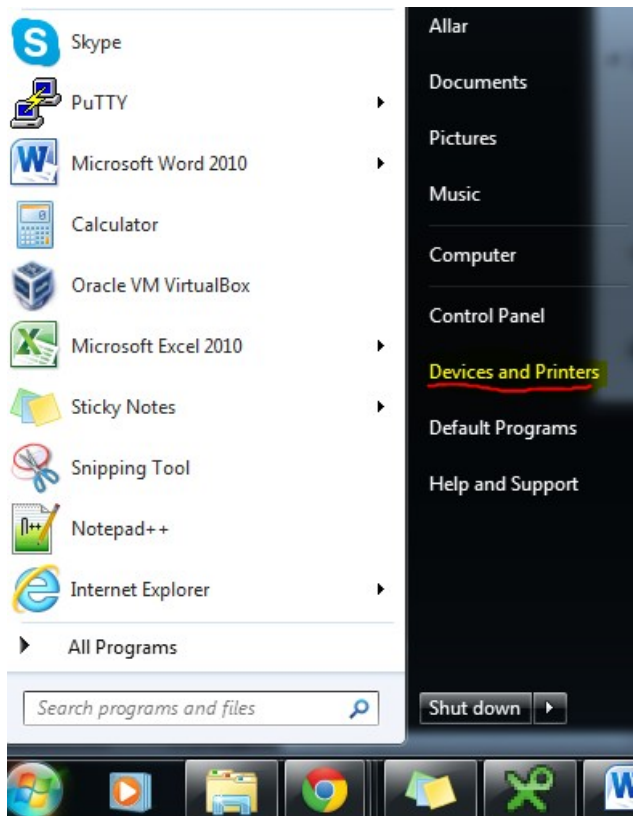
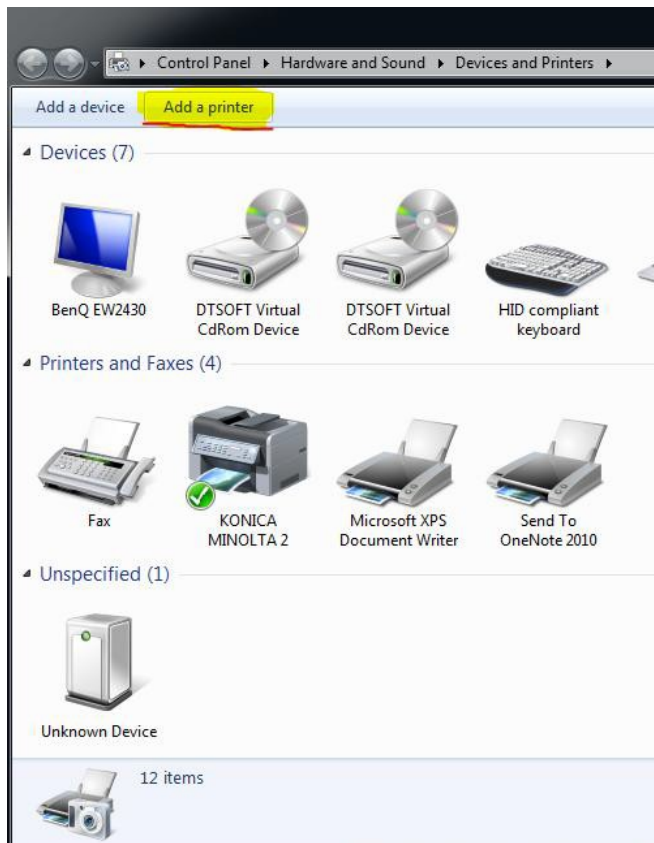


Lisa akadeemia printer enda arvutisse.

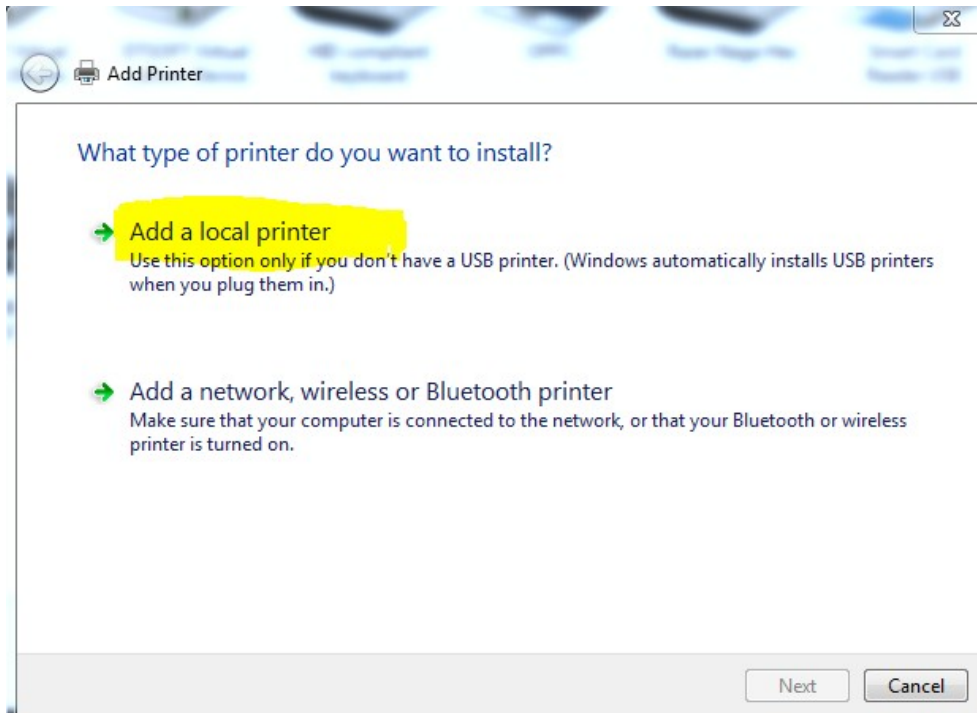
1. Ava start menüü ning sealt klõpsa „*devices and printers*“



2. Uues aknas vali „*Add printer*“.



3. Seejärel vali „**Add a local printer**“ ning vajuta next.



4. Järgnevas aknas vali „**Create a new port**“ ning vali „**Standard TCP/IP Port**“.

Choose a printer port

A printer port is a type of connection that allows your computer to exchange information with a printer.

Use an existing port: LPT1: (Printer Port)

Create a new port:
Type of port: Standard TCP/IP Port

5. Järgnevas aknas kirjuta „**Hostname or IP address**“ reale minolta2 ning vajutada next.

Type a printer hostname or IP address

Device type: TCP/IP Device

Hostname or IP address: minolta2

Port name: minolta_2

Query the printer and automatically select the driver to use

6. „Additional port information required“ lehel vajutada Next.

Additional port information required

The device is not found on the network. Be sure that:

1. The device is turned on.
2. The network is connected.
3. The device is properly configured.
4. The address on the previous page is correct.

If you think the address is not correct, click Back to return to the previous page. Then correct the address and perform another search on the network. If you are sure the address is correct, select the device type below.

Device Type

Standard Custom

Generic Network Card

7. „Driver modeli“ puhul valida KONICA MINOLTA ning Konica minolta 360PS või laadida internetist oma arvutile vastavad driverid:

<http://onyxweb.mykonicaminolta.com/onestopproductsupport/SearchResults?quickSearch=c280>

Install the printer driver



Choose your printer from the list. Click Windows Update to see more models.

To install the driver from an installation CD, click Have Disk.

Manufacturer: Gestetner, HP, infotec, **KONICA MINOLTA**

Printers: **KONICA MINOLTA 360PS(P)**, KONICA MINOLTA 40P PS PPD, KONICA MINOLTA 501/421/361PS(P), KONICA MINOLTA 751/601 PS(P), KONICA MINOLTA C100 PS PPD

This driver is digitally signed. [Tell me why driver signing is important](#)

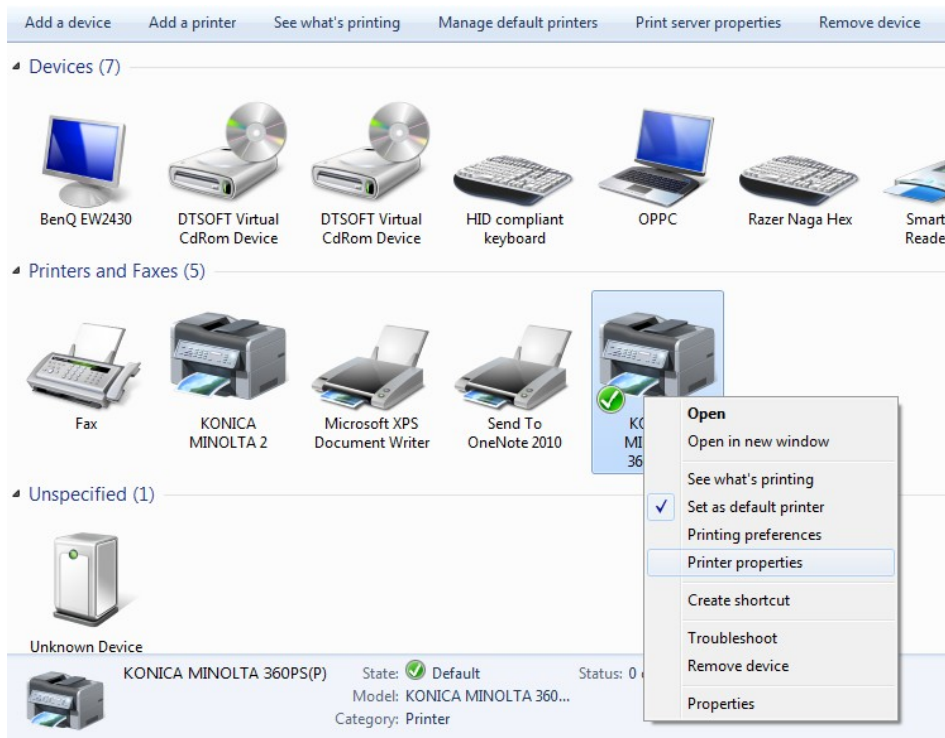
8. Järgneval lehel panna printerile nimi. Sobib igasugune nimi.

Type a printer name

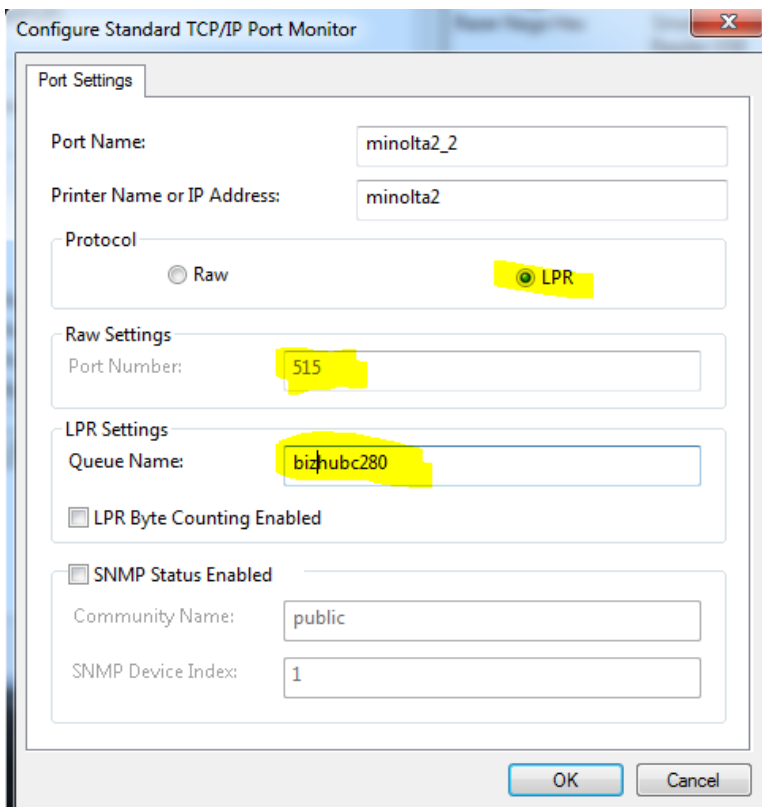
Printer name:

This printer will be installed with the KONICA MINOLTA 360PS(P) driver.

9. Järgnevat akendes vajutada next ning Finish.
10. „**Devices and printers**“ lehel valida seejärel äsja installitud printer ning parema hiireklikiga valida „**Printer properties**“.



11. Järgnevas aknas valida „**Ports**“ ning seejärel „**Configure Port**“ Seejärel kirjutada **Port Number 515, Protocol valida LPR** ning **LPR Settingute** menüüs kirjutada **Queue Name: bizhubc280**



12. Lõpuks tuleks isiklik arvuti siduda printeri kaardiga. Selleks on 2 võimalust:

- Saata proovileht printerisse ning kirjutada it@eava.ee meil sisuga printeri lisamisest ning oma arvuti kasutajanimest. Sellisel juhul registreerib IT-osakond Teie arvuti kasutajanime, misjärel on võimalik printerisse saadetud töid kaardiga kätte saada.
- Teine võimalus oleks seadista eelnevalt oma operatsioonisüsteemi kasutajakonto (*login* name) samale kujule, nagu on arvutiklassi ja Moodle konto (üldjuhul kujul eesnimi.perenimi). Sellisel juhul pole vaja eraldi IT-osakonda kirja saata - võib saata printerisse proovilehe ning testida, kas saab kaardiga printerist töid kätte.