



# **SOFIE - Secure Open Federation for Internet Everywhere**

## **779984**

### **DELIVERABLE D5.1**

#### **Baseline System and Measurements**

---

Project title	SOFIE – Secure Open Federation for Internet Everywhere
Contract Number	H2020-IOT-2017-3 – 779984
Duration	1.1.2018 – 31.12.2020
Date of preparation	19.12.2019
Author(s)	Ioannis Oikonomidis (SYN), Helen C. Lelligou (SYN), Giuseppe Raveduto (ENG), Vincenzo Croce (ENG), Francesco Bellesini (EMOT), Michele Pagliaccia (EMOT), Francesca Santori (ASM), Alessio Cavadenti (ASM), David Mason (ROV), Priit Anton (GT), Dmitrij Lagutin (AALTO), Santeri Paavolainen (AALTO), Tommi Elo (AALTO), Antonis Gonos (OPT), Elias Kanakis (OPT), Antonis Xagoraris (OPT)
Responsible person	Ioannis Oikonomidis (SYN), <a href="mailto:oikonomidis@synelixis.com">oikonomidis@synelixis.com</a>
Target Dissemination Level	Public
Status of the Document	Completed
Version	1.10
Project web-site	<a href="https://www.sofie-iot.eu/">https://www.sofie-iot.eu/</a>

---





<b>Document:</b>	H2020-IOT-2017-3-779984-SOFIE/D5.1 – Baseline System and Measurements						
<b>Security:</b>	Public	<b>Date:</b>	19.12.2019	<b>Status:</b>	Completed	<b>Version:</b>	1.10

## Summary of changes compared to previous version

Version	Major changes
1.10	<p>In the updated version of deliverable 5.1 “Baseline Systems and Measurements”, Section 4 has been improved to indicate how much and what types of data is collected per pilot, the pilot test cases which are planned and the KPIs from the perspective of SOFIE pilots.</p> <p>In addition, some minor changes were made throughout the deliverable’s text to facilitate the coherence of the primary changes listed above.</p>



<b>Document:</b>	H2020-IOT-2017-3-779984-SOFIE/D5.1 – Baseline System and Measurements					
<b>Security:</b>	Public	<b>Date:</b>	19.12.2019	<b>Status:</b>	Completed	<b>Version:</b> 1.10

## Table of Contents

<b>1 Introduction.....</b>	<b>5</b>
1.1 Structure of the Deliverable.....	5
1.2 List of Acronyms.....	5
<b>2 Baseline System .....</b>	<b>7</b>
2.1 Food Supply Chain Pilot (Greece).....	7
2.1.1 Pilot Description.....	7
2.1.2 Technologies .....	8
2.1.2.1 Existing entities.....	8
2.1.2.2 Entities under development.....	12
2.2 Decentralized Energy Data Exchange Pilot (Estonia).....	13
2.2.1 Pilot Description.....	13
2.2.2 Technologies .....	14
2.3 Decentralized Energy Flexibility Marketplace Pilot (Italy) .....	15
2.3.1 Pilot Description.....	15
2.3.2 Technologies .....	16
2.3.2.1 Existing entities.....	16
2.3.2.2 Entities under development.....	19
2.4 Mixed Reality Mobile Gaming Pilot (Finland) .....	20
2.4.1 Pilot Description.....	20
2.4.2 Technologies .....	21
2.4.2.1 Existing entities.....	21
2.4.2.2 Entities under development.....	21
<b>3 Scenarios and Use Cases .....</b>	<b>22</b>
3.1 Food Supply Chain Pilot (Greece).....	23
3.1.1 Pilot Objectives .....	23
3.1.2 Actors.....	23
3.1.3 Scenarios.....	24
3.1.3.1 Food quality history information scenario .....	24
3.1.3.2 Food quality monitoring scenario.....	25
3.1.4 Use Cases .....	26
3.1.4.1 Creation of a QR label containing the product information from field-to-fork... ..	26
3.1.4.2 Check of product description using the QR label.....	27
3.1.4.3 Alert user in case of a product irregularity .....	27
3.1.4.4 Trace back in case of a product irregularity.....	28
3.1.4.5 Smart Irrigation actuation .....	28
3.1.4.6 Ripening level .....	28
3.1.5 User Engagement and Feedback .....	29
3.2 Decentralized Energy Data Exchange Pilot (Estonia) .....	29
3.2.1 Pilot Objectives .....	29
3.2.2 Actors.....	30
3.2.3 Scenarios.....	30
3.2.3.1 SmartMeter access scenario .....	30
3.2.3.2 Data import scenario .....	31
3.2.4 Use Cases .....	31
3.2.4.1 Dispute solution .....	31
3.2.4.2 Flexibility service request .....	32
3.2.5 User Engagement and Feedback .....	32

<b>Document:</b>	H2020-IOT-2017-3-779984-SOFIE/D5.1 – Baseline System and Measurements					
<b>Security:</b>	Public	<b>Date:</b>	19.12.2019	<b>Status:</b>	Completed	<b>Version:</b> 1.10

3.3 Decentralized Energy Flexibility Marketplace Pilot (Italy) .....	33
3.3.1 Pilot Objectives .....	33
3.3.2 Actors.....	33
3.3.3 Scenarios.....	33
3.3.3.1 Pull scenario .....	33
3.3.3.2 Push scenario .....	34
3.3.4 Use Cases .....	34
3.3.4.1 Flexibility request .....	34
3.3.4.2 Pull offer request.....	35
3.3.4.3 Push offer request.....	35
3.3.4.4 Fleet monitoring .....	36
3.3.4.5 Load forecasting .....	36
3.3.4.6 District forecasting.....	37
3.3.5 User Engagement and Feedback .....	37
3.4 Mixed Reality Mobile Gaming Pilot (Finland) .....	37
3.4.1 Pilot Objectives .....	37
3.4.2 Actors.....	38
3.4.3 Scenarios.....	38
3.4.3.1 Collection and Trading scenario.....	38
3.4.3.2 Mini-game scenario.....	38
3.4.3.3 IoT mini-game scenario.....	39
3.4.4 Use Cases .....	39
3.4.4.1 Game content DNA.....	39
3.4.4.2 Game-IoT interaction .....	40
3.4.5 User Engagement and Feedback .....	40
<b>4 Data management, pilot test cases and KPIs .....</b>	<b>41</b>
4.1 Food Supply Chain Pilot (Greece).....	41
4.1.1 Capture Data and Retention .....	41
4.1.1.1 Data to be collected .....	41
4.1.1.2 Data collection methodologies .....	42
4.1.2 Pilot Test Cases.....	43
4.1.3 Pilot KPIs .....	48
4.2 Decentralized Energy Data Exchange Pilot (Estonia) .....	50
4.2.1 Capture Data and Retention .....	50
4.2.1.1 Data to be collected .....	50
4.2.1.2 Data collection methodologies .....	51
4.2.2 Pilot Test Cases.....	51
4.2.3 Pilot KPIs .....	53
4.3 Decentralized Energy Flexibility Marketplace Pilot (Italy) .....	55
4.3.1 Capture Data and Retention .....	55
4.3.1.1 Data to be collected .....	55
4.3.1.2 Data collection methodologies .....	55
4.3.2 Pilot Test Cases.....	55
4.3.3 Pilot KPIs .....	57
4.4 Mixed Reality Mobile Gaming Pilot (Finland) .....	59
4.4.1 Capture Data and Retention .....	59
4.4.1.1 Data to be collected .....	59
4.4.1.2 Data collection methodologies .....	59
4.4.2 Pilot Test Cases.....	59
4.4.3 Pilot KPIs .....	61



<b>Document:</b>	H2020-IOT-2017-3-779984-SOFIE/D5.1 – Baseline System and Measurements						
<b>Security:</b>	Public	<b>Date:</b>	19.12.2019	<b>Status:</b>	Completed	<b>Version:</b>	1.10

# 1 Introduction

The pilots in the SOFIE project are responsible for demonstrating the applicability of SOFIE's reference platform in different real-life use cases. The pilots' aim is to provide an overall evaluation of the SOFIE framework by utilizing the Reference Platform and the Business Platforms that will be developed conforming to the Architecture and Framework specifications.

This deliverable describes the baseline system of each pilot, including a high-level overview, the technologies that are to be used (the ones that already exist as well as those that are under development), the related scenarios and use cases, describing in detail the pre- and post-conditions to be met, the key actors involved, the metrics to be measured and the objective of each scenario as well as a brief overview of the data to be captured and the collection methodology. The captured data is in line with D6.5 Data Management Plan document which includes, among others, Fair Data guidelines and policies.

This deliverable does not include descriptions of any Distributed Ledger Technologies (DLTs) that will be used; their use within each pilot context will be defined and described in the next pilot deliverable along with each pilot overall architecture and components. However, the reader can refer to deliverable D2.1 (State of the Art) for detailed descriptions of all the candidate DLTs that are currently under consideration for the pilots.

The pilot phase will combine the deployment of federated IoT platforms with DLTs which will be able to interact intra-pilot as well as inter-pilot via SOFIE's Business Platforms. SOFIE will demonstrate four pilots from three sectors:

- Food Supply Chain pilot (Greece)
- Decentralized Energy Data Exchange pilot (Estonia)
- Decentralized Energy Flexibility Marketplace pilot (Italy)
- Mixed Reality Mobile Gaming pilot (Finland)

The first outcomes of the pilots will form the content for the next Work Package 5 deliverable D5.2, which will include an Initial Evaluation of the SOFIE framework.

## 1.1 Structure of the Deliverable

Chapter 2 provides high-level descriptions for each pilot. Chapter 3 includes a more thorough description for each pilot, including scenarios and use cases that will be implemented in the pilots. Finally, Chapter 4 gives a brief overview of the data that will be collected during the pilots.

## 1.2 List of Acronyms

BP	Business Platform (for pilots)
DEDE	Decentralized Energy Data Exchange
DEFM	Decentralized Energy Flexibility Marketplace
DLT	Distributed Ledger Technology
DSO	Distribution System Operator
EV	Electric Vehicle
EVSE	Electric Vehicle Supply Equipment
FSC	Food Supply Chain
IoT	Internet of Things
OBD	On-Board Diagnostic
MRMG	Mixed Reality Mobile Gaming



<b>Document:</b>	H2020-IOT-2017-3-779984-SOFIE/D5.1 – Baseline System and Measurements						
<b>Security:</b>	Public	<b>Date:</b>	19.12.2019	<b>Status:</b>	Completed	<b>Version:</b>	1.10

TSO    Transmission System Operator

RP     Reference Platform



<b>Document:</b>	H2020-IOT-2017-3-779984-SOFIE/D5.1 – Baseline System and Measurements					
<b>Security:</b>	Public	<b>Date:</b>	19.12.2019	<b>Status:</b>	Completed	<b>Version:</b> 1.10

## 2 Baseline System

This section presents the four pilots that will be deployed in SOFIE, the description of each pilot setup and the main technology platforms that will be utilized. In addition, we split (where applicable) the Technologies section into two subsections, one where the technologies/platforms that exist already and will be used as is or with small modifications are described, and another where the technologies/components that will be developed for SOFIE are briefly described. The candidate DLT technologies have been identified and thoroughly described in deliverable D2.1 - State Of The Art, so the reader can refer to that deliverable for their detailed description. From those, Ethereum and Guardtime KSI®Blockchain have already been selected to be used in the pilots while Hyperledger Fabric and IOTA have been identified as main candidates and are currently being considered along with other candidates. The main approach in all pilots is to interconnect the federated IoT platforms (each of them utilizing DLT) via a BP that follows the specifications set by SOFIE's architecture and framework that will be defined and described in SOFIE deliverables D2.2 and D2.3.

### 2.1 Food Supply Chain Pilot (Greece)

#### 2.1.1 Pilot Description

This pilot will serve as a proof-of-concept for the validation and demonstration of the capabilities of the SOFIE platform to combine and interconnect, in a secure way, different IoT platforms that are involved in the food chain supply sector. The pilot will consider the field-to-fork route that a specific type of food product follows and will involve the entire IoT infrastructure that is triggered along this path. The path from field to fork can be split into 5 segments:

1. **Table Grapes Field (TGF).** This is a table grape field located in Corinth region, Greece. TGF is where SynField hardware will be deployed to monitor the crop. The deployment will consist of one SynField Head Node which includes, among others, temperature, humidity, wind speed/direction, rainfall, and soil moisture sensors. The data from all these sensors will be transmitted to and stored at the SynField Cloud Server.
2. **Transportation Route A (TRA),** from TGF to the Storage & Distribution Center. This segment includes the path from TGF to SDC. This path will be static and predefined, subject to change only due to unpredictable situations; the total transportation time is typically between 1.5 and 3 hours. It will be traversed by vehicles equipped with GPS tracking sensors as well as temperature sensors. Data from those sensors will be stored at the Transportation IoT platform.
3. **Storage & Distribution Center (SDC).** SDC is located in the Attica region of Greece. This is where the smart boxes with table grapes will be stored until they are transported to the Supermarket. In SDC there will be an extended version of Optimum's Aberon IoT platform deployed, monitoring, among others, temperature and presence of the boxes. The data will be transmitted to and stored at the Aberon Cloud Server.
4. **Transportation Route B (TRB),** from SDC to the Supermarket premises. This segment includes the path from SDC to SM. This path will be static and predefined, subject to change only due to unpredicted situations while the transportation time varies from 30 minutes to 1.5 hours. It will be traversed by vehicles equipped with GPS tracking sensors as well as temperature sensors. Data from those sensors will be stored at the Transportation IoT platform.
5. **Super Market (SM).** SM is the goods' final destination in the pilot's context. SM is located in Attica region of Greece. There are two areas of interest in the supermarket; the area where the boxes are kept until they are placed in the customer area and the customer area where the table grapes are available for the customers. Before the table grapes are removed from the smart boxes to be placed to the customers' area, QR labels will be created (refer also to section 3.1) and applied on the table grape packages so

<b>Document:</b>	H2020-IOT-2017-3-779984-SOFIE/D5.1 – Baseline System and Measurements					
<b>Security:</b>	Public	<b>Date:</b>	19.12.2019	<b>Status:</b>	Completed	<b>Version:</b> 1.10

that supermarket customers can retrieve this information using their smartphones. The actor roles involved in this segment are those of the supermarket employee and the supermarket customer.

Figure 1 provides an overview of the five segments of the Food Supply Chain Pilot:

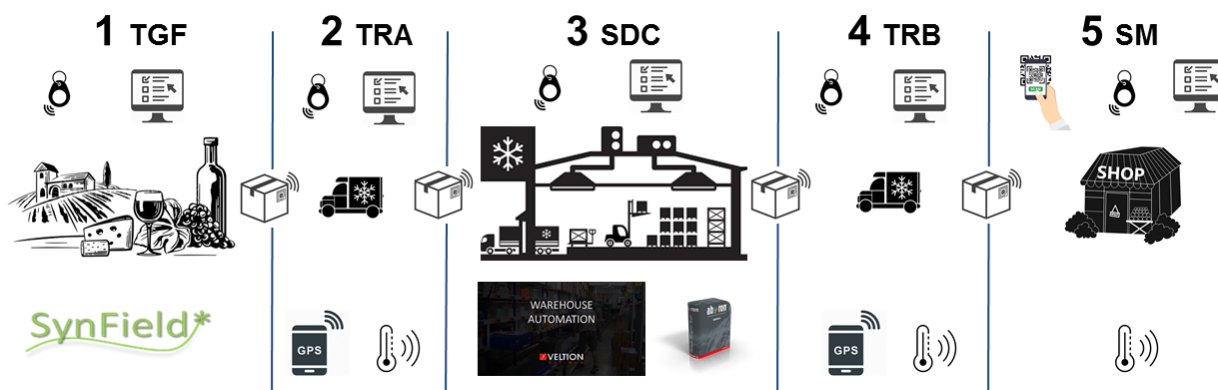


Figure 1: Food Chain Segments

Table grapes will be collected in packages and placed in “smart” boxes which will be equipped with RFID readers. Those boxes will traverse the whole path; therefore, they cannot be regarded as a segment-specific entity but rather as an inter-segment entity. The RFID tags that will be used (cards, keyrings, etc) will have been given to all the actors that need to interact with the boxes. Each tag will be uniquely mapped to an actor (i.e. the id of the tag will be attributed to a specific person) to provide a means of user identification. Data from the RFID readers (tag swipes) will be transmitted to the Transportation IoT platform since it is the IoT platform that will be “present” in all actor interactions that involve boxes.

## 2.1.2 Technologies

### 2.1.2.1 Existing entities

#### SynField Platform

The SynField platform is a cloud-based platform implemented by Synelxis. Given the SynField platform, any user is able to register a field and setup the network of the installed SynField nodes (devices) on it. Synelxis is the manufacturer of two types of nodes: the head node that is the gateway towards the Internet and the peripheral node that is able to communicate only with a head node that belongs to the same network. Figure 2 presents an indicative network of nodes (in the left side) and how these are connected. Typically, each field contains one head node and optionally, one or more peripheral nodes. The head-to-peripheral (and vice-versa) communication is performed using RF technologies while the head node is able to communicate (upload measurements, retrieve configuration and commands) with the SynField platform (REST API) through WIFI or GPRS/3G.



<b>Document:</b>	H2020-IOT-2017-3-779984-SOFIE/D5.1 – Baseline System and Measurements					
<b>Security:</b>	Public	<b>Date:</b>	19.12.2019	<b>Status:</b>	Completed	<b>Version:</b> 1.10

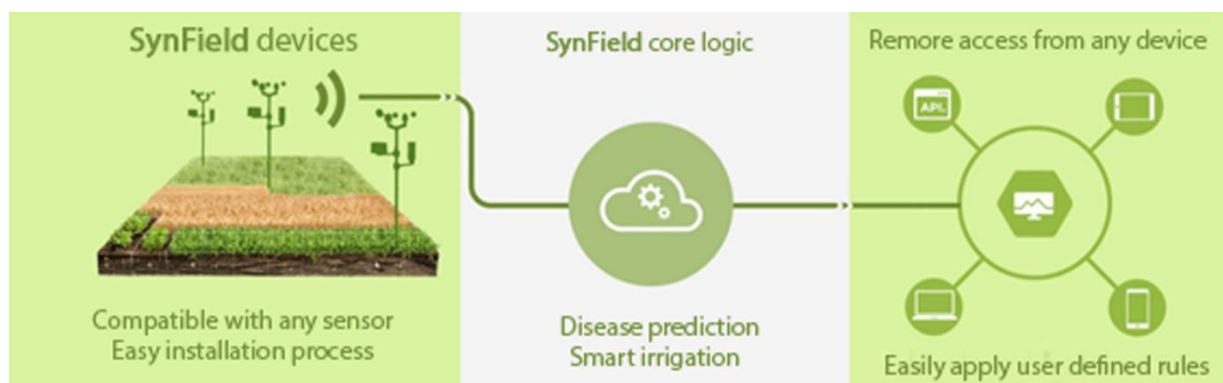


Figure 2: SynField ecosystem

Each node, head or peripheral one, can retrieve measurements from one or more wired installed sensors. The exact number of the sensors that may be installed on each node depends on its type, head versus peripheral, and its hardware version. SynField nodes are compatible with various types of sensors; the only limitation is the interface of the sensors. Currently, ADC, PULSE, I2C and SERIAL sensors are fully supported using RJ connectors. Apart from the sensors, the SynField nodes are compatible with a set of actuators. Also, the SynField cloud platform has been extended so as to support external devices. As external devices we consider those that are not compatible with or not plugged in the SynField nodes.



Figure 3: SynField Head Node (left) and Peripheral Node (right)

As shown in Figure 3, SynField nodes are compact and self-contained. They feature a Photovoltaic panel in order to be autonomous and a Regulated Lead-Acid (Lithium) battery to operate for days even without being charged. Moreover, the electronic circuit is located in a waterproof box (IP-67), which protects the system from rain, snow and hail.

Figure 4 provides a typical SynField installation, where one headnode and multiple peripherals in ad-hoc networking architecture are installed.

<b>Document:</b>	H2020-IOT-2017-3-779984-SOFIE/D5.1 – Baseline System and Measurements					
<b>Security:</b>	Public	<b>Date:</b>	19.12.2019	<b>Status:</b>	Completed	<b>Version:</b> 1.10

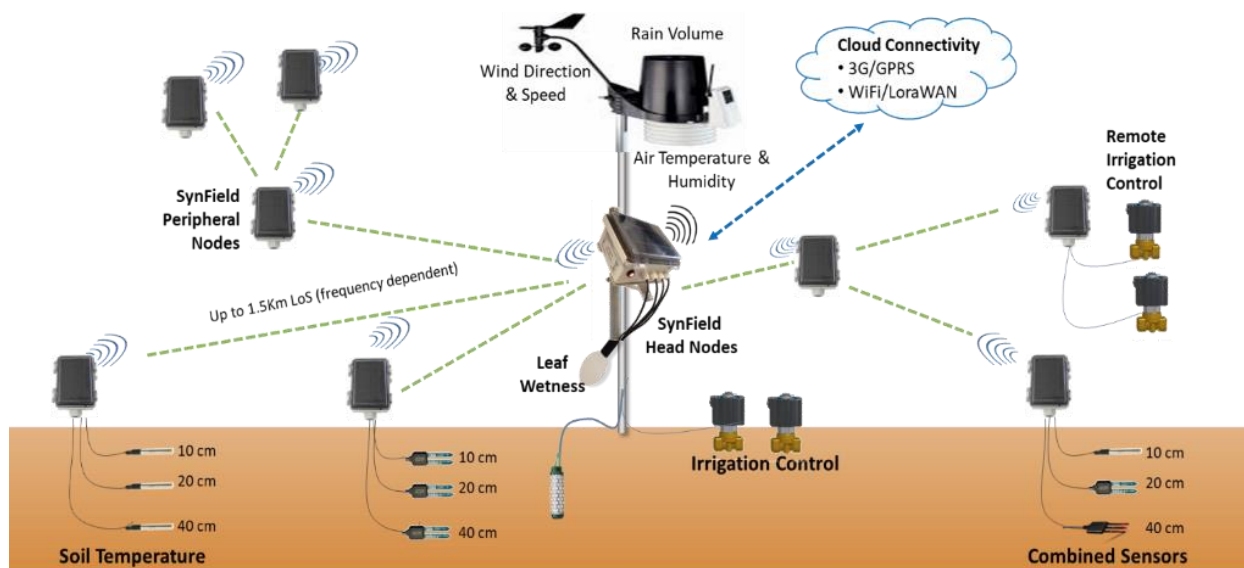


Figure 4: Typical SynField installation

### Aberon Platform

Aberon WMS is a flexible Warehouse Management System, provided by Optimum, and constitutes the core of the solutions provided for managing and optimizing the supply chain. Aberon WMS is friendly, easy-to-use, flexible and modular.

Aberon WMS can utilize a wide range of different equipment and automation techniques, from basic warehouses, in field terminals and fully automated distribution centers.

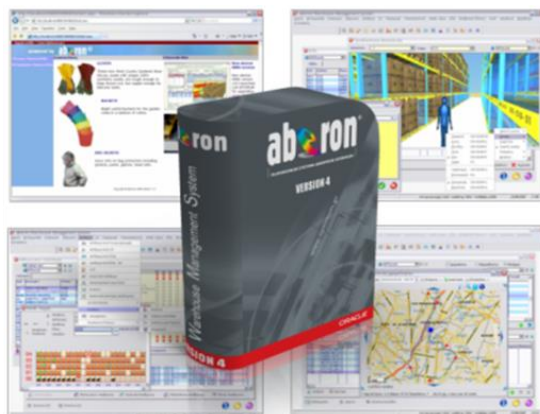


Figure 5: Aberon WMS commercial package

Inbound Management is responsible for identifying, labelling, and receiving incoming materials (final products, semi-finals, raw materials) in the warehouse and for put-away. The inbound management module supports preparation of receipts, barcode labelling of the logistics units, management of pre-receiving ASN (Advanced Shipped Notices), standardization of storage units, as well as cross docking functions.

Aberon WMS uses wireless barcode technology and RFID technology to monitor incoming products or materials in the warehouse.

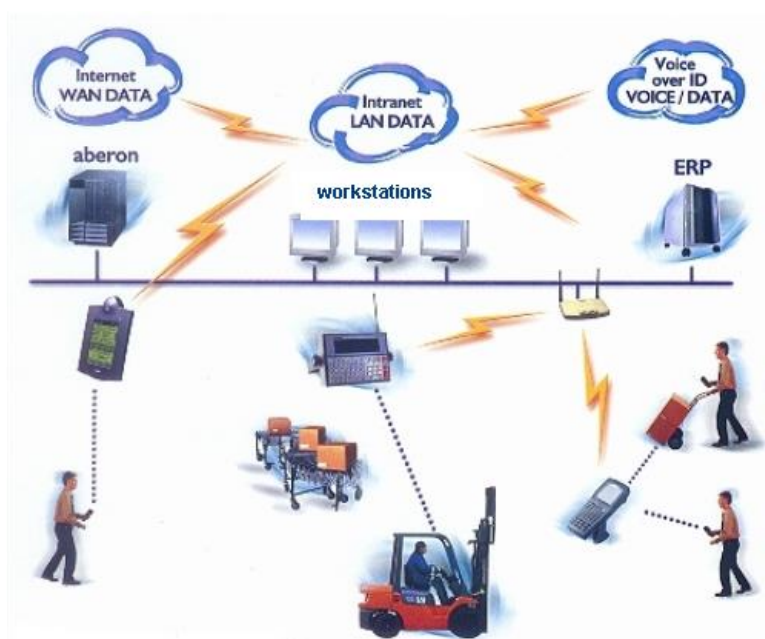
Typically, the attribute identification of consumer goods is achieved by identifying and preparing barcode Labels conforming to the GS1 Standard.

Aberon WMS can also monitor and validate the distinct attributes of SKUs within the warehouse.

<b>Document:</b>	H2020-IOT-2017-3-779984-SOFIE/D5.1 – Baseline System and Measurements					
<b>Security:</b>	Public	<b>Date:</b>	19.12.2019	<b>Status:</b>	Completed	<b>Version:</b> 1.10

The main mission of a Warehouse or a Distribution Centre is to accurately process the orders by making efficient use of the available warehouse resources (employees and equipment). Aberon WMS manages all functions of preparing picking orders, such as order data entry, order processing, inventory blocking, order grouping, load and packaging, and order pre-routing.

A main feature of Aberon WMS is the maintenance of the products' lot tracking (FIFO-FEFO) and the traceability management. The system supports all order picking types and methods, such as picking per order, per customer group, per loading wave, per route, on an aggregate basis, per picking zone, per lot or based on the special designation etc. Order picking via Aberon WMS is made using wireless terminals, RFID terminal, carton labels, coupons, picking lists, pick-by-light, or pick-cart systems and can be integrated with weighing scale devices and other warehouse automation systems.



*Figure 6: Aberon WMS deployment*

Aberon WMS coordinates and optimizes the workload in the warehouse by creating work tasks that are sent in real-time to the wireless terminals of forklifts and pedestrian operators. It allows Distribution Centre officers to monitor the performance rates of the warehouse resources and enables them to draw correct forecasting and reviews of all works.

Aberon WMS allows two-way and real-time communication with external software and hardware systems such as ERP systems, MRP systems, wireless networks, weighing scales, ASRS (Automatic Storage and Retrieving Systems), conveyor belts, sorters, pick-by-light systems, pick-carts etc. Aberon WMS records in detail all tasks and processes, contributing to the detection of errors and the extraction of statistics helping management to make proper decisions.

### Transportation IoT Platform

The transportation IoT platform will be based on the IoT component that SYN developed for the purposes of the InLife H2020 project (<http://www.inlife-h2020.eu/index.php/en/>).

The InLife IoT component aims to deliver a flexible and scalable data and resource management framework guaranteeing consistency, security, and reliability in the development of smart IoT applications. In InLife, the IoT component is implemented as a cloud solution, where the sensing devices expose application-agnostic elementary functionality while the application logic is entirely deployed in the cloud environment. The primary role of the IoT component is to provide

<b>Document:</b>	H2020-IOT-2017-3-779984-SOFIE/D5.1 – Baseline System and Measurements						
<b>Security:</b>	Public	<b>Date:</b>	19.12.2019	<b>Status:</b>	Completed	<b>Version:</b>	1.10

a reliable and scalable cloud-enabled IoT environment to effectively manage data acquired from the physical space and support the implementation of smart IoT applications.

The functional block diagram of the IoT component is shown in Figure 7. As shown in the figure, the IoT component is implemented in a modular way, consisting of three main modules:

- The IoT access API
- The IoT cloud server
- The (local) IoT gateways

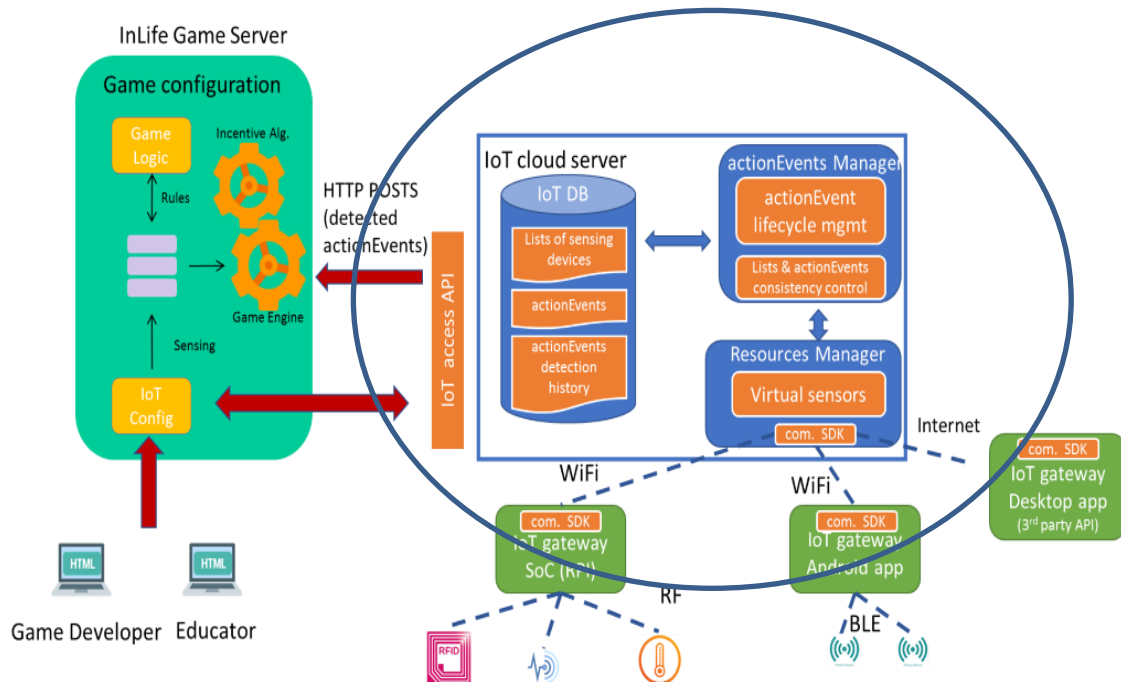


Figure 7: Functional block of the IoT component in the InLife EU H2020 project

#### 2.1.2.2 Entities under development

## DLT-enhanced IoT platforms

The IoT platforms described in the previous subsection do not have DLT capabilities. Therefore, we plan to enhance all the IoT platforms with support for DLTs. Even though the selection of the technologies has not been finalized yet (expected to be finalized during the next two months), the candidates that have so far qualified are Ethereum, Hyperledger Fabric, and Guardtime KSI®Blockchain (the final decision to be made in the next two months). These will keep (meta)data from the original IoT platforms' and make it available through the Data history marketplace.

## Data History Marketplace

This will be the Business Platform (BP) for this pilot, combining data from the IoT platforms involved so as to provide services offering product history and description as well as auditability and traceability services. This platform will allow the various actors of the scenarios of this pilot (described in section 3.1.3) to perform tasks/actions (described in section 3.1) that require interaction with data collected along the path from-field-to-fork.



<b>Document:</b>	H2020-IOT-2017-3-779984-SOFIE/D5.1 – Baseline System and Measurements					
<b>Security:</b>	Public	<b>Date:</b>	19.12.2019	<b>Status:</b>	Completed	<b>Version:</b> 1.10

## 2.2 Decentralized Energy Data Exchange Pilot (Estonia)

### 2.2.1 Pilot Description

This core idea of this pilot is to provide a proof-of-concept for secure data exchange and agreements to data access rights between smart meter infrastructure owners and energy service providers (Intermediaries, distributors, brokers). The pilot will develop and use the capabilities of the SOFIE federated platform for the validation and demonstration of the defined scenarios and use-cases.

Pilot will be based on the Estfeed open software platform for energy consumptions monitoring and management from the customer (consumers/ prosumers) side. It consists of 700 000 smart meters in Estonia. This system is operated by energy company Elering (Transmission system operator in Estonia). There will be data exchange demonstration with two different types of systems: one similar to Elering smart meter platform (Dutch smart meter platform operated by TenneT) and the other smaller system with only a few thousand smart meters in place. The goal is to prove, how different energy grid actors can provide reliable smart meter data feeds based on the consent of smart meter owners.

The concept of data exchange is shown on the Figure 8 where energy market suppliers and distributors can get access to energy consumption from Estfeed platform. During the SOFIE Decentralized Energy Data Exchange pilot there will be a demonstration on:

- how a distributor from another country can access the smart meter data
- how different IoT platform (like Estfeed) can exchange data to Estonian system
- how the small smart meter grid, like local windfarm can provide trusted and verified data to larger systems.

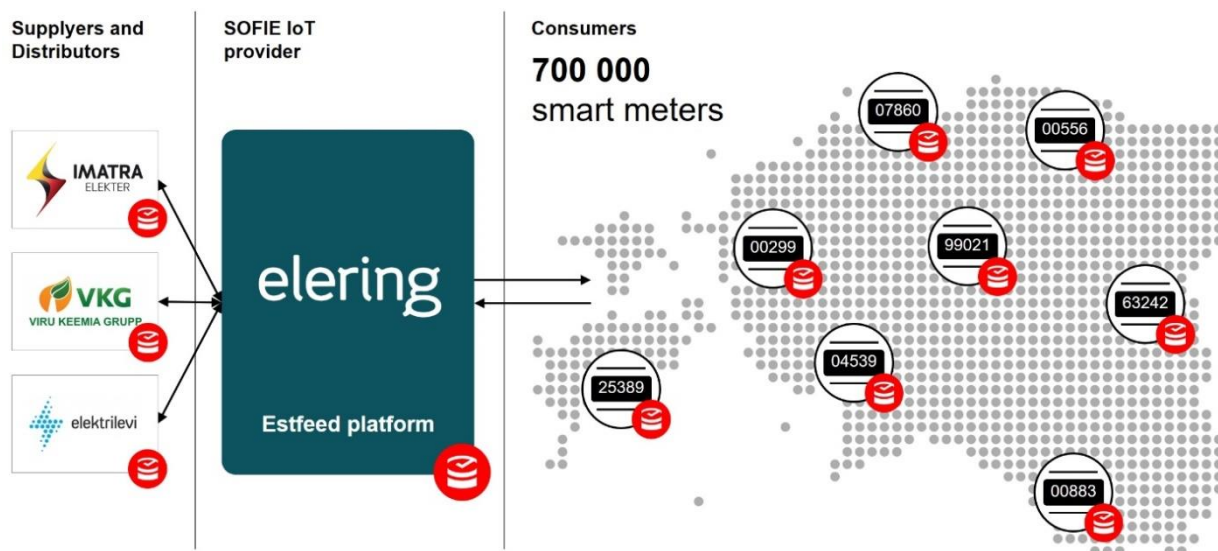


Figure 8: Smart meter data exchange platform

Decentralized Energy Data Exchange pilot goal is to prove how using SOFIE federated platform with blockchain technology can improve the existing energy sector platforms:

- Integrity of energy consumption data and transparency mechanisms.
- Provide trust between energy market participants.
- Protect the entity (Elering, TenneT) who provide access to smart meter data from court cases.
- Provide energy consumption readings which are correct beyond dispute.



<b>Document:</b>	H2020-IOT-2017-3-779984-SOFIE/D5.1 – Baseline System and Measurements						
<b>Security:</b>	Public	<b>Date:</b>	19.12.2019	<b>Status:</b>	Completed	<b>Version:</b>	1.10

- Provide the provenance throughout the infrastructure that energy company is responsible for until delivery is made to 3rd party environment.

Furthermore, the current pilot should investigate and demonstrate opportunities how use of new technology can allow more open access to metering data and therefore enable 3rd parties to develop applications on top of smart meter readings federated platform provided by the SOFIE framework. This could initiate a really distributed energy trading marketplace to build flexible energy services

## 2.2.2 Technologies

### Smart meters

There are two difference data sources regarding the smart meters. Smart grid operators have various types of smart meters in place and during the SOFIE Decentralized Energy Data Exchange pilot there will not be focus on the hardware part of these systems. Platform owners will be responsible for data input from the system.

Another data source is related to small smart meter instances where a chipset RL78/I1B meters will be used. This smart meter setup will demonstrate the full data provenance chain form the smart meter chipset to the agreed parties who exchange the information.

### KSI® Blockchain

One of the core elements used in the pilot is KSI®Blockchain, to provide the integrity of smart meter data, authentication process and agreements between parties.

KSI®Blockchain is a method and a globally distributed network infrastructure for the issuance and verification of KSI signatures.

Unlike traditional digital signature approaches, e.g. Public Key Infrastructure (PKI), that depend on asymmetric key cryptography, KSI uses only hash-function cryptography, all owing verification to rely only on the security of hash-functions and the availability of a public ledger commonly referred to as a blockchain. A blockchain is a distributed public record of events; an append-only record of events where each new event is cryptographically linked to the previous. New entries are created using a distributed consensus protocol.

A user interacts with the KSI system by submitting a hash-value of the data to be signed into the KSI infrastructure and is then returned a signature which provides cryptographic proof of the time of signature, integrity of the signed data, as well as attribution of origin i.e. which entity generated the signature.

A user interacts with the KSI system by submitting a hash-value of the data to be signed into the KSI infrastructure and is then returned a signature which provides cryptographic proof of the time of signature, integrity of the signed data, as well as attribution of origin i.e. which entity generated the signature.

### Elering Estfeed platform

This is an existing platform that serves as a data source for the Decentralized Energy Data Exchange pilot. Estfeed solution connects all smart meter data in Estonia together and through the platform participants can interface with various data sources and these data can be used in the applications desired.

There are various in production technologies used in Estfeed platform like:

- Estonian X-Road Data Exchange Layer operated by The Estonian Information System Authority. More information can be found here: <https://www.ria.ee/en/x-road.html>
- Estfeed Service Payload Formats Y-1028-8 and Estfeed Contract Controller Service. Y-1028-7 developed and owned by Cybernetica AS

<b>Document:</b>	H2020-IOT-2017-3-779984-SOFIE/D5.1 – Baseline System and Measurements					
<b>Security:</b>	Public	<b>Date:</b>	19.12.2019	<b>Status:</b>	Completed	<b>Version:</b> 1.10

- ETSI. ETSI EN 319 412-1 Electronic Signatures and Infrastructures (ESI); Certificate Profiles; Part 1: Overview and common data structures. [http://www.etsi.org/deliver/etsi\\_en/319400\\_319499/31941201/01.01.01\\_60/en\\_319412\\_01v010101p.pdf](http://www.etsi.org/deliver/etsi_en/319400_319499/31941201/01.01.01_60/en_319412_01v010101p.pdf)

More information about the Estfeed platform can be found here: <https://elering.ee/en/smart-grid-development>.

## 2.3 Decentralized Energy Flexibility Marketplace Pilot (Italy)

### 2.3.1 Pilot Description

The real-world energy pilot implemented by ASM and Emotion in the city of Terni aims to demonstrate the capability of creating smart micro-contracts and micro-payments in an energy environment characterized by a large number of distributed renewable energy sources embedded in the medium voltage (MV) and low voltage (LV) distribution networks. One (1) biomass plant, five (5) hydro power generators and 1,234 solar photovoltaic (PV) units are currently connected to ASM's MV and LV distribution networks, reaching the total installed capacity of around 70 MW. In this regard, it is worth pointing out that, based on the energy mix shown in Figure 9, in 2016 370 GWh were delivered to the consumer, 230 GWh drawn from National Transmission Grid (NTG) and 193 GWh produced by Distributed Energy Resources (DER) plants connected to the ASM's power network; the yearly Reverse Power Flow (RPF) measured in the substations reached 25 GWh (Figure 10) and about 40% of the measurements shows that the locally-produced energy overcomes energy drawn from the NTG.

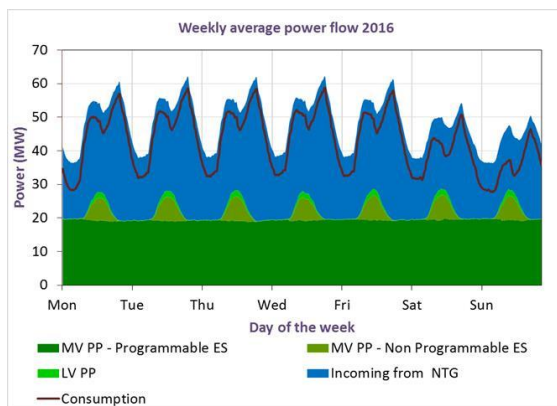


Figure 9: Average weekly profile of consumption and production in the ASM power network

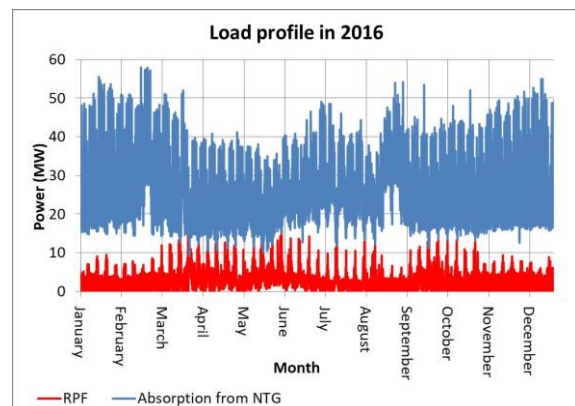


Figure 10: Load profile (2016)

RPF can create instabilities in the system, resulting in overvoltage on the feeder, protection discoordination, increased fault currents and incorrect operation of equipment. Therefore, to avoid the bidirectional power flow, the goal is for local energy consumption to follow the energy production.

Electric mobility, including dynamic and coordinated fleet management, will offer significant benefits in case of coordination of electrical vehicle (EV) charging needs with local green energy availability. In this regard, the Terni pilot will demonstrate in real-world conditions at what extent the SOFIE solutions could help reaching this goal, especially when the production exceeds loads in the ASM's headquarters, by using the EVs of its fleet.

Basically, the SOFIE trial will be run at ASM's headquarters, located in a suburb of the city of Terni. It comprises different production and consumption units such as:

<b>Document:</b>	H2020-IOT-2017-3-779984-SOFIE/D5.1 – Baseline System and Measurements					
<b>Security:</b>	Public	<b>Date:</b>	19.12.2019	<b>Status:</b>	Completed	<b>Version:</b> 1.10

- Two (2) PV arrays (180 kWp and 60 kWp), connected to the LV network
- 72 kW 2<sup>nd</sup> life Li-ion battery energy storage, an innovative unit, able to be charged and discharged depending on the excess of local energy production
- ASM Terni buildings comprising of i) a 4,050 m<sup>2</sup> three-floor office building; ii) a 2,790 m<sup>2</sup> single-floor building consisting of technical offices, a computer center and an operation control center and iii) a 1,350 m<sup>2</sup> warehouse; usually the base load varies between 50 kW and 90 kW and peak load is between 120 kW and 170 kW, depending on seasonal factors.
- Three (3) electric vehicle (EV) charging stations, two (2) fast, delivering 22kW, and one (1) rapid at 52kW power output.

All the aforementioned Units are connected to the secondary substation “ASM” as shown in Figure 11.

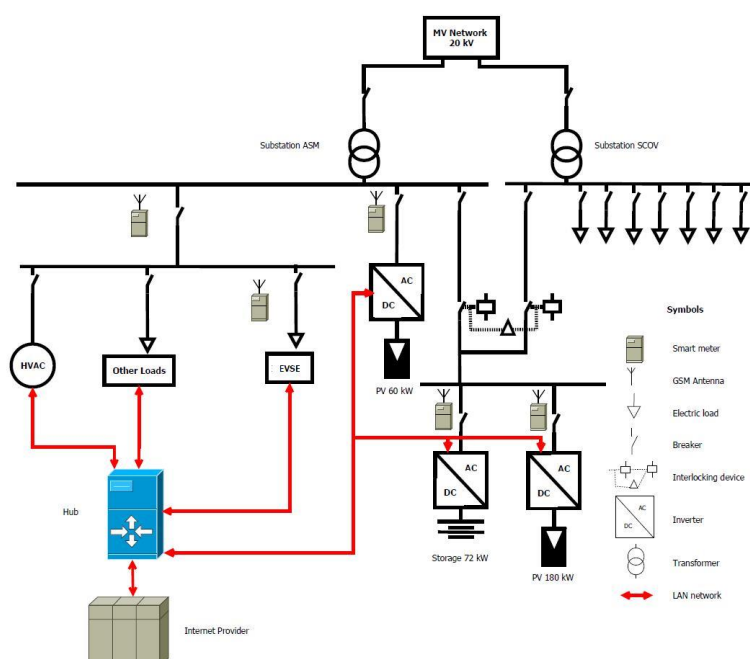


Figure 11: Electricity grid diagram of ASM's headquarters

At ASM's headquarters a fleet of 270 vehicles are used on daily basis for different services (maintenance works, sampling, water or electrical emergencies, etc.). They are managed by the Head of Unit who is responsible for their assignment and for their itineraries.

## 2.3.2 Technologies

### 2.3.2.1 Existing entities

#### Smart meters

The smart meters installed at the Terni pilot site are either 3-phase ZMD meters (Landis+Gyr) or new generation smart meters that are able to get a real time measure and to support real time operations in a Smart Grid. The latter includes a class A power quality analyzer, WALLY A-RTU, manufactured by TeamWare - a 3-phase high-precision analyzer and recorder, power quality, power meter, fault recorder and energy meter).

#### Electric Vehicle Supply Equipment (EVSE)

Two (2) SPOTLINK - EVO smart charging stations able to manage up to 32A (mono-phase / three-phase); thanks to its single-board computer it is even connected to Spotlink e-mobility platform, developed by Emotion, providing energy data in real time and different services like



<b>Document:</b>	H2020-IOT-2017-3-779984-SOFIE/D5.1 – Baseline System and Measurements					
<b>Security:</b>	Public	<b>Date:</b>	19.12.2019	<b>Status:</b>	Completed	<b>Version:</b> 1.10

charger localization, charger state, micro-payment, energy cost management, EV/EVSE charging management, EV/EVSE monitoring management and dynamic demand response as a service (DDRaaS).

One (1) EFAPOWER EV-QC45 charging station which is able to charge all electric vehicles compliant with CHAdeMO charging system and Combined Charging System (CCS) standards. It can charge the actual available electric vehicles from 0% (Zero) to 80% in less than 30 minutes.



Figure 12: Emotion Spotlink EVO Charging Station

### EVSE data communication



**EVSE data: power, voltage, current, energy consumption, out of service, number of sockets in use, current vehicle ID attached.**

Figure 13: EVSE data communication overview

<b>Plug Numbers</b>	1/2
<b>Plug Type</b>	Type 2
<b>Power MAX</b>	25 kW
<b>Voltage</b>	400 V
<b>Frequency</b>	50-60 Hz

<b>Document:</b>	H2020-IOT-2017-3-779984-SOFIE/D5.1 – Baseline System and Measurements					
<b>Security:</b>	Public	<b>Date:</b>	19.12.2019	<b>Status:</b>	Completed	<b>Version:</b> 1.10

<b>Controllable Power</b>	Yes
<b>Monophase/Triphase</b>	Both
<b>Degree of Protection</b>	IP 54
<b>Interlocking</b>	Yes
<b>Display</b>	Touch screen 7"
<b>RFID</b>	Yes
<b>Communication Protocol</b>	OCPP
<b>Reporting</b>	Yes

Figure 14: Spotlink EVO features

### Electric Vehicles (EVs)

Six (6) EVs, each of them equipped with an Emotion On-Board Diagnostic (OBD) device which was developed through a reverse engineering process and designed for real-time reading of the electric vehicle data (Renault ZOE and Nissan LEAF). Data communication from the electric vehicle to the monitoring system of the Emotion partner is achieved through a SIM card that uses the UMTS to send data to the client-server TCP/IP in a Python server at Emotion, which can be accessed remotely to show in real time the state of the vehicle (doors, engine), battery SOC, geolocation and battery charging times.



Figure 15: Emotion customized EV (Renault ZOE)

<b>Document:</b>	H2020-IOT-2017-3-779984-SOFIE/D5.1 – Baseline System and Measurements					
<b>Security:</b>	Public	<b>Date:</b>	19.12.2019	<b>Status:</b>	Completed	<b>Version:</b> 1.10



Figure 16: Prototype of Emotion OBD connected to Renault ZOE

### EV data communication



**EV data: Battery State-of-Charge, residual Autonomy, minutes to Full Charge, Geolocation, Doors Car State, Engine Car State**

Figure 17: EV data communication overview

## 2.3.2.2 Entities under development

### Load and production forecasting software

This software will be used to forecast the need for a flexibility request, based on historical data regarding production, consumption and reverse power flow. This will be used as an input to schedule requests on the flexibility marketplace.

Furthermore, it will be used to forecast the daily EV charging load, in order to know how much the EV fleet recharge could satisfy the Distribution System Operator's (DSO) flexibility need.

### Flexibility Marketplace

This platform will receive flexibility requests by the DSO containing information about required energy in kWh, charging station GPS coordinates, time interval information, incentive



<b>Document:</b>	H2020-IOT-2017-3-779984-SOFIE/D5.1 – Baseline System and Measurements					
<b>Security:</b>	Public	<b>Date:</b>	19.12.2019	<b>Status:</b>	Completed	<b>Version:</b> 1.10

information and offers from the Fleet Owner. Incentives will be provided in the form of token credits. Smart meters data will be stored for auditability and will ensure that the accepted flexibility requests will be fulfilled. The marketplace will be enabled via a blockchain infrastructure.

## 2.4 Mixed Reality Mobile Gaming Pilot (Finland)

### 2.4.1 Pilot Description

The goal of this project is to identify and test use case of SOFIE technologies within the mobile game industry. The Mixed Reality Mobile Gaming pilot in the SOFIE project will instigate proof of concept prototypes to explore the potential of distributed ledger technologies to enable new and scalable gaming experience. The pilot will research and prototype gaming experience via the use of DLTs.

There are several potential use cases of DLT within the gaming including:

<b>IAP Payment - Cryptocurrency</b>	Payments network for mobile games based on blockchain using <b>Cryptocurrency based payment</b> for in-app purchase transactions between player and developer and between players for items or for work in a game.
<b>IAP Payment - Cryptocash</b>	Payments network for mobile games based on blockchain using <b>Cryptocash based payment</b> for in-app purchase transactions between player and developer or between players for items or for work in a game. Based on real-world money and regulated.
<b>App Advertising + User Acquisition</b>	Transparent User Acquisition with consumers in control of what ads they want to see and of their data, with the removal of attribution tracking providers.
<b>Games Features</b>	Players can trade in-game content swapping or buying from other players e.g. weapons, equipment, parts, worlds. This provide means for player ownership and also the potential to enable player content creation.
<b>Location Games using IoT</b>	IoT devices as part of gaming - where a device is used to extend game play into the real-world. Devices could be accessories to the game e.g. weapon or wand, or location based achievements with beacon or digital signage.
<b>Consumer products</b>	Manage scarcity of real world collectables using a blockchain so that the consumer knows that their item is scarce.

The pilot plans to build a core game prototype based on DLT with mini game(s) to leverage the core game and connect to IoT devices via the SOFIE platform.

The pilot is expected to consist of the following (see Figure 18):





<b>Document:</b>	H2020-IOT-2017-3-779984-SOFIE/D5.1 – Baseline System and Measurements					
<b>Security:</b>	Public	<b>Date:</b>	19.12.2019	<b>Status:</b>	Completed	<b>Version:</b> 1.10

**Core Game:** Enables players to collect and trade in-game content swapping or buying from other players (e.g. characters, weapons, equipment, parts) leveraging DLTs to provide player ownership of the asset, an open market for trading transactions, transparency and consistency of asset attributes and transactions. Attributes of the in-game assets would be published on the blockchain.

**Mini Game(s):** Enables extension games (“mini-games”) to be built on top of the assets published on the blockchain. This will enable innovation potentially by other developers and extension of the original core game providing players with increased game depth. These could leverage attributes of the core game assets via the blockchain.

**IoT Mini Game(s):** These extension games would enable IoT games to be built around the core game. These games would leverage IoT devices accessible via the SOFIE platform to provide game experiences, for example using Beacons for a scavenger hunt completing ‘collection’ missions built on the assets from the core game potentially providing a reward in the game or from the locations visited (e.g., a retailer)

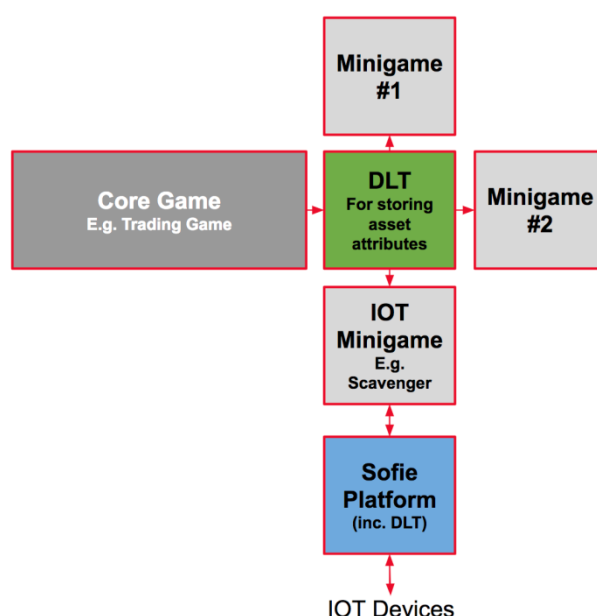


Figure 18: Mixed Reality Mobile Gaming pilot basic component overview

## 2.4.2 Technologies

### 2.4.2.1 Existing entities

Entities that are already available are

- Smartphone game platform (iOS / Android) - mass scale and reach with 2 billion plus smartphone users
- Game development engine (Unity / HTML5), server infrastructure (Rovio's Game Server Template for AWS) and services (analytics, live ops) leveraging Rovio's Beacon platform.

### 2.4.2.2 Entities under development

The principle technical challenge will be to provide scalable DLTs to support cost-effectively millions of active users per day with thousands of transactions per second. Within the pilot scope we also plan to investigate the use of Ethereum potentially leveraging a public or private implementation, and adopt the Proof of Stake of Ethereum.



<b>Document:</b>	H2020-IOT-2017-3-779984-SOFIE/D5.1 – Baseline System and Measurements					
<b>Security:</b>	Public	<b>Date:</b>	19.12.2019	<b>Status:</b>	Completed	<b>Version:</b> 1.10

### 3 Scenarios and Use Cases

In SOFIE, a Scenario is a sequence of steps that describe the interaction between the various IoT platforms and one or more actors. Scenarios will help with visualising the platforms' and actors' interactions. In order to describe the Scenarios in a structured and coherent way, we use the template shown in Table 1, where all the main characteristics/aspects of the scenario are aggregated.

Table 1: Scenario template

SCENARIO	
FIELD	DESCRIPTION
History	Author - Version - Action
Scenario ID	Unique ID
Scenario Name	Representative title for the scenario
Key Actors	Actors involved
Assumptions / Dependencies	Preconditions that must hold
Objective(s)	The objective(s) addressed by the scenario
Description	Story description
Services	Services of the SOFIE platform used to address the needs of the actors
Metrics	Metrics measuring the performance and evaluating whether the objectives are achieved

This section also describes in more detail SOFIE's pilot use cases. A use case defines a goal-oriented set of interactions between a number of actors and SOFIE components. Each use case is initiated by an actor with a particular goal in mind and is considered successfully completed when that goal is satisfied. Again, in order to present the use cases in a structured and coherent way, we use the template shown in Table 2.

Table 2: Use case template

USE CASE	
FIELD	DESCRIPTION
ID	Sequential reference number
Name	Short name of the use case
Actors	The subjects and their means that trigger system reactions
Storyline	Describe in a few sentences the storyline of the "main success scenario" addressed by the use case
Trigger events	The main action that starts the use case execution
Pre-conditions	Those actions that must occur before the execution of the use case in order to obtain the described behaviour
Post-conditions	Those conditions that could occur once the use case has been executed and the system continues its operations
Data	Data involved in the use case. Description, type, access (if applicable, public/private), storage location (if applicable)
Related scenario(s)	Scenario(s) addressing the use case
Priority	Must/Should/Could

It is important to have a consistent terminology, so as to drive the extraction of functional requirements. Therefore, we will use the following form:

[Condition][Subject][Action][Object][Constraint],

where some parts may be optional. For example, the following statement can be translated in a functional requirement:

<b>Document:</b>	H2020-IOT-2017-3-779984-SOFIE/D5.1 – Baseline System and Measurements						
<b>Security:</b>	Public	<b>Date:</b>	19.12.2019	<b>Status:</b>	Completed	<b>Version:</b>	1.10

"When a farmer places a box with fruits in the truck [Condition], the IoT system in place [Subject] issues an "accepted" status [Action] in the distributed ledger used [Object] if the environment temperature is above the predefined threshold [Constraint]"

In addition, prioritization is established utilizing the MoSCow methodology:

1. "Must" - The use case must be supported.
2. "Should" - The use case should be supported as it will create additional benefits.
3. "Could" - Nice-to-have use case but not necessary.

## 3.1 Food Supply Chain Pilot (Greece)

### 3.1.1 Pilot Objectives

The main objective of the Food Supply Chain pilot is to provide consumers, producers, traders, transporters and employees with a way to reliably verify information from the whole supply chain. This main objective can be split into three sub-objectives:

1. To enable consumers to verify, in a reliable way, the product's history, i.e. the farmer from whom the product originates, the quality of the soil and the air in the producer's premises, the weather conditions, transportation distance, the storage conditions, etc.
2. To provide a tamper-proof digital product description, i.e. marking the product with pieces of information that will be used in a digital marketplace, e.g. description, pricing, quantity, photos, etc.
3. To provide a way to trace and audit every transaction so that any irregularities can be addressed. This can be initiated if some incident is reported, such as quality issues. Since the system will be completely transparent, all such issues can be traced back to the responsible party.

### 3.1.2 Actors

The actor roles that will appear in the pilot are:

1. **Producer**, this actor is the responsible person(s) for the TGF segment. He/she is the person who is responsible for growing the products to a consuming-ready state. His/her responsibility and control end when the products are handed over for transportation.
2. **Transporter**, the responsible person(s) for the TRA and TRB segments. This actor is the driver of the transportation vehicle, the person who accompanies the products on their route from one location to another. His/her responsibility and control over the products holds up until the products are handed over to a site's employee.
3. **Warehouse employee**, the responsible person(s) for the SDC segment. This actor has control and responsibility over the product for as long as the products stay stored at the warehouse premises, up to the moment they are handed over to a transporter.
4. **Supermarket employee**, the actor representing the responsible person(s) for the SM segment. This person receives the boxes from the transporter and is responsible for creating the QR labels for each package, as well as storing and placing the packages while at the supermarket premises. For the purposes of the pilot, this actor also has the responsibility to trace back a product quality issue when reported by a supermarket customer. However, in reality we expect that different people/organizations would be responsible for that.
5. **Supermarket customer**, the candidate consumer(s) of the product. This role represents the customers that enter the supermarket interested in buying the stored products. The customers have no responsibility or control over the products.



<b>Document:</b>	H2020-IOT-2017-3-779984-SOFIE/D5.1 – Baseline System and Measurements					
<b>Security:</b>	Public	<b>Date:</b>	19.12.2019	<b>Status:</b>	Completed	<b>Version:</b> 1.10

### 3.1.3 Scenarios

In this section we describe the various scenarios that will take place during the Food Supply Chain pilot. In different places we mention “web application” which will be either a Graphical User Interface (GUI) provided to all the IoT platforms as a part of the Business Platform (BP) or an IoT platform specific GUI displaying information retrieved by the BP. In the following scenarios most of the participants are asked to swipe their RFID tags whenever they receive an item. This action replaces the previous way of handing over responsibility of an item by signing on a paper. We are fully aware that doing so for every item is not a scalable solution; however we opted for this solution in order to be more in control of the actions of the participants for the pilot phase. For the commercial exploitation of the food supply chain, a more automated way for responsibility hand-over should be designed, probably by introducing a more automated (and more capital intensive) RFID tagging system.

#### 3.1.3.1 Food quality history information scenario

SCENARIO	
FIELD	DESCRIPTION
<b>History</b>	Yannis Oikonomidis, Antonis Gonos, - v0.1 - First scenario description
<b>Scenario ID</b>	FoodChain_Scenario_1
<b>Scenario Name</b>	Food Quality monitoring scenario
<b>Key Actors</b>	Producer, transporter A, warehouse employee, transporter B, supermarket employee, supermarket customer
<b>Assumptions / Dependencies</b>	<p>SOFIE platform is installed and running.</p> <p>IoT platforms are installed and running including</p> <ul style="list-style-type: none"> <li>• SynField field nodes and Cloud platform</li> <li>• Transportation platform with smart boxes equipped with RFID readers, vehicles with temperature, GPS, and other sensors</li> <li>• Aberon platform</li> </ul> <p>All key actors, except for the supermarket customer, have RFID tags.</p>
<b>Objective(s)</b>	Monitor and ensure food quality and change of responsibility along the whole supply chain from the field to the fork
<b>Description</b>	<p>The producer owns a field where she grows table grapes. In this field there is a SynField deployment which helps her with monitoring and controlling her crop's quality. SynField field nodes collect and transmit temperature data to SynField cloud component. The sensor data provided by the SynField nodes triggers logic embedded in the SynField cloud platform that actuates a deployed smart irrigation system on the field (<b>FCP_UC5</b>).</p> <p>The producer has an agreement to sell her goods to a specific supermarket brand. The agreement dictates that when the producer collects the grapes from the field, she has to swipe her RFID tag every time she fills a “smart” box (boxes equipped with RFID readers) with grapes.</p> <p>When her goods are ready to be transported, she arranges for a transportation vehicle to arrive at her field where she will, with the assistance of transporter A, load the boxes into the vehicle. At this point, transporter A, whose transportation company has also an agreement with the supermarket, has to swipe his tag on every box that he loads on his vehicle. The transportation vehicle is equipped with temperature and GPS sensors which collect and transmit data to the Transportation IoT platform while the vehicle is on the move. Transporter A drives the vehicle to the Storage &amp; Distribution Centre where the Aberon platform is deployed monitoring arriving packages.</p> <p>The boxes are received by the warehouse employee who also has to swipe his RFID tag at every smart box he unloads from the vehicle. The warehouse employee, according to the ripening level of the contents of each package, places the packages at the correct spot within the storage facility. While the boxes stay at the storage center, information regarding temperature as well as location and storage duration is collected.</p>





<b>Document:</b>	H2020-IOT-2017-3-779984-SOFIE/D5.1 – Baseline System and Measurements					
<b>Security:</b>	Public	<b>Date:</b>	19.12.2019	<b>Status:</b>	Completed	<b>Version:</b> 1.10

	<p>Boxes are collected from the storage center by a transportation vehicle which is driven by transporter B. Transporter B swipes her tag at every box she loads into the vehicle. The boxes arrive at the supermarket where supermarket employees unload them from the vehicle and swipe their RFID tags at the boxes. They connect to a web application and through a user friendly GUI they create QR labels that contain all the information (from both box and field) collected from the field to the supermarket (<b>FCP_UC1</b>). The grape packages are then marked with those QR labels and they are placed by the supermarket employees at the appropriate spot inside the customer area. Box information during the transportation from the field to fork are continuously and automatically being checked, so that in case of a wrong state (e.g. bad temperature value) notifications are sent to the appropriate Cloud platform.</p> <p>A supermarket customer scans the QR labels with his smartphone while passing by those spots to see and evaluate the temperature history, the storage duration, the origin producer location, etc. of the products inside the box, having in that way a reliable means of deciding upon purchasing and consuming the product (<b>FCP_UC2</b>).</p>
<b>Services</b>	SOFIE communication services between various blockchain enhanced IoT platforms
<b>Metrics</b>	Check whether the products' complete information can be securely stored, retrieved, and presented

### 3.1.3.2 Food quality monitoring scenario

SCENARIO	
FIELD	DESCRIPTION
<b>History</b>	Yannis Oikonomidis, Antonis Gonos - v0.1 - First alert scenario description
<b>Scenario ID</b>	FoodChain_Scenario_2
<b>Scenario Name</b>	Food Quality alert scenario
<b>Key Actors</b>	Producer, transporter A, warehouse employee, transporter B, supermarket employee, supermarket customer
<b>Assumptions / Dependencies</b>	<p>SOFIE platform is installed and running.</p> <p>IoT platforms are installed and running including</p> <ul style="list-style-type: none"> <li>• SynField field nodes and Cloud platform</li> <li>• Transportation platform with smart boxes equipped with RFID readers, vehicles with temperature, GPS, and other sensors</li> <li>• Aberon platform</li> </ul> <p>All key actors, except for the supermarket customer, have RFID tags.</p>
<b>Objective(s)</b>	Create alert in case of food quality irregularity and trace back to the source of this issue along the whole supply chain from the field to the fork
<b>Description</b>	<p>The producer owns a field where she grows table grapes. In this field there is a SynField deployment which helps her with monitoring and controlling her crop's quality. SynField field nodes collect and transmit temperature data to the SynField cloud component.</p> <p>The producer has an agreement to sell her goods to a specific supermarket brand. The agreement dictates that when the producer collects the grapes from the field, she has to swipe her RFID tag every time she fills a "smart" box (boxes equipped with RFID readers) with grapes.</p> <p>When her goods are ready to be transported, she arranges for a transportation vehicle to arrive at her field where she will, with the assistance of transporter A, load the boxes into the vehicle. At this point, transporter A, whose transportation company has also an agreement with the supermarket, has to swipe his tag on every box that he loads on his vehicle. The transportation vehicle is equipped with temperature and GPS sensors which collect and transmit data to the Transportation IoT platform while the vehicle is on the move. Transporter A drives the vehicle to the Storage &amp; Distribution Centre where Aberon platform is deployed monitoring arriving packages.</p>



<b>Document:</b>	H2020-IOT-2017-3-779984-SOFIE/D5.1 – Baseline System and Measurements					
<b>Security:</b>	Public	<b>Date:</b>	19.12.2019	<b>Status:</b>	Completed	<b>Version:</b> 1.10

	<p>The boxes are received by the warehouse employee who also has to swipe his RFID tag at every smart box he unloads from the vehicle. While the boxes stay at the storage center, information regarding temperature as well as location and storage duration is collected.</p> <p>Boxes are collected from the storage center by a transportation vehicle which is driven by transporter B. Transporter B swipes her tag at every box she loads into the vehicle. The boxes arrive at the supermarket where supermarket employees unload them from the vehicle and swipe their RFID tags at the boxes. They connect to a web application and through a user friendly GUI they create QR labels that contain all the information (from both box and field) collected from the field to the supermarket. The grape packages are then marked with those QR labels and they are placed by the supermarket employees at the appropriate spot inside the customer area. Box information during the transportation from the field to fork are continuously and automatically being checked, so that in case of a wrong state (e.g. bad temperature value) notifications are sent to the appropriate Cloud platform. While being at the distribution storage center, the temperature rose above the desired level for more than a predefined time period. Consequently, an alert was generated and sent to the monitoring application (<b>FCP_UC3</b>). The warehouse employee did not notice the alert, as the temperature dropped again to the desired levels; hence the package continued its path.</p> <p>A supermarket customer scanned the QR label of the package, noticed the temperature issue and reported it to a supermarket employee. The various parties involved in the food supply chain, as well as legal authorities, trace back the issue and verify the source and the responsible entity (<b>FCP_UC4</b>).</p>
<b>Services</b>	SOFIE communication services between various blockchain enhanced IoT platforms
<b>Metrics</b>	Check whether, in a case of a product quality irregularity, the issue is successfully reported and the source of the problem can be traced back.

### 3.1.4 Use Cases

In this section we describe the various use cases that can be extracted from the scenarios described in 3.1.3. In different places we mention “web application” which will be either a Graphical User Interface (GUI) provided to all the IoT platforms as a part of the BP or a IoT platform specific GUI displaying information retrieved by the BP.

#### 3.1.4.1 Creation of a QR label containing the product information from field-to-fork

USE CASE	
FIELD	DESCRIPTION
<b>ID</b>	FCP_UC1
<b>Name</b>	QR label creation
<b>Actors</b>	Supermarket employee
<b>Storyline</b>	When the supermarket employee needs to remove the table grape packages from the smart box and place them at the customer area, he/she logs in to a web application that creates a QR label with all the relevant information that was collected from the whole route from the field to the supermarket
<b>Trigger events</b>	Supermarket employee logs in to the web application
<b>Pre-conditions</b>	Table grape data (temperature, presence, GPS, etc.) are collected and made available to the IoT platforms
<b>Post-conditions</b>	QR label is generated and made available for downloading and printing
<b>Data</b>	User data (username, password, employee id, etc.), stored at the web application database that is used by the supermarket employees. This data will be used to provide the supermarket employee access to the web application. Product data (sensor data, other product information), stored at the various IoT platforms along



<b>Document:</b>	H2020-IOT-2017-3-779984-SOFIE/D5.1 – Baseline System and Measurements					
<b>Security:</b>	Public	<b>Date:</b>	19.12.2019	<b>Status:</b>	Completed	<b>Version:</b> 1.10

	the supply chain path, that will be retrieved to create the QR label. All data will be private.
<b>Related scenario(s)</b>	FoodChain_Scenario_1
<b>Priority</b>	Must

#### 3.1.4.2 Check of product description using the QR label

USE CASE	
FIELD	DESCRIPTION
<b>ID</b>	FCP_UC2
<b>Name</b>	Product description using QR label
<b>Actors</b>	Supermarket customer
<b>Storyline</b>	When a supermarket customer wants to get information about a table grape package, he/she scans the QR label attached to the package and all the available information is displayed on his/her smartphone screen.
<b>Trigger events</b>	Supermarket customer scans a package's QR label
<b>Pre-conditions</b>	Table grape data (temperature, presence, GPS, etc.) are collected and available in the IoT platforms. Supermarket customer has installed the application in his smartphone. A QR label has been created and attached to the package.
<b>Post-conditions</b>	Table grape package history information is displayed on the supermarket customer's screen
<b>Data</b>	Product data (sensor data, other product information), stored at the various IoT platforms along the supply chain path, that will be used to create the QR label. Data will be publicly available to the supermarket customers through the QR labels.
<b>Related scenario(s)</b>	FoodChain_Scenario_1, FoodChain_Scenario_2
<b>Priority</b>	Must

#### 3.1.4.3 Alert user in case of a product irregularity

USE CASE	
FIELD	DESCRIPTION
<b>ID</b>	FCP_UC3
<b>Name</b>	Alert mechanism
<b>Actors</b>	Warehouse employee
<b>Storyline</b>	When the product's temperature rises above an acceptable level for more than a predefined time period, an alert is generated and sent to the web application
<b>Trigger events</b>	A product's temperature rises above an acceptable level for more than a predefined time period
<b>Pre-conditions</b>	Table grape data (temperature, presence, GPS, etc.) are collected and available in the IoT platforms
<b>Post-conditions</b>	Alert and information about a package are sent and displayed on the warehouse employee application screen
<b>Data</b>	Product data (sensor data, other product information), stored at the various IoT platforms along the supply chain path, that will be sent along with the alert message. All data will be private.
<b>Related scenario(s)</b>	FoodChain_Scenario_2
<b>Priority</b>	Should



<b>Document:</b>	H2020-IOT-2017-3-779984-SOFIE/D5.1 – Baseline System and Measurements						
<b>Security:</b>	Public	<b>Date:</b>	19.12.2019	<b>Status:</b>	Completed	<b>Version:</b>	1.10

#### 3.1.4.4 Trace back in case of a product irregularity

USE CASE	
FIELD	DESCRIPTION
ID	FCP_UC4
Name	Product information auditability
Actors	Supermarket customer
Storyline	When a supermarket customer scans the QR label on a package and notices an irregularity, he/she reports this to the supermarket employee who then accesses the web application in order to trace back the issue
Trigger events	A supermarket customer notices a product's irregularity
Pre-conditions	Table grape data (temperature, presence, GPS, etc.) are collected and available in the IoT platforms. An alert is generated at some point during a product's route.
Post-conditions	Product's alert history is displayed
Data	User data (username, password, employee id, etc.), stored at the web application database that is used by the supermarket employees. This data will be used to provide the supermarket employee access to the web application. Product data (sensor data, other product information), stored at the various IoT platforms along the supply chain path, that will be used to create the QR label. Data will be publicly available to the supermarket customers through the QR labels.
Related scenario(s)	FoodChain_Scenario_2
Priority	Must

#### 3.1.4.5 Smart Irrigation actuation

USE CASE	
FIELD	DESCRIPTION
ID	FCP_UC5
Name	Smart irrigation actuation
Actors	-
Storyline	When logic rules in the SynField platform get triggered by sensor data, smart irrigation is actuated
Trigger events	A predefined combination of field sensor data values
Pre-conditions	Table grape data (temperature, soil humidity, presence, GPS, etc.) are collected and available in the SynField IoT platform
Post-conditions	Smart irrigation system is actuated
Data	Product data (sensor data, other product information), stored at the SynField IoT platform
Related scenario(s)	FoodChain_Scenario_1
Priority	Must

#### 3.1.4.6 Ripening level

USE CASE	
FIELD	DESCRIPTION
ID	FCP_UC6
Name	Check ripening level
Actors	Warehouse employee
Storyline	When the warehouse employee receives the boxes from the transportation employee, he checks the ripening level of the products within the boxes so as to



<b>Document:</b>	H2020-IOT-2017-3-779984-SOFIE/D5.1 – Baseline System and Measurements					
<b>Security:</b>	Public	<b>Date:</b>	19.12.2019	<b>Status:</b>	Completed	<b>Version:</b> 1.10

	place them at the right (from a temperature point of view) spot in the warehouse. He checks the ripening level through a web application.
<b>Trigger events</b>	The warehouse employee receives the boxes from the transportation employee
<b>Pre-conditions</b>	Table grape data (temperature, soil humidity, ripening level, presence, GPS, etc.) are collected and available in the IoT platforms.
<b>Post-conditions</b>	Ripening level information displayed to the warehouse employee
<b>Data</b>	User data (username, password, employee id, etc.), stored at the web application database that is used by the warehouse employees. This data will be used to provide the warehouse employee access to the web application. Product data (sensor data, other product information), stored at the various IoT platforms along the food supply chain.
<b>Related scenario(s)</b>	FoodChain_Scenario_1
<b>Priority</b>	Should

### 3.1.5 User Engagement and Feedback

Since there are end users involved in this pilot, i.e. the supermarket customers, we need to identify and deploy mechanisms to engage them into using the information provided by the system as well as getting their feedback from their experience using it. In SOFIE, we will boost user engagement through the following means:

- Offer rewards for users that scan the QR label or for those who find out that something is wrong with a product. We could do this by embedding a unique code in the QR label information so that a customer can use it to receive a discount at the cashier on the product's original price.
- Encourage active participation of the customers by promoting the quality information included in the QR label as well as giving emphasis on the discount available upon using it.
- Support product ratings by showing additional information in the QR label regarding the times it has been reported by customers a problematic product. This will not pinpoint to a specific part of the food supply chain, leading all the involved parties to be responsible and accountable for any issue as a whole in the eyes of their customers.

Regarding feedback collection we plan on designing anonymous questionnaires that the users will fill at the products' location in the supermarket. The plan for the questionnaires is to formulate a short number of questions addressed to the supermarket customer, aiming to identify the following:

- The usefulness of the product information included and whether it helps him/her towards making a decision on purchasing the product.
- The user-"friendliness" of the displayed information, how easy it was to understand the information presented and how well it was presented.
- What other information might be useful for the customer.

The questionnaires will be placed next to the products in the supermarket in a spot that will allow the customers to find them easily. The questionnaires will be collected in a box at the same location.

## 3.2 Decentralized Energy Data Exchange Pilot (Estonia)

### 3.2.1 Pilot Objectives

The main objective of the Decentralized Energy Data Exchange pilot is to enable trust between parties who exchange energy meter readings. From the smart meter platform owner's side (TSO



<b>Document:</b>	H2020-IOT-2017-3-779984-SOFIE/D5.1 – Baseline System and Measurements					
<b>Security:</b>	Public	<b>Date:</b>	19.12.2019	<b>Status:</b>	Completed	<b>Version:</b> 1.10

or DSO) there is a need for guarantee; who is responsible after the data exchange and how to agree and prove the responsibility. From the brokers, aggregators, energy traders and other energy readings users' side it is important to be reliably verify information from the whole data provenance chain. There is also the smart meter data owner part, which requires transparent overview on who the data access rights are given to and who is responsible for private data handling. Main objective can be divided into three separate goals:

1. To provide means to verify the integrity of smart meter data and processes. This is needed for all participants being owners of smart meter data; either platform operator or the flexible energy service provider or broker.
2. To provide a tamper-proof evidence of smart meter data in case of disputes.

To provide a way to enable and trace the agreements between different parties taking into consideration the challenge coming from the multiple different systems involved in the data exchange, different technologies being used and geographical/cross border distribution of participants.

### 3.2.2 Actors

The actor roles that will appear in the pilot are:

1. **Smart meter system operator (SMSYS)** – Usually TSO (*Transmission System Operator*) but can also be **DSO**, *Distribution System Operator*. The entity responsible for national or regional smart meter network. Has the obligation to run the network grid and manage the smart meter infrastructure. Also, they have the role of providing access (when granted by data owner) to the smart meter data to all interested parties.
2. **Energy service provider (SERVICE)** - DSO, energy company etc. The entity responsible for providing the energy service to the end-user. Main communicator between customer and grid operator. Can own low, medium voltage grid and smart meter infrastructure but it is possible to have no grid/infrastructure responsibilities. In current pilot, the microgrid (a small electricity network attached to a centralized national grid but is able to function independently) manager and user have the same need towards other participants and can be handled, to simplify the scenarios, to have the same role. Main user of the smart meter data to provide cross country flexibility services in energy sector.

**Smart meter owner (OWNER)**, Private entity or company who is legally bound to smart metering point and is interested to consume/produce energy. Has the right to give access of smart meter data.

### 3.2.3 Scenarios

#### 3.2.3.1 SmartMeter access scenario

SCENARIO	
FIELD	DESCRIPTION
History	Priit Anton– V01 – Scenario description
Scenario ID	Energy_EST_Pilot_Scenario_1
Scenario Name	Access to SmartMeter data
Key Actors	SMSYS 1, SMSYS 2, OWNER
Assumptions / Dependencies	<ul style="list-style-type: none"><li>• Both SMSYS operate their own grid and have customer relationship with the OWNER to get consent for giving data access to third parties.</li><li>• The smart meter readings are received by SMSYS platform side in 15 min period.</li></ul>





<b>Document:</b>	H2020-IOT-2017-3-779984-SOFIE/D5.1 – Baseline System and Measurements					
<b>Security:</b>	Public	<b>Date:</b>	19.12.2019	<b>Status:</b>	Completed	<b>Version:</b> 1.10

<b>Objectives</b>	To give access of a specific smart meters from one platform to another and registering the participants and agreements. Being able to prove in case of dispute who gave access and who received the data under what agreement and time.
<b>Description</b>	The SMSYS 1, gets a request from OWNER that his smart meter data should be accessed by SMSYS 2. After checking the digital identity match with Smart meter owner SMSYS sends a proposal to SMSYS 2 for data access and terms of accessing the data. SMSYS 2 confirms the request, agrees on the terms and data access to the SMSYS 2 is committed.
<b>Services</b>	Elering Estfeed TenneT (or similar operator) smart meter platform KSI@Blockchain CORDA R3 distributed ledger Customer request management system
<b>Metrics</b>	Trusted data exchange (agreement on both sides, provable by 3 <sup>rd</sup> party without customer data exposure, low overhead to existing systems integration)

### 3.2.3.2 Data import scenario

SCENARIO	
FIELD	DESCRIPTION
History	Priit Anton – V02 – Scenario description
Scenario ID	Energy_EST_Pilot_Scenario_2
Scenario Name	Data import to National Smart meter platform
Key Actors	SMSYS 1, OWNER, SERVICE
Assumptions / Dependencies	<ul style="list-style-type: none"> <li>SERVICE and OWNER have set up a microgrid (network of smart meters) for energy consumption and have a contract.</li> <li>SMSYS does not have direct access and means to validate or trust the SERVICE operated microgrid.</li> <li>Microgrid data is not connected to the national smart meter platform.</li> </ul>
Objectives	SMSYS 1 needs to trust third party data and be able to verify smart meter readings and metadata. Need to agree on the responsibility of the data access and reception.
Description	OWNER requests service from the SMSYS 1 and gives consent to the SERVICE and SMSYS 1. SERVICE provides SMSYS the access to the smart meter together with the provable data provenance chain and smart meter opt-in process. SMSYS 1 receives the input data, verifies and accepts the terms and opens the data transfer to his smart meter platform. After receiving the OWNER smart meter data feed SMSYS 1 can provide requested service to the OWNER.
Services	DSO forecast system; fleet manager; management system requests for flexibility; flexibility marketplace
Metrics	Seamless microgrid data import to National Smart meter platform together with and agreed responsibilities.

### 3.2.4 Use Cases

#### 3.2.4.1 Dispute solution

USE CASE	
FIELD	DESCRIPTION
ID	EST_Energy_UC1
Name	Dispute solution
Actors	SMSYS1, SERVICE



<b>Document:</b>	H2020-IOT-2017-3-779984-SOFIE/D5.1 – Baseline System and Measurements						
<b>Security:</b>	Public	<b>Date:</b>	19.12.2019	<b>Status:</b>	Completed	<b>Version:</b>	1.10

<b>Storyline</b>	After receiving smart meter data from National Smart meter platform, SERVICE has dispute about the consumption data provided by the SMSYS 1. When the demand for explanation has been made by SERVICE SMSYS 1 asks for the smart meter data (metadata include) for analysis. The comparison of provided smart meter readings and time to the agreed data transfer out of SMSYS 1 system prove that incorrect readings (and the cause of the error) are made outside the SMSYS 1 operated system.
<b>Trigger events</b>	The request from SERVICE side who has potential financial loss caused by false readings.
<b>Pre-conditions</b>	The SMSYS 1 system is connected with smart meter data exchange platform.
<b>Post-conditions</b>	A data exchange, responsibilities and integrity of the exchanged asset are agreed by all parties involved.
<b>Data</b>	Smart meters data used to offer flexible energy service. Private, local. On a blockchain and in distributed ledger.
<b>Related scenario(s)</b>	Energy_EST_Pilot_Scenario_1;
<b>Priority</b>	Must

### 3.2.4.2 Flexibility service request

USE CASE	
FIELD	DESCRIPTION
<b>ID</b>	EST_Energy_UC2
<b>Name</b>	Flexibility service Request
<b>Actors</b>	OWNER, SERVICE, SMSYS 1
<b>Storyline</b>	OWNER request green energy package from SMSYS 1. OWNERS smart meter is connected to microgrid and has contract and infrastructure provided by SERVICE. SERVICE enables access of the smart meter to SMSYS 1 platform with agreed responsibilities and terms. SMSYS 1 starts providing the service through third party microgrid. Based on data SERVICE provides one service invoice will be provided to OWNER who receives a more flexible and cheaper service.
<b>Trigger events</b>	Request from the OWNER to change the energy service provider.
<b>Pre-conditions</b>	SMSYS 1 and SERVICE have agreed on the process of opt-in smart meters and securing the data provenance chain.
<b>Post-conditions</b>	Open market for flexible energy service providers. Possible specialization on specific service sector (solar power production, large household, farmhouse energy service etc.)
<b>Data</b>	Smart meters data used for invoice. On a blockchain and in distributed ledger.
<b>Related scenario(s)</b>	Energy_EST_Pilot_Scenario_2
<b>Priority</b>	Must

### 3.2.5 User Engagement and Feedback

The involved users in this pilot will be the two Transmission System Operators (TSOs), one service provider operating a microgrid and multiple end-users who own the smart meters. To ensure the user engagement there is LoI agreed between the SOFIE consortium and Elering. There are also benefits to other parties that will be promoted by GuardTime like new business opportunities, less investment into integration of existing systems and more nature friendly / lower carbon emission energy services for end-users.

Feedback collection we will be handled by making interviews with all parties and conducting one questionnaire for TSOs and Service provider to get feedback on the value proposition and





<b>Document:</b>	H2020-IOT-2017-3-779984-SOFIE/D5.1 – Baseline System and Measurements					
<b>Security:</b>	Public	<b>Date:</b>	19.12.2019	<b>Status:</b>	Completed	<b>Version:</b> 1.10

potential attractive use-cases for the parties. Also, feedback to the potential risks and adaptation to the new offered technology will be collected.

### 3.3 Decentralized Energy Flexibility Marketplace Pilot (Italy)

#### 3.3.1 Pilot Objectives

The pilot site of Terni will test the blockchain technology applied to a peer to peer mechanism between the DSO, owner of the electricity distribution network (low voltage/medium voltage network), and the Aggregator (EV Fleet Manager). We are considering an end-to-end scenario from electricity production, to distribution, storage and consumption. During the scenario electricity produced by renewable sources (PVs) are fed into the low voltage (LV) electricity network. Most of this electricity will be normally consumed by energy customers (i.e. houses, offices, etc.). However, the surplus of generated power would generate reverse power flows through the LV distribution network substation. The electricity distribution network is designed to handle only unidirectional electricity flows, thus reverse flows may generate significant issues. To avoid this abnormal operation, EVs will be offered significant promotional benefits to match their EV charging needs with the network time and space balancing requirements.

#### 3.3.2 Actors

The actor roles that will appear in the pilot are:

1. **DSO** (Distribution System Operator). The entity responsible for: the distribution network planning and development; the safe and secure operation and management of the distribution network; for data management associated with the use of the distribution network; the request for flexibility services.
2. **Fleet manager** (Aggregator). Actor that operates and controls the EV fleet in the pilot.
3. **EV Users** (Electric Vehicle User). They are users who will use EVs in the pilot.

#### 3.3.3 Scenarios

##### 3.3.3.1 Pull scenario

SCENARIO	
FIELD	DESCRIPTION
History	Alessio Cavadenti – V01 – Scenario description
Scenario ID	Energy_Pilot_Scenario_1
Scenario Name	Pull Offers
Key Actors	DSO, Fleet manager, EV User
Assumptions / Dependencies	<ul style="list-style-type: none"><li>• DSO foresees and provides flexibility to the grid, using charging stations matching time and space balancing requirements;</li><li>• the management system is able to retrieve information in real time</li></ul>
Objectives	To stabilize the power grid due to the geo/local time flexibility provided by the charging stations and to maximize local energy consumption
Description	<p>The DSO, after checking the load and production forecasting of the whole distribution grid, needs to shave peaks of energy produced locally the day after so that instability of the system, overvoltage on the feeder, protection discoordination, increased fault currents, and incorrect operation of equipment could be avoided.</p> <p>Using the marketplace, it will put a flexibility request in the day-ahead market, asking for an amount of energy (kWh), a timeslot, a location (GPS coordinates), granting an incentive (tokens).</p> <p>Meanwhile, the fleet owner performs day ahead itinerary and charging plans for its EV fleet, checking the EV charging price in the platform and matching fleet</p>



<b>Document:</b>	H2020-IOT-2017-3-779984-SOFIE/D5.1 – Baseline System and Measurements					
<b>Security:</b>	Public	<b>Date:</b>	19.12.2019	<b>Status:</b>	Completed	<b>Version:</b> 1.10

	needs with offers in the platform to achieve the maximum bonus available in terms of incentives, accepting the corresponding offers in the marketplace.
<b>Services</b>	DSO forecast system; fleet manager; management system requests for flexibility; flexibility marketplace
<b>Metrics</b>	Reduction of the reverse flow

### 3.3.3.2 Push scenario

SCENARIO	
FIELD	DESCRIPTION
History	Giuseppe Raveduto - 0.1 - Scenario description
Scenario ID	Energy_Pilot_Scenario_2
Scenario Name	Push Offers
Key Actors	DSO, Fleet Manager, EV User
Assumptions / Dependencies	<ul style="list-style-type: none"> <li>the management system is able to retrieve information in real time from the EV</li> <li>DSO foresees the need for a flexibility request to balance the grid</li> <li>the fleet manager (FM) is able to profile EV users</li> <li>EV user is able to pay using virtual tokens, and can receive tokens as incentive</li> </ul>
Objective(s)	To stabilize the power grid due to the geo/local time flexibility provided by the charging stations and to maximize local energy consumption
Description	<p>The DSO, after checking the load and production forecasting of the whole distribution grid, needs to shave peaks of energy produced locally in the same day, to avoid system instability.</p> <p>Using the marketplace, it will put a flexibility request, asking for an amount of energy (kWh), a timeslot, a location (GPS coordinates), granting an incentive (tokens).</p> <p>The system will try to identify potential candidates to fulfil the request, based on:</p> <ul style="list-style-type: none"> <li>- user type</li> <li>- current location</li> <li>- residual autonomy</li> <li>- EV current status</li> </ul> <p>Selected users will receive a notification, offering a token incentive if they agree to charge the vehicle using a predetermined charging station in a specific time interval.</p>
Services	DSO forecasting service; Fleet management system; EV user app; EV users profiling system; Flexibility marketplace;
Metrics	Reduction of the reverse flow

### 3.3.4 Use Cases

#### 3.3.4.1 Flexibility request

USE CASE	
FIELD	DESCRIPTION



<b>Document:</b>	H2020-IOT-2017-3-779984-SOFIE/D5.1 – Baseline System and Measurements					
<b>Security:</b>	Public	<b>Date:</b>	19.12.2019	<b>Status:</b>	Completed	<b>Version:</b> 1.10

<b>ID</b>	EP_UC1
<b>Name</b>	Flexibility Request
<b>Actors</b>	DSO
<b>Storyline</b>	When the DSO foresees a potential reverse flow, the IoT system creates a new request in the flexibility marketplace
<b>Trigger events</b>	The forecast system indicates a potential reverse power flow to be mitigated
<b>Pre-conditions</b>	The DSO system is connected with the flexibility marketplace
<b>Post-conditions</b>	A flexibility request is created in the marketplace, ready to be matched
<b>Data</b>	Smart meters data used for the forecast. Private, local. Settled offers. Public(?), on a blockchain.
<b>Related scenario(s)</b>	Energy_Pilot_Scenario_1; Energy_Pilot_Scenario_2
<b>Priority</b>	Must

#### 3.3.4.2 Pull offer request

USE CASE	
FIELD	DESCRIPTION
<b>ID</b>	EP_UC2
<b>Name</b>	EV Offers request (Pull)
<b>Actors</b>	Fleet Manager
<b>Storyline</b>	When the fleet owner performs day ahead itinerary and charging plans for its EV fleet, he will accept the flexibility requests available in the flexibility marketplace if the requests are compatible with his needs
<b>Trigger events</b>	Fleet Manager is planning day-ahead EV charging and itinerary
<b>Pre-conditions</b>	EVs need to be charged. Load can be postponed to match flexibility requests.
<b>Post-conditions</b>	The EV is charged Fleet Manager receive the agreed incentives for fulfilling the requests.
<b>Data</b>	EVs charging state. Private, local. Planned routes. Private, local. Settled offers. Public(?), on a blockchain.
<b>Related scenario(s)</b>	Energy_Pilot_Scenario_1
<b>Priority</b>	Must

#### 3.3.4.3 Push offer request

USE CASE	
FIELD	DESCRIPTION
<b>ID</b>	EP_UC3
<b>Name</b>	EV Offers request (Push)
<b>Actors</b>	Fleet Manager; EV User
<b>Storyline</b>	When the user receives a discounted price notification, he will accept the flexibility request available in the flexibility marketplace if the request is compatible with his transport needs.
<b>Trigger events</b>	EV User is alerted by a discounted price notification
<b>Pre-conditions</b>	EV need to be charged. Load can be postponed to match flexibility requests.
<b>Post-conditions</b>	The EV is charged The user receives the agreed incentive for fulfilling the request.
<b>Data</b>	EVs charging state. Private, local. User Profile. Private, local. Settled offers. Public(?), on a blockchain.
<b>Related scenario(s)</b>	Energy_Pilot_Scenario_2



<b>Document:</b>	H2020-IOT-2017-3-779984-SOFIE/D5.1 – Baseline System and Measurements					
<b>Security:</b>	Public	<b>Date:</b>	19.12.2019	<b>Status:</b>	Completed	<b>Version:</b> 1.10

<b>Priority</b>	Must
-----------------	------

#### 3.3.4.4 Fleet monitoring

USE CASE	
FIELD	DESCRIPTION
<b>ID</b>	EP_UC4
<b>Name</b>	EV and EVSE fleet monitoring
<b>Actors</b>	Fleet Manager
<b>Storyline</b>	To perform both Energy Pilot Scenarios, Fleet Manager have to constantly monitoring EV and EVSE fleet
<b>Trigger events</b>	Monitoring can be executed periodically or on demand triggered by the EV/EVSE fleet manager
<b>Pre-conditions</b>	Deployed EVs and EVSEs; The EVSE and EV data will be handled considering the EU and national laws regarding privacy and data protection; Data should be reliable and consistent; EVSE unique identifier; EV unique identifier; Security in communications; Connectivity and Interoperability between EV and EVSE systems.
<b>Post-conditions</b>	Correct communication between actors. Overview on the status of the EVSE portfolio and the EV fleet.
<b>Data</b>	EV status information: Battery State-of-Charge (%), residual Autonomy (Km), minutes to Full Charge (m), Geographic location, Doors Car State, Engine Car State (On/Off); EVSE status information: out of service, number of sockets in use, current vehicle ID attached.
<b>Related scenario(s)</b>	Energy_Pilot_Scenario_1, Energy_Pilot_Scenario_2
<b>Priority</b>	Should

#### 3.3.4.5 Load forecasting

USE CASE	
FIELD	DESCRIPTION
<b>ID</b>	EP_UC5
<b>Name</b>	EV load forecasting
<b>Actors</b>	Fleet Manager
<b>Storyline</b>	To perform the Pull Offers Scenario, the Fleet Manager has to constantly calculate EV load forecasting to estimate the amount of energy that electric vehicles can consume to meet the DSO's flexibility demand.
<b>Trigger events</b>	The EV load forecasting will be calculated periodically (every day).
<b>Pre-conditions</b>	The data collection from EVSE should be performed to have historical data and to know the status of the EVSEs
<b>Post-conditions</b>	The EV load forecasting is updated in the Fleet Manager data repository to be used
<b>Data</b>	Energy parameters, measured by a smart meter on each EVSE socket: power, voltage, current and energy.
<b>Related scenario(s)</b>	Energy_Pilot_Scenario_1
<b>Priority</b>	Should

<b>Document:</b>	H2020-IOT-2017-3-779984-SOFIE/D5.1 – Baseline System and Measurements					
<b>Security:</b>	Public	<b>Date:</b>	19.12.2019	<b>Status:</b>	Completed	<b>Version:</b> 1.10

### 3.3.4.6 District forecasting

USE CASE	
FIELD	DESCRIPTION
<b>ID</b>	EP_UC6
<b>Name</b>	District forecasting
<b>Actors</b>	DSO
<b>Storyline</b>	To perform Energy Scenarios, the DSO has to constantly calculate building consumption forecasting, PV production forecasting and manage batteries to estimate the amount of energy demand at ASM substation
<b>Trigger events</b>	Forecasting will be calculated periodically (every day). Need to reduce undesired reverse power flows
<b>Pre-conditions</b>	The data collection should be performed in real time (or very close to real time) and should be secure and reliable
<b>Post-conditions</b>	The building load forecasting is updated in the DSO data repository to be used The RES production will be monitored and forecasted in order to reduce reverse power flow
<b>Data</b>	Energy parameters, measured by a smart meter: power, voltage, current and energy. Weather parameters: solar irradiance (in W/m2), outdoor temperature, presence of rain, presence of snow.
<b>Related scenario(s)</b>	Energy_Pilot_Scenario_1, Energy_Pilot_Scenario_2
<b>Priority</b>	Must

### 3.3.5 User Engagement and Feedback

The involved users in this pilot will be the DSO operator, the fleet manager and the EV user. User engagement will be determined by the benefits provided by the platform:

- DSO operator: will benefit from the increase of local energy consumption within the micro-grid, reducing the reverse power flow.
- Fleet manager: will reduce the total cost of fleet recharging, due to the provided incentives.
- EV User: probably can be rewarded with a fraction of the incentive tokens collected by the fleet manager, or can benefit directly from incentives in the “push” scenario.

Regarding feedback collection we will offer questionnaires that the EV users will fill aiming to identify the following:

- The compatibility of its charging plans with the provided incentives.
- The user-“friendliness” of the displayed information, how easy it was to understand the information presented and how well it was presented.

## 3.4 Mixed Reality Mobile Gaming Pilot (Finland)

### 3.4.1 Pilot Objectives

The focus of this pilot will be on leveraging DLT to provide new gaming features for players with alongside seeking validation of potential location and IoT use cases. It will seek to overcome known technical issues; in principle the ability of DLTs to scale so as to cost-effectively support millions of active users per day with thousands of transactions per second. The pilot will also seek to investigate business issues, namely:



<b>Document:</b>	H2020-IOT-2017-3-779984-SOFIE/D5.1 – Baseline System and Measurements					
<b>Security:</b>	Public	<b>Date:</b>	19.12.2019	<b>Status:</b>	Completed	<b>Version:</b> 1.10

- **Game discovery:** how to reach mass market - given mobile app ecosystem (Apple / Google) access restriction on cryptocurrencies.
- **IoT device scale:** devices fit for gaming use cases that can easily provide global scale so players can engage in their locality.

### 3.4.2 Actors

The actor roles that will appear in the pilot are:

1. **Player:** this actor is the consumer playing the game. A critical requirement for the player is that the game should meet the motivation needs - achievement, social and immersion. The player should be able to own and trade content within the game and interact with IoT devices.
2. **Game Developer:** this actor is responsible for development and operation of the game. Expectations for this role include the continuous development ('live operation') of the game - 'game as a service'. Core game and mini-games could be developed by different game developers.
3. **Location owner:** this actor provides the IoT device used for interaction with the game. This for example could be a beacon that the player interacts with at a location via the game.

### 3.4.3 Scenarios

#### 3.4.3.1 Collection and Trading scenario

SCENARIO	
FIELD	DESCRIPTION
History	David Mason - v1.0 - First scenario description
Scenario ID	Game Pilot Scenario 1
Scenario Name	Collect + Trade
Key Actors	Game Developer Player
Assumptions / Dependencies	DLT used to publish core game content 'DNA'. DLT enables transfer of ownership of game content.
Objective(s)	Player can collect 'own' and trade 'transfer ownership' of in game content.
Description	Enable players to collect and trade in-game content swapping or buying with other players (e.g. characters, weapons, equipment, parts) leveraging DLTs to provide player ownership of the asset, an open market for trading transactions, transparency and consistency of asset attributes and transactions. Attributes 'DNA' of the in-game assets would be published on the blockchain.
Services	SOFIE supported DLT used to store game content
Metrics	1,000's of transaction per second to support millions of daily active users

#### 3.4.3.2 Mini-game scenario

SCENARIO	
FIELD	DESCRIPTION
History	David Mason - v1.0 - First scenario description
Scenario ID	Game Pilot Scenario 2
Scenario Name	Mini-game
Key Actors	Game Developer Player



<b>Document:</b>	H2020-IOT-2017-3-779984-SOFIE/D5.1 – Baseline System and Measurements					
<b>Security:</b>	Public	<b>Date:</b>	19.12.2019	<b>Status:</b>	Completed	<b>Version:</b> 1.10

<b>Assumptions / Dependencies</b>	DLT used to publish game content 'DNA' so that mini-games can leverage core game content
<b>Objective(s)</b>	Game developer can build mini-games on top of core game content
<b>Description</b>	To enable extension games "mini-games" to be built on top of the assets published on top of the blockchain. This will enable innovation potentially by other developers and extension of the original core game providing players with increased game depth. Leverage attributes 'DNA' of the core game assets via the blockchain.
<b>Services</b>	SOFIE supported DLT used to store game content
<b>Metrics</b>	1,000's of transaction per second to support millions of daily active users

### 3.4.3.3 IoT mini-game scenario

SCENARIO	
FIELD	DESCRIPTION
<b>History</b>	David Mason - v1.0 - First scenario description
<b>Scenario ID</b>	Game Pilot Scenario 3
<b>Scenario Name</b>	IoT Mini-game
<b>Key Actors</b>	Location Owner Game Developer Player
<b>Assumptions / Dependencies</b>	DLT used to publish game content 'DNA' so that mini-games can leverage core game content Location interaction via IoT device
<b>Objective(s)</b>	Game developer can build IoT mini-games on top of core game content with location owner providing IoT device for location interaction.
<b>Description</b>	Extension games would enable IoT games to be built around the core game. Game(s) to leverage IoT devices via the SOFIE platform to provide game experiences, for example using Beacons for a scavenger hunt completing 'collection' missions built on the assets from the core game potentially providing a reward in the game of from the locations - Location Owner (e.g. retailer)
<b>Services</b>	SOFIE federated IoT devices
<b>Metrics</b>	1,000's of transaction per second to support millions of daily active users with real-time interaction with IoT devices

## 3.4.4 Use Cases

### 3.4.4.1 Game content DNA

USE CASE	
FIELD	DESCRIPTION
<b>ID</b>	MG_1
<b>Name</b>	Game Content DNA
<b>Actors</b>	Game Developer Player
<b>Storyline</b>	DLT used to publish core game content 'DNA'. DLT enables transfer of ownership of game content and mini-games.
<b>Trigger events</b>	New content created and published by game developer or by player.
<b>Pre-conditions</b>	Timed publication of new content with transparent content DNA
<b>Post-conditions</b>	Content can be collected, owned, traded and used within mini-games
<b>Data</b>	Attributes of content DNA defined by game
<b>Related scenario(s)</b>	Game Pilot Scenario 1, Game Pilot Scenario 2, Game Pilot Scenario 3





<b>Document:</b>	H2020-IOT-2017-3-779984-SOFIE/D5.1 – Baseline System and Measurements						
<b>Security:</b>	Public	<b>Date:</b>	19.12.2019	<b>Status:</b>	Completed	<b>Version:</b>	1.10

<b>Priority</b>	Must
-----------------	------

#### 3.4.4.2 Game-IoT interaction

USE CASE	
FIELD	DESCRIPTION
<b>ID</b>	MG_2
<b>Name</b>	Game IoT interaction
<b>Actors</b>	Location Owner Game Developer Player
<b>Storyline</b>	Player interacts with IoT device in location via the mini-game
<b>Trigger events</b>	Interaction of player with location IoT device
<b>Pre-conditions</b>	IoT device location and interactions are known by the game
<b>Post-conditions</b>	Real-time interaction with IoT device so game play is real-time
<b>Data</b>	Interaction data to be defined by mini-game design e.g. Scavenger game and IoT devices used for location interaction e.g. Beacon
<b>Related scenario(s)</b>	Game Pilot Scenario 3
<b>Priority</b>	Must

#### 3.4.5 User Engagement and Feedback

User engagement takes into account both acquisition of users and then retention of the lifetime of the game. The factors that will drive this will be dependent on multiple factors including the accessibility of the game - can I readily download and play, is the game fun - do I want to play this game, and is the game deep enough for repeated play - do I want to play this game again and again.

Feedback will be collected through play-testing - where a gamer is monitored in person, and through surveys - where players are asked in-game to complete a feedback survey.



<b>Document:</b>	H2020-IOT-2017-3-779984-SOFIE/D5.1 – Baseline System and Measurements					
<b>Security:</b>	Public	<b>Date:</b>	19.12.2019	<b>Status:</b>	Completed	<b>Version:</b> 1.10

## 4 Data management, pilot test cases and KPIs

This section provides an indicative, non-exhaustive description of the data that will be collected during the pilot activities and the methodologies that will be applied in order to achieve that. The reader is encouraged to find more detailed descriptions in deliverable D6.5 - Data Management Plan and its updates.

This section also provides an initial definition of the pilot test cases aiming to validate the proper operation of SOFIE platform and facilitate on-site, overall evaluation of SOFIE functionality and performance, in relation to the defined use cases per pilot. To consistently documenting test cases across pilots, the following template is used to report all relative information and results.

Test ID	Unique ID of the test
Test description	Brief description of the test objective (few lines)
Test location	Location where test takes place
Related use cases	Related use cases ( <u>as they have been updated in D5.2</u> )
Related requirements	The requirement(s) which is validated by the test case ( <u>as they have been defined in D5.2</u> )
Component(s)/Feature(s) under test	Components/Features under test ( <u>as they are depicted in the pilot reference architecture defined in D5.2</u> )
Test environment	Preconditions relate to business/technical/facilities aspects that must hold before test execution
Dependencies	(Optional) Test cases that should be verified before this test
Steps	Testing procedure, i.e. sequence of actions during test execution
Pass criteria	Expected (measurable) results or system state that allows to unambiguously judge the success of the test case

The section also introduces pilot oriented KPIs to measure the performance of deployed technology and proposed solutions and address the unique specificities of each pilot and interests of stakeholders<sup>1</sup>. These KPIs will be used to embody strategic objectives of pilots, track performance of different aspects during pilot activities, of both technological and business type, indicate possible corrective actions need to take place and facilitate the final evaluation of pilot activities.

Note that any necessary correction action and update upon defined pilot test cases and KPIs, as well as the final results of the pilot test cases and final evaluation of the KPIs will be reported in later documents of the WP5, i.e. “D5.3: End-to-end Platform Validation” and “D5.4: Final Validation & Replication Guidelines”.

### 4.1 Food Supply Chain Pilot (Greece)

#### 4.1.1 Capture Data and Retention

##### 4.1.1.1 Data to be collected

The Food Supply Chain pilot will collect data from all the IoT platforms involved along the path from-field-to-fork. That includes sensor data from the various sensors, as well as (meta) data which is generated as the actors interacting with the platform through the FSC web application.

<sup>1</sup> CEN. Maintenance - maintenance key performance indicators. Technical Report EN 15341, CEN - European Committee for Standardization, Brussels, Belgium, January 2006.



<b>Document:</b>	H2020-IOT-2017-3-779984-SOFIE/D5.1 – Baseline System and Measurements					
<b>Security:</b>	Public	<b>Date:</b>	19.12.2019	<b>Status:</b>	Completed	<b>Version:</b> 1.10

The data from all IoT platforms will be in JSON format leading to easy integration. The data will be stored in each IoT platform storage infrastructure (subset of them will also be stored in the deployed DLTs) and will be private. Access to the pilot participants will be provided through the business platform. The data that will be generated will be related to commercial products and companies; therefore, it will not be publicly available. However, we plan to make a testing dataset publicly available after applying the appropriate anonymization policies. That dataset will be created for testing and repeatability purposes and will resemble data collected for the scenarios described in section 3.1.3.

#### 4.1.1.2 Data collection methodologies

For the FSC pilot, the following main data collection methodologies will be utilized:

1. Data logging from sensor devices
2. Data which is pushed into the platform through the FSC web application.
3. Questionnaires used to evaluate the performance of the system

All sensor devices that will be deployed along the path from-field-to-fork will provide data to the involved IoT platforms. This data will then be stored and processed according to the business logic of each platform.

In order to get end user feedback (as mentioned in section 3.1.5) and evaluate pilot KPIs, questionnaires will be used. Those will be used mainly as a means of evaluation of the usefulness of the Food Chain pilot services as a whole. As mentioned earlier, these questionnaires will be anonymous. Table 3, presents an indication of the types and the size of the collected data for the first two methodologies mentioned above. More details are provided in deliverable “D6.5 – Data Management Plan” and its updates.

*Table 3: Data collected in the Food Supply Chain pilot*

Category	Data type	Unit	Frequency	Size
Field sensor measurements (per SynField node)	Temperature	Celsius degrees	20min	<2KB
	Humidity	% value	20min	
	Rain volume	Mm	20min	
	Soil type	Level	20min	
	Leaf wetness	% value	20min	
	Ripening level	Natural number	Once per day	<1KB
Transportation sensor measurements (per Truck gateway)	Box (Tag) presence detection	Binary	20 sec	<2KB
	Temperature	Celsius degrees	20 sec	
Warehouse sensor measurements (per monitored storage room)	Temperature	Celsius degrees	5min	< 1KB
	Humidity	%	5min	
Data collected through the FSC	Metadata for register assets	Datums (json obj.)	Once per asset registration (IoT	< 1KB

<b>Document:</b>	H2020-IOT-2017-3-779984-SOFIE/D5.1 – Baseline System and Measurements					
<b>Security:</b>	Public	<b>Date:</b>	19.12.2019	<b>Status:</b>	Completed	<b>Version:</b> 1.10

			platform, box, field/truck/warehouse room)	
	Metadata for boxes transfer	Datums (json obj.)	Per transaction in the private ledger	< 1KB
Questionnaires	Feedback from the end users testing the pilot services	Graphs and charts	Optional for the end-users	N/A

#### 4.1.2 Pilot Test Cases

The overview of the FSC pilot platform is shown in Figure 1.

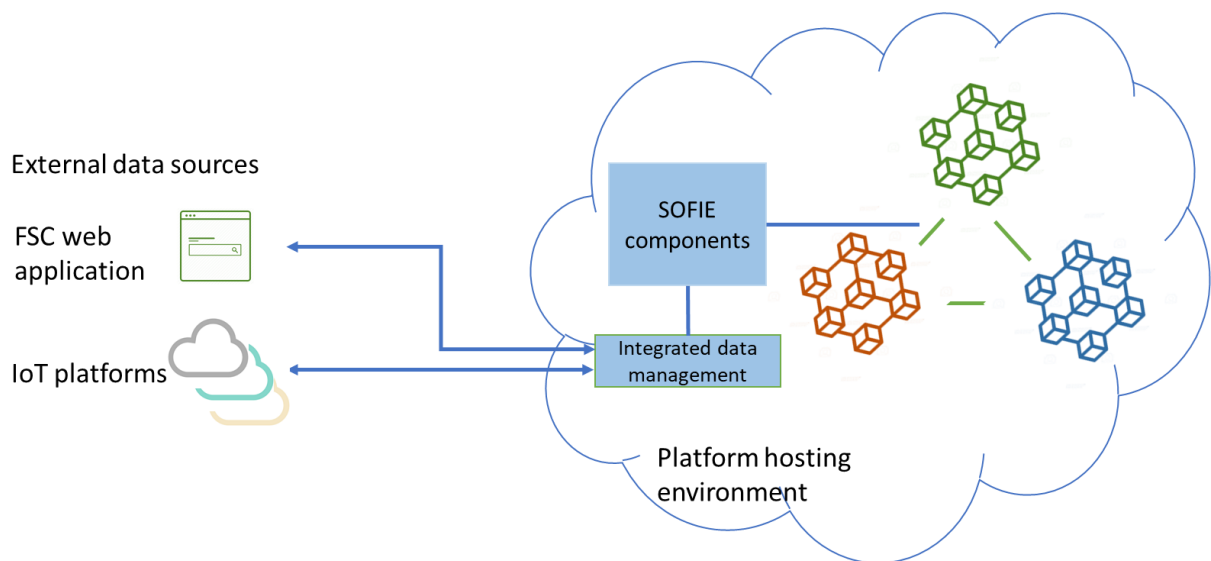


Figure 19: Overview of the FSC pilot

To define pilot test cases in an incremental and more integrated approach (rather than a stand-alone component-based approach) that takes also into account operational aspects of the testing environment and not only pilot software architecture and SOFIE framework components, pilot tests are defined in reference to the set of main functional features defined in Table 4.

Table 4: Main functionalities in the FSC pilot

ID	Functional features	Description
F1	AAA	Authentication, authorization and accounting functionality to internal services and stored data.
F2	Metering & data collection	Functionality related to the proper metering and data collection from federated IoT platforms or other types of data sources.
F3	Streaming & communication link protection	Functionality related to the protection and the security of information exchanged between the various software/hardware components of the pilot setup.
F4	Asset management	Functionality related to assets management (i.e. boxes carrying products) and handling of (meta)data used to monitor assets status.



<b>Document:</b>	H2020-IOT-2017-3-779984-SOFIE/D5.1 – Baseline System and Measurements					
<b>Security:</b>	Public	<b>Date:</b>	19.12.2019	<b>Status:</b>	Completed	<b>Version:</b> 1.10

F5	User interaction	Functionality responsible to support a proper execution (as expected) of actors' actions.
----	------------------	---

The following table summarizes the pilot test cases which are planned for the FSC pilot.

*Table 5: Test Cases in the FSC pilot*

<b>Test ID</b>	<b>FSC_TC01</b>
Test description	Measurements from each deployed sensing device are collected by the corresponding IoT platform and they are properly stored in its database system.
Test location	IoT platforms used to monitor field, transportation and warehouse sites
Related use cases	FSC_UC2, FSC_UC4, FSC_UC6, FSC_UC7, FSC_UC8, FSC_UC9
Related requirements	REQ_FSC0.4, REQ_FSC 7.1, REQ_FSC 9.1, REQ_FSC 9.2, REQ_FSC 14.1
Feature(s) under test	Metering & data collection
Test environment	Devices are placed on site and IoT platforms are operational. The IoT platform provides an endpoint to retrieve (past) data which is collected from an integrated sensing device.
Dependencies	N/A
Steps	<ol style="list-style-type: none"> <li>1. Sensing devices are deployed on site and they are properly configured to communicate and send data to the corresponding IoT platform.</li> <li>2. Collect data from a given period of time (e.g. few days)</li> <li>3. Use IoT platform API to retrieve data from each integrated sensing devices within a specific time period.</li> </ol>
Pass criteria	All relevant measurement values are properly retrieved.
<b>Test ID</b>	<b>FSC_TC02</b>
Test description	Each registered actor of any type (e.g. producer, transporter, warehouse, supermarket employee) can access and perform all the services provided by the FSC web application based on its role.
Test location	Field/warehouse/supermarket location
Related use cases	FSC_UC1-FSC_UC12, FSC_UC14
Related requirements	REQ_FSC0.1, REQ_FSC0.2, REQ_FSC0.3
Feature(s) under test	AAA
Test environment	The actor has already registered in the pilot platform. SOFIE platform has been deployed in the production environment. Used tablet by the actor must have internet connection.
Dependencies	N/A



<b>Document:</b>	H2020-IOT-2017-3-779984-SOFIE/D5.1 – Baseline System and Measurements					
<b>Security:</b>	Public	<b>Date:</b>	19.12.2019	<b>Status:</b>	Completed	<b>Version:</b> 1.10

Steps	<ol style="list-style-type: none"> <li>1. The actor initiates an HTTPS session to the FSC web application login page.</li> <li>2. The HTTPS traffic is intercepted and the authorization is initiated by the Authentication Server (AS) of the SOFIE platform. The login page is sent to the actor.</li> <li>3. The actor enters a username and password, which are sent to the AS of the SOFIE platform.</li> <li>4. The OAuth2.0 server authenticates the actor and creates a unique token that is used to enable role-based access to FSC web application resources.</li> </ol>
Pass criteria	Actor's access policy is activated. The actor is able to access FSC web application resources.
<b>Test ID</b>	<b>FSC_TC03</b>
Test description	Test that box reuse is possible (after its release) and that registration of a box with an ID that is already used by another box is impossible (box unique identifier).
Test location	On site by using the FSC web application.
Related use cases	FSC_UC5, FSC_UC12
Related requirements	REQ_FSC 5.1, REQ_FSC 5.2, REQ_FSC 12.1
Feature(s) under test	Asset management
Test environment	An actor uses the FSC web application to perform the action under test.
Dependencies	FSC_TC02 is successful.
Steps	<ol style="list-style-type: none"> <li>1. An actor (transporter) enters its profile in the FSC web applications and activates register box action.</li> <li>2. The actor provides as input to the action a box ID which has been already registered in the used DLT.</li> <li>3. The actors provides as input the ID of a released box.</li> </ol>
Pass criteria	Registration of a box with an already used ID (by another box) is prohibited. Reuse of a released box is possible.
<b>Test ID</b>	<b>FSC_TC04</b>
Test description	Presence of a group of boxes (RFID tags) is detected as they are placed/removed inside the truck.
Test location	Inside the truck
Related use cases	FSC_UC3, FSC_UC4, FSC_UC7, FSC_UC8
Related requirements	REQ_FSC 5.2
Feature(s) under test	Metering & data collection, Asset management



<b>Document:</b>	H2020-IOT-2017-3-779984-SOFIE/D5.1 – Baseline System and Measurements					
<b>Security:</b>	Public	<b>Date:</b>	19.12.2019	<b>Status:</b>	Completed	<b>Version:</b> 1.10

Test environment	GW and sensors of the transportation IoT platform have been deployed inside the truck. RFID reader has been calibrated to scan certain area of the truck. Tags are attached upon the boxes.
Dependencies	N/A
Steps	<ol style="list-style-type: none"> <li>1. A number of boxes are placed inside the truck at a certain time instant.</li> <li>2. Some of the boxes are removed from the truck at a certain time instant.</li> <li>3. The boxes which were removed in step 2) are placed again inside the truck at a certain time instant but in different location (inside the RFID range)</li> </ol>
Pass criteria	The presence of all the boxes inside the truck is properly detected by the transportation IoT platform all times (taking also into account the delay in collecting measurements)
<b>Test ID</b>	<b>FSC_TC05</b>
Test description	The SOFIE platform receives data from the transportation GW deployed in the truck i) as the vehicle moves, and ii) as the vehicle engine is turned off.
Test location	As the vehicle moves and makes stops from one place to another (on the road)
Related use cases	FSC_UC7
Related requirements	REQ_FSC 6.1
Feature(s) under test	Metering and data collection services
Test environment	GW and sensors of the transportation IoT platform have been deployed inside the truck. Tags are attached on boxes. The truck is moved and 3G/4G coverage exist in the followed route.
Dependencies	FSC_TC04 is successful.
Steps	<ol style="list-style-type: none"> <li>1. A group of boxes is placed inside the truck.</li> <li>2. At a certain time the truck starts to move from site A to site B.</li> <li>2. Before reaching its destination, the truck stops for certain period of time and its engine is turned off for certain period of time (few minutes).</li> <li>3. The engine is turned on and the truck moves to reach site B.</li> </ol>
Pass criteria	The presence of the boxes inside the truck is continually detected (given the used time resolution in collecting data from the truck) from A to B.
<b>Test ID</b>	<b>FSC_TC06</b>
Test description	Data and metadata provided by the actors through the FSC web application are recorded in DLTs. The payload of any transaction is verified.
Test location	On site, depending on the type of activity





<b>Document:</b>	H2020-IOT-2017-3-779984-SOFIE/D5.1 – Baseline System and Measurements					
<b>Security:</b>	Public	<b>Date:</b>	19.12.2019	<b>Status:</b>	Completed	<b>Version:</b> 1.10

Related use cases	FSC_UC1-FSC_UC12, FSC_UC14
Related requirements	REQ_FSC0.5, REQ_FSC1.1, REQ_FSC3.1, REQ_FSC 5.3, REQ_FSC 5.4, REQ_FSC 6.2, REQ_FSC 14.12, Security Challenge #1
Feature(s) under test	Asset management, User interaction
Test environment	An actor uses the FSC web application to perform the action under test.
Dependencies	FSC_TC02 is successful.
Steps	<ol style="list-style-type: none"> <li>1. An actor accesses the FSC web application and activates an action.</li> <li>2. The actor performs any operation in the physical world is requested to complete the action (e.g. boxes onboarding in the truck) and inputs the necessary (meta)data.</li> <li>3. The actor completes the action (thus data is recorded in the used DLTs)</li> <li>4. The actor accesses the logs of the performed operation and verifies that information recorded in the DLTs is correct.</li> </ol>
Pass criteria	Data of the transaction which is stored in the DLTs matches the relative activity and metadata.
<b>Test ID</b>	<b>FSC_TC07</b>
Test description	Metadata related to an actor's activity (in the FSC app.) is accessible by that actor at any time and is invisible to any other actor.
Test location	On site by using the FSC web application
Related use cases	FSC_UC1-FSC_UC12, FSC_UC14
Related requirements	REQ_FSC14.3, REQ_FSC14.4
Feature(s) under test	AAA, User interaction
Test environment	An actor uses the FSC web application to perform the action under test.
Dependencies	FSC_TC02 is successful.
Steps	<ol style="list-style-type: none"> <li>1. An actor logs in using his profile in the FSC web application.</li> <li>2. The actor performs a number of actions</li> <li>3. The actor confirms that he can access the logs of all performed actions and that recorded information per (trans)action is correct.</li> <li>4. The actor tries to access a view/endpoint for which he doesn't have the authority (based on his role).</li> </ol>
Pass criteria	Access of each actor to its own resources is allowed, while access to other resources is prohibited.
<b>Test ID</b>	<b>FSC_TC08</b>
Test description	A QR code which is created by the supermarket employee using the FSC web application can be read offline by using different smartphones devices. Readability of all included information is confirmed.



<b>Document:</b>	H2020-IOT-2017-3-779984-SOFIE/D5.1 – Baseline System and Measurements					
<b>Security:</b>	Public	<b>Date:</b>	19.12.2019	<b>Status:</b>	Completed	<b>Version:</b> 1.10

Test location	On site by using a smartphone.
Related use cases	FSC_UC13
Related requirements	REQ_FSC2.1, REQ_FSC 11.1, REQ_FSC 11.4, REQ_FSC 11.5, REQ_FSC 13.1
Feature(s) under test	User interaction.
Test environment	A QR code has been attached upon a product package. The used smartphones have a QR reading application.
Dependencies	N/A
Steps	1. The customer uses a smartphone to read information encoded in the QR code of the package. 2. The action is repeated by using five different smartphone devices/QR reading applications.
Pass criteria	The revealed information includes (at least) the following information: farm location, type of product, harvesting date, used fertilizers, packetizing date, ID of used box and session ID.
<b>Test ID</b>	<b>FSC_TC9</b>
Test description	Test that the audit service can access/process data streams containing relevant information and discard requests containing irrelevant information, e.g. improper box ID and session ID.
Test location	On site by using the FSC web application
Related use cases	FSC_UC14
Related requirements	REQ_FSC 14.1
Feature(s) under test	User interaction
Test environment	A quality issue is detected on a product package. A QR code has been attached to the package.
Dependencies	FSC_TC08 is successful.
Steps	1. The supermarket employee scans the QR code attached on the product. 2. The supermarket employee requests an audit by accessing the corresponding service in the FSC web application and providing box ID and session ID values.
Pass criteria	Audit services is properly executed once relevant data is provided whereas aborted in the cases of irrelevant data.

#### 4.1.3 Pilot KPIs

Following the definition of the Global KPIs in D.4.1 and D4.3, the KPIs used for system (operational) performance and key business success of SOFIE FSC pilot are summarized in Table 6.

<b>Document:</b>	H2020-IOT-2017-3-779984-SOFIE/D5.1 – Baseline System and Measurements					
<b>Security:</b>	Public	<b>Date:</b>	19.12.2019	<b>Status:</b>	Completed	<b>Version:</b> 1.10

Table 6: KPIs for the Food Supply Chain pilot

KPI	Name	Description	Metric	Method of measurement	Target
<b>System performance</b>					
KPI_FSC_1	Ledger execution cost in public ledger	Cost for executing operations on a ledger	Ledger execution cost (e.g., gas in Ethereum)	Measure the total execution cost per box	As low as possible
KPI_FSC_2	Handover time	Time to register data to blockchain during a handover between two stages	Time unit (e.g., seconds)	Measure the total time required for blockchain-related operations during a handover of a box between two stages	<1min
KPI_FSC_3	Internal state transition time	Time to register data to blockchain during a box' state transition occurring internally within a single stage	Time units (e.g. seconds)	Measure the total time required for blockchain-related operations during a state transition of a box within a single stage	<30sec
KPI_FSC_4	Throughput	Number of boxes that can be processed per time unit in any possible handover or internal state transition	Number of boxes per time unit	Measure the handover and state transition delays	>6000 boxes per day
KPI_FSC_5	Time Scalability	Blockchain registration time for a handover or internal state transition, as a function of the number of boxes involved	Derivative of the blockchain registration time with respect to the number of boxes involved	Measure handover and state transition blockchain registration time as a function of the number of boxes involved	linear or sublinear
KPI_FSC_6	Cost Scalability	Public blockchain costs associated with box handovers or internal state transitions, as a function of the number of boxes involved	Derivative of public ledger cost with respect to the number of boxes involved	Measure public blockchain cost for handovers and state transitions as a function of the number of boxes involved	linear or sublinear
KPI_FSC_7	Response time for audit requests	The time it takes to respond to an audit request, by pulling out all data related to the box in question	Time units (e.g. minutes)	Measure the time it takes to pull out all records related to a given box, and to cross check them to identify potential issues	<1min

<b>Document:</b>	H2020-IOT-2017-3-779984-SOFIE/D5.1 – Baseline System and Measurements					
<b>Security:</b>	Public	<b>Date:</b>	19.12.2019	<b>Status:</b>	Completed	<b>Version:</b> 1.10

Business goals					
KPI_FSC_8	Customer confidence improvement	Confidence of consumers on brands and product authenticity, safety and quality	Mean opinion score	Use of questionnaires to measure customer feedback	≥4.0/5.0
KPI_FSC_9	Time for QR creation	The time it takes for the supermarket employee to create the QR code which is attached on a packet and includes all the history of the product.	Time units (e.g. seconds)	Measure QR creation delay in the backend platform	≤1sec
KPI_FSC_10	Increase in the effectiveness of targeted product withdrawals	Stored traceability data is used to perform targeted withdrawals of products, thereby minimising disruption to trade	% reduction in the scope of the product recall	Use of questionnaires to get feedback from the supermarket company and compare with current practices based on paper records.	≥50% reduction
KPI_FSC_11	Percentage of product defects which are resolved	Number of defects or anomalies detected on a delivered by the customer which are explained through deficiencies in the supply chain operation. It excludes defects that are not due to the involved organizations.	% per total instances	Use of questionnaires to measure the success of resolved product defects based on the business rules that have been set by the involved organizations	≥90%

## 4.2 Decentralized Energy Data Exchange Pilot (Estonia)

### 4.2.1 Capture Data and Retention

#### 4.2.1.1 Data to be collected

The data that is collected during the Decentralized Energy Data Exchange (DEDE) pilot can be split into three categories:

- 1) Energy data exchange metrics. General metadata for the data exchange solution. SOFIE adapters will collect metrics regarding all interactions.
- 2) List of service providers. Data describing the service providers who are interested in consumption/production data.
- 3) List of credential issuers. Data describing the credential issuers - what regions do those represents, supported authentication methods.

More detailed view of the data and processes are described in deliverable “D6.5 - Data Management Plan”.

The pilot makes data exchange possible and does not store metering data itself.



<b>Document:</b>	H2020-IOT-2017-3-779984-SOFIE/D5.1 – Baseline System and Measurements					
<b>Security:</b>	Public	<b>Date:</b>	19.12.2019	<b>Status:</b>	Completed	<b>Version:</b> 1.10

#### 4.2.1.2 Data collection methodologies

The Decentralized Energy Data Exchange pilot is a decentralized system and does not have central components and no central point for logging. Instead data collection takes place in SOFIE federation adapter level and this data is aggregated later.

*Table 7: Data collected in the Decentralized Energy Data Exchange pilot*

Category	Data type	Unit	Frequency	Size
Data collected in Federation adapter	Number of active adapter; number of requests per type	Number	Log entry for every data interaction	<2KB
Service entities	List of service providers	Text	Once per day	<10KB
Service entities	List of credential issuers	Text	Once per day	<10KB

#### 4.2.2 Pilot Test Cases

Table 8 summarizes the pilot test cases planned for the Decentralized Energy Data Exchange pilot. Final test results as well as any possible update of this set will be described in “D5.3 - End-to-end Platform Validation” and “D5.4 - Final Validation & Replication Guidelines”.

*Table 8: Test Cases in the Decentralized Energy Data Exchange pilot*

Test ID	DEDE_TC01
Test description	Request for electricity consumption data from data hub by data owner.
Test location	Energy Data Exchange Customer Portal
Related use cases	DEDE_UC1, DEDE_UC2
Related requirements	REQ_DEDE1.1, REQ_DEDE1.2, REQ_DEDE2.2, REQ_DEDE2.3
Component(s)/Feature(s) under test	Federation adapter
Test environment	Federation adapter has been installed and configured on both sides of the data exchange - customer portal and data hub. Data owner has been authenticated in customer portal and a credential proving his identity has been issued to him.
Dependencies	N/A
Steps	1. Data owner selects a data hub to request data from
Pass criteria	Customer portal shows a table with electricity consumption data received as a result from the data hub.
Test ID	DEDE_TC02
Test description	Delegation of access rights to electricity consumption data from data owner to a third party.
Test location	Energy Data Exchange Customer Portal
Related use cases	DED_UC3, DED_UC4
Related requirements	REQ_DEDE2.1, REQ_DEDE2.4, REQ_DEDE2.5



<b>Document:</b>	H2020-IOT-2017-3-779984-SOFIE/D5.1 – Baseline System and Measurements					
<b>Security:</b>	Public	<b>Date:</b>	19.12.2019	<b>Status:</b>	Completed	<b>Version:</b> 1.10

Component(s)/Feature(s) under test	Federation adapter
Test environment	Federation adapter has been installed and configured by third party. Third party is known to the customer portal and offered as a target for delegation.
Dependencies	DEDE_TC01
Steps	<ol style="list-style-type: none"> <li>1. Data owner selects a third party to delegate access to</li> <li>2. Data owner specifies the data hub that is the target of delegated access</li> <li>3. Third party requests data from the data hub on behalf of data owner</li> </ol>
Pass criteria	Third party sees a table with electricity consumption data received as a result from the data hub.
<b>Test ID</b>	<b>DEDE_TC03</b>
Test description	Request for audit log concerning data owner from the data hub.
Test location	Energy Data Exchange Customer Portal
Related use cases	DED_UC5, DED_UC6
Related requirements	REQ_DEDE2.2, REQ_DEDE2.3, REQ_DEDE2.7, REQ_DEDE5.1, REQ_DEDE5.2
Component(s)/Feature(s) under test	Federation adapter
Test environment	Both data owner and delegated third party have performed requests to the data hub. Therefore the audit log is not empty at the data hub.
Dependencies	DEDE_TC02
Steps	<ol style="list-style-type: none"> <li>1. Data owner selects a data hub to request audit log from</li> </ol>
Pass criteria	Customer portal shows the audit log received from the data hub containing all the requests made by data owner himself or by delegated third parties.
<b>Test ID</b>	<b>DEDE_TC04</b>
Test description	Performance of the federation adapter, measured by the number of requests handled per second.
Test location	Federation adapter of a data hub.
Related use cases	DEDE_UC2
Related requirements	REQ_DEDE1.1
Component(s)/Feature(s) under test	Federation adapter
Test environment	Federation adapter has been installed and configured by the data hub and a test client. A test script has been prepared to generate and send requests to data hub.
Dependencies	N/A
Steps	<ol style="list-style-type: none"> <li>1. Test script is executed to start sending a preconfigured amount of requests to the data hub</li> </ol>





<b>Document:</b>	H2020-IOT-2017-3-779984-SOFIE/D5.1 – Baseline System and Measurements					
<b>Security:</b>	Public	<b>Date:</b>	19.12.2019	<b>Status:</b>	Completed	<b>Version:</b> 1.10

	2. Total time of completing all the requests is measured and throughput in requests per second is calculated
Pass criteria	Federation adapter is able to service at least 100 requests per second.

#### 4.2.3 Pilot KPIs

System performance and business KPIs for the Decentralized Energy Data Exchange pilot are summarized in Table 9.

*Table 9: KPIs for the Decentralized Energy Data Exchange pilot*

KPI	Name	Description	Metric	Method of measurement	Target
<b>System Performance</b>					
KPI_DEDE_1	Response time for DID operations	Time for performing read/write operations on the identity ledger (Hyperledger Indy)	Time units (e.g. seconds)	Measure time between instant system receives a request until the instant that the system responds	<5 sec
KPI_DEDE_2	Response time for KSI Blockchain signatures	Time for retrieving KSI Blockchain signature	Time units (e.g. seconds)	Measure time between instant system receives a request until the instant that the system responds	<2 sec
KPI_DEDE_3	Processing time of requests in adapter	Time for the processing incoming requests in adapter - includes audit log entry, verifying credentials, setting up secure channel	Time units (e.g. seconds)	Measure time between instant system receives a request until the instant that the system responds	<5 sec
KPI_DEDE_4	Response time for audit logs	Time for the system to respond to audit log requests	Time units (e.g. seconds)	Measure time between instant system receives a request until the instant that the system responds	<15 sec
KPI_DEDE_5	Scalability – cost	Increase of cost as load (number of DID operators or retrieving KSI Blockchain signatures per time unit) increases	Ratio of delta cost over delta of load (number of DID operators or retrieving KSI Blockchain	Measure cost for different loads	linear or sublinear



<b>Document:</b>	H2020-IOT-2017-3-779984-SOFIE/D5.1 – Baseline System and Measurements						
<b>Security:</b>	Public	<b>Date:</b>	19.12.2019	<b>Status:</b>	Completed	<b>Version:</b>	1.10

			signatures per time unit))		
KPI_DEDE_6	Scalability – time	Increase of response time as load (e.g. number of transactions per time unit, number of nodes) increases	Ratio of delta time over delta of load (number of transactions/nodes)	Measure response time for different loads	Linear or sublinear
<b>Business goals</b>					
KPI_DEDE_7	SOFIE adapter overhead for DSO/TSO	Sysadmin of DSO/TSO must be content that the operation of the new 3rd party (SOFIE adapter integrator) code does not affect the existing data access to service providers) The use of SOFIE adapters should not delay the access to data (expectations to grant access in a matter of seconds)	Time units (e.g. seconds)  Impact measured in DSO system performance change	Measure the time it takes to get the service provider to get access to the data or get response that the access has been revoked by data owner.  Measure the impact of SOFIE adapter to DSO/TSO existing data access services	Time: seconds  Impact to system: 0% (only push requests to be serviced from SOFIE adapter)
KPI_DEDE_8	SOFIE added security feature for TSO/DSO and Auditor	All users who install the SOFIE adapters want to see the human readable events and their proofs in order to confirm that the decisions they made through SOFIE adapter can be verified by them and proved to any third party.	Comparison of logs -> number of created events  Comparison of events created and events proved.	Measure how many SOFIE adapter system logs have been transferred to the human readable events; How many have been signed by KSI blockchain and the provenance chain provided.	Number of registered <b>events</b> in the log vs number of provenance chain/proof of integrity for each <b>event</b>
KPI_DEDE_9	SOFIE adapter functionality delivered geographically to data owner	SOFIE adapter usage must be measured in cross country situation. the functionality and the proof of	YES / NO  number of participants	Measure how many different (geographically) data owners can get access to the functionality that	Access to new service: YES/NO



<b>Document:</b>	H2020-IOT-2017-3-779984-SOFIE/D5.1 – Baseline System and Measurements					
<b>Security:</b>	Public	<b>Date:</b>	19.12.2019	<b>Status:</b>	Completed	<b>Version:</b> 1.10

		using adapters must be provided.		SOFIE adapter offers	Number of countries = 3
--	--	----------------------------------	--	----------------------	-------------------------

## 4.3 Decentralized Energy Flexibility Marketplace Pilot (Italy)

### 4.3.1 Capture Data and Retention

#### 4.3.1.1 Data to be collected

The Decentralized Energy Flexibility Marketplace pilot, collects data from EV charging stations (i.e. number of sockets in use, current EV ID connected, energy data), voltmeters, current meters, as well as logs and access data from servers, demand/response data, PV power generation data and EV data (i.e. battery State-of-Charge (%), residual autonomy (Km), minutes to full charge (m), geographic location, doors car state, engine car state). Collected data will be in CSV, XLS, JSON or raw format while their volume will be around some KBs. Electric mobility data will be stored in EMOT server machine, with the following characteristics:

- CPU: 2 core 3.1 GHz;
- HDD: 50 GB;
- RAM: 4 GB;
- S.O.: Ubuntu 16.04.6 LTS.

Access for partners will be provided, if needed for the project objectives. However, the data will not be made public.

Data will be collected from IoT platforms; relevant data will be stored using the platform's blockchain infrastructure.

#### 4.3.1.2 Data collection methodologies

EV data will be collected each 5 seconds, using the communication between EMOT on-board diagnostic device and EMOT TCP/IP server, and EVSE data will be collected each 2 seconds, using communication between EMOT charging station single board computer and EMOT TCP/IP server.

All the smart meters, electric vehicles and charging stations will provide data to the involved IoT platforms. Table 10 summarizes the categories of considered dataset. This data will then be stored and processed according to the business logic of each platform.

*Table 10: Data collected in the Decentralized Energy Flexibility Marketplace pilot*

Category	Data type	Unit	Frequency
Charging station data	JSON	Some kBs	2 sec.
EV data	JSON	Some kBs	5 sec.
Power profiles of energy consumption and production	JSON	Some kBs	5 sec.

### 4.3.2 Pilot Test Cases

Table 11 summarizes the pilot test cases planned for the Decentralized Energy Flexibility Marketplace (DEFM) pilot.

<b>Document:</b>	H2020-IOT-2017-3-779984-SOFIE/D5.1 – Baseline System and Measurements					
<b>Security:</b>	Public	<b>Date:</b>	19.12.2019	<b>Status:</b>	Completed	<b>Version:</b> 1.10

Table 11: Test cases in the Decentralized Energy Flexibility Marketplace pilot

<b>Test ID</b>	<b>DEFM_TC01</b>
Test description	Measurements from smart meters are collected by the IoT platform and are properly stored and accessible
Test location	smart meters deployed at pilot site
Related use cases	DEFM_UC1, DEFM_UC6
Related requirements	REQ_DEFM1.1-REQ_DEFM1.6; REQ_DEFM2.2
Feature(s) under test	Metering & data collection
Test environment	Smart meters are placed on site and IoT platforms are operational. The IoT platform provides endpoints to retrieve historical and real-time data provided by the smart meters
Dependencies	N/A
Steps	1. Smart meters are deployed on the pilot site 2. The system is configured to provide the correct URLs to access the resources 3. Data is retrieved using APIs
Pass criteria	historical and real-time data provided by the smart meters are properly retrieved
<b>Test ID</b>	<b>DEFM_TC02</b>
Test description	Real-time data from charging station is properly accessible
Test location	EVSE deployed at pilot site
Related use cases	DEFM_UC4, DEFM_UC5
Related requirements	REQ_DEFM2.1-REQ_DEFM2.8
Feature(s) under test	Metering & data collection
Test environment	EVSE are placed on site and IoT platforms are operational. The EVSE provide an endpoint to retrieve real-time data about the charging operations
Dependencies	N/A
Steps	1. EVSE are deployed on the pilot site 2. The system is configured to provide the correct URLs to access the resources 3. Data is retrieved using APIs
Pass criteria	Real-time charging data provided by the EVSE is properly retrieved
<b>Test ID</b>	<b>DEFM_TC03</b>
Test description	Smart contract functionalities are accessible and provide the expected output
Test location	Marketplace smart contract, deployed at pilot site
Related use cases	DEFM_UC1
Related requirements	REQ_DEFM1.1-REQ_DEFM1.6

<b>Document:</b>	H2020-IOT-2017-3-779984-SOFIE/D5.1 – Baseline System and Measurements					
<b>Security:</b>	Public	<b>Date:</b>	19.12.2019	<b>Status:</b>	Completed	<b>Version:</b> 1.10

Feature(s) under test	Decentralized marketplace management
Test environment	The smart contract is developed and deployed on site. The marketplace module provides endpoints to map smart contract methods with APIs
Dependencies	N/A
Steps	<ol style="list-style-type: none"> <li>1. The system is configured, public/private keypairs for each actor are generated</li> <li>2. The marketplace software module is accessible</li> <li>3. The DSO uses marketplace API to create requests</li> <li>4. The Fleet manager uses marketplace API to create matching offers</li> <li>5. The DSO uses marketplace API to select the winning offer</li> <li>6. The DSO uses marketplace API to pay using tokens the winning offer after the delivery</li> </ol>
Pass criteria	All the marketplace functionalities are working as expected, tokens are transferred after a successful transaction

### 4.3.3 Pilot KPIs

System performance and business KPIs for the Decentralized Energy Data Exchange pilot are summarized in Table 12.

Table 12: KPIs for the Decentralized Energy Flexibility Marketplace pilot

KPI	Name	Description	Metric	Method of measurement	Target
<b>System Performance</b>					
KPI_DEFM_1	Hardware deployment	Devices deployment effort and configuration time	Time needed to deploy and federate IoT devices	Time needed for an operator to configure a new IoT device after the deploy	<1w
KPI_DEFM_2	Compatibility	Compatibility with existing infrastructure	Number of existing infrastructure s federated	Number of existing systems interoperating using SOFIE platform	2
KPI_DEFM_3	Interoperability of federated platforms	Degree of interoperability	Interoperable data models	Usage of open specifications and data models	1
KPI_DEFM_4	IoT platforms	Federation of different IoT platforms	Number of different IoT	Usage of different IoT systems	3

<b>Document:</b>	H2020-IOT-2017-3-779984-SOFIE/D5.1 – Baseline System and Measurements					
<b>Security:</b>	Public	<b>Date:</b>	19.12.2019	<b>Status:</b>	Completed	<b>Version:</b> 1.10

			platforms interacting		
KPI_DEFM_5	DLTs	Transaction over different DLTs	Number of different DLTs interacting	Usage of different DLTs	2
<b>Business goals</b>					
KPI_DEFM_6	RPF reduction	Amount of RPF reduced	kWh/day	Measure the energy that flows from the users to the network in the secondary /primary substations.	about 15 kWh/ day
KPI_DEFM_7	Power losses reduction	Reduced flow in comparison with business as usual operation	kWh	Measure the reduced flows because of a better overlapping among consumptions	about 1 kWh saved in comparison with Business as usual operation
KPI_DEFM_8	Voltage under the limits	Voltage waveforms among the limits	Voltage limits %	Assess the voltage waveforms among the limits and according to network configuration	Voltage limits in +/- 1%
KPI_DEFM_9	Green energy consumption	increased share of consumption from green energy producers	kWh	Measure the reduction of RPF and therefore the increased share of consumptions drawn from green energy producers	About 15 kWh
KPI_DEFM_10	EV fleet manager metrics	Involvement in DR campaign provide advantageous energy price for EV Fleet Manager, due to DSO benefits and Retailers auction	Monetary savings	Measure the money saved involving EV fleet in DR Campaigns: energy cost in DR campaign vs energy cost in not-DR campaign	money saved: 0,13 €/kWh



<b>Document:</b>	H2020-IOT-2017-3-779984-SOFIE/D5.1 – Baseline System and Measurements					
<b>Security:</b>	Public	<b>Date:</b>	19.12.2019	<b>Status:</b>	Completed	<b>Version:</b> 1.10

## 4.4 Mixed Reality Mobile Gaming Pilot (Finland)

### 4.4.1 Capture Data and Retention

#### 4.4.1.1 Data to be collected

##### Mobile Game Analytics

Session data collected from the consumer playing the game is used to understand player behaviours and to improve and tune the game. This data will be collected from game's smartphone client, game server, and game services (payment etc.). Data collection and storage process will utilize Rovio's data analytics pipeline. This data will be in JSON format, MBs in size, with the potential for billions analytic events.

##### IoT device data

Data collected from IoT devices used to as part of IoT mini-game(s). These game(s) would leverage IoT devices via the SOFIE platform to provide game experiences, for example using Beacons for a scavenger hunt completing 'collection' missions built on the assets from the core game potentially providing an in-game reward at the locations (e.g. retailer). This data will be JSON format, KBs in size per device (potentially there could be millions of used devices).

#### 4.4.1.2 Data collection methodologies

For this pilot two main data collection methodologies will be utilized:

- Analytic events logging from game client (smartphone) and IoT device data
- In-game surveys of players.

Table 13 summarized the categories of the data collected in the pilot. More details can be found in Deliverable 6.5 (Data Management Plan).

*Table 13: Data collected in the Mixed Reality Mobile Gaming pilot*

Category	Data type	Unit	Frequency
Mobile Game Analytics	Session data collected from the consumer playing the game i.e. average play time	Seconds	After every hunt played
Player Feedback	Feedback from the players collected using the In-game survey.	Graphs and charts	Optional for the players
IoT device data	Data collected from IoT devices i.e. battery level.	Percentage %	Once per day

### 4.4.2 Pilot Test Cases

Table 14 summarizes the pilot test cases planned for the Mixed Reality Mobile Gaming (MRMG) pilot.

*Table 14: Test cases in the Mixed Reality Mobile Gaming pilot*

Test ID	MRMG_TC1
Test description	As the mobile gets in the range of Bluetooth of the IoT beacons, it downloads the hunt data automatically from the backend server.
Test location	Bluetooth beacon location



<b>Document:</b>	H2020-IOT-2017-3-779984-SOFIE/D5.1 – Baseline System and Measurements					
<b>Security:</b>	Public	<b>Date:</b>	19.12.2019	<b>Status:</b>	Completed	<b>Version:</b> 1.10

Related use cases	MRMG_UC1
Related requirements	REQ_ MRMG0.1, REQ_ MRMG1.1, REQ_ MRMG1.2, REQ_ MRMG1.5
Component(s)/Feature(s) under test	Playing challenges
Test environment	IoT Devices are placed on site and mobile client should sense the Bluetooth and retrieve task data from the server.
Dependencies	<ul style="list-style-type: none"> <li>Player registered</li> </ul>
Steps	<ul style="list-style-type: none"> <li>Player joins the Hunt</li> <li>Players go to the correct Bluetooth location</li> <li>Mobile client retrieves task data from server.</li> </ul>
Pass criteria	Bluetooth beacon should be detected by the mobile client in less than 4 secs
<b>Test ID</b>	<b>MRMG_TC2</b>
Test description	Adding a custom task to the already deployed IoT beacons, combination of multiple tasks makes a single challenge in the game pilot.
Test location	Computer
Related use cases	MRMG_UC5
Related requirements	REQ_ MRMG0.1, REQ_ MRMG1.1, REQ_ MRMG1.3, REQ_ MRMG5.1, REQ_ MRMG5.2, REQ_ MRMG7.1
Component(s)/Feature(s) under test	Adding new Hunts
Test environment	Create a new hunt and add tasks to it
Dependencies	<ul style="list-style-type: none"> <li>User registered</li> </ul>
Steps	<ul style="list-style-type: none"> <li>Game developer adds the details for the hunt and multiple tasks</li> <li>Developer add rewards to the hunt</li> <li>After completion hunt data is stored on the server and move rewards to escrow on blockchain.</li> </ul>
Pass criteria	Hunt is published and shown in the mobile game application
<b>Test ID</b>	<b>MRMG_TC3</b>
Test description	After the tokenization of the new assets, transfer the ownership of the asset to another user
Test location	Mobile application
Related use cases	MRMG_UC4
Related requirements	REQ_ MRMG0.1, REQ_ MRMG2.2, REQ_ MRMG4.1, REQ_ MRMG4.2
Component(s)/Feature(s) under test	Asset trading
Test environment	Create a new assets and transfer ownership



<b>Document:</b>	H2020-IOT-2017-3-779984-SOFIE/D5.1 – Baseline System and Measurements					
<b>Security:</b>	Public	<b>Date:</b>	19.12.2019	<b>Status:</b>	Completed	<b>Version:</b> 1.10

Dependencies	<ul style="list-style-type: none"> <li>User registered</li> <li>Owns the asset</li> </ul>
Steps	<ul style="list-style-type: none"> <li>User selects the asset</li> <li>Publish it on marketplace using the interledger component.</li> <li>Change the ownership to new buyer by the smart contract.</li> </ul>
Pass criteria	Ownership of the asset is changed.
<b>Test ID</b>	<b>MRMG_TC4</b>
Test description	After completing a Hunt, rewards are added to the player's wallet.
Test location	Mobile application
Related use cases	MRMG_UC2
Related requirements	REQ_MRMG0.1, REQ_MRMG1.1, REQ_MRMG1.2, REQ_MRMG1.4, REQ_MRMG1.5, REQ_MRMG1.6, REQ_MRMG1.8, REQ_MRMG2.2
Component(s)/Feature(s) under test	Redeem rewards
Test environment	Players completes the hunt in the specified time
Dependencies	<ul style="list-style-type: none"> <li>User registered</li> <li>Playing a hunt</li> </ul>
Steps	<ul style="list-style-type: none"> <li>User completes a hunt</li> <li>Server calculates point based on the performance of the user.</li> <li>Rewards are added to players wallet using the smart contract on blockchain.</li> </ul>
Pass criteria	Rewards are awarded to the player.

#### 4.4.3 Pilot KPIs

System performance and business KPIs for the pilot are summarized in Table 15.

Table 15: KPIs for the Mixed Reality Mobile Gaming pilot

KPI	Name	Description	Metric	Method of measurement	Target
<b>System Performance</b>					
KPI_MRMG_1	Public ledger execution cost	Cost for executing operations on a public ledger.	Ledger execution cost units (e.g. gas in Ethereum)	Measure the total execution cost for all operations that a transaction involves	As low as possible
KPI_MRMG_2	Response time for write requests	Time for the system to respond to game state altering transactions, such as challenge creation & completion,	Time in seconds	Measure time between instant system receives a request or transaction until the instant that the system responds	< 3 sec



<b>Document:</b>	H2020-IOT-2017-3-779984-SOFIE/D5.1 – Baseline System and Measurements					
<b>Security:</b>	Public	<b>Date:</b>	19.12.2019	<b>Status:</b>	Completed	<b>Version:</b> 1.10

		skipping tasks, and buying in-game items			
KPI_MRMG_3	Response time for read requests	Time for the system to respond to non-altering requests such as getting player's currencies and items	Time in seconds	Measure time between instant system receives a request or transaction until the instant that the system responds	< 1 sec
KPI_MRMG_4	Throughput	Maximum number of transactions per time unit that the system can support	Number of transactions per time unit	Measure transactions per time unit	> 222 read and > 133 write transactions per second
KPI_MRMG_5	BLE beacon detection time	The time player has to wait between walking definitely into the correct location and receiving the context-dependent task	Time in seconds	Measure average time between the instant player walks into the correct location and the client detects the beacon	< 4 sec
KPI_MRMG_6	Scalability - cost	Increase of cost as number of challenges or active users increases	Ratio of delta cost over delta of challenges or active users	Measure cost for different numbers of challenges or active users	Linear or sublinear
KPI_MRMG_7	Scalability – time	Increase of response time as number of challenges or active users increases	Ratio of delta time over delta of challenges or active users	Measure response time for different numbers of challenges or active users	Linear or sublinear
<b>Business goals</b>					
KPI_MRMG_8	Gaming player metrics	Gaming experience is fun and valued by the player	Graphs and charts	In-game surveys	As good as possible
KPI_MRMG_9	Customer metrics	Customer satisfaction  Time and effort for finding resources	Graphs and charts	Customer feedback	As good as possible
KPI_MRMG_10	Revenue opportunity	Means to generate revenue per day	Amount spent in Euros	Average cost spent by the player	€100,000+ per day