

Product: KLUDI LOGO NEO single lever bath- and shower mixer DN 15

Ref.: 376810575

Product description

single lever bath- and shower mixer DN 15
solid lever
wall fastening
flow class CA
aerator M 24 x I
ceramic cartridge with hot water safety device
automatic diverter: shower to bath tub
shower outlet G 1/2
protected against back flow
S unions
without shower set
noise group I
PA- IX 19339/ICA

Finishes:
chrome

Advertisement

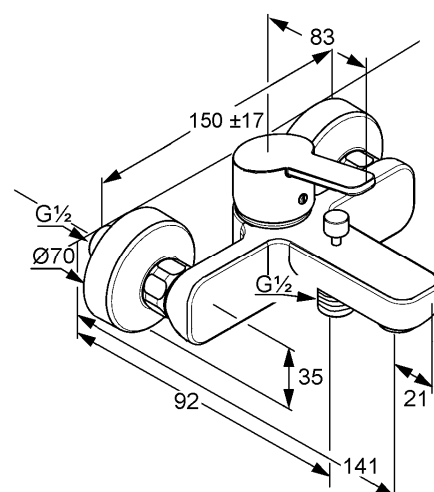
- * KLUDI GmbH & Co KG KLUDI LOGO NEO single lever bath- and shower mixer item no. 376810575
- ** ceramic cartridge with hot water safety device Ø 35 mm, DIN EN 817
- *** chrome plated brass, DIN 50930-6

single lever bath- and shower mixer, manufacturer KLUDI GmbH & Co KG KLUDI LOGO NEO single lever bath- and shower mixer item no. 376810575, DN 15, chrome plated brass, solid lever, noise level DIN 4109 group I, report no. PA- IX 19339/ICA, type: single lever bath- and shower mixer DN 15, nozzle projection 141/162 mm, S unions 1/2 x 3/4 inch, aerator M 24 x I C, flow class C A (max. 0,35 l/s), automatic diverter: shower to bath tub, protected against back flow DIN EN 1717, shower outlet 1/2 inch, lever projection 83 mm, ceramic cartridge with hot water safety device Ø 35 mm, without shower set, for pressure type water heater, for continuous line heater, PN 10,

Product picture



Dimensional drawing



Flow rate diagram

