

# Laminate flooring Range



**PARADOR**

living performance

# Art of living meets perfor- mance demand

For us, the art of living is an appreciation of beauty and to create inspiration out of it at any moment in time.

Performance is a permanent feature of our life. Day after day, we demand performance. Delivering daily performance requires solid ground beneath our feet.



**PARADOR**

# Every day performance

Living spaces are an expression of our individual attitude to life and of our own individual demands. For us, making high demands means having an awareness for quality. At Parador, we unite this awareness for quality with a sense for the classic and a flair for the time in which we live. The result is a wide spectrum of products, whose confident style down to the last detail is equally convincing as the natural impression of their material.

## Philosophy

We have developed a value compass that guides us through all our decisions. It determines how Parador acts and gives what we do a sense of reliability. This applies to our company and our products, through which our inner attitude is expressed: we live for products that make any home the most beautiful home in the world. Attention to detail, inventiveness and a willingness to develop go hand in hand with our products. We work every day to delight demanding customers.

## Inspiration

Many people love and feel the inspiration behind products. That is why we expand energy and commitment to create new possibilities and realise convincing products. Developments from architecture and interior design that provide impetus, a feel for trends, stimuli from lifestyle, handcraft and art repeatedly inspire our product developers and designers to come up with new ideas. This is how creative design, installation patterns and finishes emerge, which allow our products to become trendsetters in flooring design.

## Design

For us, design is an expression of personality: it places the focus on individualism and independent ideas. Imaginative graphic motifs and decors open up an unlimited scope for creativity with uncompromising production perfection. Our internal design team and the collaboration with outstanding personalities from the international design scene are a guarantee of this scope. The result is convincing and unusual products that underline Parador's claim as a creative leader.

## Quality

Parador offers premium quality "Made in Germany". Our many years of experience provides the foundation for this combined with the relentless drive to further develop our expertise in all relevant areas. Our customers can tell the quality of our laminate floors by the brilliance of our decors as well as by the particularly good anti-swelling behaviour of the core boards and the perfect click connections. These properties characterise the faultless appearance of the Parador installation over the long term.



## Materiality

Laminate flooring is made almost a hundred per cent out of wood and is therefore a material and inspiration at the same time. Together with the high density wood fibreboards, the decor papers enable high quality timbers to be interpreted authentically. But other materials, such as stone or concrete, can also be found among our true to nature laminate decors with their different formats, installation and joint patterns.

## Technology

Parador laminate floors are distinguished by a functional composition and intelligent technology. For example, our patented click system guarantees easy installation, edge impregnation protects against moisture, and the wear-resistant top layer made of melamine resin ensures very high durability. Our wear classes show that the floors are also suitable for heavy duty use. Our sturdy connections, which ensure fitting accuracy and stability, are crucial for a long-lasting, resilient result.

## Health in the home

Parador laminate floors are low on emissions and allergens and ensure a pleasant indoor climate. We are happy to demonstrate this by only using materials that are healthy for the home. Test certificates issued by the LGA and Blue Angel give our customers the required peace of mind. Furthermore, increased conductivity reduces electrostatic charge. Our laminate flooring is very durable and easy to clean, meaning that it is perfectly suitable for households with pets, children and allergy sufferers.

## Sustainability

As a traditional wood processing company, we hold our environment in the highest esteem. For us, living with a certain quality standard in the present must go hand in hand with responsibility to conserve the planet for future generations. We stand up to this responsibility with products that set standards in terms of ecology with the materials used and their processing, production, packaging and also logistics. What is more, we have been actively committed to conserving the environment for years.





Institut Bauen  
und Umwelt e.V.

Gemeinsam mit dem EPLF  
engagiert sich Parador für mehr  
Nachhaltigkeit im Bauwesen.  
**EPD-ELF-2009111-E**

## Product lines

Parador creates flooring ranges that are as discerning and individual as the people who live with them. That is why the Parador assortment also offers a large selection of widely different products. For initial guidance, five selected product lines are available. They provide a reliable basis for finding the right floor quickly and simply.

### Basic

The entry-level floor



The Parador Basic product line offers a variety of attractive laminate floors for the price-conscious buyer, which impress by their style as much as their expedience.

### Classic

The classic floor



For advanced demands, good quality and elegance are found in the traditional and universally functional floors from the Classic range.



## Trendtime

The sophisticated floor



The wide variety in the Trendtime premium sector offers a variety of formats and designs at the utmost level and enables fashion-conscious furnishing with contemporary design.

## Eco Balance

The sustainable floor



Eco Balance brings ecology and style in perfect harmony and takes account of our growing responsibility towards nature. Sustainable production methods and a particularly conservational approach to wood as a natural material prove our claim of producing environmentally sustainable and natural floors.

You will find all the information about this range in the Parador Eco Balance brochure.

## Edition

The exclusive floor



Edition by Parador symbolizes furnishing that creates value in a very special architecture. Fashioned by reputable designers, the Edition assortment offers an exclusive selection of inimitable laminate decors – for individuality at the premier level.

You will find all the information about this range in the brochures Parador Edition and Parador New Classics Design by Hadi Teherani.

# Laminate flooring Basic



---

Antique grey tile look  
flamed texture

Basic 500

---





# Laminate flooring Basic

## Block



**Maple natural 3-strip**  
wood texture  
0V-groove (1426411)  
**Basic 200**



**Acacia grey 3-strip**  
matt-finish texture  
0V-groove (1426414)  
**Basic 200**



**Beech 2-strip**  
wood texture  
0V-groove (1440984)  
**Basic 200**



**Oak patina white 3-strip**  
matt-finish texture  
0V-groove (1426413)  
**Basic 200**



**Ash sanded 3-strip**  
matt-finish texture  
0V-groove (1426399)  
**Basic 200**



**Walnut 2-strip**  
wood texture  
0V-groove (1426416)  
**Basic 200**



**Apple bernstein 2-strip**  
wood texture  
0V-groove (1426505)  
**Basic 400**



**Ocean-Teak 3-strip**  
matt-finish texture  
0V-groove (1426506)  
**Basic 400**



## Wide planks



**Walnut wide plank**  
wood texture  
0V-groove (1426419)  
**Basic 200**



**Baltic Pine wide plank**  
wood texture  
0V-groove (1426510)  
**Basic 400**



**Oak sanded wide plank**  
matt-finish texture  
0V-groove (1426462)  
**Basic 400**



**Oak light-grey wide plank**  
matt-finish texture  
mini 4V-groove (1426530)  
**Basic 400**



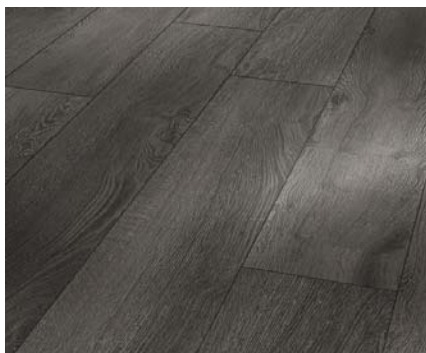
**Oak sand wide plank**  
matt-finish texture  
0V-groove (1474398)  
**Basic 400**



**Oak Serenissima wide plank**  
matt-finish texture  
0V-groove (1474397)  
**Basic 400**



**Pine Country wide plank**  
wood texture  
0V-groove (1440987)  
**Basic 400**



**Oak anthracite wide plank**  
matt-finish texture  
mini 4V-groove (1474399)  
**Basic 400**



**Oak Colonial wide plank**  
matt-finish texture  
mini 4V-groove (1474401)  
**Basic 400**

## Wide planks



**Oak crystal-white wide plank**  
wood texture  
mini 4V-groove (1474400)  
**Basic 400**



**Oak natural wide plank**  
wood texture  
mini 4V-groove (1440988)  
**Basic 400**



**Teak bleached wide plank**  
matt-finish texture  
mini 4V-groove (1426529)  
**Basic 400**



**Oak Atlantic wide plank**  
brushed texture  
mini 4V-groove (1467201)  
**Basic 600**



**Oak basalt-grey wide plank**  
matt-finish texture  
mini 4V-groove (1467205)  
**Basic 600**



**Oak limed white oiled wide plank**  
matt-finish texture  
mini 4V-groove (1467203)  
**Basic 600**



**Oak Montmartre wide plank**  
brushed texture  
mini 4V-groove (1467204)  
**Basic 600**



**Oak Millennium wide plank**  
brushed texture  
mini 4V-groove (1467202)  
**Basic 600**

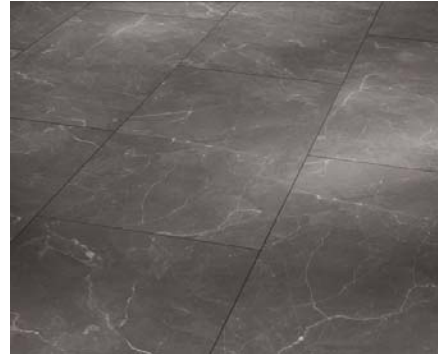
## Tile look



**Antique grey tile look**  
flamed texture  
mini 4V-groove (1467174)  
**Basic 500**



**Antique white tile look**  
flamed texture  
mini 4V-groove (1467173)  
**Basic 500**



**Botticino tile look**  
stone texture  
mini 4V-groove (1467178)  
**Basic 500**



**Slate grey tile look**  
stone texture  
mini 4V-groove (1467175)  
**Basic 500**



**Slate anthracite tile look**  
stone texture  
mini 4V-groove (1467176)  
**Basic 500**



Parador

Laminate flooring

# Laminate flooring Classic

---

Ash white limed  
brilliant texture

Classic 1050

---





# Laminate flooring Classic

## Block



**Wych elm honey 2-strip**  
relief texture  
0V-groove (1517575)  
Classic 1050



**Oak lava 2-strip**  
matt-finish texture  
0V-groove (1475584)  
Classic 1050



**Oak Vintage sawn 2-strip**  
rough-sawn texture  
0V-groove (1474075)  
Classic 1050



**Ash tropic 2-strip**  
fine-grained texture  
0V-groove (1475591)  
Classic 1050



**Larch antique 2-strip**  
design texture  
0V-groove (1518085)  
Classic 1050



**Cedar 2-strip**  
fine-grained texture  
0V-groove (1505277)  
Classic 1050



**Oak natural 3-strip**  
genuine embossed  
0V-groove (1518081)  
Classic 1050



**Oak silver 3-strip**  
matt-finish texture  
0V-groove (1518079)  
Classic 1050



**Ash aged 3-strip**  
matt-finish texture  
0V-groove (1505276)  
Classic 1050



## Block



**Ash white limed 3-strip**  
brilliant texture  
0V-groove (1517646)  
Classic 1050



**Walnut antique 3-strip**  
fine-grained texture  
0V-groove (1475595)  
Classic 1050



**Walnut california 3-strip**  
brilliant texture  
0V-groove (1517577)  
Classic 1050



**Walnut natural oil finish 3-strip**  
brilliant texture  
0V-groove (1517650)  
Classic 1050



**Ocean-Teak 3-strip**  
matt-finish texture  
0V-groove (1475583)  
Classic 1050



**Smoked oak 3-strip**  
fine-grained texture  
0V-groove (1475594)  
Classic 1050



**Walnut limed 3-strip**  
matt-finish texture  
0V-groove (1475592)  
Classic 1050

## Wide planks



**Maple wide plank**  
wood texture  
4V-groove (1475614)  
Classic 1050



**Beech wide plank**  
wood texture  
4V-groove (1475605)  
Classic 1050



**Oak old oiled wide plank**  
brushed texture  
2V-groove (1475613), 4V-groove (1475599)  
Classic 1050



**Oak Art déco vanilla wide plank**  
rustic texture  
4V-groove (1517686)  
Classic 1050



**Oak Bohemia light wide plank**  
relief texture  
0V-groove (1517648), 4V-groove (1517687)  
Classic 1050



**Oak Century natural wide plank**  
vintage texture  
0V-groove (1517681), 4V-groove (1517690)  
Classic 1050



**Oak Country wide plank**  
rustic texture  
4V-groove (1475607)  
Classic 1050



**Oak dark-limed wide plank**  
brushed texture  
0V-groove (1518082), 4V-groove (1475601)  
Classic 1050



**Oak bleached wide plank**  
brushed texture  
4V-groove (1475602)  
Classic 1050



## Wide planks



**Oak limed wide plank**  
authentic texture  
0V-groove (1475589)  
Classic 1050



**Oak smoked wide plank**  
brushed texture  
2V-groove (1475619), 4V-groove (1475603)  
Classic 1050



**Oak smoked white oiled wide plank**  
brushed texture  
2V-groove (1475615), 4V-groove (1475596)  
Classic 1050



**Oak sawn natural oil finish wide plank**  
rough-sawn texture  
2V-groove (1517693)  
Classic 1050



**Oak sanded wide plank**  
matt-finish texture  
4V-groove (1475604)  
Classic 1050



**Oak graphite-white wide plank**  
brushed texture  
4V-groove (1517685)  
Classic 1050



**Oak Heritage natural wide plank**  
rustic texture  
4V-groove (1517688)  
Classic 1050



**Oak light-grey wide plank**  
matt-finish texture  
2V-groove (1475612), 4V-groove (1475597)  
Classic 1050



**Oak Monterey light-whitewashed wide plank**  
matt-finish texture  
0V-groove (1517647), 4V-groove (1517684)  
Classic 1050

## Wide planks



**Oak natural wide plank**  
authentic texture  
0V-groove (1475585), 4V-groove (1475609)  
Classic 1050



**Oak rustic wide plank**  
brushed texture  
0V-groove (1474073)  
Classic 1050



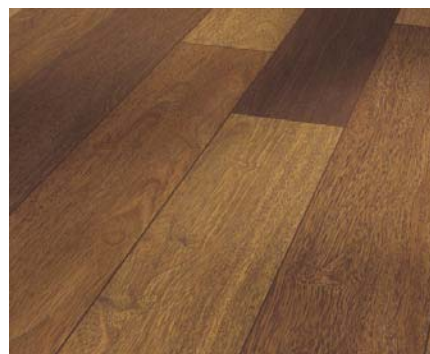
**Oak Tradition grey-beige wide plank**  
elegant texture  
0V-groove (1517683), 4V-groove (1517691)  
Classic 1050



**Oak Tradition light-limed wide plank**  
elegant texture  
0V-groove (1517682), 2V-groove (1517692)  
Classic 1050



**Oak greyed wide plank**  
brushed texture  
4V-groove (1475600)  
Classic 1050



**Merbau wide plank**  
wood texture  
4V-groove (1475611)  
Classic 1050



**Pine rough-sawn wide plank**  
rough-sawn texture  
2V-groove (1475606)  
Classic 1050



**Walnut natural wide plank**  
relief texture  
4V-groove (1517689)  
Classic 1050



**Wild cherry light wide plank**  
brushed texture  
0V-groove (1517576)  
Classic 1050

## Individual plank look



**Oak crosscut limed**  
satin finish  
0V-groove (1475582)  
Classic 1050



**Oak crosscut smoked**  
Minipearl texture  
0V-groove (1475590)  
Classic 1050



**Oak crosscut natural**  
satin finish  
0V-groove (1518083)  
Classic 1050



**Oak Mix**  
matt-finish texture  
0V-groove (1518084)  
Classic 1050



**Oak Mix light-grey**  
matt-finish texture  
0V-groove (1474074)  
Classic 1050



**Oak Mix Newport**  
relief texture  
0V-groove (1517649)  
Classic 1050



# Laminate flooring Trendtime



Oak Century soaped  
vintage texture

Trendtime 1





# Laminate flooring Trendtime

## Trendtime 1



**Banana Abaca**  
matt-finish texture  
4V-groove (1473906)  
Trendtime 1



**Oak Century antique**  
vintage texture  
mini 4V-groove (1473914)  
Trendtime 1



**Oak Century soaped**  
vintage texture mini 2V-groove (1473912),  
mini 4V-groove (1473910)  
Trendtime 1



**Oak Goldpore**  
wood texture  
mini 4V-groove (1473917)  
Trendtime 1



**Oak Tradition limed**  
elegant texture  
mini 4V-groove (1473919)  
Trendtime 1



**Oak Tradition natural**  
elegant texture mini 2V-groove (1473920),  
mini 4V-groove (1473918)  
Trendtime 1



**Ash aged natural**  
rustic texture  
4V-groove (1473903)  
Trendtime 1



**Globetrotter urban nature**  
rustic texture  
mini 4V-groove (1473921)  
Trendtime 1



**Thermo Oak**  
fine-grained texture  
mini 4V-groove (1473915)  
Trendtime 1



## Trendtime 1 / Trendtime 2



**Walnut**  
wood texture  
4V-groove (1473907)  
Trendtime 1



**Oak Century antique**  
vintage texture  
mini 4V-groove (1473962)  
Trendtime 2



**Oak Tradition natural**  
elegant texture  
mini 4V-groove (1473963)  
Trendtime 2



**Ash contrast**  
matt-finish texture  
4V-groove (1473830)  
Trendtime 2



**Letters black**  
Minipearl texture  
4V-groove (1473961)  
Trendtime 2



**Thermo Oak**  
fine-grained texture  
mini 4V-groove (1473964)  
Trendtime 2



**Walnut**  
wood texture  
4V-groove (1473829)  
Trendtime 2



**Wine & Fruits**  
rustic texture  
4V-groove (1473922)  
Trendtime 2



**Wine & Fruits black**  
rustic texture  
4V-groove (1473828)  
Trendtime 2

## Trendtime 2 / Trendtime 4



**Wine & Fruits white**  
rustic texture  
4V-groove (1473827)  
**Trendtime 2**



**Concrete**  
stone texture  
4V-groove (1174127)  
**Trendtime 4**



**Birch Multiplex**  
satin finish  
4V-groove (1174123)  
**Trendtime 4**



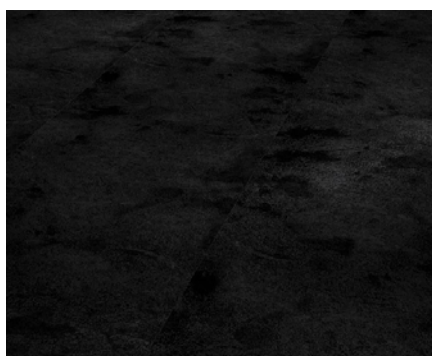
**Castello**  
Minipearl texture  
mini 4V-groove (1473977)  
**Trendtime 4**



**Oak Louvre limed**  
matt-finish texture  
mini 4V-groove (1473972)  
**Trendtime 4**



**Oak Maritim natural**  
satin finish  
mini 4V-groove (1473973)  
**Trendtime 4**



**Painted black**  
marbled texture  
mini 4V-groove (1254822)  
**Trendtime 4**



**Painted white**  
marbled texture  
mini 4V-groove (1254821)  
**Trendtime 4**



**Patchwork**  
Minipearl texture  
mini 4V-groove (1473974)  
**Trendtime 4**



## Trendtime 4 / Trendtime 5



**Rodeo**  
Minipearl texture  
mini 4V-groove (1473975)  
Trendtime 4



**Crude steel**  
satin finish  
4V-groove (1174126)  
Trendtime 4



**Scientific**  
Minipearl texture  
mini 4V-groove (1473976)  
Trendtime 4



**Plain white**  
gloss texture  
mini 4V-groove (1254823)  
Trendtime 4



**Ferrostone**  
stone texture  
4V-groove (1473980)  
Trendtime 5



**Limestone beige**  
stone texture  
mini 4V-groove (1473981)  
Trendtime 5



**Modern Onyx**  
stone texture  
4V-groove (1473979)  
Trendtime 5



**Sandstone ecru**  
stone texture  
mini 4V-groove (1473984)  
Trendtime 5



**Slate agate-grey**  
stone texture  
mini 4V-groove (1473982)  
Trendtime 5



## Trendtime 5 / Trendtime 6



**Zinc 30**  
satin finish  
mini 4V-groove (1473978)  
**Trendtime 5**



**Timber**  
rough-sawn texture  
4V-groove (1473988)  
**Trendtime 6**



**Oak blockhouse**  
rough-sawn texture  
4V-groove (1473991)  
**Trendtime 6**



**Oak barrique**  
matt-finish texture  
4V-groove (1254824)  
**Trendtime 6**



**Oak Castell limed**  
brushed texture 2V-groove (1371178),  
4V-groove (1371173)  
**Trendtime 6**



**Oak Castell smoked**  
brushed texture  
4V-groove (1371174)  
**Trendtime 6**



**Oak Castell white varnished**  
brushed texture  
4V-groove (1473985)  
**Trendtime 6**



**Oak Chalet antique**  
brushed texture 2V-groove (1473990),  
4V-groove (1473989)  
**Trendtime 6**



**Oak Chalet naturally light**  
brushed texture 2V-groove (1473987),  
4V-groove (1473986)  
**Trendtime 6**

## Trendtime 6 / Trendtime 8



**Oak cognac**  
matt-finish texture  
4V-groove (1254825)  
Trendtime 6



**Oak light-grey**  
matt-finish texture 2V-groove (1357368),  
4V-groove (1357370)  
Trendtime 6



**Oak patina white**  
matt-finish texture  
4V-groove (1254827)  
Trendtime 6



**Oak sand**  
matt-finish texture 2V-groove (1298163),  
4V-groove (1298164)  
Trendtime 6



**Oak silver-grey**  
matt-finish texture  
4V-groove (1298166)  
Trendtime 6



**Lumberjack oak**  
rough-sawn texture 2V-groove (1371177),  
4V-groove (1371172)  
Trendtime 6



**Walnut Loft**  
matt-finish texture  
4V-groove (1254828)  
Trendtime 6



**Oak Versailles antique limed**  
satin finish  
mini 2V-groove (1474077)  
Trendtime 8



**Oak Versailles natural**  
satin finish  
mini 2V-groove (1474076)  
Trendtime 8

# Laminate flooring Quality with system



## Product features



### Edge swell protection

Swell-resistant core boards and all-round edge impregnation ensure reliable edge swell protection.



### Safe-Lock®

The patented click mechanism with Safe-Lock® profile allows the planks to easily click in, thus enabling them to be joined together quickly and easily.



### Micro-scratch resistance

A thoroughly robust finish protects against damage and ensures a positive home feeling.



### Suitable for underfloor heating

Parador laminate floors can be combined with hot water underfloor heating systems without hesitation, thus reducing heating costs.



### Increased antistatic

The excellent conductivity significantly reduces the risk of electrostatic charge from the floor.

## Underlays

### Uno-Protect



The highly resilient underlay for all dry substrates.

- › Can be used on wood planks, particle boards, PVC floors, linoleum floors etc.
- › High compressive strength and dimensional stability up to 20,000 kg/m<sup>2</sup>
- › Impregnated against mould infestation.
- › Not a moisture barrier

### Duo-Protect



The 2-in-1 underlay with moisture protection and impact noise insulation combined.

- › Especially for new buildings: dual damp and moisture protection against residual moisture in concrete, screed and tiles.
- › High compressive strength and dimensional stability up to 20,000 kg/m<sup>2</sup>
- › Impregnated against mould infestation.

### Plan-Protect



The practical impact noise underlay made of natural wood fibres.

- › Can be used on wood planks, particle boards, PVC floors, linoleum floors etc.
- › Optimal levelling of slight uneven patches in the floor combined with high compressive strength
- › A purely natural product made of wood fibres

### Akustik-Protect 100



The high-tech acoustic mat offering ambient noise and impact noise insulation.

- › Specially designed for use under floating laminate flooring, engineered wood and solid wood flooring
- › Optimal impact noise insulation - no additional impact noise protection necessary.
- › Aluminium-covered reverse side for improved moisture protection from underneath
- › Damp and moisture protection

### Akustik-Protect 200



The high-tech acoustic mat offering ambient noise and impact noise insulation.

- › Specially designed for use under floating laminate flooring, engineered wood and solid wood flooring
- › Optimal impact noise insulation - no additional impact noise protection necessary.
- › Without a moisture barrier
- › Not on mineral substrates

### Akustik-Protect 300



The high-tech acoustic mat.

- › Specially designed for use under floating laminate flooring, engineered wood and solid wood flooring
- › Includes aluminium adhesive strip to seal the joints between strips
- › Aluminium-covered reverse side for improved moisture protection from underneath

## Assortment at a glance

Style	
Assortment	
Appearance	Designs
	Surfaces
	Plank style
	1 Wide plank 2 2-strip 3 3-strip 4 Individual plank look 5 Tile look 6 Longstrip 7 Strip 8 Oversize format 9 Chateau plank 10 Narrow oversize format
Joint pattern	Planks fit together without a noticeable connection; closed overall impression
	Long edges for an authentic character and optical depth.
	Long and end edge create the appearance of a genuine wooden floor
Quality	Guarantee
	Guarantee period for home use
	Guarantee period for commercial use
	Wear class
	Wear class for domestic use
	Wear class for commercial use
Technology	
Format	
Plank thickness	
Edge swelling protection	All-round edge impregnation for reliable swell protection
Micro-scratch resistance	The surface is particularly resistant to scratches
Antistatic	Increased conductivity reduces electrostatic charge
Safe Lock®	Click mechanism for easy and safe installation
Underfloor heating system	Suitable for installation on underfloor heating

## Basic The entry-level floor

Timeless				
Basic 200	Basic 400	Basic 500	Basic 600	
7 Designs	14 Designs	5 Designs	5 Designs	
2 Textures	2 Textures	2 Textures	2 Textures	
 1 2 3	 1 2 3	 5	 1	
✓	✓			
	✓	✓	✓	
12 years	12 years	12 years	12 years	
Wear class 23	Wear class 23	Wear class 23	Wear class 23	
Wear class 31	Wear class 32	Wear class 32	Wear class 32	
1285 × 194 mm	1285 × 194 mm	638 × 330 mm	2200 × 194 mm	
7 mm	8 mm	8 mm	8 mm	
✓	✓	✓	✓	
✓	✓	✓	✓	
✓	✓	✓	✓	

### Further information



Appearance



Quality



Technology



Underlays



Skirtings



Accessories



FAQs

Classic  
The classic floor

Classic, elegant

Classic 1050

60 Designs

15 Textures



✓

✓

✓

25 years

5 years

Wear class 23

Wear class 32

1285 × 194mm

8mm

✓

✓

✓

✓

✓

Trendtime  
The sophisticated floor

Modern, fashion-conscious, design-oriented

Trendtime 1

12 Designs

6 Textures



✓

✓

25 years

5 years

Wear class 23

Wear class 32

1285 × 158mm

8mm

✓

✓

✓

✓

✓

Trendtime 2

9 Designs

7 Textures



✓

✓

25 years

5 years

Wear class 23

Wear class 32

850 × 95mm

8mm

✓

✓

✓

✓

✓

Trendtime 4

12 Designs

6 Textures



✓

✓

25 years

5 years

Wear class 23

Wear class 32

1285 × 400mm

8mm

✓

✓

✓

✓

✓

Trendtime 5

6 Designs

2 Textures



✓

✓

25 years

5 years

Wear class 23

Wear class 32

638 × 330mm

8mm

✓

✓

✓

✓

✓

Trendtime 6

21 Designs

3 Textures



✓

✓

25 years

5 years

Wear class 23

Wear class 32

2200 × 243mm

9mm

✓

✓

✓

✓

✓

Trendtime 8

2 Designs

1 Texture



✓

✓

25 years

5 years

Wear class 23

Wear class 32

1285 × 330mm

8mm

✓

✓

✓

✓

✓



## Joint design

Besides the decor and plank format, the installation pattern and surface texture, the joint pattern also significantly determines the characteristic look of the floor. Whilst a jointless installation creates a calm, closed impression, an installation with joints underlines the individual character of the planks. With a choice between various joint patterns, Parador laminate flooring further extends the scope to create individual designs.

### Without joints



With the classic jointless installation, the planks are joined together without noticeable gaps. This creates an overall closed impression and a calm, harmonious pattern.



### 2V-groove/mini 2V-groove



The bevelled long edges underline the generous length effect of the planks and their authentic impression. They heighten the vividness and increase the optical depth in the room.



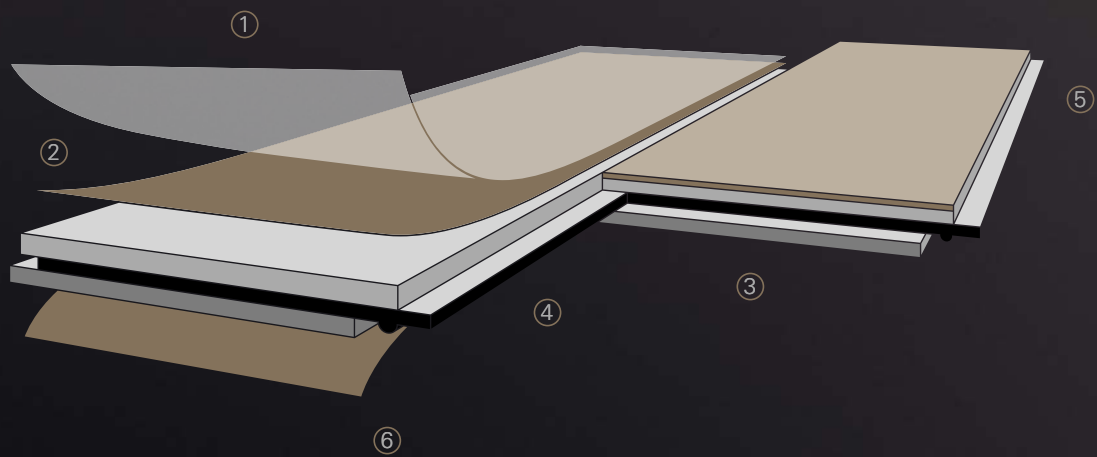
### 4V-groove/mini 4V-groove



The all-round bevelled long and end edges result in an installation pattern with the charm and elegance of a real wood floor, as each single plank is emphasised.



## Product composition



① Highly wear resistant top layer made of melamine resin overlay

② Decor layer printed with elaborately reproduced decors

③ Special swell-resistant core board

④ Patented click mechanism

⑤ Renovation-friendly due to low installation height

⑥ Moisture-repellent reverse side



 Parador

Laminate flooring

# More than a surface

Authentic texture

Design texture

Nothing fascinates us more than the perfect imitation of natural materials. Parador surface designs create amazing results; seductively tactile with genuine looks in extraordinary quality – whether imitating wood or other classics such as stone or concrete.

Elegant texture

Brushed texture

Flamed texture

Gloss texture

Wood texture

Marbled texture

Satin finish



Genuine embossed

Rustic texture

Rough-sawn texture

Matt-finish texture

Stone texture

Vintage texture

Brilliant texture

Minipearl texture

Relief texture

Fine-grained texture



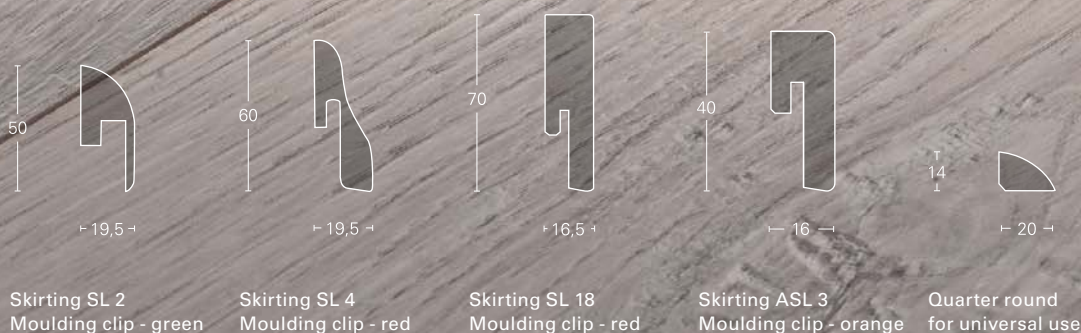
# Perfect finish

From A as in Afzelia to Z as in Zebrano, Parador stocks a wide range of matching skirtings for every laminate decor. Alternatively, the special colours, stainless steel, white and black as well as the Hamburg skirting allow you to make a conscious statement and create an individual design.

No matter which format you opt for: all skirtings with a high quality HDF core are suitable for damp rooms, are fully encased at edges and feature an excellent surface quality. What is more, the mouldings are easy to fasten and assemble using the practical clip technology. The moulding clips with a cable routing depth of 5 mm or 10 mm are ideally suited for covered cable installation.

End caps plus interior and exterior corners in various looks round off the Parador range.

Skirtings cross-section



Please also bear in mind the rest of the comprehensive range of accessories:

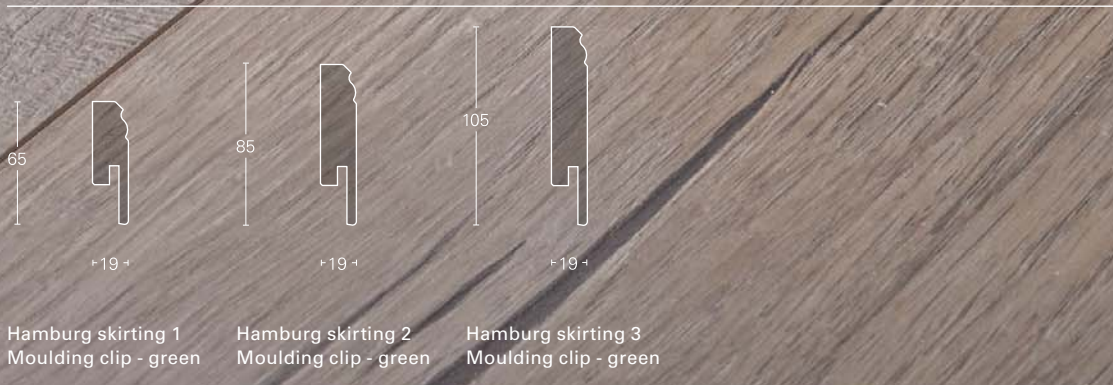


Skirtings



Accessories







# The magazine from Parador!

›FLOOR‹ reports about people who have found their most beautiful house in the world, where they base their life and home. Over more than 100 pages you will find reports and photos about very special floors, photographed with an eye for those genuine moments and elaborately prepared – exciting, fascinating and exclusive.



Order now at: [www.parador.de](http://www.parador.de) or from your Parador dealer



2014

# FLOOR

THE MAGAZINE FROM **PARADOR**

living performance

# Setting standards. Practising responsibility.

As a traditional wood processing company, we are aware of our particular responsibility for the environment and towards handling natural resources in a sustainable manner. Active reforestation and innovative product chains characterise the production at Parador. With our expertise, we are also able to offer decor papers made completely of recycled materials – or from timbers from sustainable forestry programmes. Our products are regularly tested by independent institutes for their environmental impact and have been found to be good. In order to meet our high ecological and quality standards, we only develop and produce them in Germany. In this way we ensure that Parador laminate floors not only meet our quality and sustainability claims all along the line, but in terms of work conditions too, Parador produces in a fair and just manner.

Parador also supports the Plant-for-the-Planet initiative, which sends a signal for climate justice worldwide through tree-planting actions. Parador sponsors the numerous children's academies, where young participants are trained to become ambassadors for climate protection.



Institut Bauen  
und Umwelt e.V.  
Gemeinsam mit dem EPLF  
engagiert sich Parador für mehr  
Nachhaltigkeit im Bauwesen.  
**EPD-ELF-2009111-E**







You can find more information about us, our standard of quality and design and about our assortments on the Internet under: [www.parador.de](http://www.parador.de). If you have any questions, we are happy to help you or you can contact one of our many Parador dealers. We also welcome every visit to our Facebook page [www.facebook.com/parador](http://www.facebook.com/parador).

Laminate flooring

Eco Balance Laminate Flooring

Vinyl

Eco Balance PUR

Engineered Wood Flooring

Engineered Wood Flooring Eco Balance

ClickTex

ClickBoard

Wall and ceiling panels

Parador GmbH & Co. KG  
Millenkamp 7-8  
48653 Coesfeld  
Germany

Hotline +49 (0)2541 736 678  
[info@parador.de](mailto:info@parador.de)  
[www.parador.de](http://www.parador.de)  
[www.facebook.com/parador](http://www.facebook.com/parador)

As at: 01/2014 © Parador  
Errors and changes excepted  
Media code: 1530490

