



TARMEKO

NORDIC LUXURY



关于我们

Tarmeko是一家欧洲家具制造商，坐落于爱沙尼亚，始建于1947年。爱沙尼亚的自然美景和绿色景观享有盛誉，森林覆盖率达50%。。

ABOUT THE COMPANY

TARMEKO - European furniture manufacturer since 1947 - is located in Estonia. The country is well known for its beautiful nature and green landscape - about 50% of the land is covered with natural forest.



木材是一种古老而神奇的材料，我们的祖先就非常珍视木材的坚韧、保暖性与多样性。
创建60多年来，Tarmeko始终坚持木材设计的理念，将工匠全身心投入打造的的技艺世代传承，以此来追求更高的水平。



The mark of
responsible forestry

Wood is ancient and magical material - already our ancestors valued its strength, warmth and diversity.

Over the 60 years of existence Tarmeko's idea has been to carry the concept of wood design step by step to a higher level by passing from one generation to the other the craftsmanship of our dedicated artisans.

质量和工艺是我们的价值所在。我们只用最好的材料，追求每个细节的完美，让每件作品都能传递给客户至尊的享受。

Quality and handcraft is what we value. By using only the best materials we seek perfection in each detail thus giving unique identity to every item we make.



Tarmeko家具几乎都是全木制造，采用欧洲较为传统的桦木、榉木、橡木材料打造，因其在几个世纪的荏苒中仍保持产品质量和品质如一，使得Tarmeko始终独一无二。

Tarmeko's furniture has always been made out of wood. Birch, beech or oak furniture can be found in almost every home in Europe. It is valued because it can last for centuries, maintaining its quality and fine look.



通过设计和技术的不断发展，我们的品牌受到欧洲消费者普遍的认可和欢迎，创建家具外观和形式的永恒性，结合自然木材和其他自然材料如皮革和织物，为人们创造奢华的家具和享受。

By adding value through constant development in design and technologies we have created several brands which carry the concept of timeless shapes and forms.

We unite natural wood and other natural materials like leather and fabric and produce luxurious pieces of furniture for people to indulge and enjoy.



历史

Tarmeko集团是一家专业从事木材处理和家具制作的传统企业，集团生产和管理部门都坐落在爱沙尼亚塔图市。

Tarmeko始建于1947年，公司名字TARMEKO包含了三个重要的词：公司所在地址—TARTU；森林的爱沙尼亚语—METS；工厂的爱沙尼亚语—KOMBINAAT。这就是我们名字的来源。

HISTORY

Tarmeko enterprises are specialised in wood processing and furniture manufacturing. Both, production and management have always been located in Northern Europe, in Estonia.

The company originates from the year 1947. The company name TARMEKO withholds three important words: the location of the company in Estonia - the city of TARTU; the word "forest" - in Estonian METS; and the word "factory" - in Estonian KOMBINAAT. This is how our company got its name.



Tarmeko是一个家族企业，父亲和他的两个儿子从小就在工厂里工作并传承经营，现在他们都是受到高度尊重的企业家。

Tarmeko is a family owned company. The father and his two sons have been working in the factory and run the company since their early childhood. Today they all are highly respected businessmen.



The owner family members, brothers Jaak Nigul and Ago Nigul

多年来，Tarmeko一直是爱沙尼亚领先的家具制造商，获得过很多荣誉奖项。

TARMEKO has been among the top furniture producers in Estonia and has been given many prestigious awards.

多年的专注让Tarmeko在产品生产和技术方面取得了许多创新。


Over the years, TARMEKO has made many innovative changes in the production and technology.



我们的目标是基于长时间的经验和创新性的设计，创造一种永恒的形式与造型。

现如今我们是世界上少数同时涵盖以下业务的家具企业之一。

- --生产压缩成型和分层胶粘的桦木家具
- --生产以现代技术设计的奢华沙发

 Our vision is to create comfort in a timeless shape and form, based on long experience and innovative designs. Today we are one of the few companies in Europe, who produce

- form pressed and layer glued furniture in birch veneer
- luxurious sofa designs in modernized techniques





QUALITY AND SAFETY

我们非常关注环境保护和原材料质量。

我们支持通过使用环境友好型材料减少人类的生态足迹。Tarmeko的所有产品只采用符合生态环境要求且通过FSC® C116426认证监管的木材进行生产。

我们的质量控制系统会对内部控制程序进行监管，出厂前我们会对产品的机械保险装置进行检测，并在包装前全面检查以保证产品质量。

We are very concerned about the environmental protection and quality of materials.

We support the reduction of humanity's ecological footprint by using environmentally friendly materials. We are linked to the FSC © C116426 Chain of Custody and we buy our wood from sustainable resources.

Tarmeko gives up to 20-year-warranty to the products.

Our quality control system regulates the internal control procedure. We test our furniture for mechanical safety and examine the products before packaging and delivery.

伟大的品牌往往都知道一个秘密。他们知道品牌建设并不是关于企业想要表达什么，而是市场想要听到什么、想说什么、想买什么。

Great brands know a secret. They know it isn't about what a company wants to say. It's about what the market wants to hear about, talk about, and buy.

TARMEKO 奢华系列：

TARMEKO *Luxury Design*



Carl Fredrik建于1998年，意在将奢华产品从高质量标准化产品中区分出来。

该系列产品传达出我们对生产高质量沙发的激情，这些产品不仅尊重传统，而且保护环境，将我们所需的生产元素表达的淋漓尽致。我们的产品是纯手工制作，而且所用材料全部都是能减少制造业生态足迹的优质材料。

Carl Fredrik brand was established in 1998, where TARMEKO decided to distinguish the luxurious and high quality products out of the standard sofa production.

Carl Fredrik products reflect our passion for quality furniture that respects tradition and cares for the environment. To share this passion, Carl Fredrik products come fully hand-made and include only premium materials that are selected with a view to minimizing the ecological footprint of our manufacturing process.

Carl Fredrik系列家具带给喜欢奢华生活方式的人以温暖，极端舒适体验和高质量的设计。

为保证产品的持久耐用，我们怀着爱和敬畏的心，在木材中挑选质量最好的北欧硬木，来生产我们的产品框架。

我们是森林管理委员会（FSC）监管链的成员，这使得我们能够追踪到我们所用木材最初始的来源。

我们生产的每件产品和每个框架都有一个独特的系列编号，我们为Tarmeko产品提供20年的品质保证。为保证产品的安全性能，软体家具系列只选用欧标认证的安全阻燃材料进行填充，产品所用面料和皮革选购于欧洲知名品牌。

Carl Fredrik carries under its name the furniture items addressed to people who like luxurious lifestyle surrounded with warmth, extreme comfort and high quality designs.

To ensure the durability of our products, we build the frames exclusively of Nordic hardwood, selected and harvested with love and respect.

We are part of the Forest Stewardship Council Chain of Custody system which permits us to track our timber back to the tree that it was cut from.

We take pride in our furniture and tag each and every frame we make with a unique serial number. As a result, our frames carry a 20-year guarantee against faulty workmanship. To make our products safe, our upholstery only uses foam filling certified as flame retardant. Our fabrics and leather come from various European brands.



Chesterfield Classic

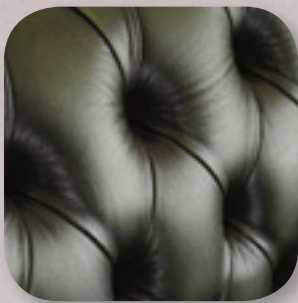
皮革颜色
Leather colours:



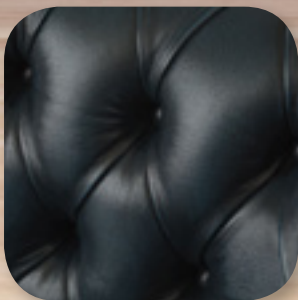
深棕
Rub-off brown



酒红
Rub-off red



墨绿
Rub-off green



靛蓝
Rub-off blue







CHESTERFIELD CLASSIC



CHESTERFIELD CLASSIC 2-SEATER



CHESTERFIELD CLASSIC 3-SEATER



Chesterfield Winston



**CHESTERFIELD WINSTON
3-SEATER**

三座沙发
颜色可定制

Leather colours:
from white to black



**CHESTERFIELD YORK
WITH OTTOMAN**

弹簧的奥秘

自19世纪Tarmeko创建伊始，弹簧就广泛应用于软体家具中。那时的弹簧主要是单锥弹簧以及双锥弹簧，长度分别有3、3.5、4毫米，弯折四到八处，高90到335毫米。弹簧表面覆有锌、青铜、铜等材料，以强化其抗腐蚀性能。

现代家具一般选用多种形态弹簧组合代替单一结构弹簧支撑，一般采用双锥弹簧，呈螺旋状连接以保证稳固性，Tarmeko希望沙发不仅仅是一个功能性的休息空间，也是对至臻舒适的追求，我们希望通过多年的技艺积累，在工业化生产的今天重新带给客户诚意和感动。

Harrow海罗系列沙发沿袭19世纪传统技术，严格遵守弹簧一对一连接、纯手工制作的传统。如此，沙发就获得了与众不同的舒适度，带来超出您想象的愉悦体验。在切身体验欧洲工匠的百年技艺成就的舒适安逸之外，您还将获得无与伦比的享受体验，及时令您迫不及待的与家人及朋友分享。

THE SECRET OF SPRINGS

The use of springs in upholstery work dates back to the beginning of the 19th century. The first springs were mainly single-cone and double-cone spirals, made of 3, 3.5 and 4 mm wire with 4 to 8 turns, rising to a height of 90 to 335 mm. The springs were covered with a zinc, bronze or copper coating to improve corrosion resistance.

Most contemporary upholstered furniture makers now employ various types of sprung units—the use of single springs has been almost universally discontinued. Knowing from experience the difference of sensation produced by sitting on a sofa whose suspension is provided by hand-linked springs, we decided to recreate that experience for our customers.

The result is the Harrow sofa whose upholstery is manufactured following traditional 19th century methods that require springs to be linked by hand, one by one. This makes sitting on a Harrow a true revelation of comfort. Feel the difference! Once you have, you will be able to spread the word about the luxurious legacy of a great upholstery-making tradition that does not deserve to disappear.



HARROW



ALMA



CARL



MARGIT

TARMEKO 北欧座椅

TARMEKO NORDIC DESIGN

Tarmeko 北欧座椅是多位设计师共同打造的最新产品，桌椅均由天然桦木单板制造。

我们珍视使用天然原木生产家具的工匠传统，同时又加进现代设计感以满足顾客对时尚的追求。

六十余年的经验积累使我们的工匠能够将复杂的木质薄板框架与软装座椅完美结合。

北欧休闲座椅系列会给您带来持久的时尚与优雅与体验，适合温暖舒适的家居软装，也可以用在现代公共空间。

我们是森林管理委员会（FSC）监管链的成员，只用可持续发展的木材资源。

Tarmeko Nordic Design carries various designer chairs and tables in natural laminated birch veneer.

We value the heritage of natural veneer in furniture making and together with Nordic designers create new contemporary expressions to fit modern life.

With over 60 years of experience our craftsmen have obtained the skills to flawlessly combine technically complicated veneered wooden frames and upholstered seats.

We present our collection of timeless elegant and stylish relax chairs which were designed to suit cosy home interiors as well as modern public spaces.

We are linked to the FSC® Chain of Custody and we buy our wood from sustainable resources.



“ A good design can be
the perfect frame for human life.

一个好的设计将是人类生活的完美构架。”

Thomas Leerberg,
Danish designer



SPIDER

对著名的丹麦设计师托马斯里伯格而言，对人、材料以及对传统的尊重是最重要的价值。

他在家具的设计中延续丹麦传统，同时添加现代表达元素使之适应现代生活。

Respect for humans, materials and heritage are the most important values for the well known Danish designer Thomas Leerberg.

Through his furniture design he continues the tradition of Danish design with contemporary expression to fit modern life.



TANGO 1



这个系列产品创意由丹麦设计师托马斯里伯格专门为Tarmeko LPD操刀，因其造型酷似蜘蛛而得名。

The chair is designed for Tarmeko LPD by Thomas Leerberg, a creative Danish designer, who has named the chair after its spider-like shape.

SPIDER 蜘蛛

在欧洲，人们相信房间里的蜘蛛能为居住在里面的人带来好运和财气。

It is believed that a spider in the house can bring good luck and good fortune to the inhabitants.





SPIDER RED



SPIDER WHITE LEATHER



**SPIDER
RODEO ANTIQUE BROWN**

座椅框架的颜色可明可暗，沙发表面的皮革或面料也有多种选择，比如天然羊皮或革或其他面料。您可以将一款椅子变成客厅里的一抹古典的柔和，也可以使用大胆的纹理，使之成为休息室里的一抹亮色。

With the combination of lighter or darker frame colors and different cover materials, such as natural sheepskin or leather or exclusive fabrics, one can do wonders to the appearance of the chair and turn it into a classic soft chair for a living room or add bold texture to the lounge environment.



**SPIDER
BEIGE PEARL**

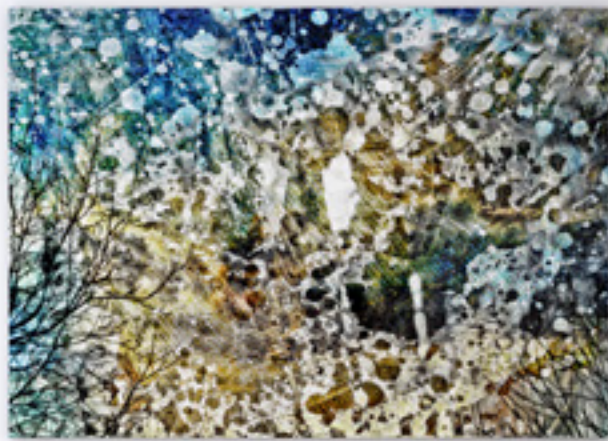
我们支持使用环境友好型原料，以减少人类的生态足迹。

We support the reduction of humanity's ecological footprint by using environmentally friendly materials.



SPIDER
GRAY SHEEP

ZÜRICH



ZÜRICH
BLACK LEATHER



ZÜRICH
TURQUOISE
BLUE



该系列的座椅搭配有一个可调节的颈枕，更加舒适。

The chairs have a soft adjustable neck support, providing extra comfort.



ZÜRICH WHITE SHEEP



ZÜRICH RED RUBIN



ZÜRICH FLOWERY SPRING



每个椅子都配有一个脚凳，闲置时放在椅子下面即可，易于存放



The chair forms a set with a matching footstool. Thanks to a compact structure, the footstool can be stored under the chair.



TANGO 2



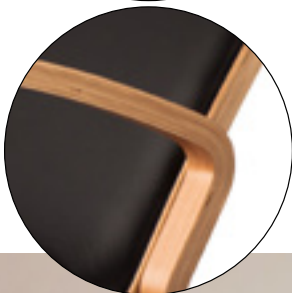
TANGO 3



产品的框架产自桦木、山毛榉或橡木薄板，软体部分使用天然皮革、羊皮或多种可选择的现代面料。



The durable frame comes in birch, beech or oak veneer, upholstered in natural leather, sheepskin or various selections of modern fabrics.



ZÜRICH RED

ZÜRICH
RODEO ANTIQUE BROWN





ZÜRICH GOLDEN BLITZ

特别款!

金色木质框架与蓝色皇室面料的完美结合，快来感受精致设计的奢华吧!

Special edition!

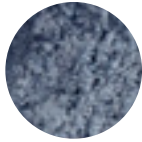
Feel the luxury of exquisite design: golden frame combined with blue royal fabric.



羊皮
SHEEPSKIN



White



Gray



Black



Brown

皮革
LEATHER



White



Black



Brown



Cherry Red

框架
FRAME



Birch

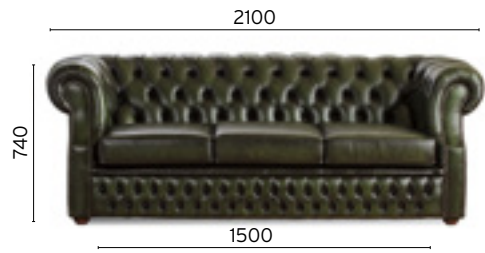
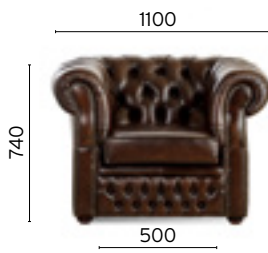


Oak



Beech

CHESTERFIELD



YORK



CARL



ALMA



WINSTON



HARROW



SPIDER



ZÜRICH



MARGIT



TANGO 1

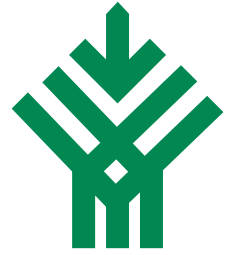


TANGO 2



TANGO 3





TARMEKO

Contact info:
联系信息

Tarmeko LPD OÜ
电话: +372 7 446 705
sales@tarmeko.ee
www.tarmeko.com

Factory address:
工厂地址:

Soojuse Rd 14, Lohkva,
Luunja, Tartumaa 62207
Estonia

Representative in the
People's Republic of China
中国区代表:

ORIENTAS
电话: +86 137 1775 5101
邮件: xiaofei@orientas.eu



Printed by environmentally friendly printinghouse Ecoprint



4041 0799
Printed matter

www.tarmeko.com