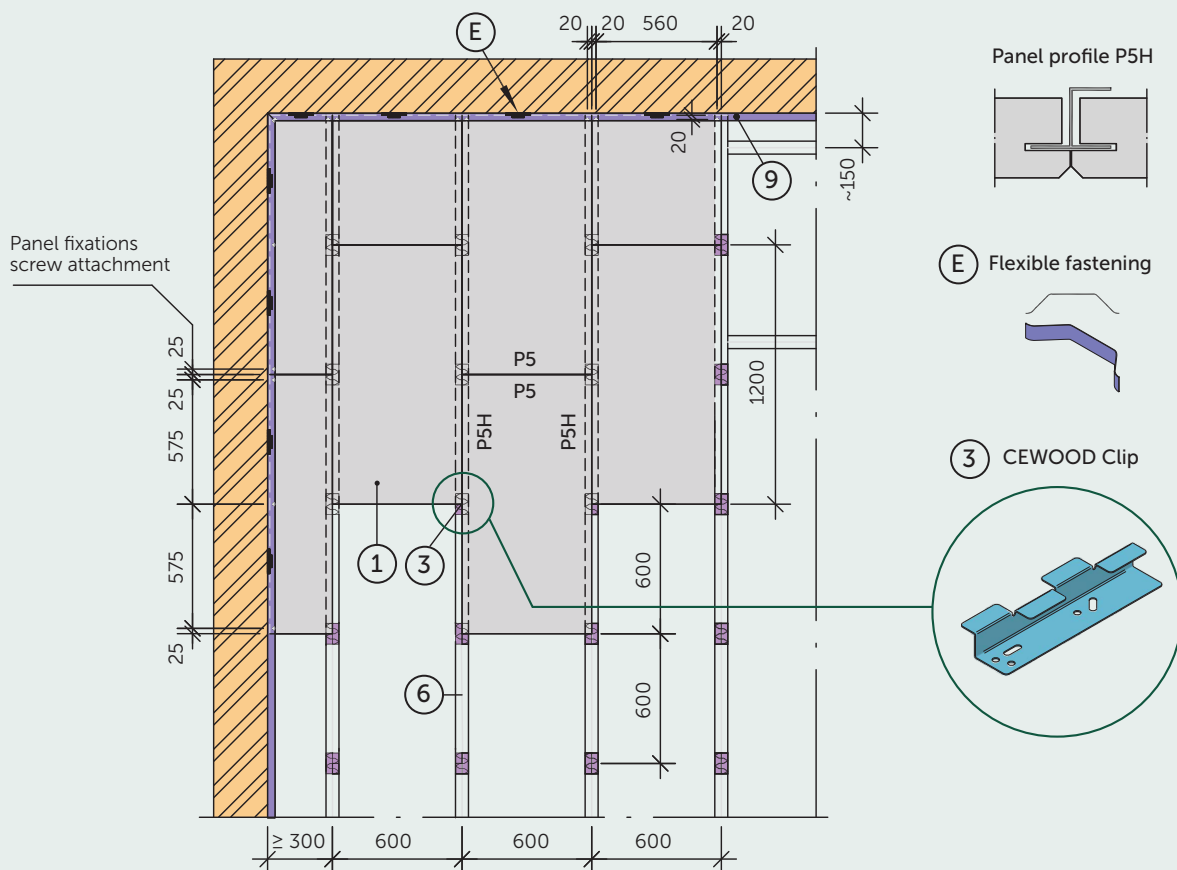


## MOUNTING OF CEWOOD PANELS ON CEWOOD TIN CLIPS

The frame is built from CD profiles 60/27/0.6 arranged perpendicularly to each other or wooden frame. Configure CD profiles, fasten at the load-bearing structures and connect to each other according to manufacturer's instructions.

CEWOOD clips are suitable for mounting 25 mm and 35 mm thick CEWOOD panels. One pack contains 100 clips, provided for installation of about 30 m<sup>2</sup> panel installation.

Each CEWOOD Panel 1200x600 mm is installed on 6 clips, 600x600 panel on 4 clips.  
Panel long sides profile P5H, short side - P5.

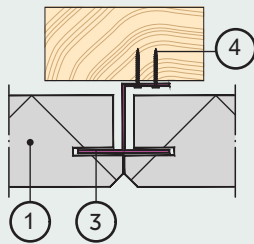


### Explanation of numeration-designations:

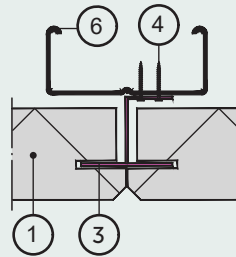
- ① CEWOOD Acoustic panel - 25/35x(600x600; 600x1200).
- ② Assembling screw 4.0 x 25 mm.
- ③ CEWOOD Clip.
- ④ CD profile or wooden lath construction.
- ⑤ Screw plug, wedge anchor – match dimensions to wall structure.
- ⑥ CD profile or wooden lath construction.
- ⑦ Wall profile (fasten along perimeter of walls).
- ⑧ Flexible fastening.

**MOUNTING OF CEWOOD PANELS ON CEWOOD TIN CLIPS**
**Types of fastening on clip**

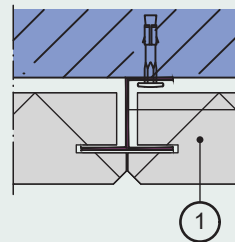
Fastening on wooden laths



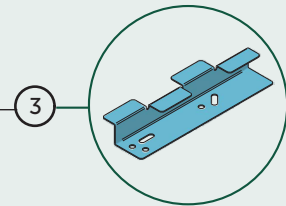
Fastening on CD profiles



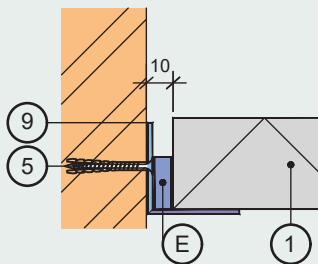
Direct fastening to ceiling



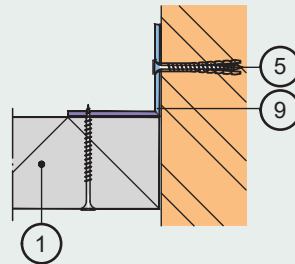
CEWOOD Clip


**Types of fastening along perimeter of wall**

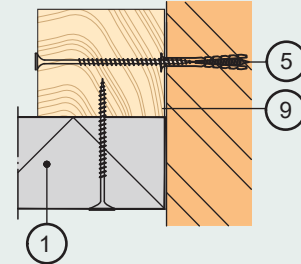
Fastening with perimeter profile



Fastening on wall perimeter



Fastening on wooden lath


**Approximate material consumption per 100 m<sup>2</sup>**

No	Mounting element	Unit	On ceiling 100 m <sup>2</sup> (*)	
			Configuration of profiles 600/600	Configuration of profiles 600/1200
1	CEWOOD Acoustic panel	pc m <sup>2</sup>	308 110.88	154 110.88
3	CEWOOD Clip	pc	270	270
4	Assembling screw 4.0 x 25 mm	pc	540	540
5	Screw plug, wedge anchor – match dimensions to wall structure	pc	75	75
6	CD profile or wooden lath construction	r.m.	164	164
9	Wall profile (fasten along perimeter of walls)	r.m.	45	45

All indicators in the table are shown approximately and without surpluses.  
 (\*) Assumed room for calculation 6100x16400 mm.



You can watch the video tutorial  
 CEWOOD YouTube channel