

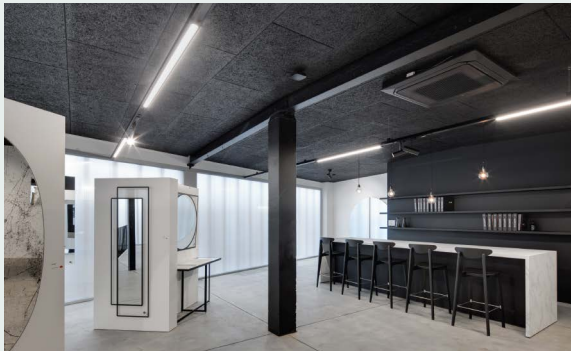
## PRECAUTIONS AND GUIDELINES FOR PANELS IN DARK COLOURS

CEWOOD produces all panels with special care, however, panels that are painted in dark tones must be handled with extra caution. When choosing dark colour tone panels, you must bear in mind that post-treatment will be required to achieve excellent results due to the high contrast with the natural colour of wood wool.

Be aware that the varying thickness of each wood wool fibre gives unique characteristics and depth to the panel. As a natural product, each panel can differ slightly. After coating them with the dark tone, from some angles natural wood wool shades might still remain visible.

Keep in mind that panels which are painted in contrasting colours are almost impossible to transport and mount without damage caused by dust or saw. Dark-coloured panels must always be mounted last, after all the rest of the construction works have been completed. Be prepared that it will require some local repainting with a brush; in larger areas with a spray or roll. We recommend to order same color tones from CEWOOD factory, because it excludes the possibility of colour tone mismatch.

During packaging, CEWOOD will place panels with the exposed surfaces together and separated by a covering foil to protect the wood wool fibre during transportation and storage. Always handle panels in pairs with the exposed surfaces together. Leave the cover foil between panels as long as possible to prevent surface damage to panels.



### ! Precautions:

- Before starting work, get acquainted with CEWOOD guidelines of handling before and after installation;
- Always allow the panels to adapt to ambient conditions for 1-2 weeks;
- Mount the panels last, after all the construction works are finished;
- Do not move panels unnecessarily. CEWOOD recommends moving panels only for acclimatization or installation purposes;
- Lift panels with both hands avoiding any squeezing;
- Handle the panels in pairs keeping the exposed surfaces together and with a covering foil between them;
- Leave the covering foil between panels as long as possible;
- Use clean and dry gloves and equipment while working. Dirt will leave stains;
- Do not expose panels to water;
- Local repainting will be required after mounting. Use brush for small areas, spray or roll for larger areas;
- It is recommended to use original CEWOOD paints for brush up painting on panels, this will allow you to get an identical color tone on the panel;
- After panels are installed, small dust particles may be present, due to the mounting process. To get rid of the dust, use a vacuum cleaner with a soft brush attachment.