

## CEWOOD PLUS PANELS

CEWOOD PLUS panels for acoustic use are manufactured from any CEWOOD Panel combined with layer of mineral wool. Panels are environmentally friendly and natural material, providing easy handiness, excellent sound absorption, better thermal insulation and increased thermal inertia values.

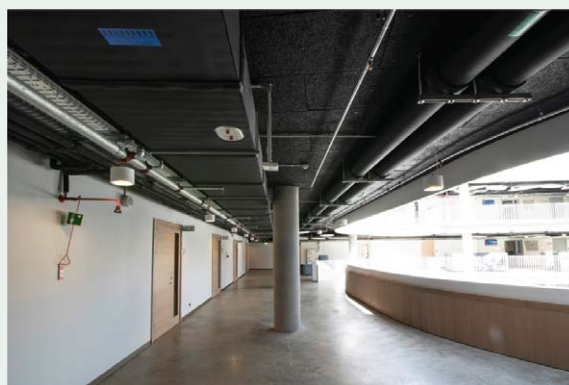
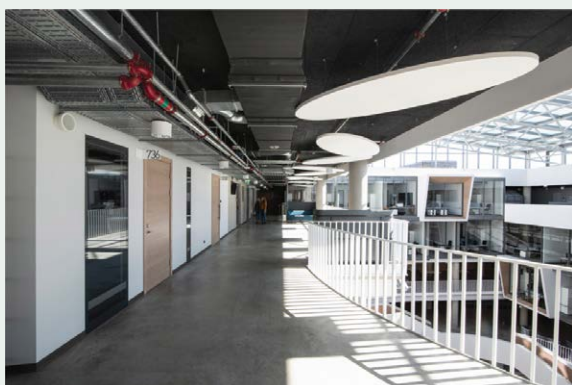
### Application:

- For ceiling and wall covering in offices, administration buildings, schools, kindergartens, events halls, gymnasiums, sports halls, swimming pools and recreation facilities, farms, etc.
- Appropriate for using in not heated premises, space under the roof, basements, underground garage, etc.



### Technical specification

Wood wool width	1,0 or 1,5 mm; other upon request
CEWOOD panel thickness	15 mm; 25 mm; 35 mm
Mineral wool thickness	20 mm; 30 mm; 40 mm; 50 mm; other upon request
Size (standard panel)	600x600 mm; 1200x600 mm
Size (for suspended ceilings)	595x595 mm; 1195x595 mm
Available colours	Natural, natural painted, white, black, grey and any shade in RAL or NCS system upon request
Available edge profiles	P0; P5; other edge profiles upon request
Reaction to fire (EN 13501)	B-s1, d0; A2-s1, d0



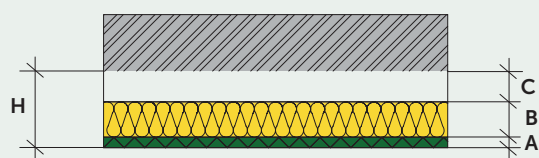
### University of Latvia, The House of Science

CEWOOD panel thickness: 25 mm; Mineral wool thickness: 30 mm; Panel dimensions: 1200 x 600 mm; Wood wool: 1.0 mm; Colour: black.

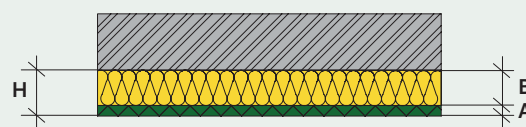
## CEWOOD PLUS PANELS

### Sound absorption values

CEWOOD PLUS panels will significantly lower sound reverberation time, increase acoustic comfort and improve speaker clarity in private and public spaces, such as apartments, private houses, educational institutions, offices, and conference halls. Also employees in technical use premises will benefit highly from reduced sound pressure of production machinery.



With air gap



Without air gap

### Characteristics for most efficient panel options

Description	$\alpha_w$	Class	Height, H (mm)	CEWOOD panel, A (mm)	Mineral wool, B (mm)	Air gap, C (mm)	Frequency					
							125 Hz	250 Hz	500 Hz	1000 Hz	2000 Hz	4000 Hz
CEWOOD Panel 25 mm, mineral wool 40 mm, air gap 85 mm	1,00	A	150	25	40	85	0,45	0,95	1,00	1,00	0,95	1,00
CEWOOD Panel 25 mm, A2, mineral wool 40 mm, air gap 85 mm	1,00	A	150	25	40	85	0,45	0,95	1,00	1,00	0,90	1,00
CEWOOD Panel 25 mm, mineral wool 50 mm, air gap 0 mm	1,00	A	75	25	50	0	0,30	0,85	1,00	0,95	0,95	1,00
CEWOOD Panel 35 mm, mineral wool 20 mm, air gap 100 mm	1,00	A	155	35	20	100	0,35	0,80	1,00	1,00	0,90	1,00
CEWOOD Panel 35 mm, A2, mineral wool 20 mm, air gap 145 mm	1,00	A	200	35	20	145	0,40	0,80	1,00	1,00	0,90	1,00

A2 – reaction to fire class according to EN 13501-1

Note: Other dimensions upon request



CEWOOD PLUS panel: Black painted

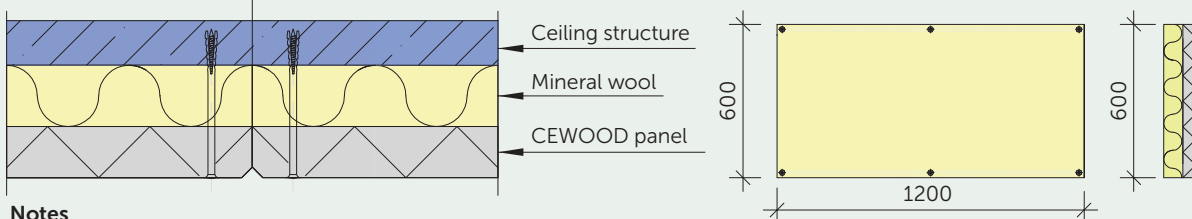


CEWOOD PLUS panel: Grey painted

## CEWOOD PLUS PANELS

### CEWOOD PLUS panels fastened with screws

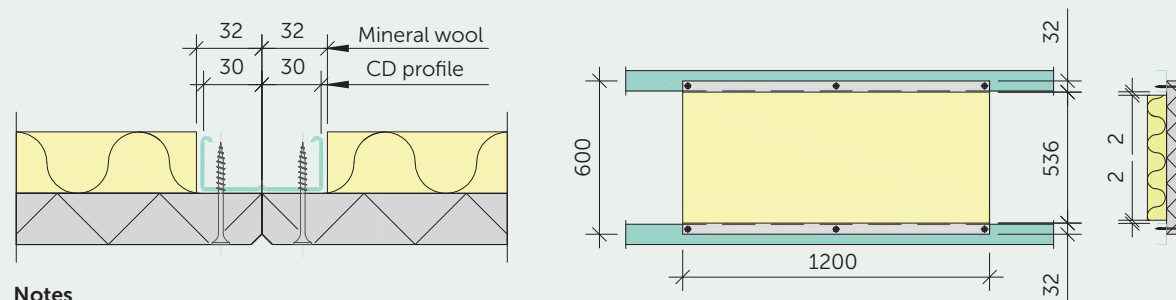
#### 1. Mounted directly to ceiling structure



##### Notes

1. Solution available with any CEWOOD panel thickness combined with any available mineral wool thickness.
2. Mineral wool covers the CEWOOD panel's surface fully.

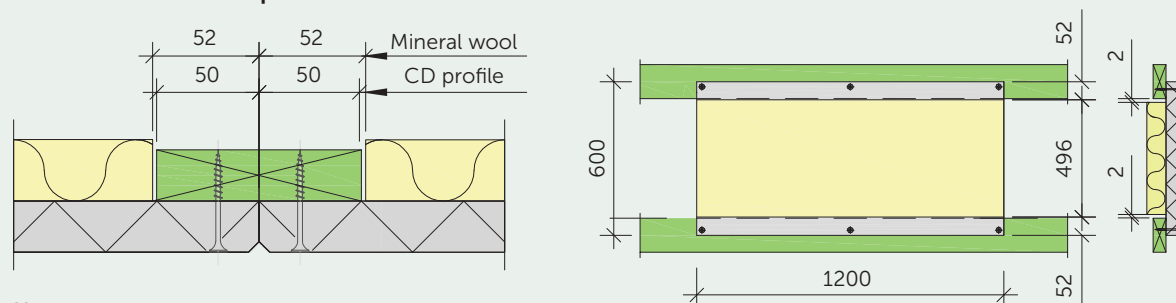
#### 2. Mounted onto a suspended CD metal profile frame



##### Notes

1. Solution available with any CEWOOD panel thickness combined with any available mineral wool thickness.
2. Solution available for P0, P5 and P8 edgeprofiles.
3. For other metal frame profile widths mineral wool offset can be adjusted accordingly.
4. Mineral wool offset is made only along two longest edges.

#### 3. Mounted onto a suspended wooden lath frame



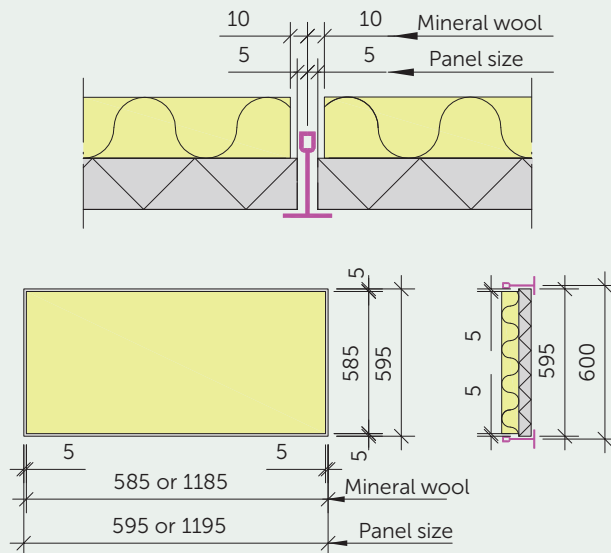
##### Notes

1. Solution available with any CEWOOD panel thickness combined with any available mineral wool thickness.
2. Solution available for P0, P5 and P8 edgeprofiles.
3. For other wooden lath widths mineral wool offset can be adjusted accordingly.
4. Mineral wool offset is made only along two longest edges.

## CEWOOD PLUS PANELS

### CEWOOD PLUS panel suspended in T-Profile frame

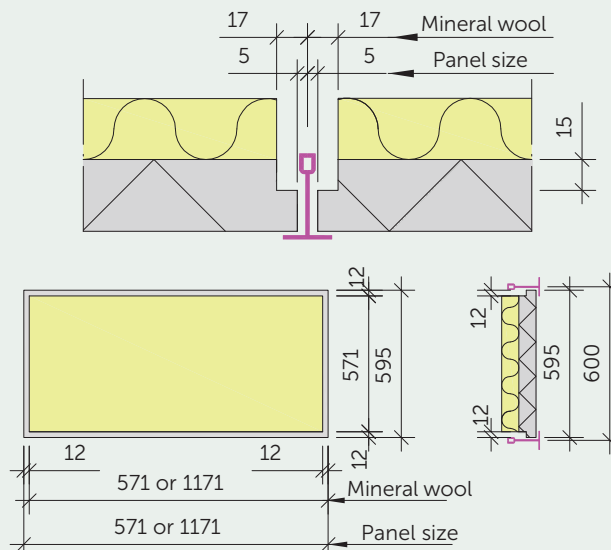
#### 1. CEWOOD panels with up to 25 mm thickness



#### Notes

1. Mineral wool offset is made only along all edges.

#### 2. CEWOOD panel with 35 + mm thickness



#### Notes

1. Mineral wool offset is made only along all edges.