

Installation instructions

June 2015

IMPORTANT!

- Make sure all specifications and instructions are followed carefully.
- This product is for residential indoor usage only.
- Contact your Tarkett representative if you are unsure about any part of the installation.
- This information is subject to change due to continuous improvement.
- Use the same shade number for each continuous surface.
- Store the boxes in small neat piles (max. 5 boxes high) away from direct sunlight, heaters or air vents.
- Let the flooring acclimatize at least 24h before laying at room temperature (minimum 15°C).
- Do not install iD Essential Click under severe conditions (less than 10°C, more than 28°C) and maintain this temperature in the room during the lifetime of the product and limiting as much as possible temperature variation.
- The subfloor must be flat, level, clean (no grease, solvent or chemicals) and free of dust, without marks (no felt pen, marker, oil, etc.), sound, dry, solid, hard, free of cracks, smooth and not exposed to moisture.
- This product is suitable with underfloor heating and cooling systems.
- The work must be completed with an inspection: ensure that the newly laid floor is free from residues.

SUBFLOOR

The subfloor must be level, flat, clean, free from marks (no felt pen, marker of any type, ballpoint pens, paint, etc., that could cause degradation or discoloration due to migration) sound, dry, solid, hard, free of cracks, smooth and not exposed to moisture.

The preparation/dryness of the subfloor and the installation procedures should all be in accordance with the current relevant Standard within the country of use. The dryness of a solid subfloor should be below the maximum moisture level permitted when tested in accordance with that Standard.

E.g. in the UK, the relative humidity of concrete surfaces must be below 75%, and less than 2% with the CCM method. In North America, ASTM F-170 recommends a water-to-cement ratio of 0.40 to 0.45.

Before selecting a smoothing compound, check what type of traffic the floorcovering will be subjected to once installed. Latex smoothing compounds are not suitable for areas that will receive heavy traffic, especially heavy, narrow wheeled traffic (see EN 12529, Castors and wheels). Check levelling compound compatibility, and follow the instructions of the levelling compound manufacturer.

Note: exclusion of liability (adhesives, levelling compounds, etc.)

Although Tarkett may list a selection of adhesive, levelling compound and surface damp-proof membrane manufacturers and types, we do not guarantee the products listed. The list of products and manufacturers is not guaranteed complete or current.

Tarkett will accept no liability for any of these products failing to perform in conjunction with any of its products. It is the responsibility of the adhesive, levelling compound and surface damp-proof membrane manufacturer and flooring contractor to ensure the products being used are appropriate for use and applied in accordance with the manufacturers' recommendations.

CONDITIONS REQUIRED FOR INSTALLATION

It is important to store the planks (or tiles) for at least 24 hours before installation at a minimum room temperature of 15°C /see each country regulations. This temperature should be maintained throughout the installation.

The minimum temperature of the subfloor should be 12°C and room temperature 15°C /see each country regulations. The recommended relative humidity inside the room should be 35-65% /see each country regulations.

Planks (or tiles) should be stored flat in their packages, in small neat piles (max. 5 boxes high).

UNDERFLOOR HEATING

It is imperative that underfloor heating systems have been previously commissioned and found to be functioning correctly before installation of the floorcovering.

Ensure that the underfloor heating system is switched off 48 hours before installation of the floorcovering commences, and remains off for at least 48 hours after installation is completed. While the underfloor heating system is off, an alternative heating source should be provided, if required, to ensure that the installation area is kept at a constant temperature (min 15- max 28°C).

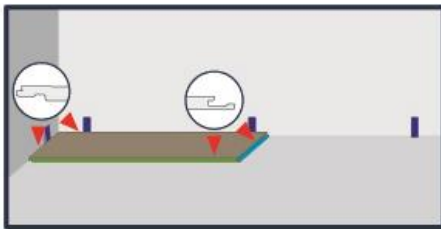
Gradually increase the temperature over a number of days by only a few degrees per day until the desired room temperature is reached. The temperature should never exceed the floorcovering industry's agreed maximum of 27°C on the underside of the floorcovering.

PRODUCT INSTALLATION

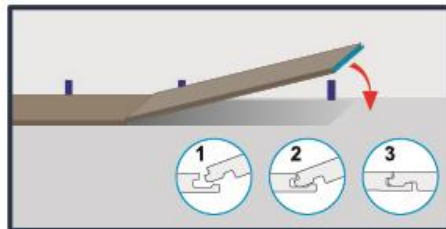
Using a suitable spacer, create an expansion joint at least 5 mm wide along the entire periphery. Also maintain a gap of 5 mm from all fixtures in the room, such as pipes, door frames etc. In principle, this expansion joint must not be filled with silicone, electric cables or other items.

Important! Before laying the first rows, check that the cut planks (or tiles) closest to the walls are more than 30cm long and 10cm large, depending on the total layout.

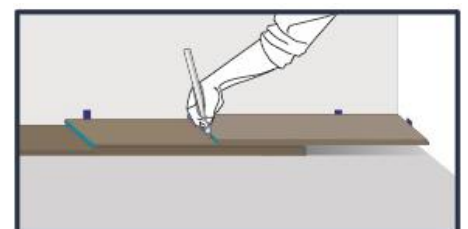
Before starting the installation, check if the wall is straight enough to place planks (or tiles) directly. If not, trace a line a few centimeters away, place your first row and use a scribe. Then, you can place back your first row against the wall. Cut the last plank (or tile) of a row to the correct length either by a scribe or using another plank (overlapping method).



Starting from left side, 5mm gap from the wall



Insert tongue in the groove and fold down



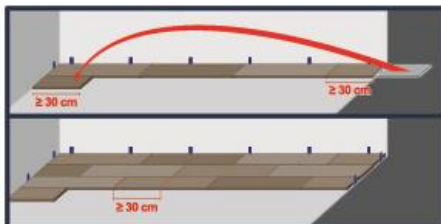
Scribe the tile with an extra one as reference

To install the next row, place the left-over panel of at least 30 cm in length and continue with full planks (or tiles). Make sure that the end joints are offset by at least 30 cm in the individual rows in order to achieve the best installation.

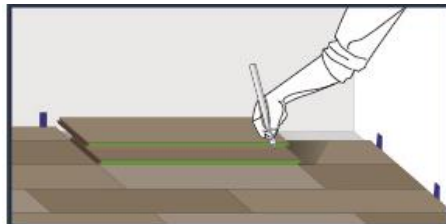
To install the last row, the distance between the wall and the row installed is measured and transferred to the panel using a scribe as for the first line, when the wall is not perfectly straight.

The last row installed should be as close to half a panel's width as possible.

Once the installation of the flooring is completed, use a skirting to cover the expansion gap and to obtain a perfect finish. For a perfect aesthetic result, we recommend the use of Tarkett matching accessories.



Use left-over tile to begin the next row



Scribe lengthwise with an extra one as reference



Use a skirting to cover the expansion gap

Remarks :

- Avoid to install planks with the same design next to each other
- To improve acoustic properties, you can use the **Tarkomfort Premium** underlay prior to iD Essential Click installation. This underlay can be installed at 90° or in the same direction as the plank length if the edge of the underlay doesn't coincide with the edge of the plank (long side).
- In case of renovation, iD Essential Click can be installed over:
 - a compact and hard plastic flooring (vinyl) or over a compact linoleum.
 - a smooth ceramic tiles flooring when there are no joints and if all tiles are stable and at the same height
 - a smooth ceramic tiles flooring, if joints are maximum 1mm deep and 1,5mm large, and planks installed over the Tarkomfort Premium underlay
- iD Essential Click cannot be installed over carpet and other textile-based flooring or very soft and flexible plastic floorings

AFTER INSTALLATION**Important :**

- **Avoid significant temperature variation, maintaining the temperature between 15°C and 28°C.**
- **Avoid installation in veranda and winter garden.**

Protection of installation

If building work is carried out after installation, the floor should always be protected by covering it with hardboard, plywood or TarkoProtect. Masking tape must not be stuck directly to the floor.

Initial site clean

An initial site clean is always recommended before the new floorcovering is commissioned.
 Lightly soiled floors: vacuum, sweep or damp mop the area to remove loose dirt and building dust.
 A combined machine is very effective for large areas, using minimum quantity of water.

Notes :

Use matting system to remove all dirt from the bottom of shoes to prevent excessive dirt and moisture being tracked on the floor from entrances. Carpet or mats with rubber backings should not be placed on vinyl tile because of chemical reaction that could cause yellowing.

In the same way, avoid any rubber pads under furniture legs.

Avoid exposure to direct sunlight for prolonged period. During peak sunlight hours, the use of the blinds is recommended. Prolonged direct sunlight can result in discoloration and excessive temperature might cause planks expansion.

Any use of solvent material is strictly prohibited.