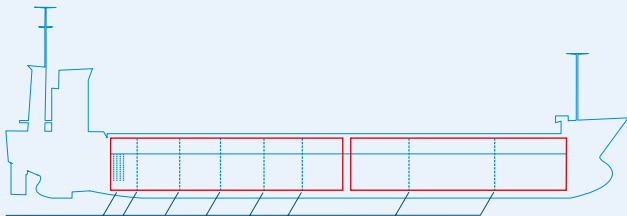
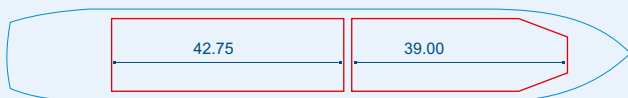


MV KRISTELLA



Four removable bulkheads, hold 1 and/or hold 2,
 4 pcs - 18.8 m, strength 2 mt/sqm
 Strength hatchcovers: 1.75 mt / sqm
 Strength tanktop: 15 mt / sqm



Capacities stated in this list are based on averages.
 Particulars believed to be correct but not guaranteed.



Built:	2000
Shipyard:	Bodewes Shipyard B.V. Hoogezand, the Netherlands
Call sign:	9HA4318
IMO No:	9187928
Type:	Multipurpose Dry Cargo and Container Carrier
Flag:	Antigua & Barbuda
Ice class:	1A
DWAT:	7303 mt
GT:	4871 mt
NT:	2600 mt
Length over all:	118.55 m
Breadth over all:	15.20 m
Moulded depth:	8.45 m
Draft:	6.70 m
2 Hatches (L x W):	39.00 x 12.65 m 42.75 x 12.65 m
2 Holds (L x W x H):	39.00 x 12.65 x 9.45 m 42.75 x 12.65 x 9.45 m
Hold Capacity (grain):	332665 cbf / 9420 cbm
TEU:	416
Main Engine:	MaK 8M32 3840 kW
Speed:	14 knots
Phone on board:	+372 5 911 6741