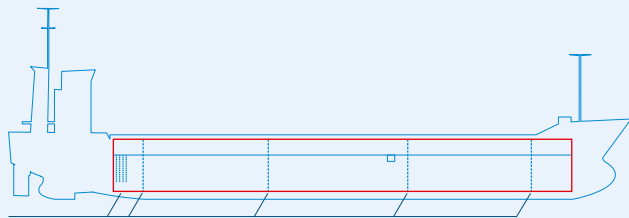
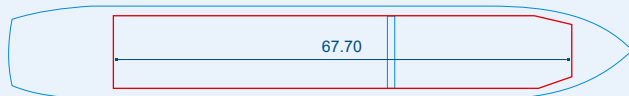


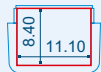
MV KRISTEL



Two removable bulkheads



Capacities stated in this list are based on averages.
 Particulars believed to be correct but not guaranteed.



| | |
|------------------------|--|
| Built: | 1999 |
| Shipyard: | Damen Shipyards B.V. Gorinchem, the Netherlands |
| Call sign: | 9HA3171 |
| IMO No: | 9191747 |
| Type: | Multipurpose Dry Cargo and Container Carrier |
| Flag: | Malta |
| Ice class: | 1C |
| DWAT: | 5049 mt |
| GT: | 2999 |
| NT: | 1714 |
| Length over all: | 94.99 m |
| Breadth over all: | 13.17 m |
| Moulded depth: | 7.15 m |
| Draft: | 6.20 m |
| 1 Hatch (L x W): | 67.70 x 11.10 m |
| 1 Hold (L x W x H): | 67.70 x 11.10 x 8.40 m |
| Hold Capacity (grain): | 218780 cbft / 6196 cbm |
| TEU: | 224 |
| Main Engine: | MaK 8M25 2400 kW |
| Speed: | 11 knots |
| Phone on board: | +372 5 18 0664 |