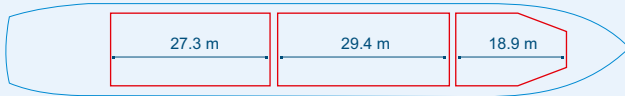
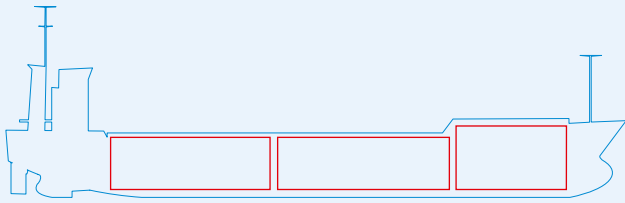
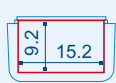


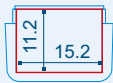
# MV KRIS



Capacities stated in this list are based on averages.  
 Particulars believed to be correct but not guaranteed.



Hold 2, 3



Hold 1

Built:	2007
Shipyard:	Nan ning Huaxing Shipyard, Nan ning, China
Call sign:	V2 B8
IMO No:	9408889
Type:	Multipurpose Dry Cargo Ship
Flag:	Antigua & Barbuda
Ice class:	1B
DWAT:	8112 mt
GT:	5598
NT:	2883
Length over all:	108.20 m
Breadth over all:	18.20 m
Moulded depth:	9.00 m
Draft:	7.007 m
3 Hatches (L x W):	17.5 x 15.2 m 25.9 x 15.2 m 25.2 x 15.2 m
3 Holds (L x W x H):	18.9 x 15.2 x 11.2 m 29.4 x 15.2 x 9.2 m 27.3 x 15.2 x 9.2 m
Hold Capacity (grain):	363441 cbft / 10292 cbm
TEU:	
Main Engine:	MaK 6M32C 3000 kW
Speed:	12 knots
Phone on board:	+372 5306 1738