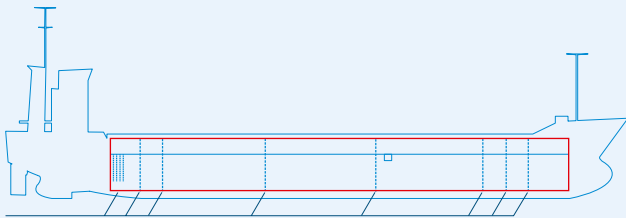
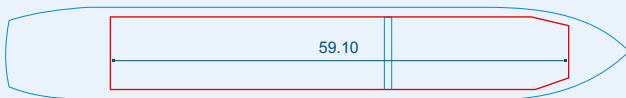


# MV KREETE



Four removable bulkheads



Capacities stated in this list are based on averages.  
 Particulars believed to be correct but not guaranteed.



Built:	2003
Shipyard:	Bodewes Shipyards B.V. Hoogezand, the Netherlands
Call sign:	V2QW6
IMO No:	9279408
Type:	General Cargo Ship and Container Carrier
Flag:	Antigua & Barbuda
Ice class:	1A
DWAT:	3481 mt
GT:	2474
NT:	1464
Length over all:	82.50 m
Breadth over all:	12.50 m
Moulded depth:	6.80 m
Draft:	5.30 m
1 Hatch (L x W):	59.10 x 10.30 m
1 Hold (L x W x H):	59.10 x 10.30 x 8.95 m
Hold Capacity (grain):	188148 cbft / 5328 cbm
TEU:	118
Main Engine:	MaK 6M25, 1850 kW
Speed:	12 knots
Phone on board:	+372 5305 6581