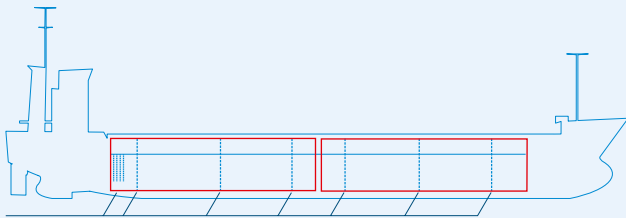
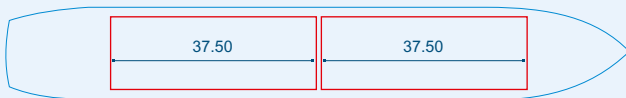


# MV KLEER



Two removable bulkheads



Capacities stated in this list are based on averages.  
 Particulars believed to be correct but not guaranteed.



Built:	2008
Shipyard:	Bodewes Shipyard B.V. Hoogezand, the Netherlands
Call sign:	V2RF2
IMO No:	9393840
Type:	Multipurpose Dry Cargo and Container Carrier
Flag:	Antigua & Barbuda
Ice class:	1B
DWAT:	5907 mt
GT:	4102 mt
NT:	2068 mt
Length over all:	106.86 m
Breadth over all:	15.20 m
Moulded depth:	8.70 m
Draft:	5.55 m
2 Hatches (L x W):	37.85 x 13.00 m
2 Holds (L x W x H):	37.50 x 12.65 x 8.99 m
Hold Capacity (grain):	295000 cbf / 8353 cbm
TEU:	279
Main Engine:	MaK 6M25, 1980 kW
Speed:	11.5 knots
Phone on board:	+372 5591 85565