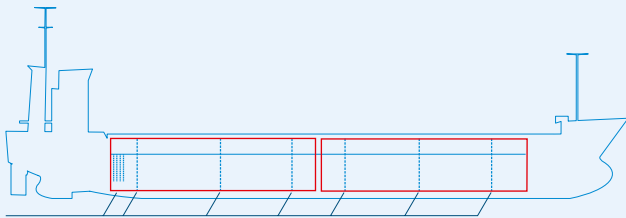
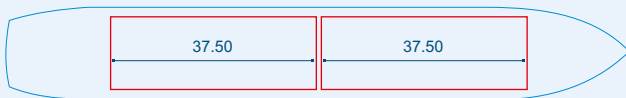


MV KLARA



Two removable bulkheads



Capacities stated in this list are based on averages.
 Particulars believed to be correct but not guaranteed.



Built:	2010
Shipyard:	Bodewes Shipyard B.V. Hoogezand, the Netherlands
Call sign:	9HA4892
IMO No:	9507130
Type:	Multipurpose Dry Cargo Carrier
Flag:	Malta
Ice class:	1B
DWAT:	5490 mt
GT:	4102
NT:	1851
Length over all:	106.86 m
Breadth over all:	15.20 m
Moulded depth:	7.85 m
Draft:	5.25 m
2 Hatches (L x W):	37.85 x 13.00 m
2 Holds (L x W x H):	37.50 x 12.65 x 8.99 m
Hold Capacity (grain):	295273 cbf / 8365 cbm
TEU:	279
Main Engine:	MaK 6M25, 2010 kW
Speed:	11.5 knots
Phone on board:	+372 5304 9092