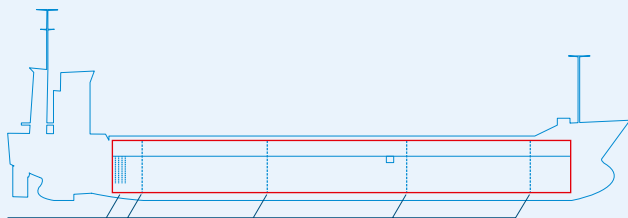
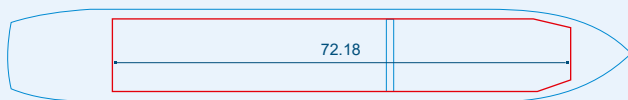


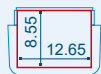
# MV KIRSI



Two removable bulkheads



Capacities stated in this list are based on averages.  
 Particulars believed to be correct but not guaranteed.



Built:	2012
Shipyard:	Ananda Shipyard & Slipways, Dhaka, Bangladesh
Call sign:	V2GX8
IMO No:	9490179
Type:	Multipurpose Dry Cargo Carrier
Flag:	Antigua & Barbuda
Ice class:	-
DWAT:	5500 mt
GT:	3833 mt
NT:	2127 mt
Length over all:	104.14 m
Breadth over all:	15.25 m
Moulded depth:	7.45 m
Draft:	5.60 m
1 Hatch (L x W):	72.18 x 12.65 m
1 Hold (L x W x H):	72.18 x 12.65 x 8.55 m
Hold Capacity (grain):	278031 cbft / 7806 cbm
TEU:	-
Main Engine:	Wärtsila 6L26, 2040 kW
Speed:	12 knots
Phone on board:	+372 5385 6828