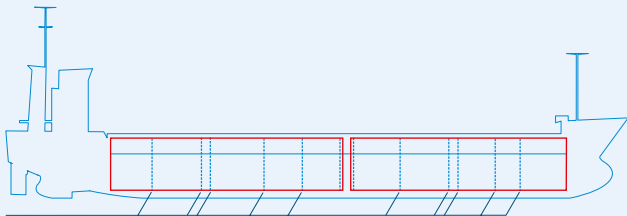
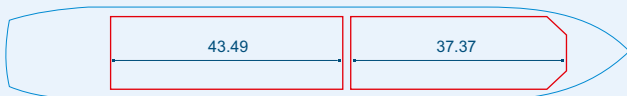


# MV KILLU



Two removable tweendeck/bulkheads, hold 1 and/or hold 2  
 Strength hatchcovers: 1.5 mt / sqm  
 Strength tanktop: 15 mt / sqm



Capacities stated in this list are based on averages.  
 Particulars believed to be correct but not guaranteed.



Built:	2009
Shipyard:	Jiangsu Yangzi Changbo Shipbuilding Co Ltd
Call sign:	V2RC2
IMO No:	9454826
Type:	Multipurpose Dry Cargo and Container Carrier
Flag:	Antigua & Barbuda
Ice class:	1A
DWAT:	6644 mt
GT:	4255
NT:	2368
Length over all:	114.40 m
Breadth over all:	14.40 m
Moulded depth:	8.10 m
Draft:	6.42 m
2 Hatches (L x W):	37.37 x 11.70 m 43.49 x 11.70 m
2 Holds (L x W x H):	37.37 x 11.70 x 8.99 m 43.49 x 11.70 x 8.99 m
Hold Capacity (grain):	300246 cbft / 8501 cbm
TEU:	244
Main Engine:	MaK 9M25c, 2970 kW
Speed:	12 knots
Phone on board:	+372 5440 0934