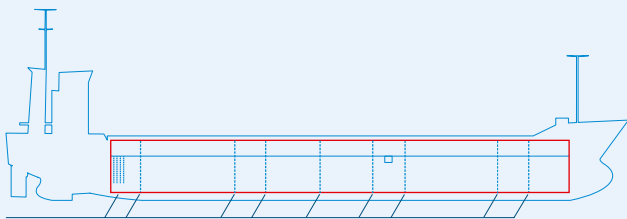
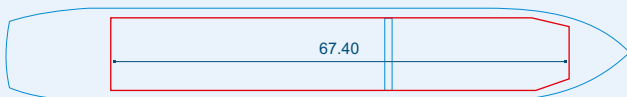


# MV KETTER



Two removable bulkheads



Capacities stated in this list are based on averages.  
 Particulars believed to be correct but not guaranteed.



Built:	2000
Shipyard:	Damen Shipyards B.V. Hoogezand, the Netherlands
Call sign:	9HA3252
IMO No:	9195860
Type:	Multipurpose Dry Cargo and Container Carrier
Flag:	Malta
Ice class:	1C
DWAT:	5050 mt
GT:	2998 mt
NT:	1709 mt
Length over all:	94.99 m
Breadth over all:	13.17 m
Moulded depth:	7.15 m
Draft:	6.18 m
1 Hatch (L x W):	67.40 x 11.10 m
1 Hold (L x W x H):	67.40 x 11.10 x 8.40 m
Hold Capacity (grain):	218780 cbft / 6196 cbm
TEU:	224
Main Engine:	MaK 8M25 2200 kW
Speed:	11 knots
Phone on board:	+372 5306 4889