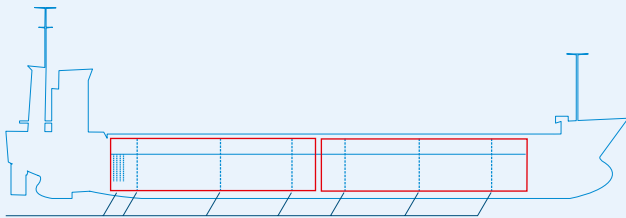
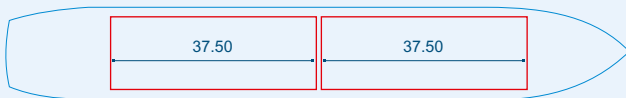


# MV KERSTI



Two removable bulkheads



Capacities stated in this list are based on averages.  
 Particulars believed to be correct but not guaranteed.



Built:	2006
Shipyard:	Bodewes Shipyard B.V. Hoogezand, the Netherlands
Call sign:	9HA4127
IMO No:	9342138
Type:	Multipurpose Dry Cargo and Container Carrier
Flag:	Malta
Ice class:	1B
DWAT:	5456 mt
GT:	4102
NT:	1851
Length over all:	106.86 m
Breadth over all:	15.20 m
Moulded depth:	8.70 m
Draft:	5.25 m
2 Hatches (L x W):	37.85x13.00 m
2 Holds (L x W x H):	37.50 x 12.65 x 8.99 m
Hold Capacity (grain):	295273 cbf / 8365 cbm
TEU:	100
Main Engine:	MaK 6M25, 1980 kW
Speed:	11.5 knots
Phone on board:	+372 5 199 1233