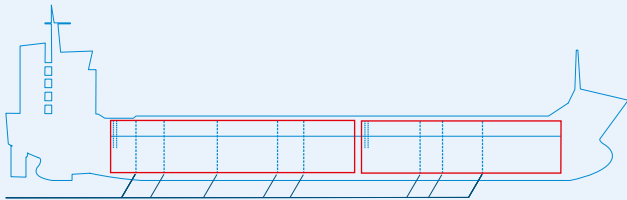
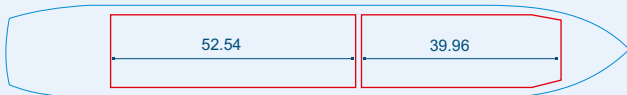


MV KELLY



Four removable bulkheads



Capacities stated in this list are based on averages.
 Particulars believed to be correct but not guaranteed.



Built:	2004
Shipyard:	Bodewes Scheepswerf Volharding Foxhol B.V. / Daewoo Mangalia Heavy Industries S.A.
Call sign:	9HA4962
IMO No:	9255622
Type:	General Cargo Ship equipped for the carriage of containers
Flag:	Malta
Ice class:	1A
DWAT:	9777 mt
GT:	6361
NT:	3099
Length over all:	132.23 m
Breadth over all:	15.87 m
Moulded depth:	11.15 m
Draft:	7.75 m
2 Hatches (L x W):	39.96 x 13.20 m 52.54 x 13.20 m
2 Holds (L x W x H):	39.96 x 13.20 x 10.89 m 52.54 x 13.20 x 10.89 m
Hold Capacity (grain):	452528 cbft / 12814 cbm
TEU:	holds 264, deck 236
Main Engine:	MaK 8M32C 3840 kW
Speed:	13.5 knots
Phone on board:	+372 5620 3517