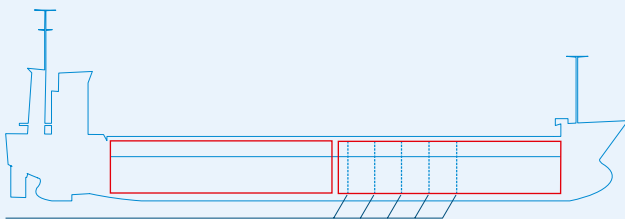
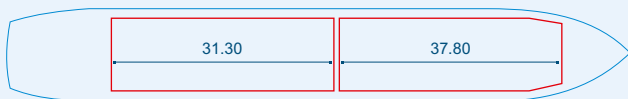


MV KATRIN



One removable bulkhead



Capacities stated in this list are based on averages.
 Particulars believed to be correct but not guaranteed.



Built:	1996
Shipyard:	Pattje Shipyard B.V. Waterhuizen, the Netherlands
Call sign:	9HA3001
IMO No:	9155987
Type:	Multipurpose Dry Cargo Carrier
Flag:	Antigua & Barbuda
Ice class:	1A
DWAT:	5014 mt
GT:	3170 mt
NT:	1876 mt
Length over all:	98.90 m
Breadth over all:	13.80 m
Moulded depth:	7.40 m
Draft:	6.05 m
2 Hatches (L x W x H):	31.30 x 11.20 x 8.46 m 37.80 x 11.20 x 8.46 m
2 Holds (L x W x H):	31.30 x 11.20 x 8.46 m 37.80 x 11.20 x 8.46 m
Hold Capacity (grain):	221379 cbft / 6269 cbm
Main Engine:	MaK 6M32, 2340 kW
Speed:	12.5 knots
Phone on board:	+372 53 084676