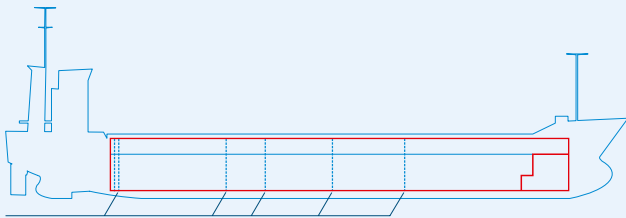
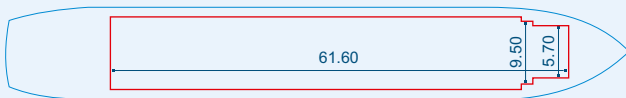


MV KATARIINA



Two removable bulkheads



Capacities stated in this list are based on averages.
 Particulars believed to be correct but not guaranteed.



Built:	2011
Shipyard:	Zhejiang Hexing Shipyard Wenling City, China
Call sign:	V2QZ9
IMO No:	9467213
Type:	Multipurpose Dry Cargo Carrier
Flag:	Antigua & Barbuda
Ice class:	1A
DWAT:	4114 mt
GT:	2862 mt
NT:	1295 mt
Length over all:	94.70 m
Breadth over all:	13.40 m
Moulded depth:	7.80 m
Draft:	5.69 m
1 Hatch (L x W):	61.60 x 11.49 m
1 Hold (L x W x H):	61.60 x 11.20 x 8.34 m
Hold Capacity (grain):	194982 cbft / 5522 cbm
TEU:	44
Main Engine:	MaK 6M25, 2010 kW
Speed:	12 knots
Phone on board:	+372 5437 0137