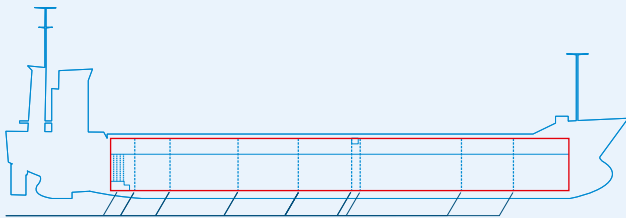
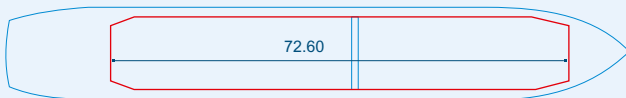


MV KAROLI



Two removable bulkheads



Capacities stated in this list are based on averages.
 Particulars believed to be correct but not guaranteed.



Built:	1998
Shipyard:	Scheepswert Ferus Smit B.V. Hoogezand, the Netherlands
Call sign:	V2RG5
IMO No:	9180841
Type:	Multipurpose Dry Cargo and Container Carrier
Flag:	Antigua & Barbuda
Ice class:	1A
DWAT:	6318 mt
GT:	3954 mt
NT:	2086 mt
Length over all:	100.85 m
Breadth over all:	14.95 m
Moulded depth:	8.41 m
Draft:	6.99 m
2 Hatches (L x W):	39.20 x 12.03 m 39.20 x 12.03 m
1 Hold (L x W x H):	72.60 x 12.03 x 9.44 m
Hold Capacity (grain):	272218 cbft / 7707 cbm
TEU:	270
Main Engine:	Deutz MWM TBD 645L6 2760 kW
Speed:	12.5 knots
Phone on board:	+372 51981414