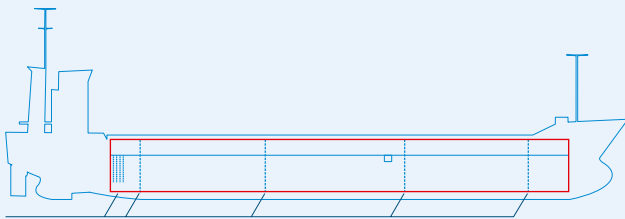
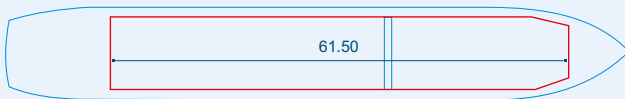


# MV KARMEL



Two removable bulkheads



Capacities stated in this list are based on averages.  
 Particulars believed to be correct but not guaranteed.



Built:	2004
Shipyard:	Bodewes Shipyard B.V. Hoogezand, the Netherlands
Call sign:	9HA2896
IMO No:	9290672
Type:	Multipurpose Dry Cargo and Container Carrier
Flag:	Malta
Ice class:	1B
DWAT:	4516 mt
GT:	3183
NT:	1765
Length over all:	89.98 m
Breadth over all:	15.20 m
Moulded depth:	6.90 m
Draft:	5.25 m
1 Hatch (L x W):	61.50 x 12.65 m
1 Hold (L x W x H):	61.50 x 12.65 x 8.42 m
Hold Capacity (grain):	225700 cbft / 6392 cbm
TEU:	221
Main Engine:	MAK 6M25, 1850 kW
Speed:	12 knots
Phone on board:	+372 5 29 6426