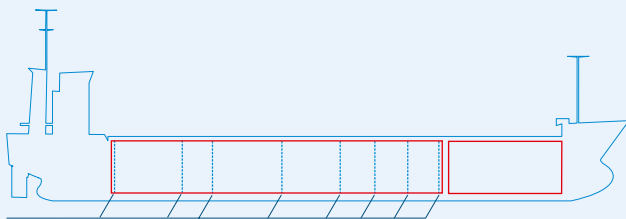
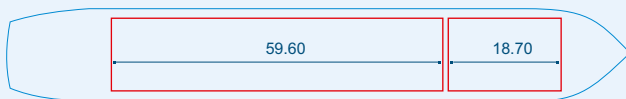


# MV KARIN



1 removable bulkhead



Capacities stated in this list are based on averages.  
 Particulars believed to be correct but not guaranteed.



Built:	2008
Shipyard:	Scheepswerf Peters B.V., Kampen, the Netherlands
Call sign:	V2RF8
IMO No:	9376464
Type:	Multipurpose Dry Cargo and Container Carrier
Flag:	Antigua & Barbuda
Ice class:	1B
DWAT:	7112 mt
GT:	4106 mt
NT:	1967 mt
Length over all:	118.90 m
Breadth over all:	13.35 m
Moulded depth:	9.10 m
Draft:	6.45 m
2 Hatches (L x W x H):	18.70 x 11.20 m 59.60 x 11.20 m
2 Holds (L x W x H):	18.70 x 11.20 x 9.00 m 59.60 x 11.20 x 9.00 m
Hold Capacity (grain):	279757 cbft / 7923 cbm
TEU:	256
Main Engine:	Wärtsila 6L26, 2040 kW
Speed:	12.0 knots
Phone on board:	+372 513 4601