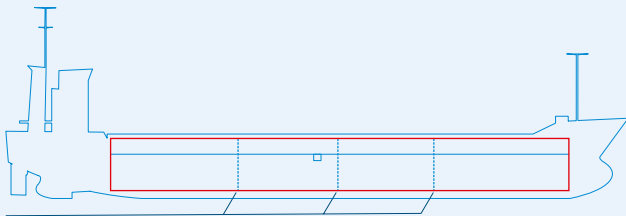
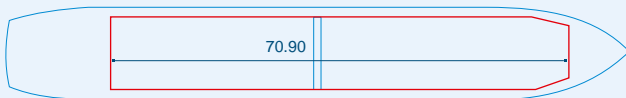


# MV KAILI



Two removable bulkheads



Capacities stated in this list are based on averages.  
 Particulars believed to be correct but not guaranteed.



Built:	1996
Shipyard:	Scheepswert Ferus Smit B.V. Hoogezand, the Netherlands
Call sign:	V2RE3
IMO No:	9114737
Type:	Multipurpose Dry Cargo Carrier
Flag:	Antigua & Barbuda
Ice class:	1A
DWAT:	4955 mt
GT:	3117 mt
NT:	1744 mt
Length over all:	99.86 m
Breadth over all:	13.63 m
Moulded depth:	7.20 m
Draft:	5.96 m
1 Hatch (L x W):	70.90 x 10.85 m
1 Hold (L x W x H):	70.90 x 10.85 x 8.36 m
Hold Capacity (grain):	223540 cbft / 6330 cbm
Main Engine:	Stork 8SW280, 2400 kW
Speed:	12 knots
Phone on board:	+372 51 26451