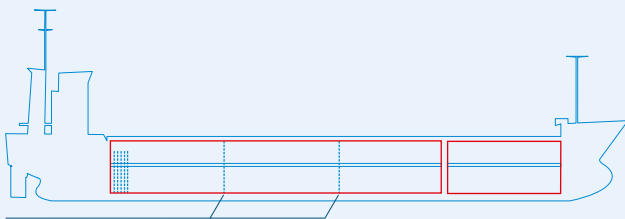
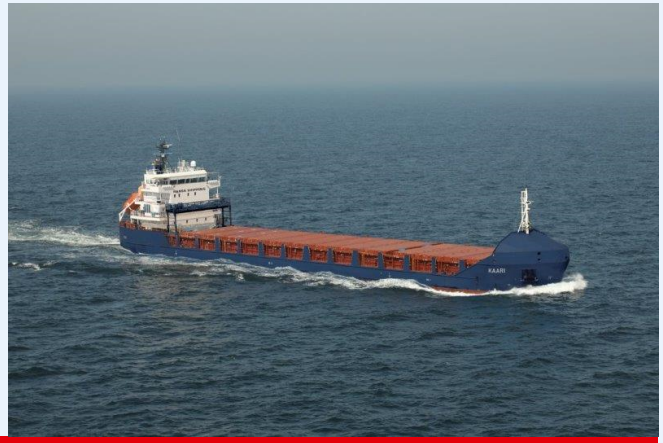
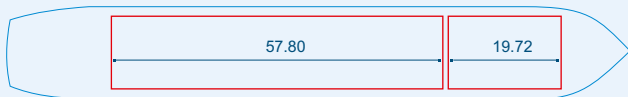


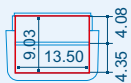
MV KAARI



2 removable bulkheads
 14 tweendeck pontoons



Capacities stated in this list are based on averages.
 Particulars believed to be correct but not guaranteed.



Built:	2009
Shipyard:	Dalian Fishing Vessel Co. Dalian, Liaoning, China
Call sign:	V2DU8
IMO No:	9434761
Type:	Multipurpose Dry Cargo and Container Carrier
Flag:	Antigua & Barbuda
Ice class:	1A
DWAT:	7399 mt
GT:	5313
NT:	2382
Length over all:	115.47 m
Breadth over all:	16.50 m
Moulded depth:	7.95 m
Draft:	6.28 m
2 Hatches (L x W x H):	57.81 x 13.50 m 19.72 x 13.50 m
2 Holds (L x W x H):	57.81 x 13.50 x 9.05 m 19.72 x 13.50 x 9.05 m
Hold Capacity (grain):	329450 cbft / 9329 cbm
TEU:	326
Main Engine:	MaK 8M32C, 3840 kW
Speed:	11.0 knots
Phone on board:	+372 53 008508