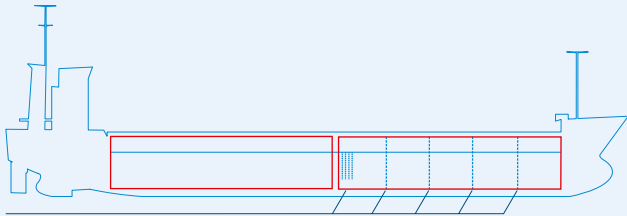
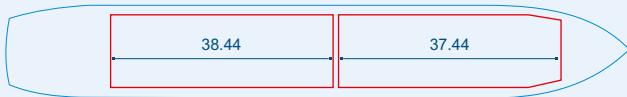


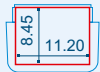
MV KAURI



One removable bulkheads capacities stated in this list are based on averages.



Ca
 Particulars believed to be correct but not guaranteed.



Built:	1998
Shipyard:	Pattje Shipyard B.V. Waterhuizen, the Netherlands
Call sign:	9HA2490
IMO No:	9173226
Type:	Multipurpose Dry Cargo and Container Carrier
Flag:	Malta
Ice class:	1A
DWAT:	4950 mt
GT:	3454
NT:	2035
Length over all:	106.60 m
Breadth over all:	13.80 m
Moulded depth:	7.40 m
Draft:	5.63 m
2 Hatches (L x W):	37.44 x 11.20 m 38.44 x 11.20 m
2 Holds (L x W x H):	37.44 x 11.20 x 8.45 m 38.44 x 11.20 x 8.45 m
Hold Capacity (grain):	243596 cbft / 6898 cbm
TEU:	309
Main Engine:	MaK 6M32, 2640 kW
Speed:	12.5 knots
Phone on board:	+372 5331 0930