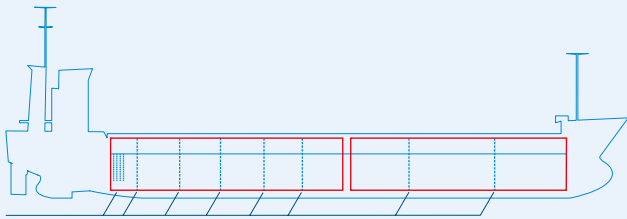
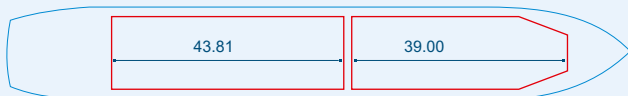


# MV KAROLIINA



Two removable tweendeck/bulkheads, hold 1 and/or hold 2  
 Tween deck: 2 pcs, strength 3.4 mt/sqm  
 Strength hatchcovers: 1.75 mt / sqm  
 Strength tanktop: 14.7 mt / sqm



Capacities stated in this list are based on averages.  
 Particulars believed to be correct but not guaranteed.



Built:	2008
Shipyard:	Bodewes Shipyard B.V. Hoogezand, the Netherlands
Call sign:	V2QZ6
IMO No:	9381380
Type:	Multipurpose Dry Cargo and Container Carrier
Flag:	Antigua & Barbuda
Ice class:	1A
DWAT:	7953 mt
GT:	5040
NT:	2681
Length over all:	119.98 m
Breadth over all:	15.20 m
Moulded depth:	8.45 m
Draft:	7.03 m
2 Hatches (L x W):	35.37 x 12.88 m 43.44 x 12.88 m
2 Holds (L x W x H):	35.37 x 12.88 x 9.45 m 43.44 x 12.88 x 9.45 m
Hold Capacity (grain):	338797 cbft / 9594 cbm
TEU:	390
Main Engine:	MaK 8M32c 3840 kW
Speed:	14 knots
Phone on board:	+372 5 440 0432