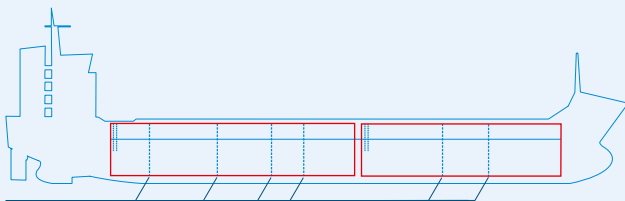
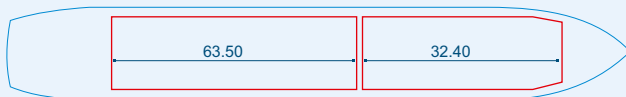


MV KAIE



Two removable bulkheads



Capacities stated in this list are based on averages.
 Particulars believed to be correct but not guaranteed.



Built:	2010
Shipyard:	Scheepswerf Ferus Smit B.V. Westerbroek, the Netherlands
Call sign:	V2QY7
IMO No:	9504102
Type:	General Cargo Ship equipped for the carriage of containers
Flag:	Antigua & Barbuda
Ice class:	1A
DWAT:	11198 mt
GT:	6621
NT:	3516
Length over all:	132.60 m
Breadth over all:	15.87 m
Moulded depth:	10.78 m
Draft:	7.91 m
2 Hatches (L x W):	32.40 x 13.20 m 63.50 x 13.20 m
2 Holds (L x W x H):	32.40 x 13.20 x 10.60 m 63.50 x 13.20 x 10.60 m
Hold Capacity (grain):	459403 cbft / 13009 cbm
TEU:	365
Main Engine:	MaK 8M32C 4000 kW
Speed:	13.5 knots
Phone on board:	+372 5343 4243