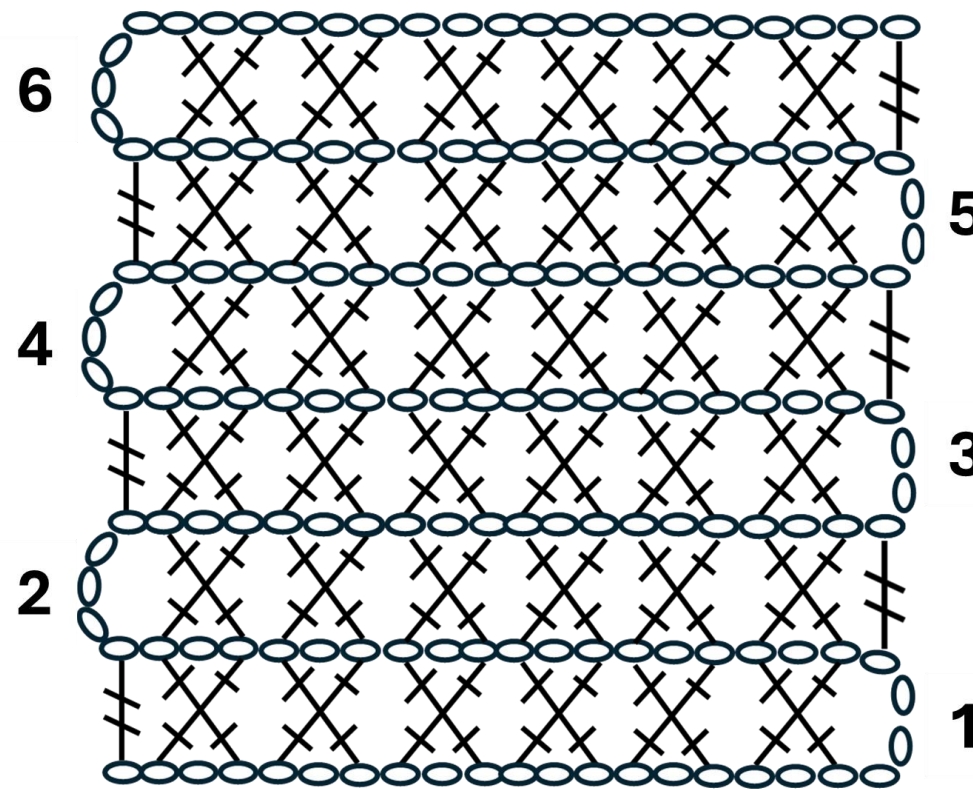


RISTSAMBAD  
KAHVELSAMBAD  
RELJEEFSED SAMBAD  
SKEEMIDEGA

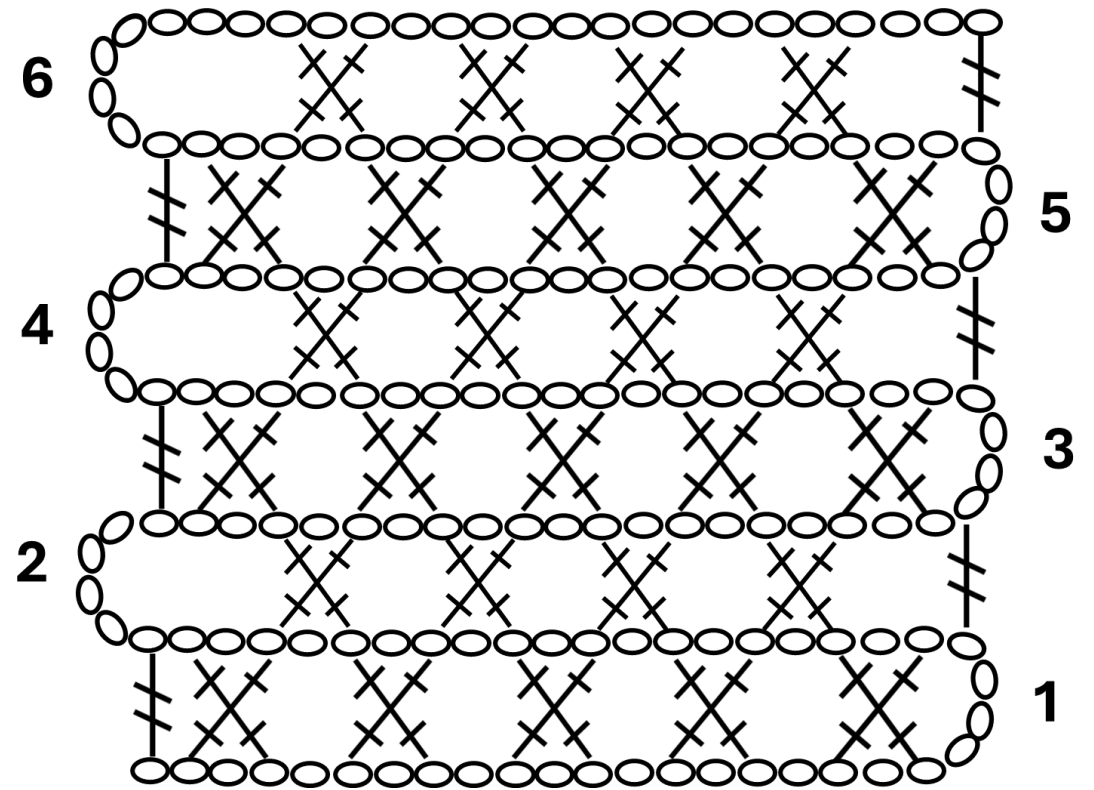
# RIST- JA KAHVELSAMBAD



○ ahelsilmus

≠ 2x sammas

✕ ristsammas



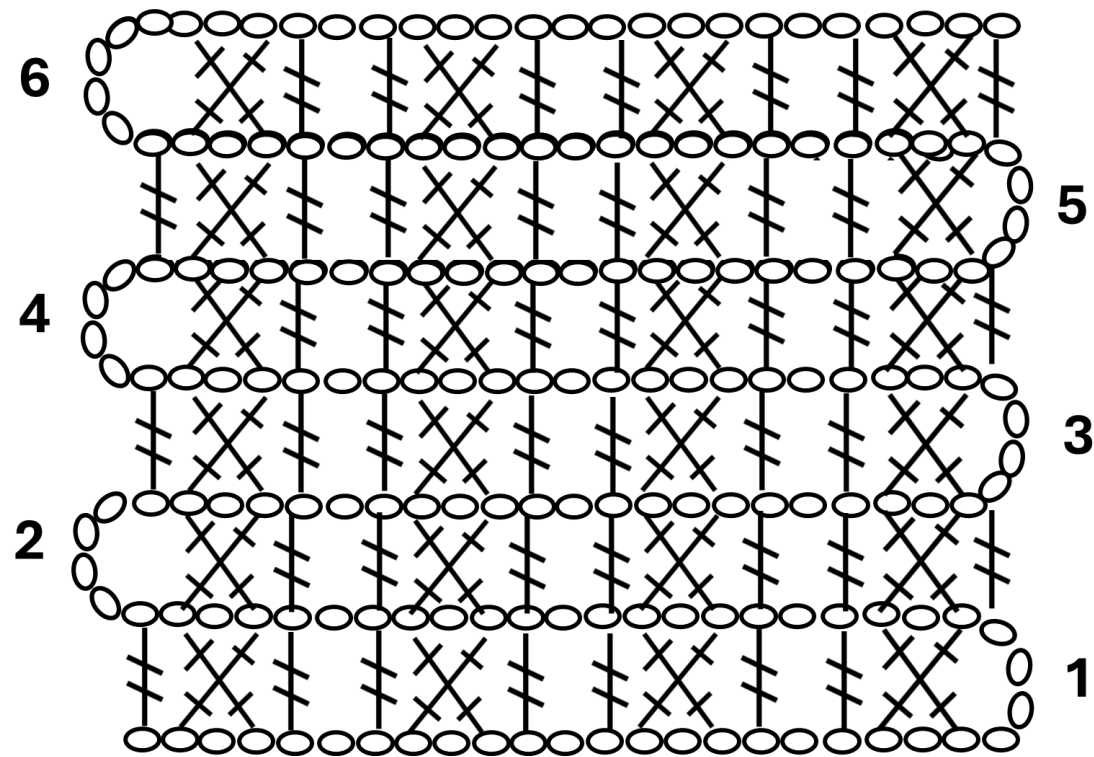
○ ahelsilmus



2x sammas



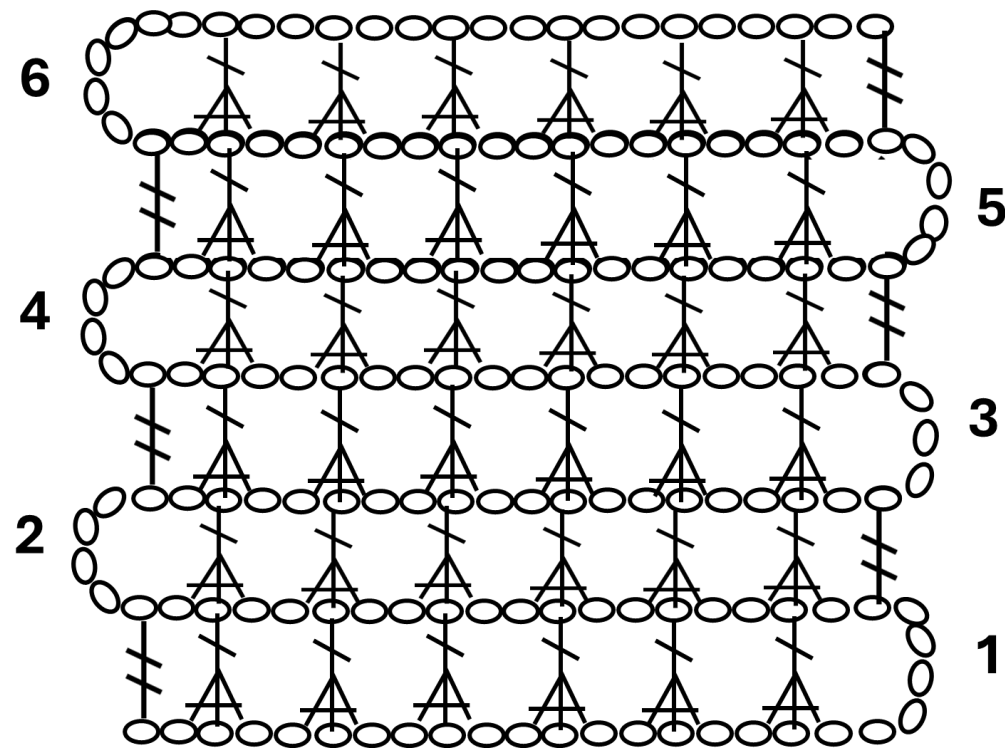
ristsammas



○ ahelsilmus

∥ 2x sammass

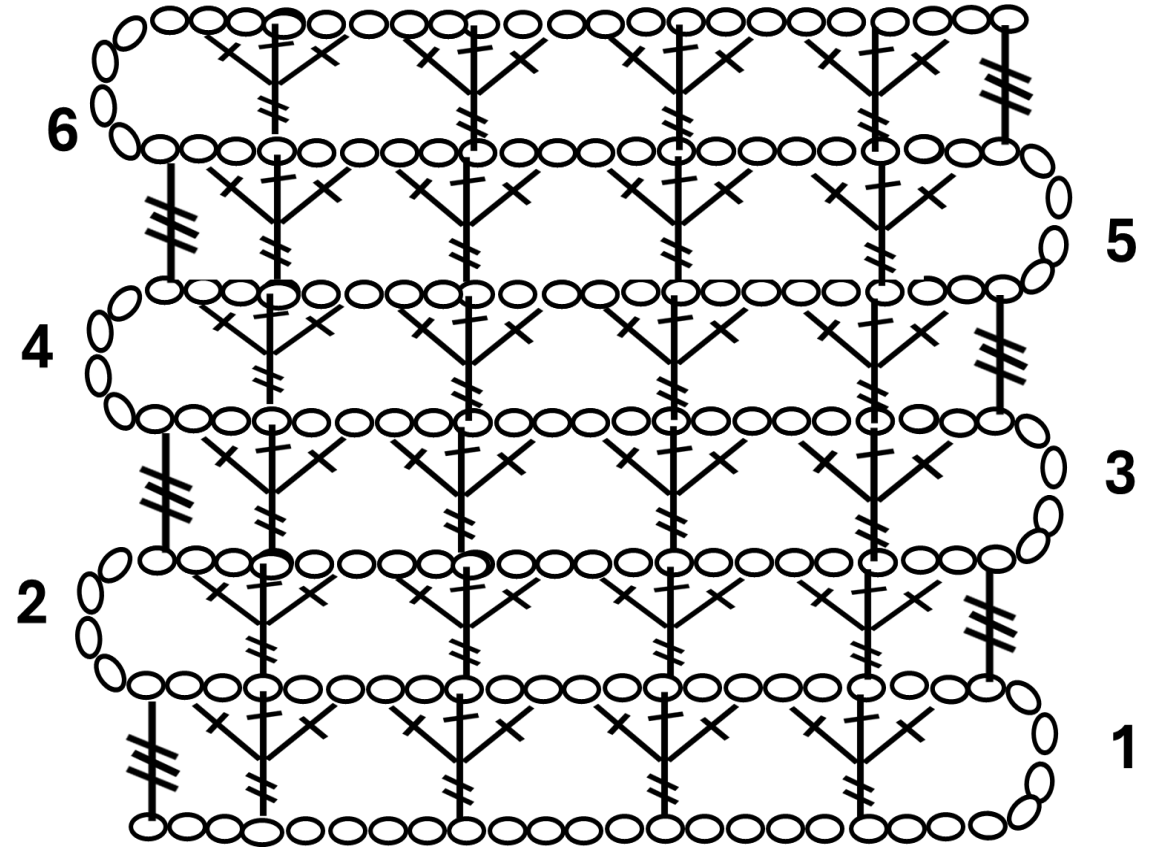
⋈ ristsammass



○ ahelsilmus

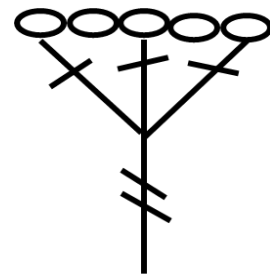
≠ 2x sammas

A-kujuline kolmeharuline  
kahvelsammas

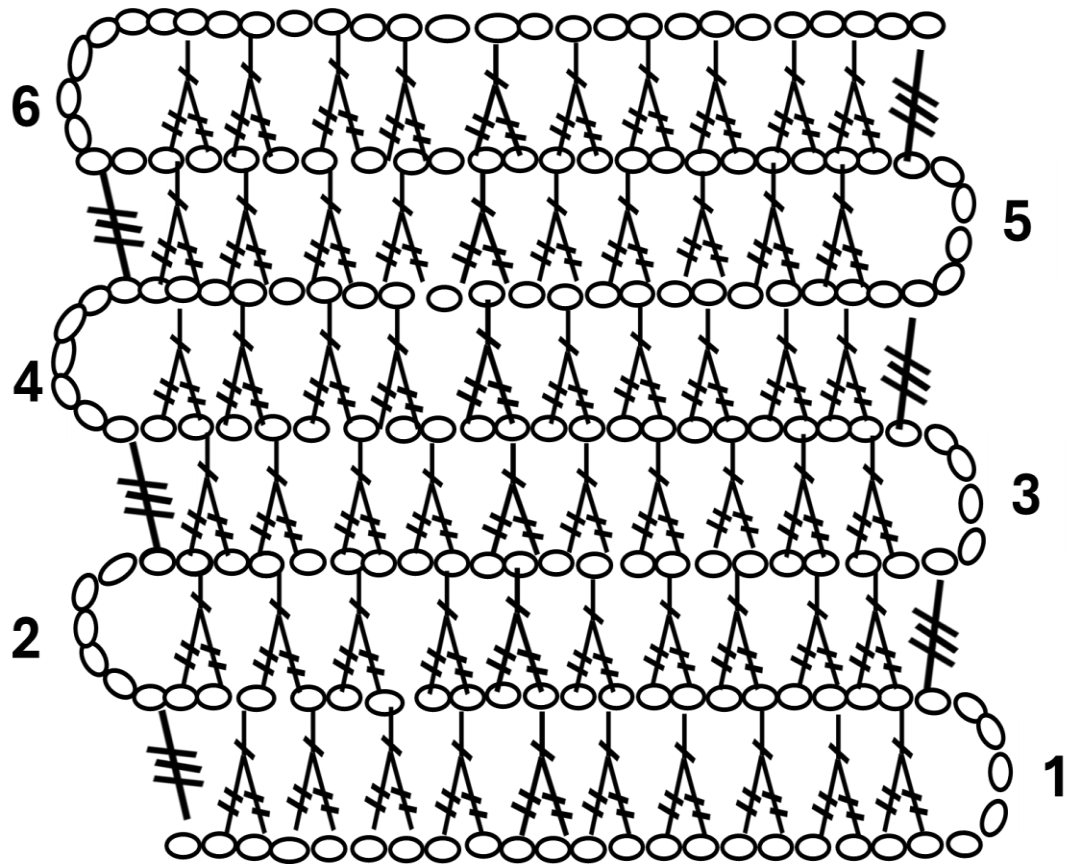


○ ahelsilmus

≡ 3x sammass



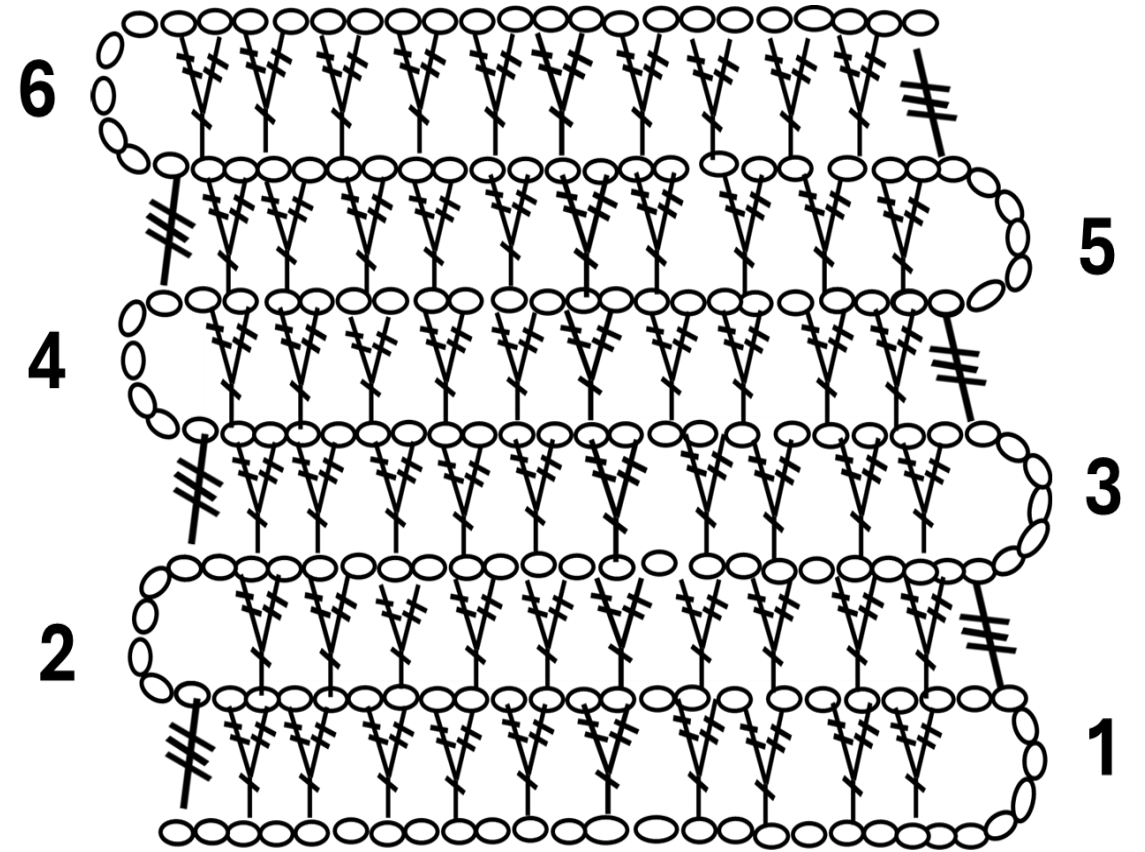
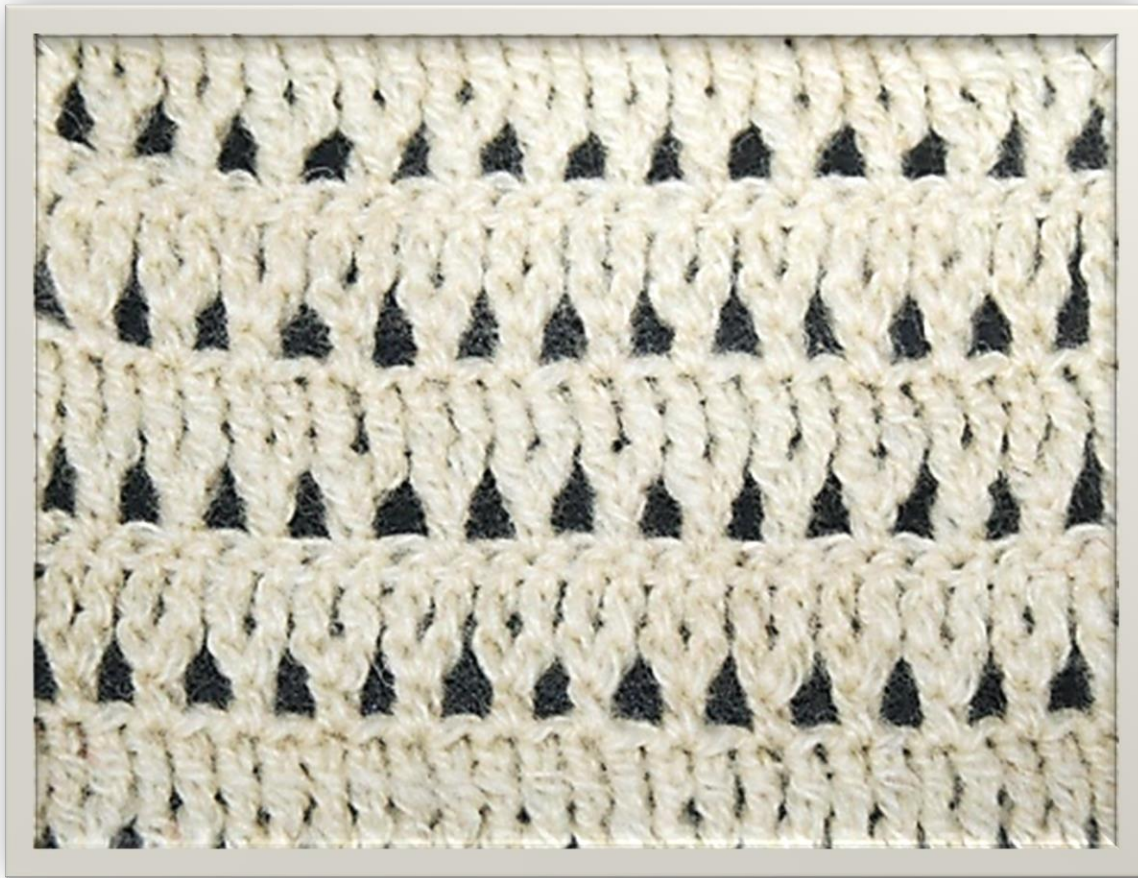
V-kujuline kolmeharuline  
kahvelsammass



○ ahelsilmus

≡ 3x sammas

A-kujuline kaheharuline kahvelsammas

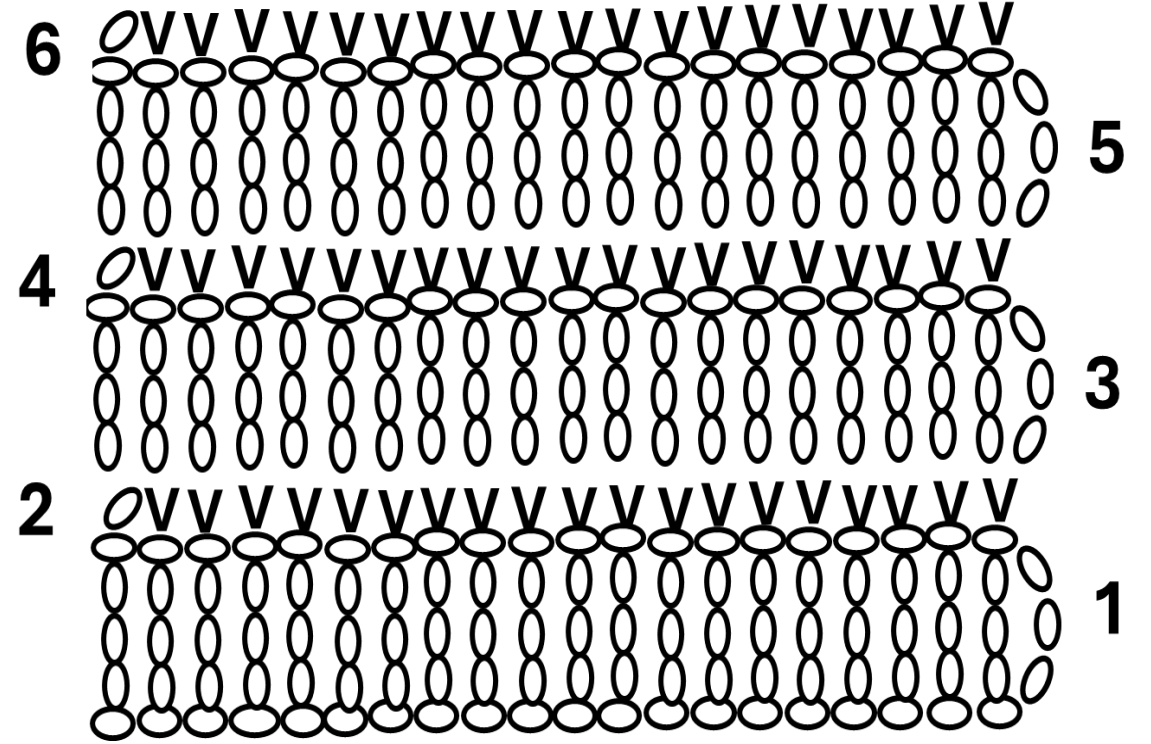


○ ahelsilmus

≡ 3x sammas

V-kujuline kaheharuline kahvelsammas





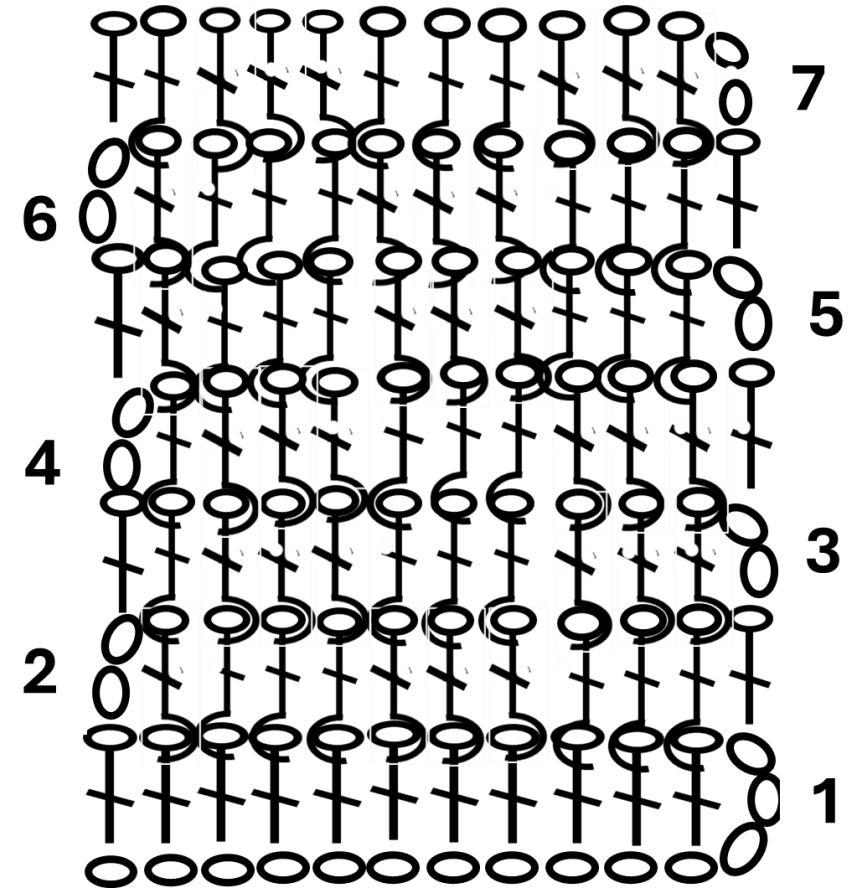
○ ahelsilmus

▼ kinnissilmus



Ahelsilmuseline sammas

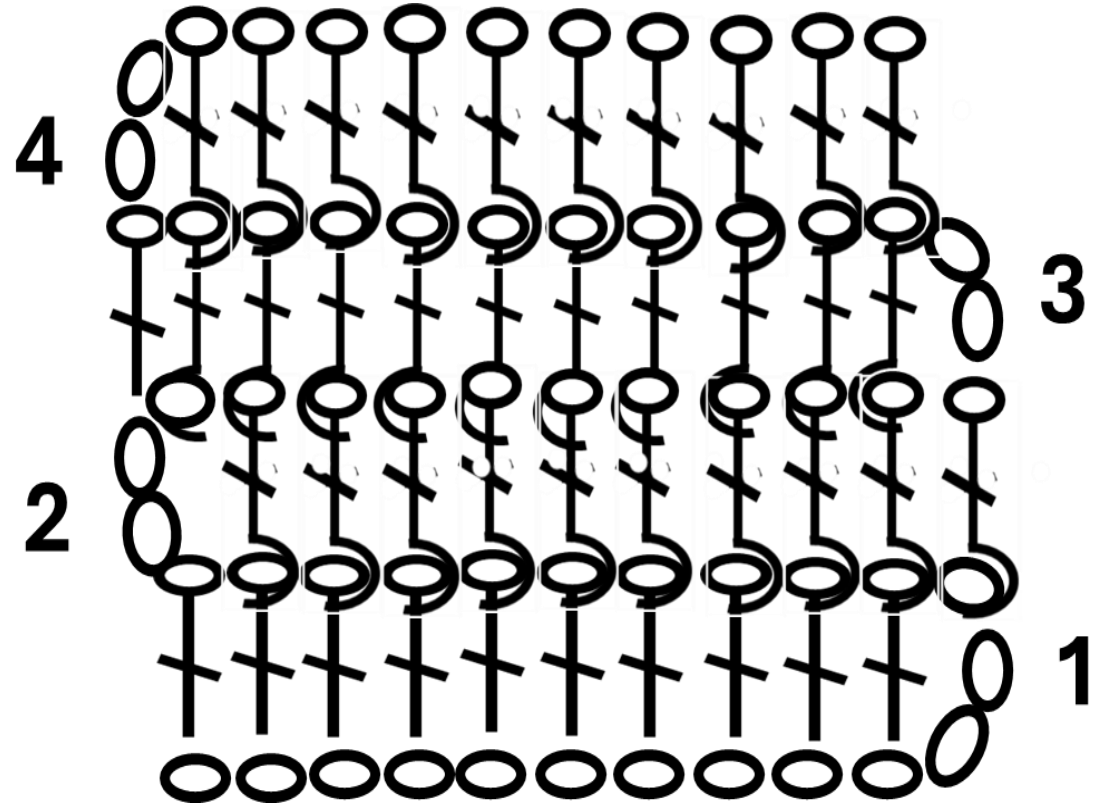
# RELJEEFSETE SAMMASTEGA PINNAD



○ ahelsilmus

⌋ 1x sammastega

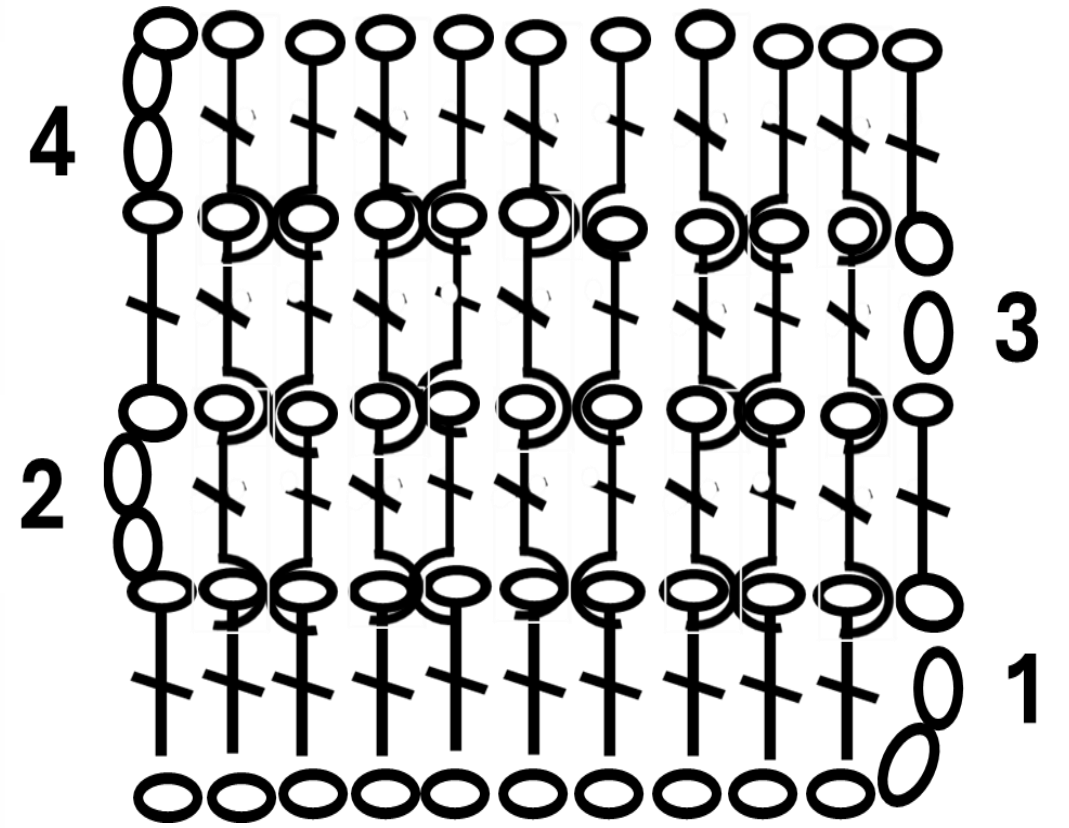
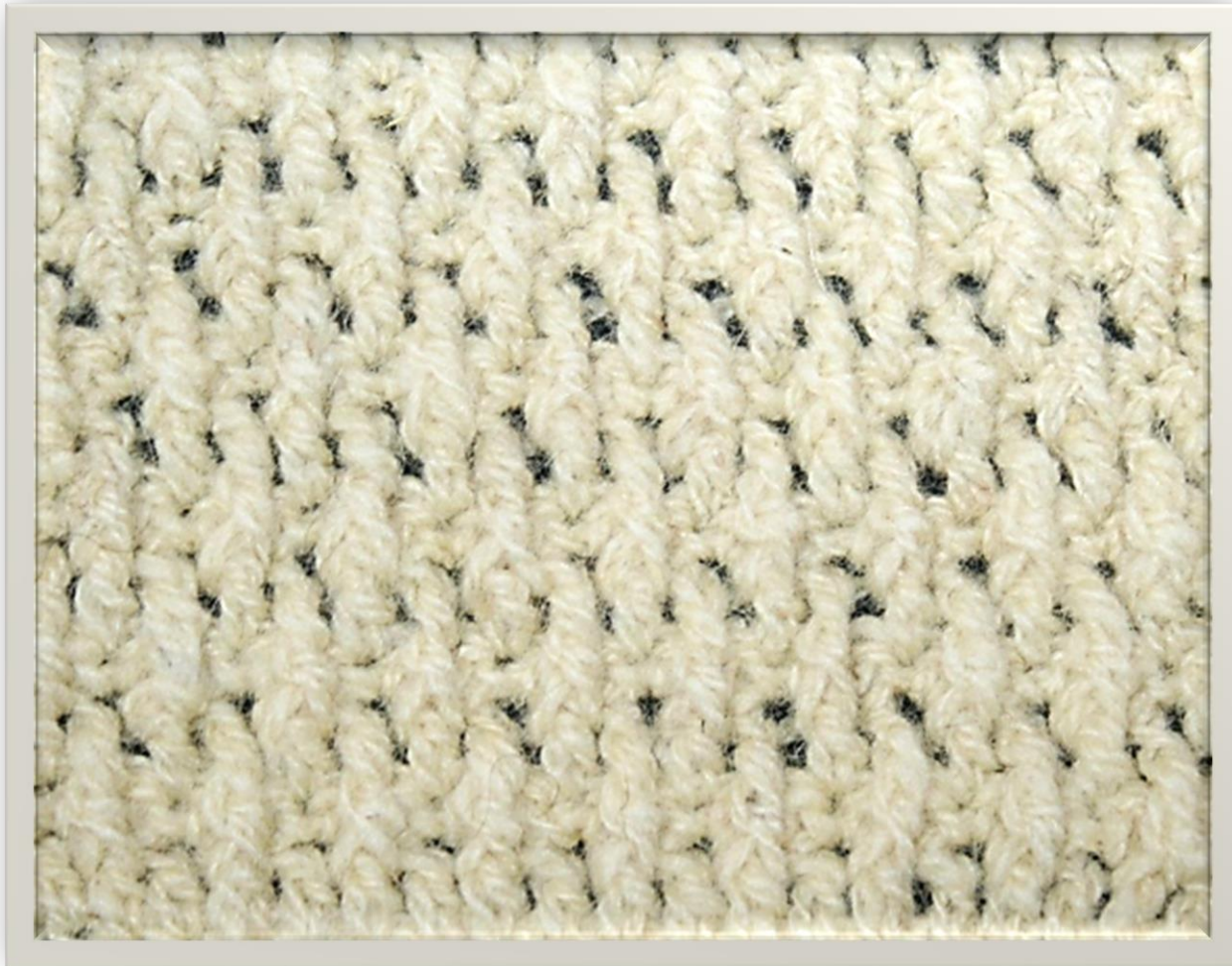
⌋ ⌋ reljeefsed sambad



○ ahelsilmus

⌋ 1x sammass

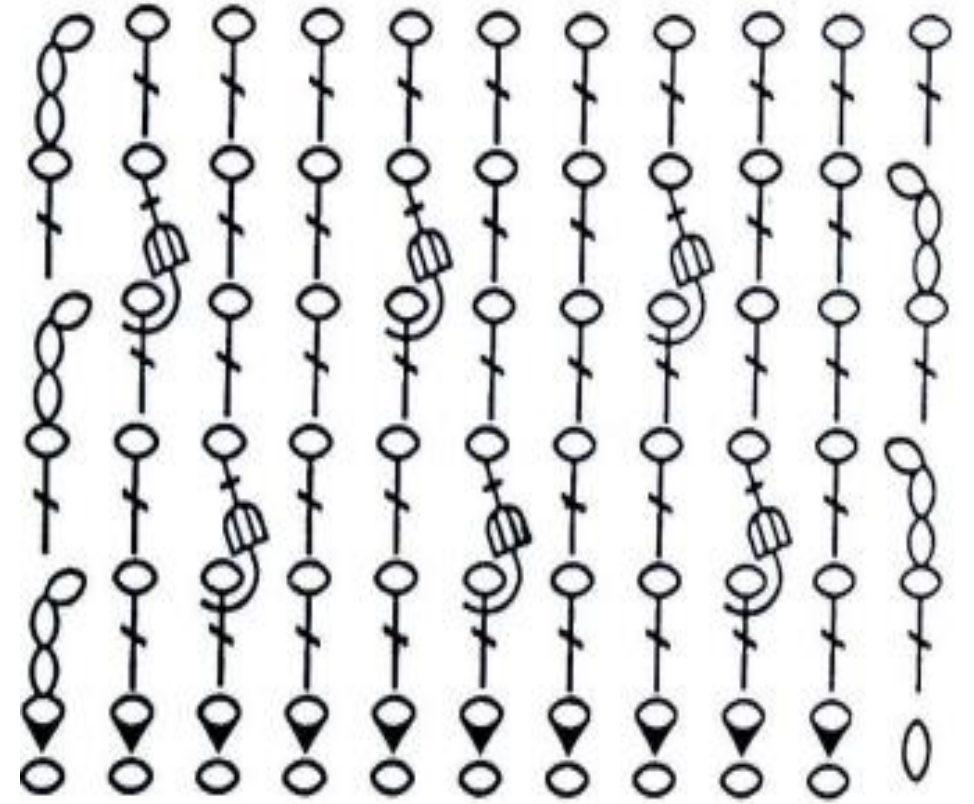
⌋ ⌋ reljeefsed sambad



○ ahelsilmus

⌋ 1x sammass

⌋ ⌋ reljeefsed sambad

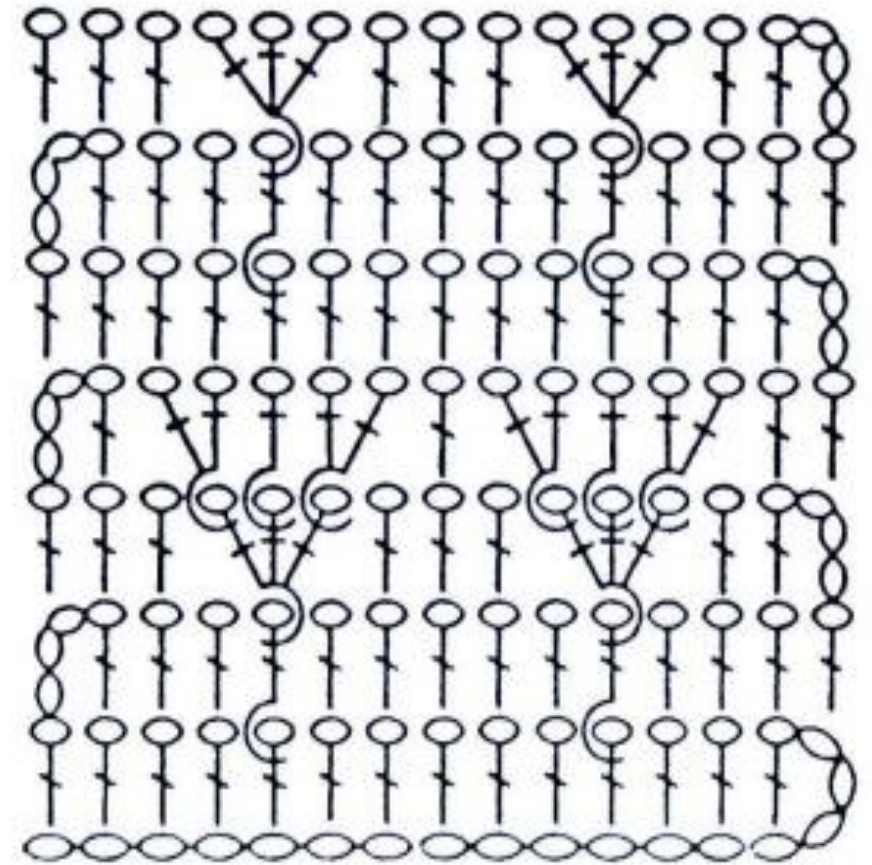


○ ahelsilmus

◐ kinnissilmus

⌞ 1x sammass

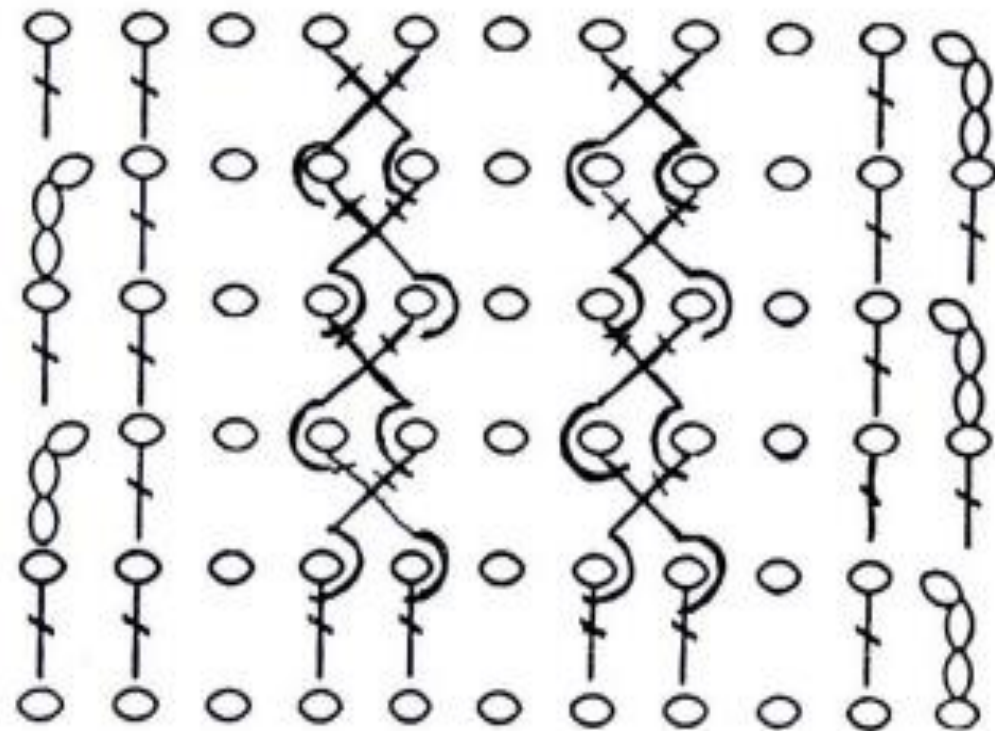
⌞ reljeefne nupp



○ ahelsilmus

⌋ 1x sammass

⌋ ⌋ reljeefsed sambad



○ ahelsilmus

⌋ 1x sammas

⌋ ⌋ reljeefne ristsammas

