



REPUBLIC OF ESTONIA
ENVIRONMENTAL BOARD

Nature friendly agriculture in European protected areas

Kaja Lotman

Environmental Board adviser,
Europarc Federation, member of
the Council

EUROPARC FEDERATION

- [http:// www.europarc.org/who-we-are/](http://www.europarc.org/who-we-are/)

The EUROPARC Federation is the network for Europe's natural and cultural heritage.

Federation works, to improve the management of Protected Areas in Europe through international cooperation, exchange of ideas and experience, and by influencing policy.

Agriculture and Protected Areas Commission

Mission: To undertake a feasibility study exploring the option of a Charter for Sustainable Agriculture.

EF strategical objective: **To promote people and nature friendly agriculture across Europe**

The conflicts between protected areas and agriculture are more known than the huge numbers of positive relations, collaborations and common initiatives already existing and promoted together by PAs and local farmers.

Flowering meadows in France



<http://www.europarc.org/case-studies/flowering-meadows-contest-france/>

Lessons learned:

The the **quality of products** (milk, cheese, meet, ...) **is directly linked to the biodiversity of these grasslands** and the consumer starts to know it.

Farmers are waiting for a better understanding and scientist explanations on their good practices to keep these meadows

Some case studies

- Flock pasture sheep – Abruzzo region Italy

Lessons learned:

- **Market mechanisms** can be used with success to conjugate support to local economy and nature conservation, giving stronger results than direct financial aid.
- **Personal motivation** and engagement is a crucial part in inducing a permanent change in attitude, and occasions for know-how exchange between craftsmen is a powerful tool to achieve both of them while also acquiring new skills.
- Farmers learned **the importance of cooperation** for a common goal.

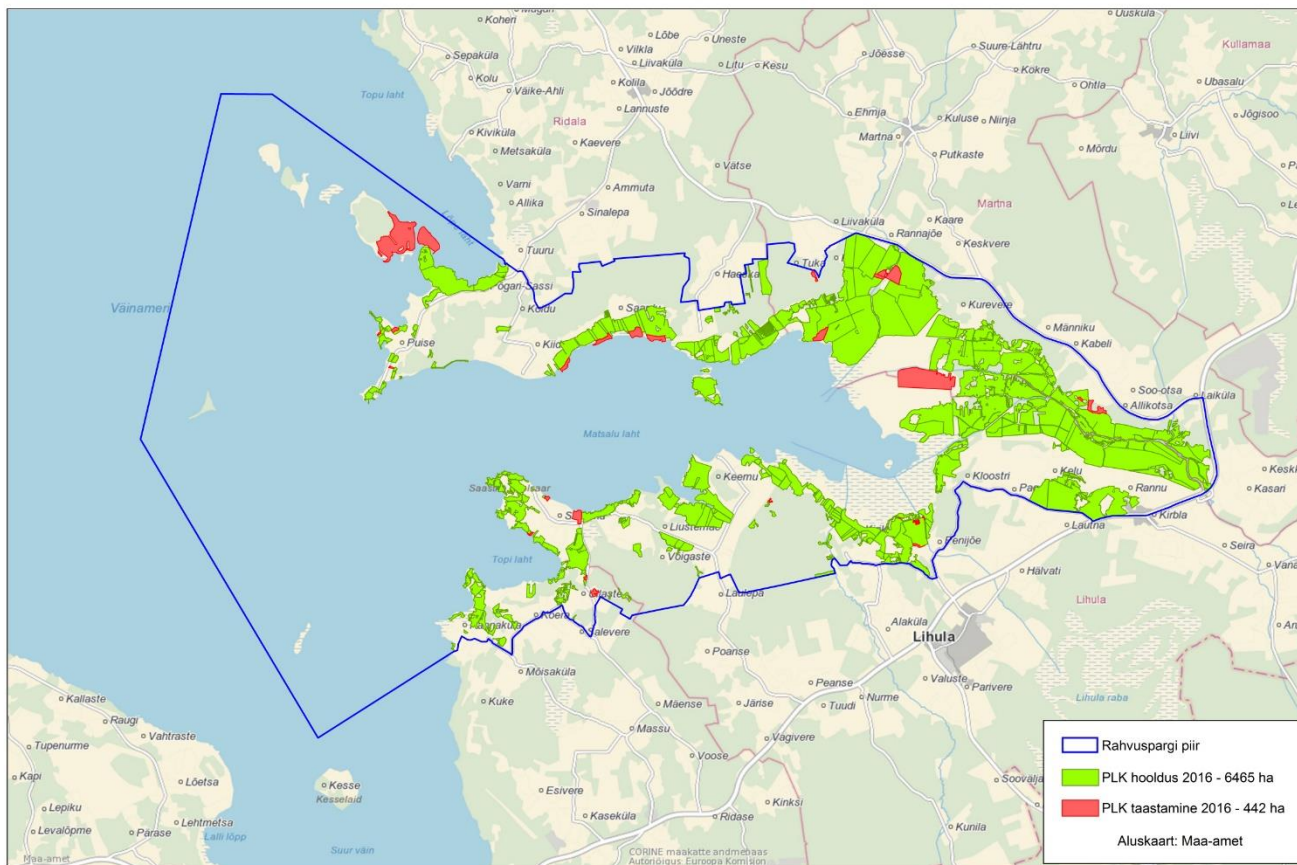


Matsalu National Park 60 - management of seminatural grasslands



MATSALU
RAHVUSPARK

Poollooduslike koosluste hooldamine ja taastamine Matsalu rahvusparkis 2016



Väinameri Project, 2000-2004

Project goals

Maintenance of biodiversity by sustainable use of natural resources

Restoration of semi-natural grasslands

- Establishment of beef cattle stocks
- Securing of production lines
- Setting up of model grazing areas
- Training of cattle farmers
- Study visits
- Indicator species (birds/plants)

Development of handicraft

- Use of wool, reed, wood
- Training of craftsmen
- Improved marketing
- Study visits

Development of local tourism

- Strengthening the natural and cultural values in the area
- Training of tourism entrepreneurs
- Improved marketing
- Study visits



Integrate nature conservation and agriculture

Many good examples of nature friendly agriculture in protected areas

Some of these get **CAP support** (agri-environmental measures)

CAP needs to integrate environmental goals in a clear way that farmers would understand





REPUBLIC OF ESTONIA
ENVIRONMENTAL BOARD

Thank you!

Kaja Lotman

Kaja.Lotman@keskkonnaamet.ee