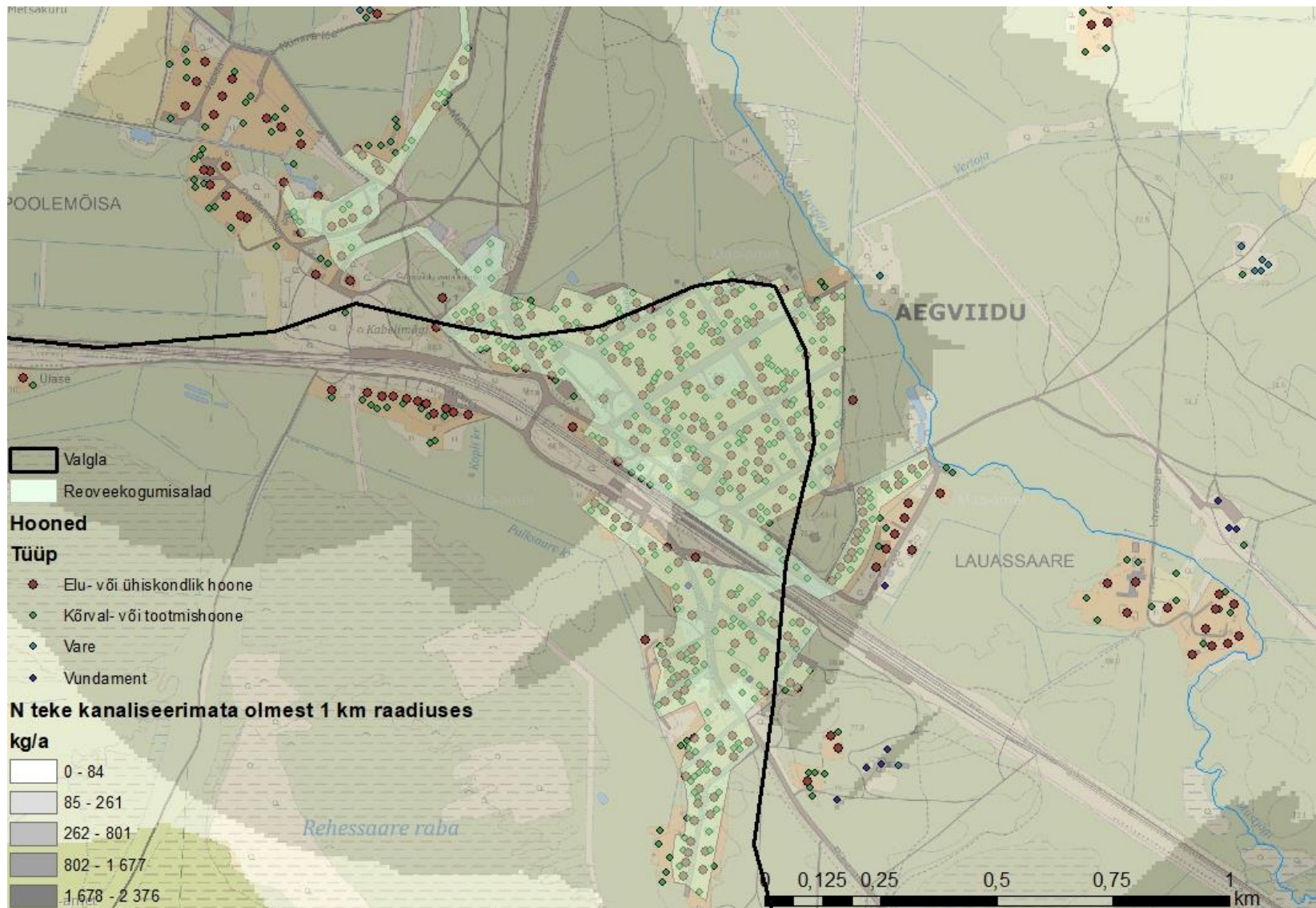


# Nõuetekohane reoveekäitlus: Jänijõe valgla

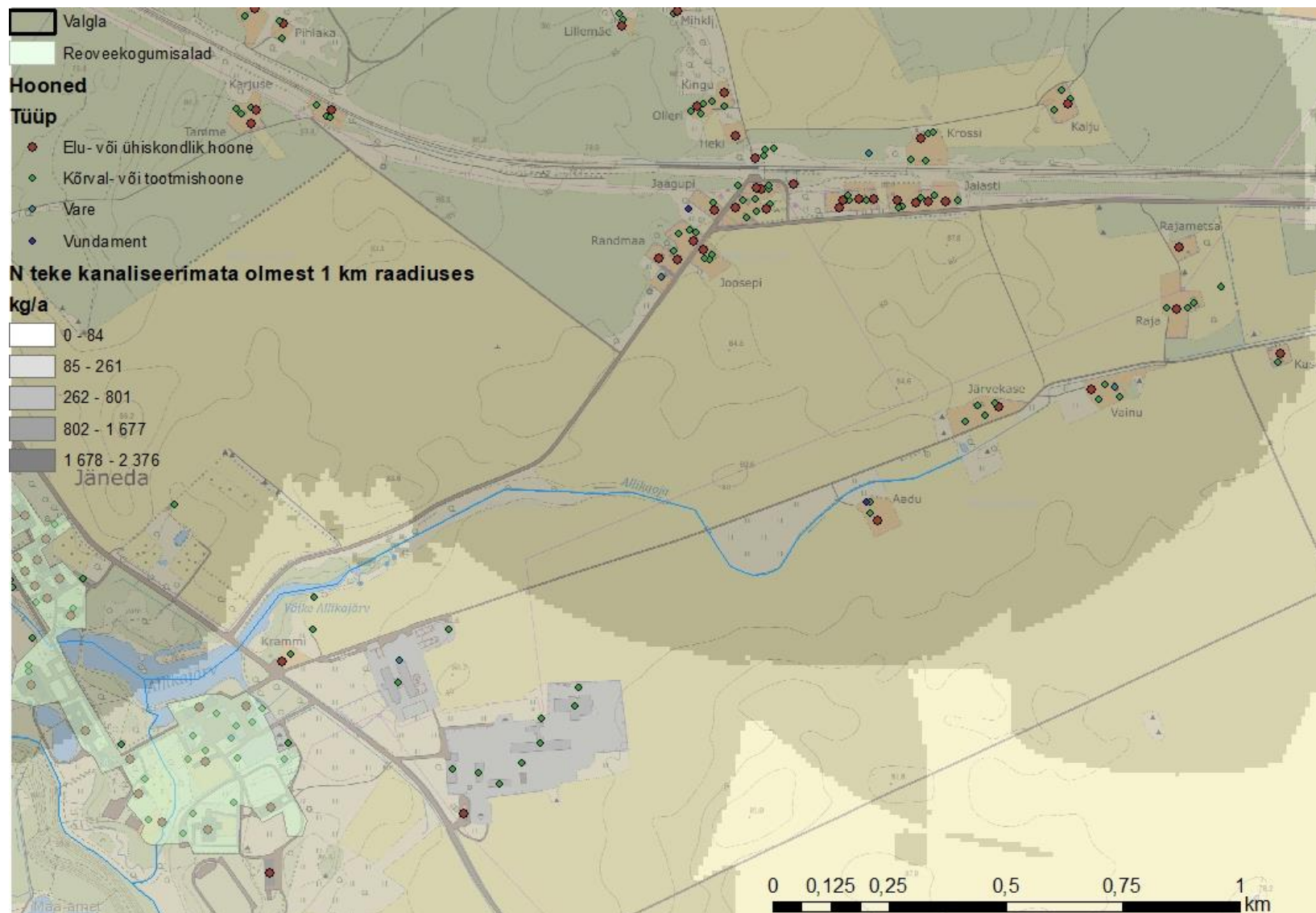
Kristjan Piirimäe

8. juunil Jänedal

# Aegviidu hooned

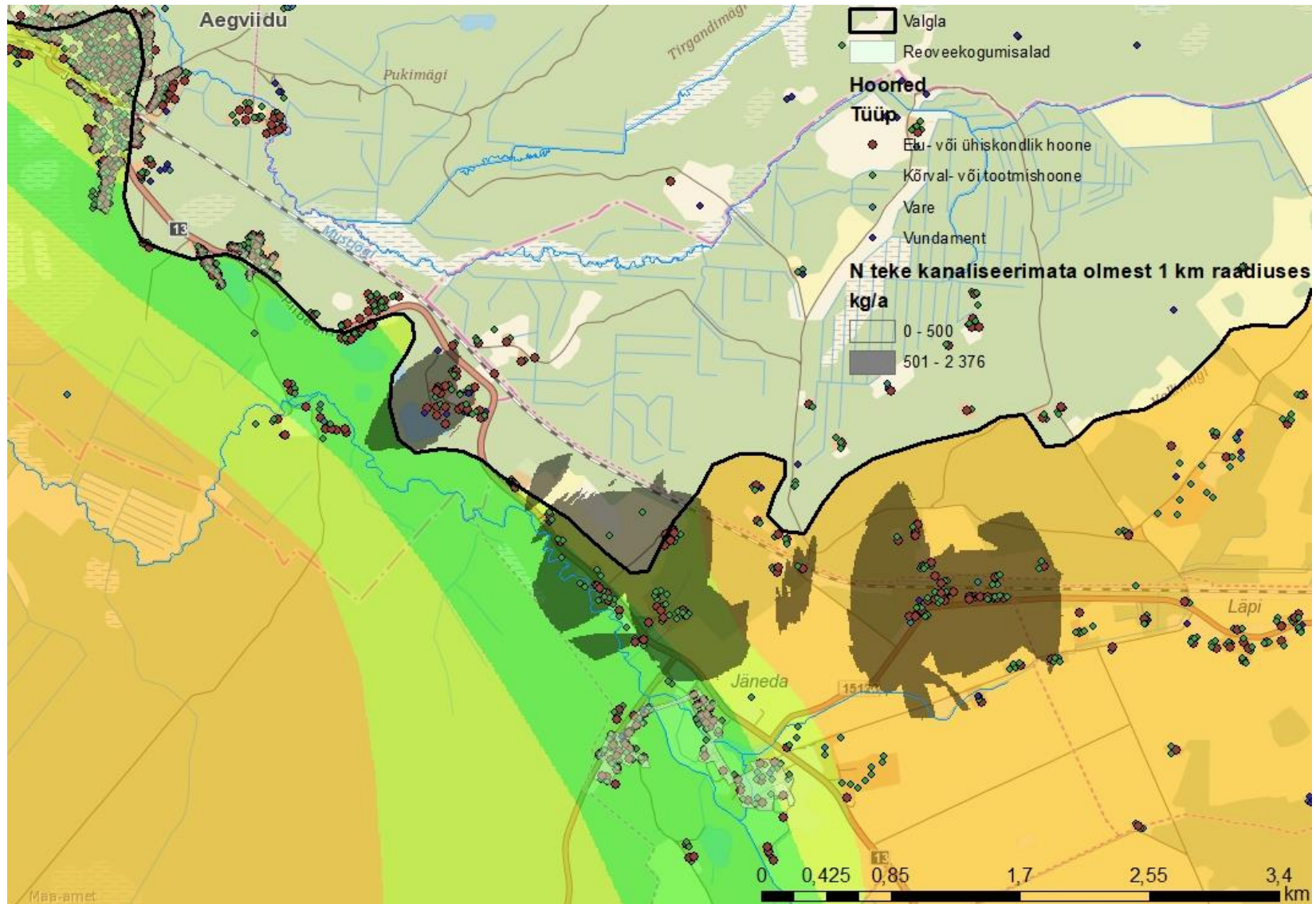


# Jäneda hooned

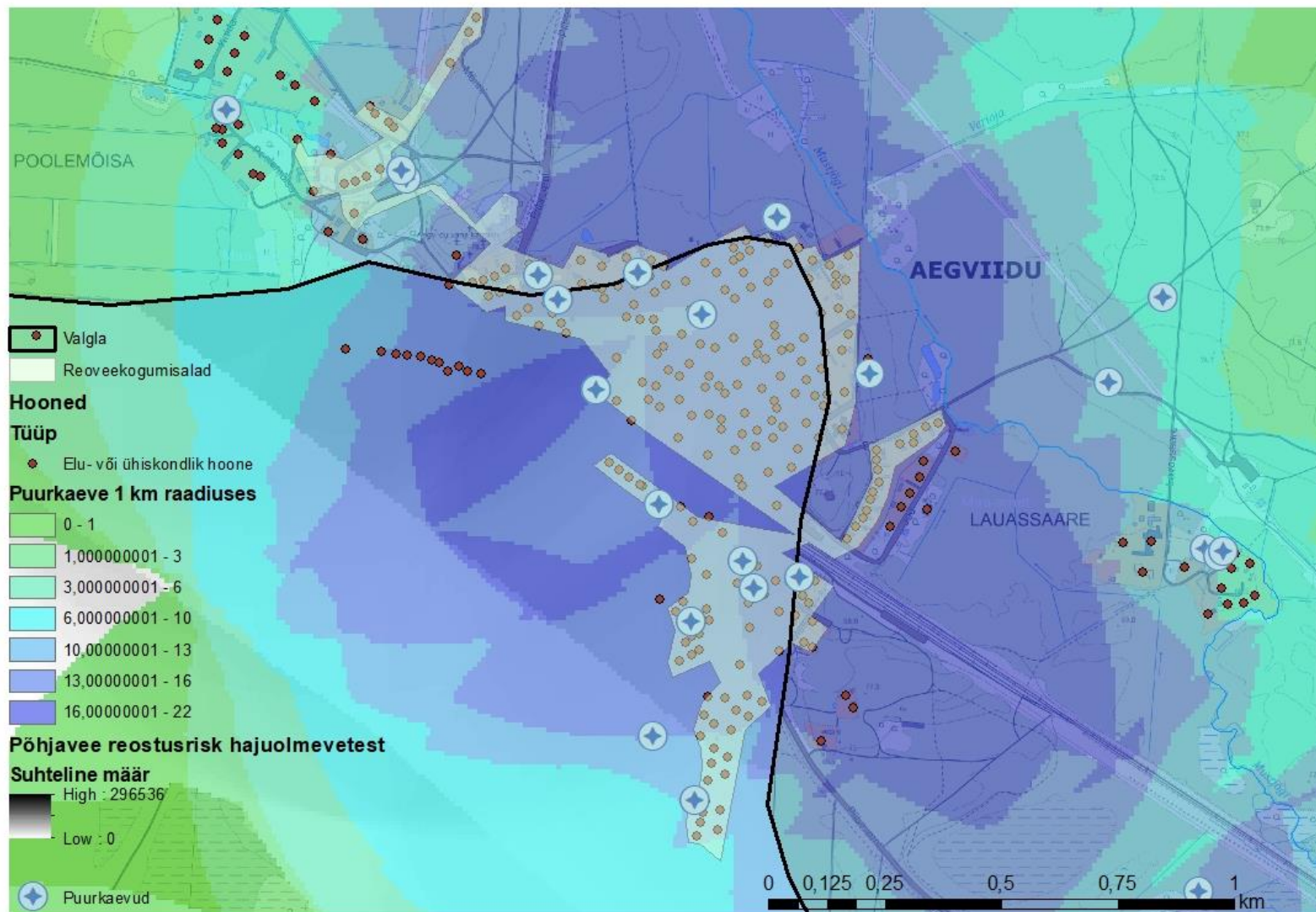




# Reovee surve põhjaveele

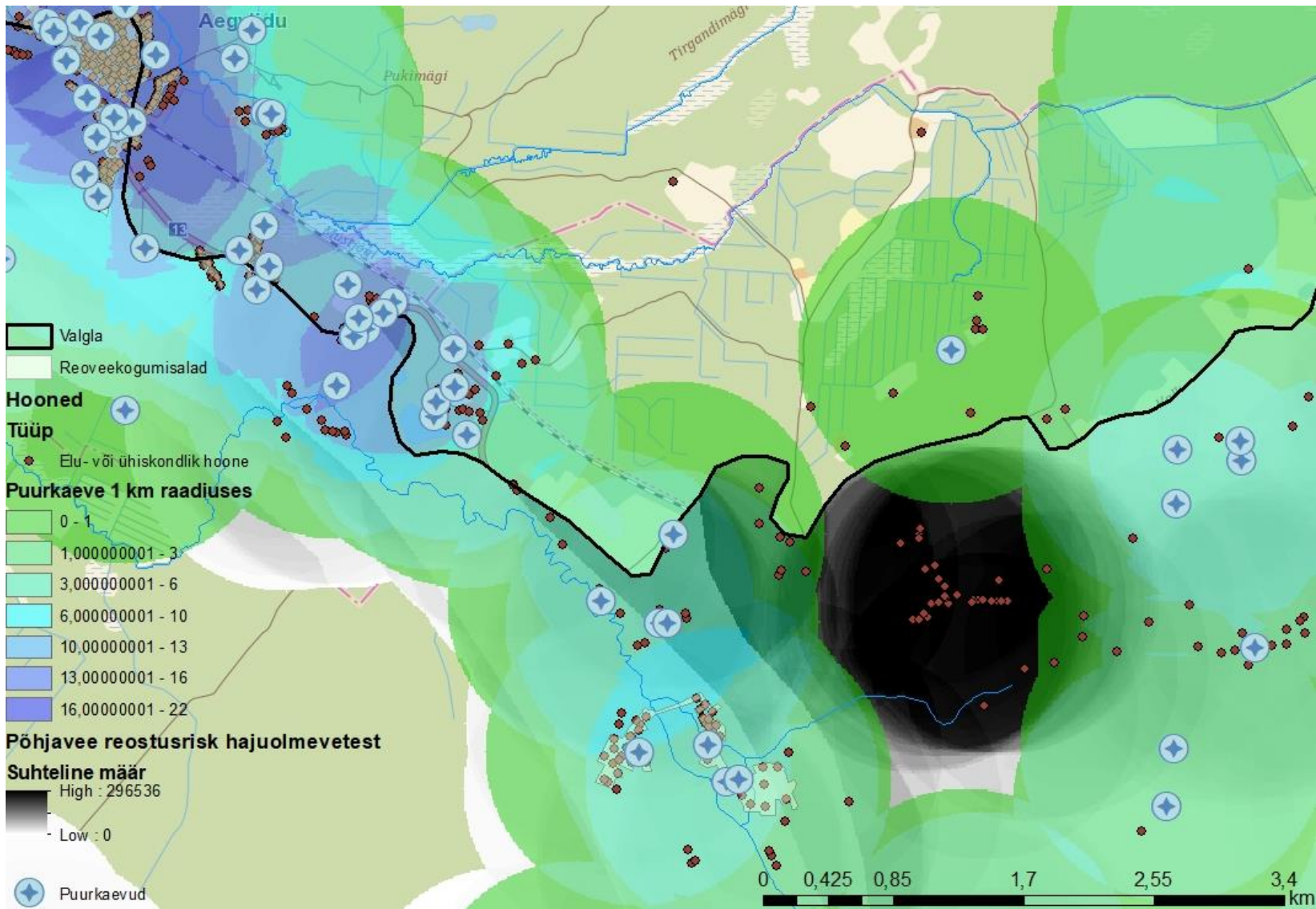


# Reostuse risk Aegviidus

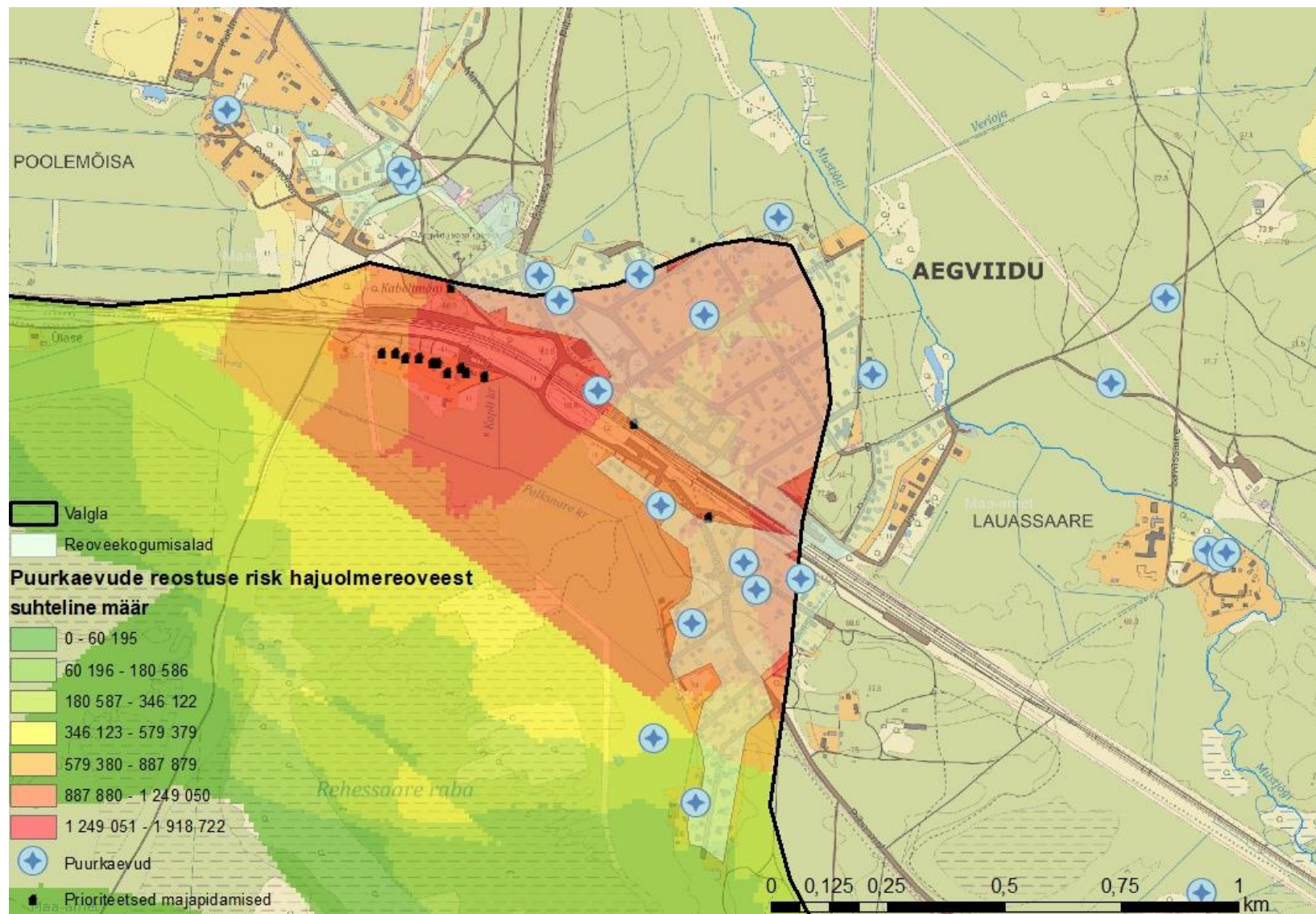




# Reostuse risk Jänedal



# Reovee mõju joogiveele



# Lõpp