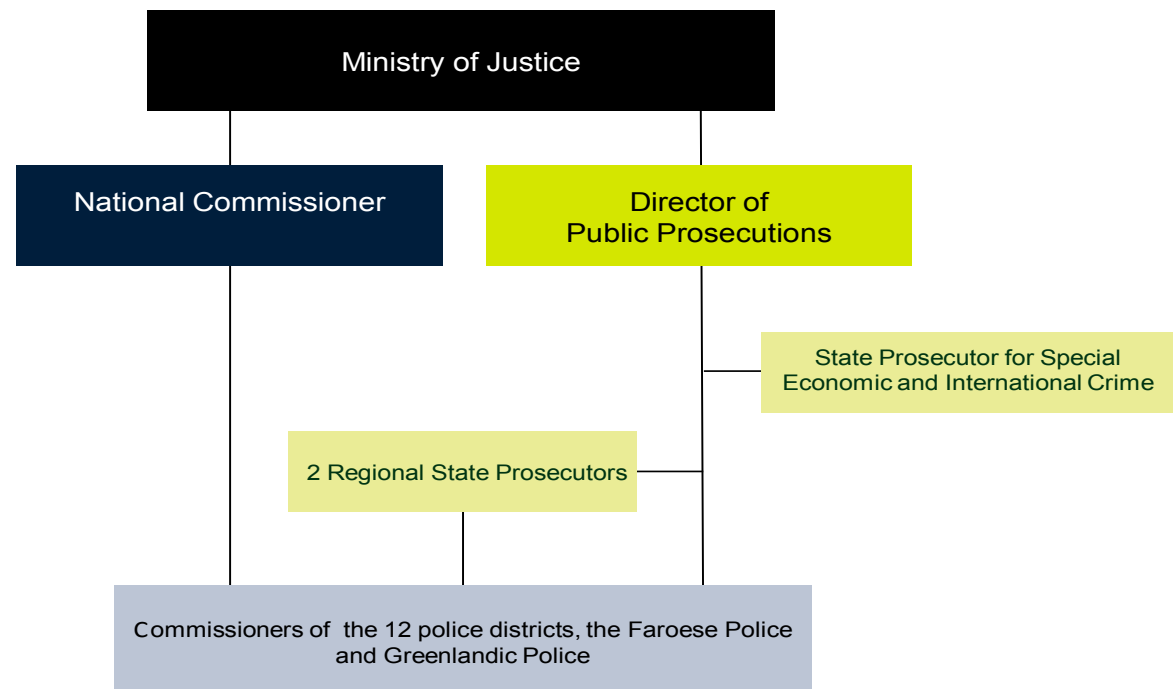


# Whistleblower Scheme in The Danish Police

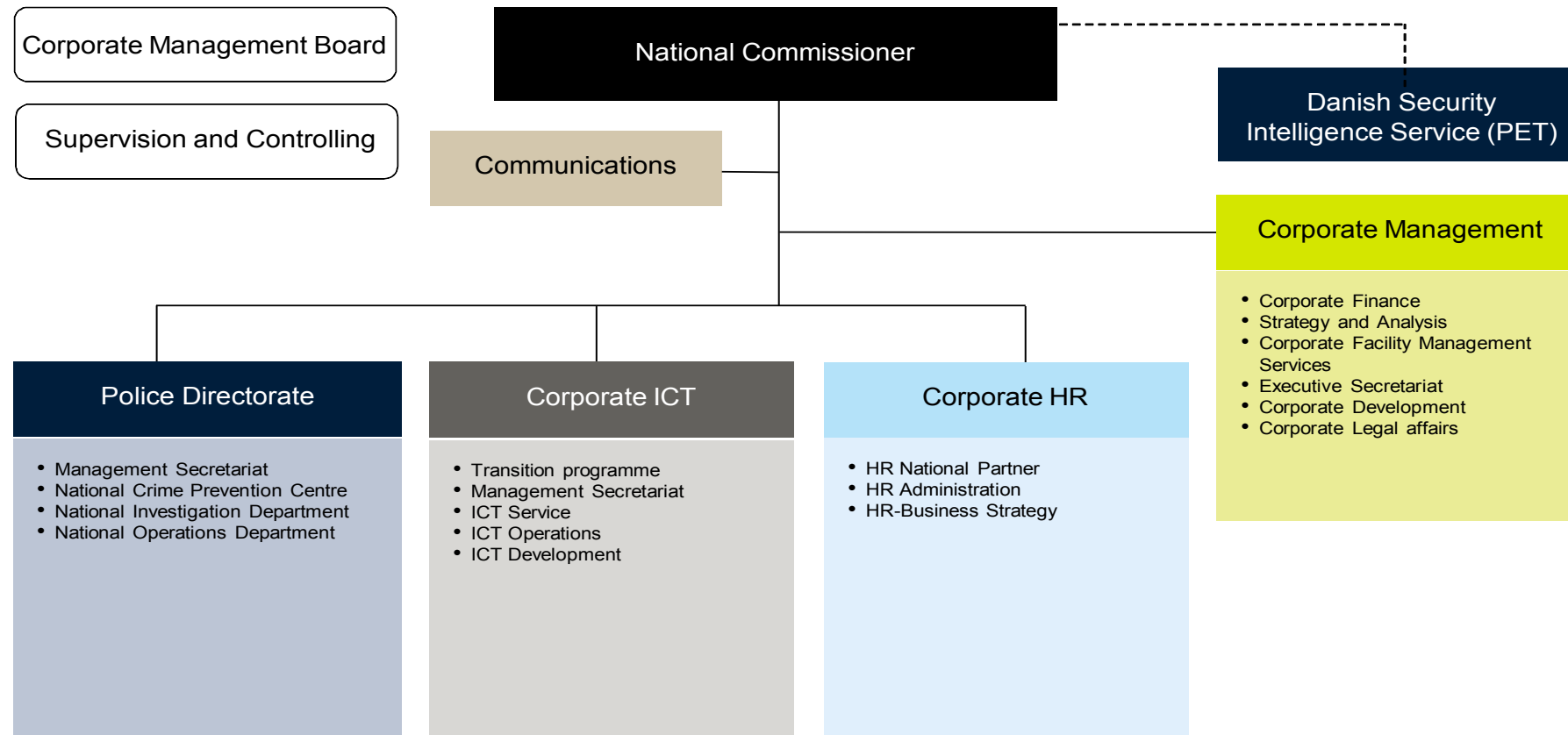
Vibeke Møgelvang and Line Seldal  
October 2019



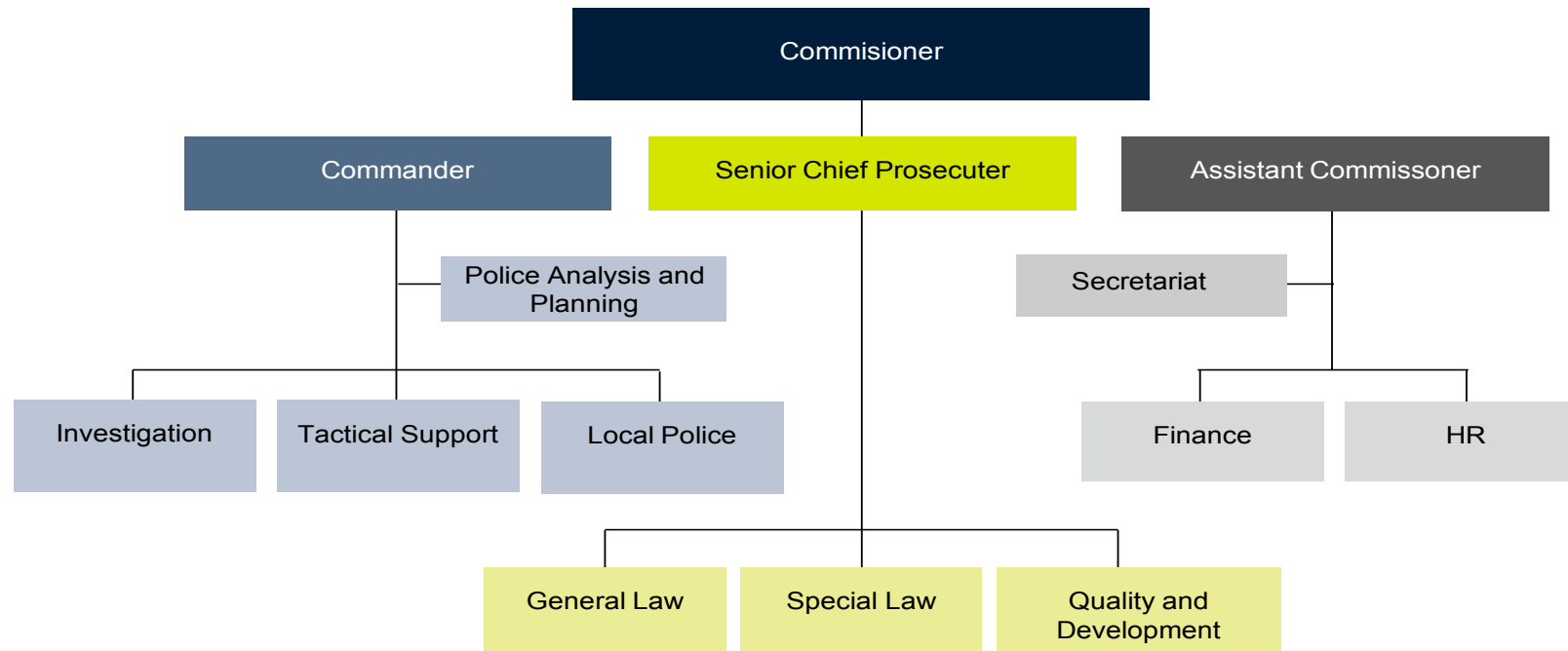
# Police and Prosecution Service 2019



# Danish National Police 2019



# Police districts 2019



# The Unit of Supervision and Controlling - Background

- The Unit of Supervision and Controlling was established in may 2017 (7 + 1 employees)
- Purpose:
  - To strengthen focus on compliance to principles on "good public financial management"
  - To strengthen the ability of the organization to discover and handle problems "in time"
  - To strengthen the internal control environment and the monitoring ability
- Annual audits, incl. Payroll- and IT-audits are carried out by The Danish National Audit Office. They also carry out major studies and performance audits

# Whistleblower Scheme in The Danish Police - Background

- The Ministry of Justice – First ministry in DK to establish a whistleblower scheme in the authorities: March 1, 2019
  - Department of Justice
  - National police and Security Intelligence Service (PET)
  - Prosecution Service
  - Probation Service
- No law regarding the protection of whistleblowers -> administrative scheme, based on guidelines from the Ministry of Justice

# Principles

**We want to have an open culture** where employees can approach their leaders, colleges, The Human Resource Dep., union representatives or work environment representatives if they experience illegal or serious irregularities

- The Whistleblower Scheme **offers an additional opportunity** for the employees to have their say and to raise significant issues
- The Whistleblower Scheme is **a supplement** to the direct and daily dialogue at work
- The Whistleblower Scheme aims **to put an end to misconduct and illegal actions and to ensure that the police act according to rules and regulations and follow the requirements of "good public management and conduct"**
- The scheme must not be used as an opportunity to harass colleges, employees or leaders

# Prerequisites for success

- A successful whistleblower scheme must build on:
  - A promise of confidentiality
  - A promise of action
  - A constructive aim



# Whistleblower Scheme in The Danish Police - Concept

- **Who?**

- All employees in The Danish Police (+ employees in the "local" prosecution service in the 12 police districts) and collaborators to The Danish Police

- **Which information?**

- Illegalities
- Serious or repeated violations of the law
- Serious or repeated violations of principles of administrative law
- Serious or repeated violations of essential internal regulations
- Serious person-related conflicts on work
- Deliberate misrepresentation of citizens and collaborators

- **Not:**

- Violation of less important internal regulations
- Less serious person-related conflicts

- **And not:**

- Cases handled by The Independent Police Complaints Authority
- Complaints about dispositions and conduct, cases concerning criminal law

# Whistleblower Scheme in The Danish Police – Access and process

[Forside](#) / [Om politiet](#) / [Virksomheden](#) / **Sådan klager du over politiet**



## Sådan klager du over politiet

Du har mulighed for at klage over politiets dispositioner og adfærd og anmelde strafbare forhold begået af politiet.

### // Politiets dispositioner

Du kan klage over politiets ordenshåndhævelse, efterforskning og sagsbehandling.

### // Politipersonalets adfærd

Du kan klage over politipersonalets adfærd i tjenesten.


### // Strafbare forhold begået af politipersonale

Du kan anmelde strafbare forhold begået af politipersonale i tjenesten.

### // Whistleblowerordningen

Du kan som ansat i politiet eller som samarbejdspartner til politiet indsende oplysninger om kritisable forhold i politiet.


# Whistleblower Scheme in The Danish Police – Access and process


  
JUSTITS MINISTERIET


Har du tidligere afleveret oplysninger? Indtast din nøglekode.


## Whistleblowerordningerne på Justitsministeriets område

Vælg den myndighed, dine oplysninger vedrører:

  
JUSTITS MINISTERIET  
Oplysninger vedr. Justitsministeriets departement

  
KRIMINAL FORSORGEN  
Oplysninger vedr. Kriminalforsorgen

  
RIGSADVOKATEN  
Oplysninger vedr. Rigsadvokaten og statsadvokaterne

  
POLITI  
Oplysninger vedr. Rigspolitiet, Politikredsene samt Grønlands Politi og Færøernes Politi

# Whistleblower Scheme in The Danish Police – Access and process

JUSTITISMINISTERIET

Status for henvendelsen

Log ud

Henvendelse

Kontekst

Oprettelsesdato

Seneste opdatering

Udløbsdato

Forbindelse

Status for henvendelsen

Oplysninger vedr. Rigspolitiet,  
Politikredsene samt Grønlands Politi og  
Færøernes Politi

01-03-2019 11:41

01-03-2019 11:41

31-05-2019 02:00

HTTPS

Ny

Svar på spørgeskemaet

Trin 1: Beskrivelse

Hvad vil du oplyse om?  
Skriv gerne så mange oplysninger som muligt

Dit tilhørsforhold til myndigheden  
Ansæt

Trin 2: Supplerende oplysninger

Supplerende spørgsmål

Hvornår har forholdet/forholdene fundet sted?

Hvordan har du fået kendskab til oplysningerne?

Hvilke personer eller enheder kunne vide mere om forholdet/forholdene?

Hvilke personer eller enheder er involveret i forholdet/forholdene?

Trin 3: Vedhæftninger

Trin 4: Evt. kontaktoplysninger

Kontaktoplysninger

Navn

E-mail adresse

Telefonnummer

Funktion/stilling

Tjenestested/arbejdsplads

Trin 5: Indsend oplysninger

Indsend oplysninger

# Whistleblower Scheme in The Danish Police – Access and process

**Vedhæftelser**

Ingen filer er blevet uploadet!

Tilføj fil

**Kommentarer**

0/4096

Send

Powered by [GlobaLeaks](#)

# Whistleblower Scheme in The Danish Police – Access and process



Dine oplysninger er indsendt.

## Tak!

Din henvendelse er registreret. Du skal huske at skrive koden ned, da du ellers ikke har mulighed for logge ind igen og følge med i din sag. Husk pen og papir!



Husk din nøglekode for din henvendelse.

2738 3572 3913 8727

Dine oplysninger er nu modtaget i whistleblowerportalen, og der er sendt en mail til den ansvarlige afdeling i myndigheden om dette. Den ansvarlige afdeling vil hurtigst muligt inden for almindelig kontortid behandle din henvendelse.

Brug den 16 cifrede nøglekode til at logge ind med. Det giver dig adgang til, at se om der er skrevet tilbage til dig, og samtidig give dig adgang til at indsende flere oplysninger og dokumenter.

Gennemse din henvendelse

Hint: Hvordan skjuler du din nøglekode

En smart måde at gemme din nøglekode på, er at skrive den ned som nummeret på et kreditkort, fx. ved også at tilføje en udløbsdato.

Eksempel:

