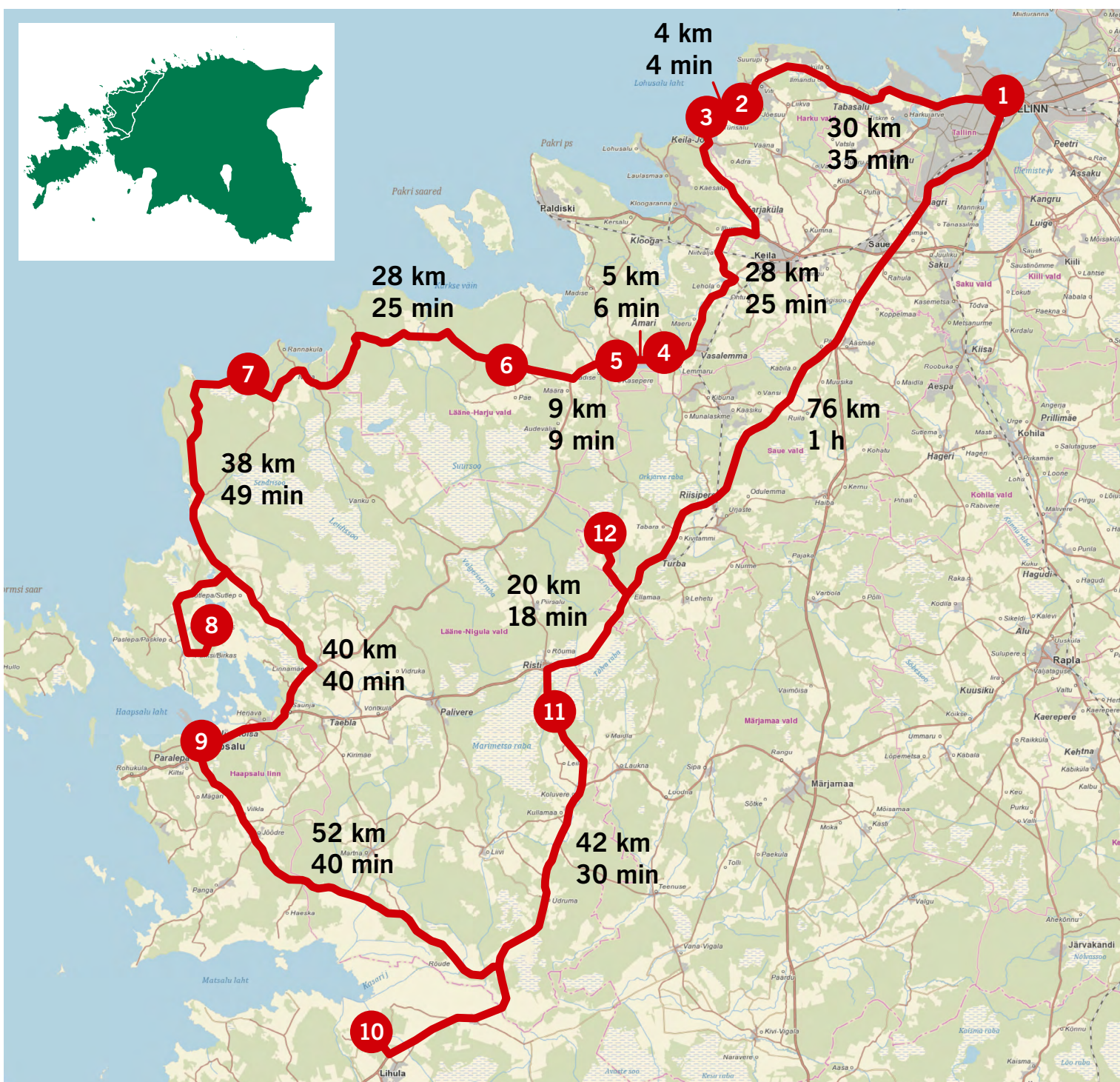


350 km

NÕVA

TOURING ROUTE

This touring route takes you from the Estonian capital Tallinn to Nõva Recreation Area and to the sights nearby and back to Tallinn. On your way you can see picturesque landscapes in Türisalu cliff, Keila-Joa park and Rummu quarry; visit Padise monastery and Risti church; make short hikes and have a picnic on campfire sites of Nõva Recreation Area; visit seaside resort town Haapsalu; discover Matsalu National Park, and travel back to Tallinn. Depending on how many sites you visit and how much time you decide to spend on each one, the tour can last from 2-5 days or even longer, if you wish to explore the area more thoroughly. You can find additional information about West Estonia www.westestonia.com/en/.



1. Tallinn. You can hit the road towards Nõva Recreation Area right away or first explore the capital of Estonia. Since the route brings you back to Tallinn, the city sightseeing can also be left at the end of the travel. Read more about Tallinn www.visitestonia.com/en/where-to-go/tallinn.

2. Türisalu Cliff – part of Baltic klint that has height up to 31 meters, read more www.visitestonia.com/en/turivalu-klint-and-platform and www.loodusegakoos.ee/where-to-go/recreation-areas/the-surroundings-of-tallinn-recreation-area/turivalu-cliff-parking-area.

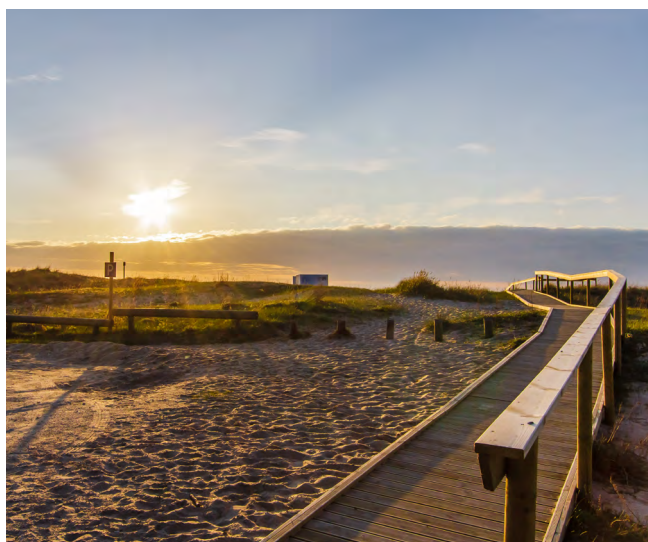
3. Keila-Joa park – The English landscape park with the centre element of Keila river and a 6,1 meter high and 70 meter wide waterfall. Read more www.loodusegakoos.ee/where-to-go/recreation-areas/the-surroundings-of-tallinn-recreation-area/rmk-keila-joa-park.

4. Rummu Quarry – a submerged limestone quarry has turned into blue lagoon, read more www.visitestonia.com/en/rummu-quarry.

5. Padise Monastery – monastery built by the Cistercians in the 14th century, read more www.padise.ee/en/.

6. Church of the Holy Cross in Harju-Risti – 700-year-old church with massive walls with the oldest church bell in Estonia (14th or 15th century). Read more www.visitestonia.com/en/church-of-the-holy-cross-in-harju-risti.

7. Nõva Recreation Area. The recreation area is located about an hour drive away from Tallinn. The area offers great diverse opportunities from berry picking, hiking to a fun day at the beach. Read more www.loodusegakoos.ee/where-to-go/recreation-areas/nova-recreation-area.



NÕVA VISITOR CENTRE

Before exploring Nõva Recreation Area go to Nõva Visitor Centre, where you can get the most up to date information about the sites. Read more about the visitor centre www.loodusegakoos.ee/where-to-go/recreation-areas/nova-recreation-area/nova-visitor-centre.



HIKING ROUTE

RMK hiking route is a network of three long trails going from state border to border. These trails go through all of Estonia, through different national parks and nature reserves. You can hike the full route or pick a section you like. The 820 km long Peraküla-Aegviidu-Ähijärve hiking route starts at the Nõva Visitor Centre. Pick a small section or hike through the whole route. Ask for more information from the visitor centre and read more about hiking route www.loodusegakoos.ee/where-to-go/hiking-route.

TRAILS

If you prefer shorter hikes, the area offers various opportunities. Some examples:

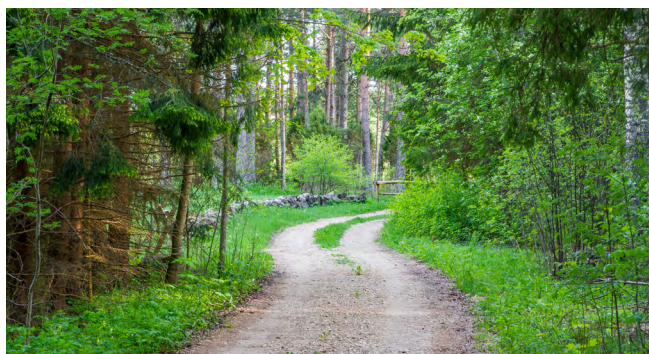
Marimetsa hiking trail – a 9 km long trail in Marimetsa Nature Reserve, read more www.loodusegakoos.ee/where-to-go/recreation-areas/nova-recreation-area/marimetsa-hiking-trail-10-dot-5-km;

Liivaseranna-Peraküla study trail – along the 4.4 km long trail you can see both young and older pine forests, sand dunes, swampy areas and lakes, read more www.loodusegakoos.ee/where-to-go/recreation-areas/nova-recreation-area/liivaseranna-perakula-study-trail-4-dot-4-km;

Jugapuulaane study trail – 3.5 km long trail starts at the Nõva Visitor Centre. Cycling is recommended, but the trail is also suitable for walking. Read more www.loodusegakoos.ee/where-to-go/recreation-areas/nova-recreation-area/jugapuulaane-study-trail-3-dot-5-km;

Liivanõmme study trail – 7.5 km long trail starts and ends at Lake Allikajärv, read more www.loodusegakoos.ee/where-to-go/recreation-areas/nova-recreation-area/liivanomme-study-trail-7-dot-5-km;

Forestry study trail – a 1.5 km long trail starts next to the Nõva Visitor Centre, the trail goes through clearcut areas and different types of forests. Read more www.loodusegakoos.ee/where-to-go/recreation-areas/nova-recreation-area/forestry-study-trail-1-dot-5-km



CAMPSITES AND CAMPFIRE SITES

RMK campsites are suitable stops for the hikers to prepare a meal, take a rest and spend the night. Campsites are equipped with fireplaces, tables, benches, woodsheds and dry toilets. You can choose from:

Peraküla campsite famous for its singing sands and the clean sea, read more www.loodusegakoos.ee/where-to-go/recreation-areas/nova-recreation-area/perakula-campsite;

Veskijärve campfire site at Läänemaa Suursoo Landscape Reserve, read more www.loodusegakoos.ee/where-to-go/recreation-areas/nova-recreation-area/veskijarve-campfire-site;

Tänavjärve campfire site at Läänemaa Suursoo Landscape Reserve, read more www.loodusegakoos.ee/where-to-go/recreation-areas/nova-recreation-area/tanavjarve-campfire-site;

Keibu campfire site I – a site for camping and resting with a good swimming place at Keibu bay, read more www.loodusegakoos.ee/where-to-go/recreation-areas/nova-recreation-area/keibu-campfire-site;

Keibu campfire site II at Keibu bay, read more www.loodusegakoos.ee/where-to-go/recreation-areas/nova-recreation-area/keibu-campfire-site-ii;

Uuejõe sauna campfire site located in a river bend, read more www.loodusegakoos.ee/where-to-go/recreation-areas/nova-recreation-area/uuejoe-sauna-campfire-site;

Allikajärve campfire site – a private campfire site on the shore of the beautiful Lake Allikajärv, read more www.loodusegakoos.ee/where-to-go/recreation-areas/nova-recreation-area/allikajarve-campfire-site;

Lepaaugu campfire site, at a small fish-rich lake, read more www.loodusegakoos.ee/where-to-go/recreation-areas/nova-recreation-area/lepaaugu-campfire-site;

Uuejõe campfire site in a peaceful location on the shore of the disappearing Lake Flyvae and the Uuejõe River, read more www.loodusegakoos.ee/where-to-go/recreation-areas/nova-recreation-area/uuejoe-campfire-site;

Vihterpalu campfire site – a nice small campfire site by the Vihterpalu river, read more www.loodusegakoos.ee/where-to-go/recreation-areas/nova-recreation-area/vihterpalu-campfire-site.



REST STOPS

Pöösaspea rest stop – one of the best sites for watching the migration of arctic seabirds, read more www.loodusegakoos.ee/where-to-go/recreation-areas/nova-recreation-area/poosaspea-recreation-site;

Toatsejärve rest stop – on the shore of a picturesque forest lake, read more www.loodusegakoos.ee/where-to-go/recreation-areas/nova-recreation-area/toatsejarve-recreation-site;

Salajõe rest stop at the edge of Salajõe Landscape Reserve, read more www.loodusegakoos.ee/where-to-go/recreation-areas/nova-recreation-area/salajoe-recreation-site;

Peetri stone rest stop at the stone of cultural heritage, read more www.loodusegakoos.ee/where-to-go/recreation-areas/nova-recreation-area/peetri-stone-recreation-site



Õmma forest hut – a solitary forest hut in the middle of wild nature, read more www.loodusegakoos.ee/where-to-go/recreation-areas/nova-recreation-area/omma-bog-forest-hut.



8. Saare study trail 1 km at Silma Nature Reserve – you can listen to the song of great reed warbler, the incessant reeling of Savi's warbler, and the call of the Eurasian bittern, which resembles the sound of blowing in a bottle, read more www.loodusegakoos.ee/where-to-go/nature-reserves/silma-nature-reserv/saare-study-trail-2-dot-3-km.

9. Haapsalu – a seaside resort town in West Estonia, read more www.visithaapsalu.com/?lang=en.

10. Matsalu National park and visitor centre – one of the most important wetland bird areas in Europe, read more www.loodusegakoos.ee/where-to-go/national-parks/matsalu-national-park and www.visitestonia.com/en/where-to-go/west-estonia/matsalu-national-park. For more up to date information go to the Visitor Centre of Matsalu National Park (read more www.loodusegakoos.ee/where-to-go/national-parks/matsalu-national-park/visitor-centre-of-matsalu-national-park).



11. Marimetsa trail – on the way back to Tallinn there is a great opportunity to make a 9 km long hike on an out-and-back trail that runs along a forest divide, across a meadow and through a spruce forest along the banks of the Marimetsa stream, the boardwalk at the end of the trail leads you across the fen, raised bog and transitional mire to bog pools. Read more www.loodusegakoos.ee/where-to-go/recreation-areas/nova-recreation-area/marimetsa-hiking-trail-10-dot-5-km.

12. Valgejärve Nature Trail introduces Valgejärve Nature Reserve and the natural assets around it. The trail is 6.5 km long, read more www.loodusegakoos.ee/where-to-go/recreation-areas/the-surroundings-of-tallinn-recreation-area/valgejarve-nature-trail-6-dot-5-km.