



The sliding terrace door "Aru patio PARALLEL 60 CLASSIC" is the classic sliding patio door on parallel rails. This is the ideal solution when maximum glass area is required. This also has an almost level threshold. Constructed from Pine, Oak or Meranti.

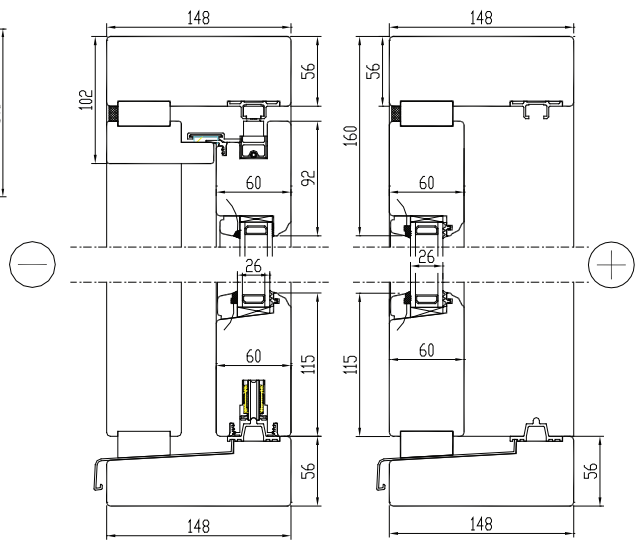
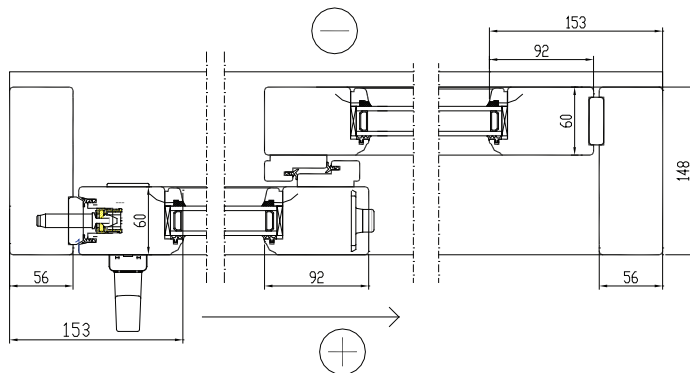


The standard solution allows the door to be locked only from the inside, but is also available to lock the door from both sides.

Aru patio PARALLEL 60 CLASSIC

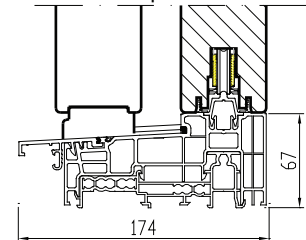


SIDE-SLIDE OPENING 2-LEVEL TERRACE DOOR



Standard - wooden threshold with alu cover

Option - aluminium-profile threshold

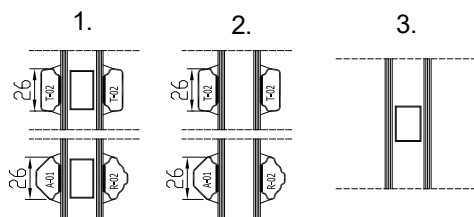


GLASS

Double or triple glazing, 26 mm ($U_g \geq 1,1 \text{ W/m}^2\text{K}$)
 Glazing from the inside with wooden glazing bead
 Fastened with hidden nail, sealed with silicone

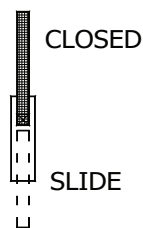
GLAZING BAR OPTIONS

1. Glued on both sides+slats inside the glazing (Norwegian style)
2. Glued on both sides (Georgian style)
3. Bars inside the glazing



TIMBER FINISHING
 with water-based paint
 or stain

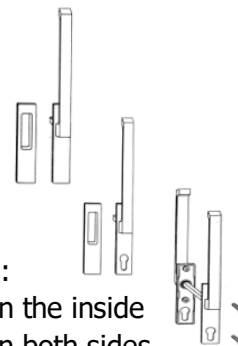
HANDLE POSITIONS:



Standard handleset:
 pull handle.

Possible additions:

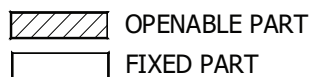
1. cylinderlock on the inside
2. cylinderlock on both sides



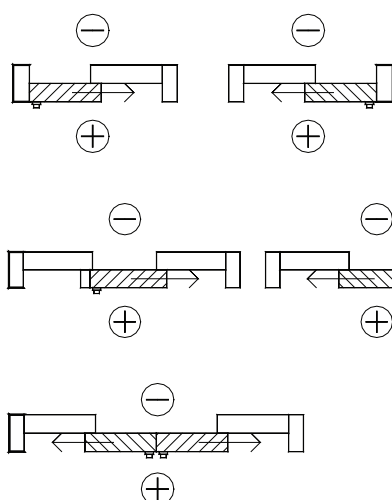
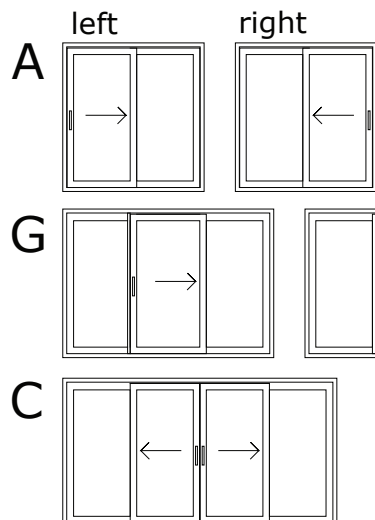
OPENING:

All views from inside.

Sash weight max 300 kg



Dimensions (mm)



	<i>min</i>	<i>max</i>
width	1430	6630
height	1990	2874
G		
width	2134	9000
height	1990	2874
C		
width	2731	9000
height	1990	2874