



The "Aru 78 SOFTLINE IN" window with the angular profile sash and frame is an inward opening wooden window with a profile which is suitable for a modern energy saving building. The larger frame is designed to accommodate triple glazing. This increases insulation values enough for use in a so-called passive house.



A stained pine window.



A three-layered window, the bottom frame and sash are protected with aluminium glazing beads. There's an option of using a choice of handles.

Aru 78 SOFTLINE IN

INWARD OPENING, TILT AND TURN WOODEN WINDOW

PROFILE IV/78

Jamb: 78 x 78 mm

Frame: 78 x 78 mm

Inside groove for windowcill, outside for aluminium cill
Aluminium slat on the lower part of the frame

FURNITUR

Fittings: ROTO NT

Handle: ROTO, HOPPE



GLASS

Triple glazing 42 mm ($U \geq 0,56 \text{ W/m}^2\text{K}$)

Glazing from the inside with wooden glazing bead

Fastened with hidden nails, sealed with silicone

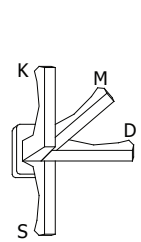
SEAL

2-chamber seal surrounding middle frame rebate

FINISHING

with water-based paint or stain

Handle positions



tilt



microventilation
(on request)



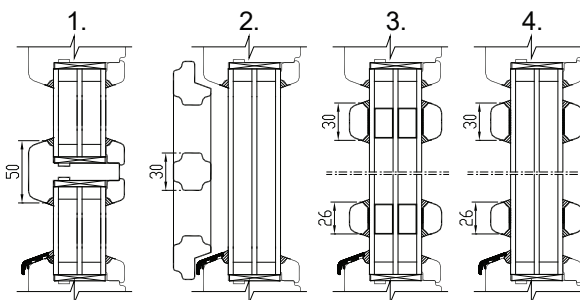
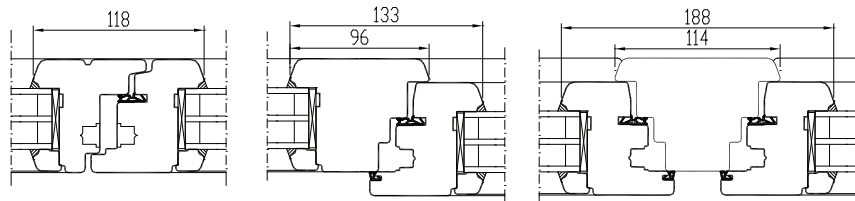
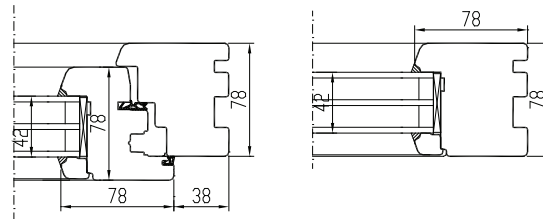
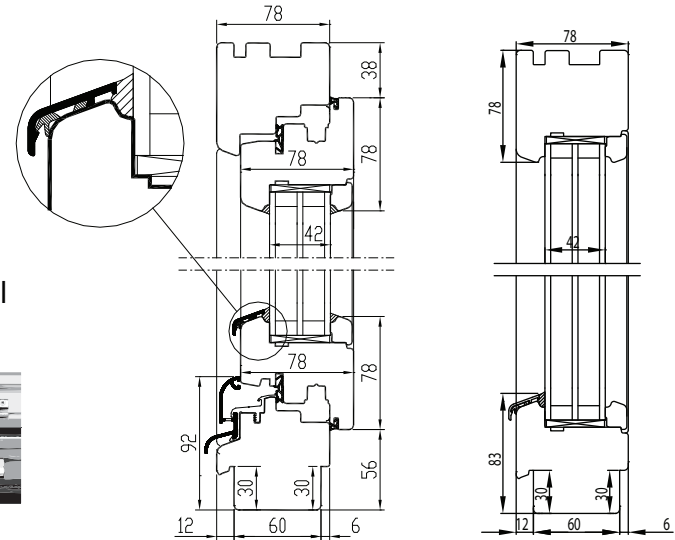
turn



closed

GLAZING BAR OPTIONS

1. Penetrating bars 50 mm
2. Bar frame on the hinges
3. Taped bars Norwegian style
4. Taped bars Georgian style



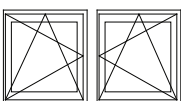
OPENING:

Inside view



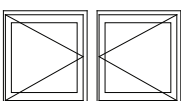
F - FIXED

2x or 3x glazing in the frame. Aluminium slat on the lower part of the frame
min measures 330 x 330 mm



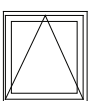
DK - TILT AND TURN (LEFT / RIGHT)

min max L=410...1710 mm H=408...2720 mm, weight max 130 kg



D - SIDEHUNG (LEFT / RIGHT)

min max L=380...1710 mm H=408...2720 mm, weight max 130 kg

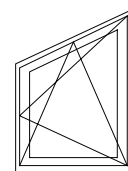


KIPP - TOPHUNG (Handle above)

min max L=420...2510 mm H=350...1927 mm, weight max 80 kg

NB! Maximum and minimum dimensions and opening possibilities also depend on the aspect ratio.
Please ask our specialists for additional information.

Triangular window



Round-headed window

