

PRESENTATION

design -production -assembly



PÄRNU LOG HOMES®

Contact: Raiko Gustavson
Phone: +372 5053813, Fax: +372 4460606
www.loghome.ee , E-mail: raiko@loghome.ee

ROI
kasum

Cost leadership

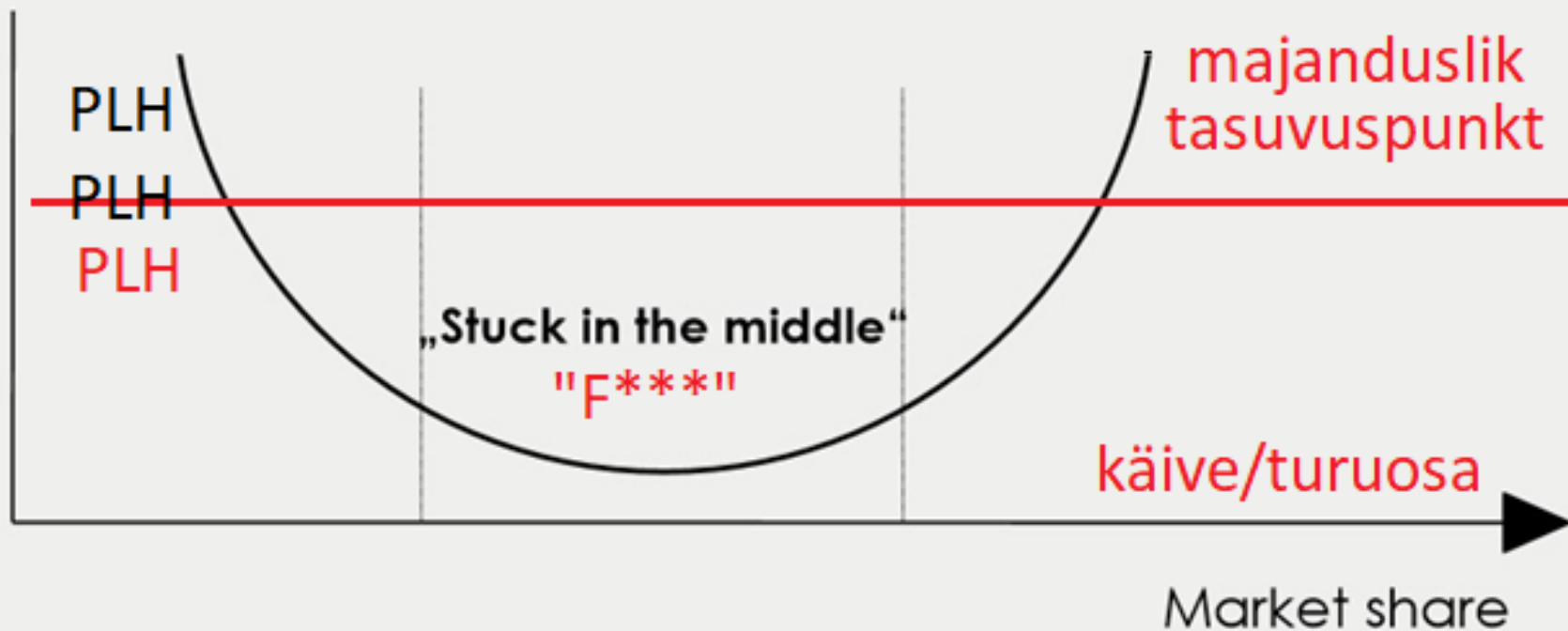
Differentiation

Niche focus

Harmet

Kodumaja

???



Pärnu Log Homes ® - contemporary log homes
to suit your individual needs

DESIGN, PRODUCTION AND ASSEMBLY

We are combining heavy timbers with modern solutions

Our focus is on style that is called
“Stavlaft” in Norway and
„Post & Beams“ in other places



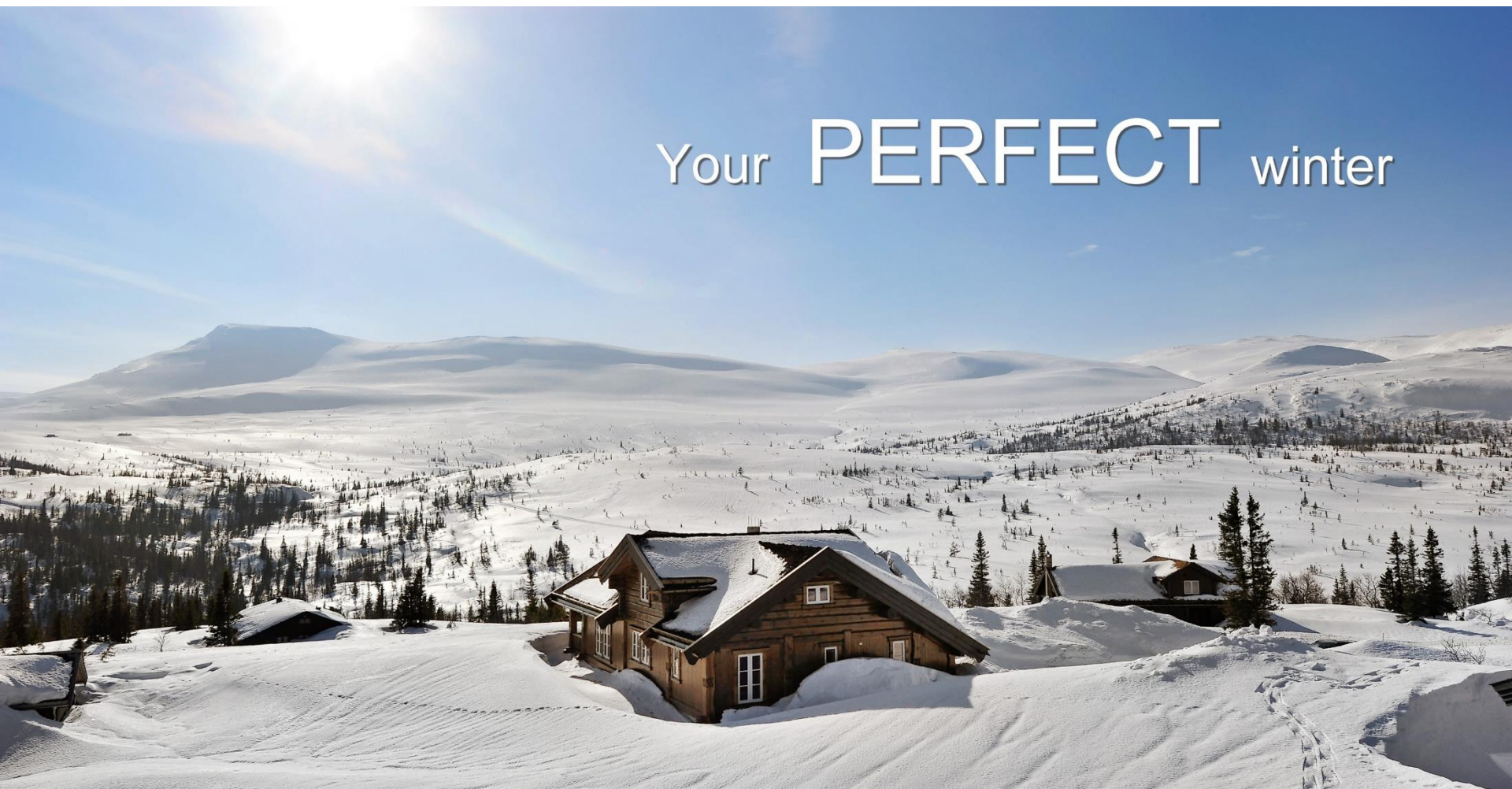


Your house of **STYLE**



Your **DREAM** hideaway

Your PERFECT winter





Your weekend
GETAWAY



Your **LIFESTYLE**



Classical Norwegian mountain cabin „Stavlaft“ – Geilo, Norway 2016



Apartment buildings with Post and Beams – Geilo, Norway 2016



Unique Mountain Villa with Post & Beams and cladded with Canadian Red Cedar Hemsedal, Norway 2017



Canadian Red Cedar

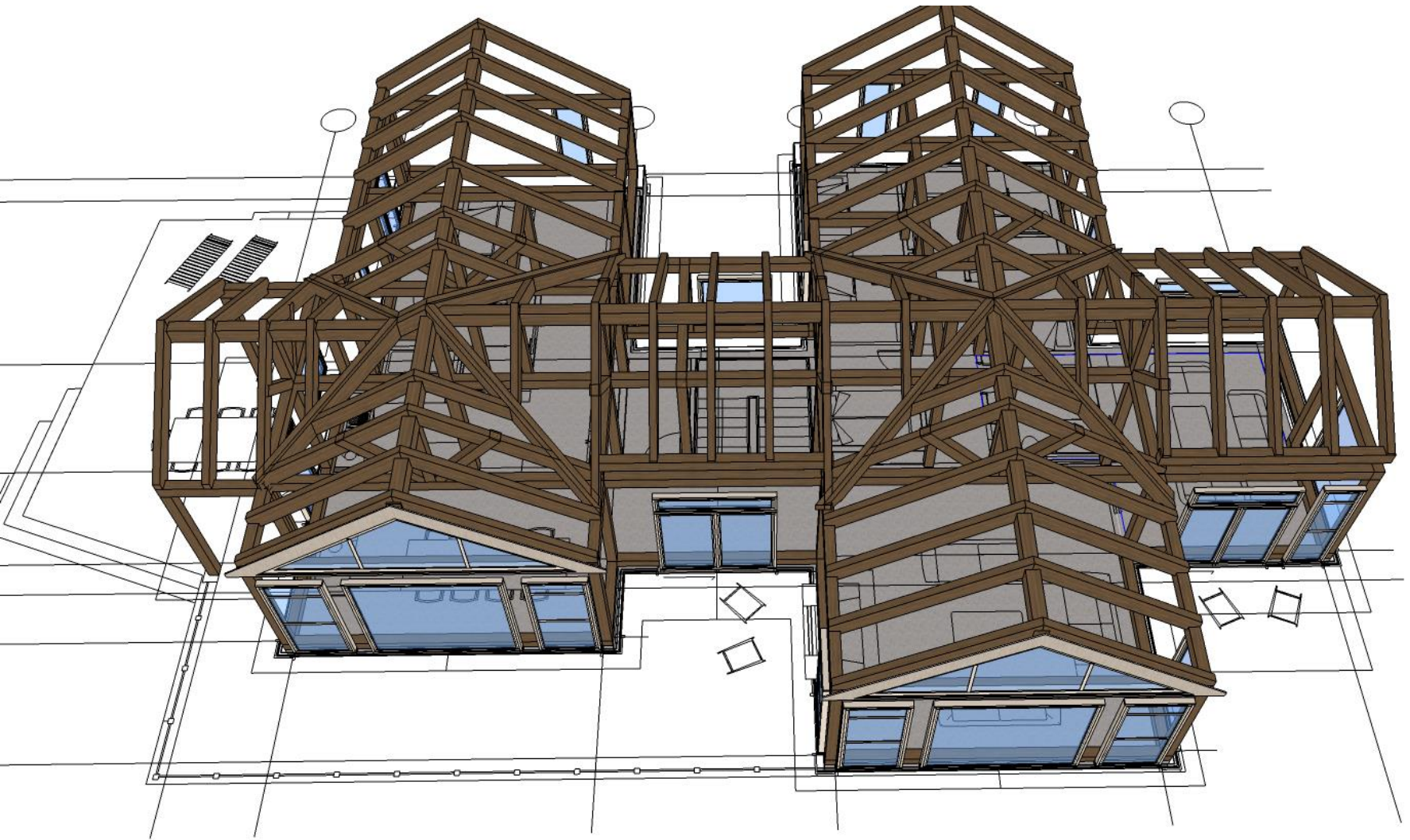


Interior with American Post and Beams





3D CAD/CAM Project design and CNC production ([Link to 1,5 min video](#))



3D CAD/CAM Project design and CNC production ([Link to 1,5 min video](#))

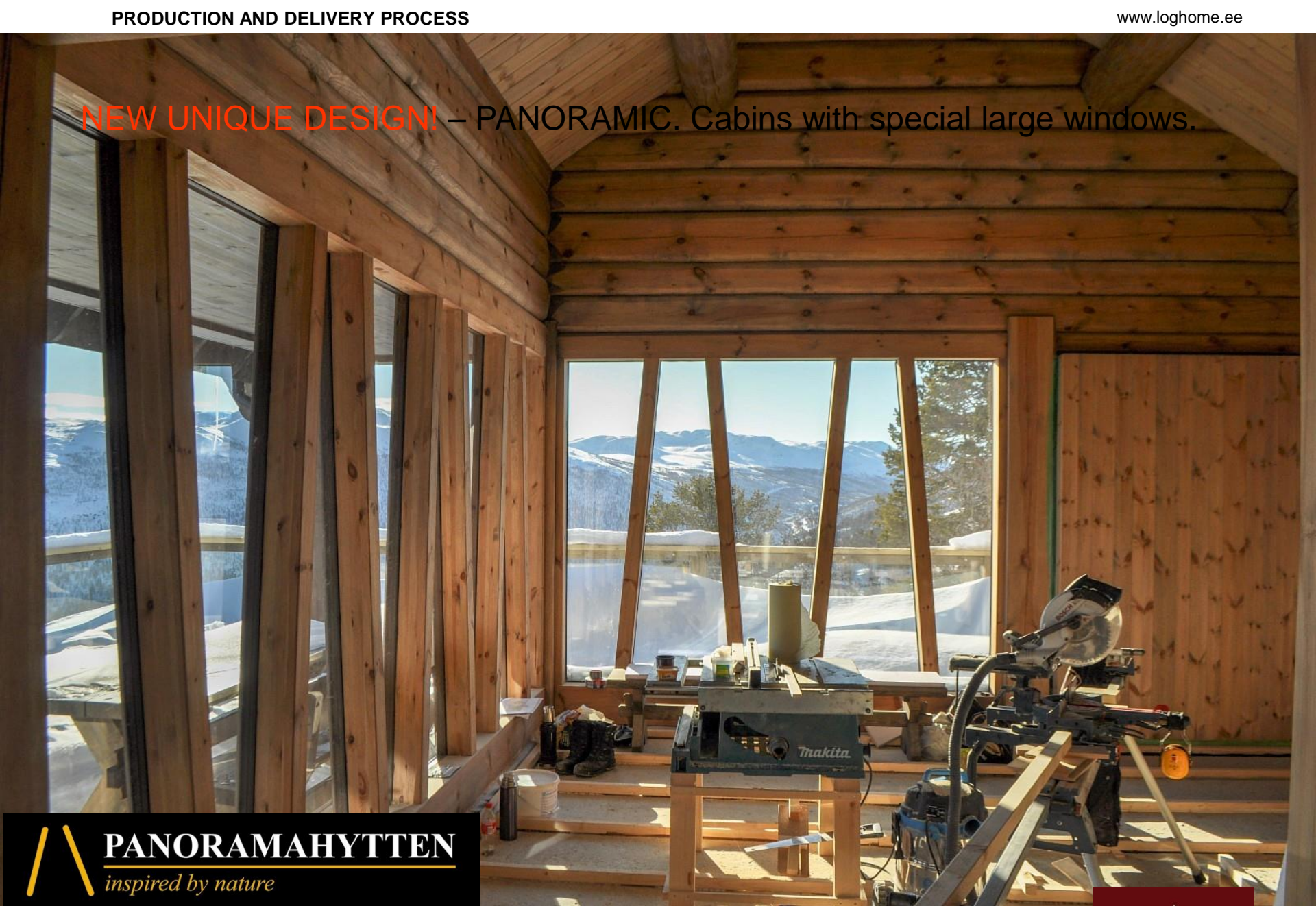


NEW UNIQUE DESIGN! – PANORAMIC. Cabins with special large windows.



PANORAMAHYTTEN
inspired by nature

NEW UNIQUE DESIGN! – PANORAMIC. Cabins with special large windows.



Interior colors by Jotun, Osmo, etc.



Colorless interior



Transparent interior (stained cladding, timber)



Intensive painted interior



Options for interior colors - THE CHOICE IS YOURS!

OUR UNIQUE FACADE DESIGN! – special pine facade planks with blacksmith forging nails



2-4 days *“timber shell”*



3-4 weeks *cabin is “ready outside”*



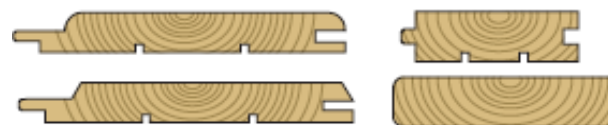
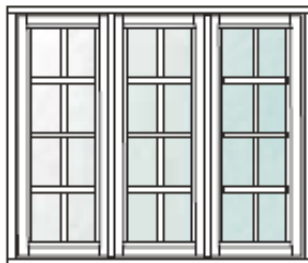
Including also: interior separating stud walls are ready in place



Electrician and plumber can start working



„READY OUTSIDE“ DELIVERY PACKAGE



Quality control and best suppliers

Vi leverer i henhold til Energikrav TEK 10- 2017

Byggeteknisk forskrift (TEK 10, 15.07.2016) - obligatorisk i 2017

KAPITTEL 14 ENERGI

§ 14-2. Krav til energieffektivitet

§ 14-3. Minimumskrav til energieffektivitet

§ 14-5. Unntak og krav til særskilte tiltak

For boligbygning og fritidsbolig der kun en del av bygningen har yttervegger i laft, gjelder bestemmelsen i § 14-5 fjerde ledd for laftedelen. lekkasjetallet for hele bygningen følger kravet som gjelder for bygg med laftede yttervegger. (våre STAVLAF bygninger)

Minimumskrav til energieffektivitet – Fritidsbolig					
U-verdier, nye energikrav (TEK 10–2017) i henhold til TEK (Teknisk forskrifter)					
Energiltak	< 70 m ²	70 - 150 m ²	≥ 150 m ² (Småhus, samt Fritidsbolig over 150m ²)	Laftet yttervegg minstekrav < 150 m ²	Laftet yttervegg minstekrav ≥ 150 m ² (Boligbygning og Fritidsbolig)
Tak	Ingen krav	0,18 W/m ² K	0,13 W/m ² K	0,13 W/m ² K	0,13 W/m ² K
Vegger		0,22 W/m ² K	0,18 W/m ² K	0,60 W/m ² K (min 8° laft)	0,60 W/m ² K (min 8° laft)
Gulv på grunn og mot det fri		0,18 W/m ² K	0,10 W/m ² K	0,15 W/m ² K	0,10 W/m ² K
Kuldebroverdi normalisert		-	≤ 0,05	-	-
Lufttethet (luftvekslinger pr.time)		≤ 1,5	≤ 0,6	≤ 4,5	≤ 4,0
Vinduer/dorere/glass		1,2 W/m ² K	0,8 W/m ² K	1,2 W/m ² K	0,8 W/m ² K

TEK 10—2017 in praksis

Vi leverer tak, vegger, dører og vinduer i henhold til TEK 10-2017

Mer info: www.glava.no

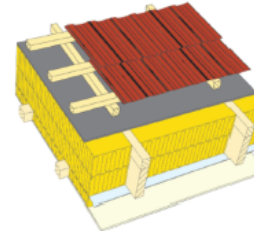


Fig. 1 Skråtak med sperrer

Isolasjonstykkel [mm]	Fig. 1 U-verdi [W/m ² K]	
	36 mm sperre	48 mm sperre
200	A 37	A 37
250	0,21	0,22
275	0,17	0,18
300	0,16	0,16
350	0,15	0,15
400	0,13	0,13
400	0,11	0,12

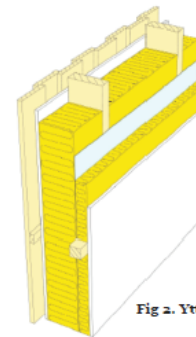


Fig. 2 Yttervegg

Isolasjonstykkel [mm]	Stenderdimensjon [mm]	U-verdi [W/m ² K]	
		A 37	40
150	48 x 98 x 48 x 48	0,28	0,30
170	48 x 123 x 48 x 48	0,25	0,26
200	48 x 148 x 48 x 48	0,22	0,23
225	48 x 173 x 48 x 48	0,20	0,21
250	48 x 198 x 48 x 48	0,18	0,19
300	48 x 198 x 48 x 98	0,15	0,16

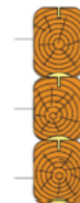


Fig. 3. Laftet yttervegg

0,80 W/m²K
 Dette oppnås ved bruk av 200 mm (8°) tykke laftevegger
 Mer info: www.treteknisk.no



We are delivering according to Nordic energy efficiency rules



Ettevõtte eesmärk on teenida
omanikele tulu!

(kapitali kasvatamine)

Health Impact Assessment (HIA)

The determinants of health

Introduction

Many factors combine together to affect the health of individuals and communities. Whether people are healthy or not, is determined by their circumstances and environment. To a large extent, factors such as where we live, the state of our environment, genetics, our income and education level, and our relationships with friends and family all have considerable impacts on health, whereas the more commonly considered factors such as access and use of health care services often have less of an impact.

The determinants of health include:

- the social and economic environment,
- the physical environment, and
- the person's individual characteristics and behaviours.

Ettevõtte eesmärk - omanikule tulu teenida

Ainult terve ettevõtte suudab tulu teenida

- Genetics - inheritance plays a part in determining lifespan, healthiness and the likelihood of developing certain illnesses. Personal behaviour and coping skills – balanced eating, keeping active, smoking, drinking, and how we deal with life's stresses and challenges all affect health.

Toode ise. Tootarendus, uued tooted (sessoonus)

- Income and social status - higher income and social status are linked to better health. The greater the gap between the richest and poorest people, the greater the differences in health.

Rahatrüki mõju. NOK, SEK kursid
Eraisikute laenupiir
Dokumentaalmaksud - riskimaandus

- Social support networks – greater support from families, friends and communities is linked to better health. Culture - customs and traditions, and the beliefs of the family and community all affect health.

Professionaalsed partnerid. Klientide soovitusel, Google/Fb jms müügivõrgustik/otse lõppkliendile

- Physical environment – safe water and clean air, healthy workplaces, safe houses, communities and roads all contribute to good health. Employment and working conditions – people in employment are healthier, particularly those who have more control over their working conditions

Sisendhindade tõus: tööjõukulud, puit, jms
Sihturu bürokraata (ID, maksud)

Omahind/sihturu kohalik hind

- Education – low education levels are linked with poor health, more stress and lower self-confidence.

Tehnilised nõuded (sh kohalikud nõuded. ETA, CE)

Mida rohkem tead... seda rohkem tuleb kulutada suur või väike firma - nõuded samad (sh insener jms)

- Health services - access and use of services that prevent and treat disease influences health

Maksusüsteem, tugiteenused, bürokraatia koormab /toetab

- Gender - Men and women suffer from different types of diseases at different ages.

ettevõtte / toote elutsükel

majanduse tsükel???





Vähenenud ostujõud





Paranenud ostujõud



Tulevikumaja:

On toode (automatiseeritav tootmine)

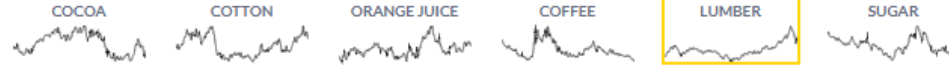
Ei pea ehitama kohapeal (plug/play)

Saab müüa Amazonis

(globaalne turg)

Kuidas eristuda?

Static
Interactive



Lumber

AUG 22 2018 04:59 PM

O:486.10 H:486.80 L:452.90 C:452.90

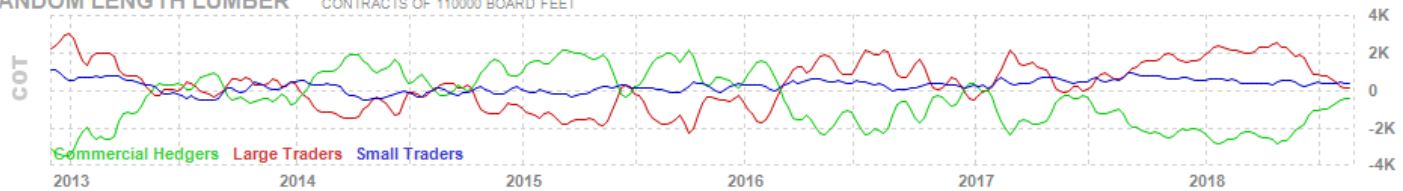
-15.00 (3.21%)

[@finviz.com](#)



RANDOM LENGTH LUMBER

CONTRACTS OF 110000 BOARD FEET



[affiliate](#) • [advertise](#) • [contact](#) • [privacy](#) • [help](#)
 Futures quotes delayed 20 minutes.
 Copyright © 2007-2018 FINVIZ.com. All Rights Reserved.



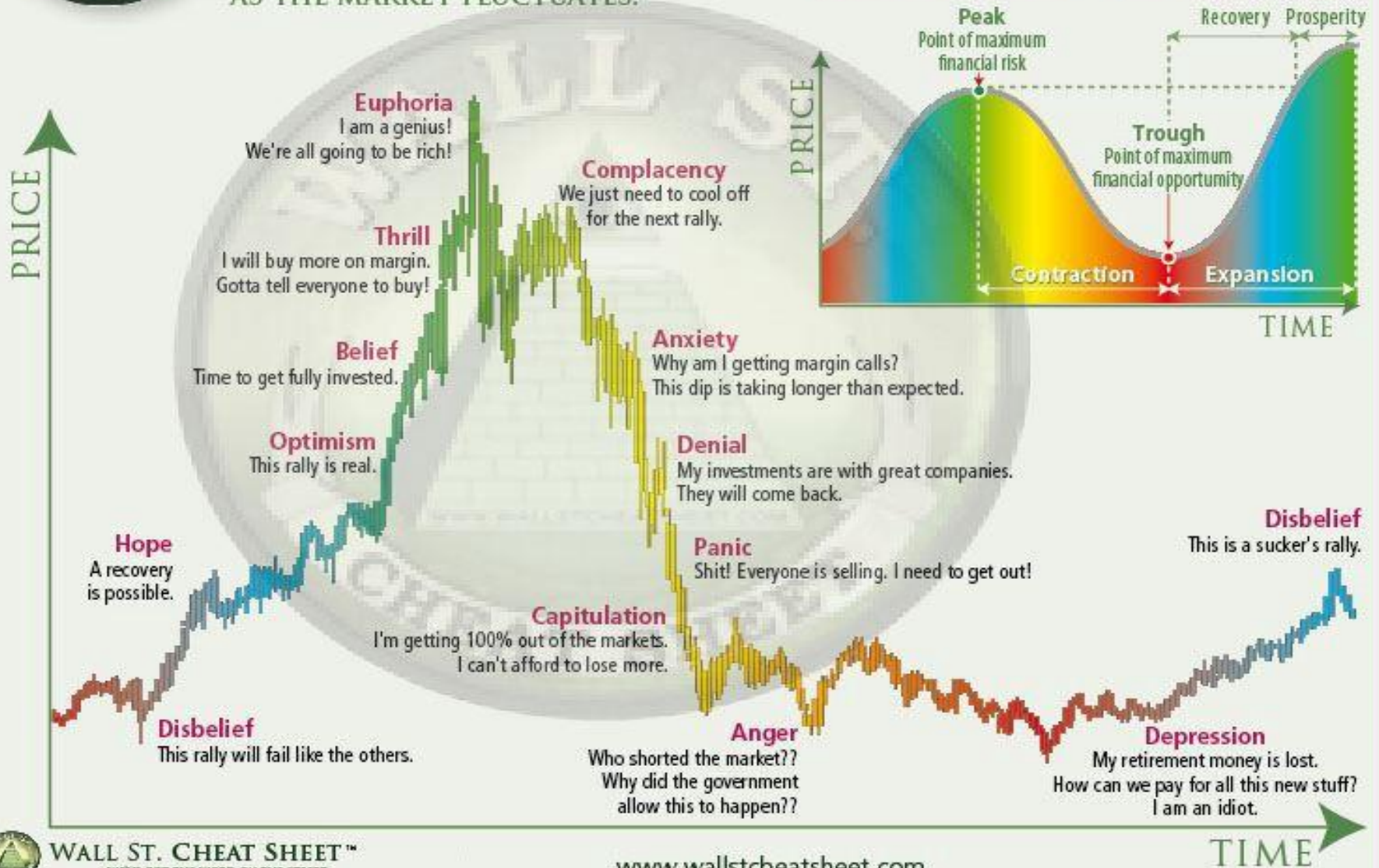


WALL ST. CHEAT SHEET™ WE'VE GOT THE WORD ON THE STREET

PSYCHOLOGY OF A MARKET CYCLE

THE FEELINGS APPEARING AS THE MARKET FLUCTUATES.

SIMPLIFIED MARKET CYCLE






Kui palju on veel aega languseni?

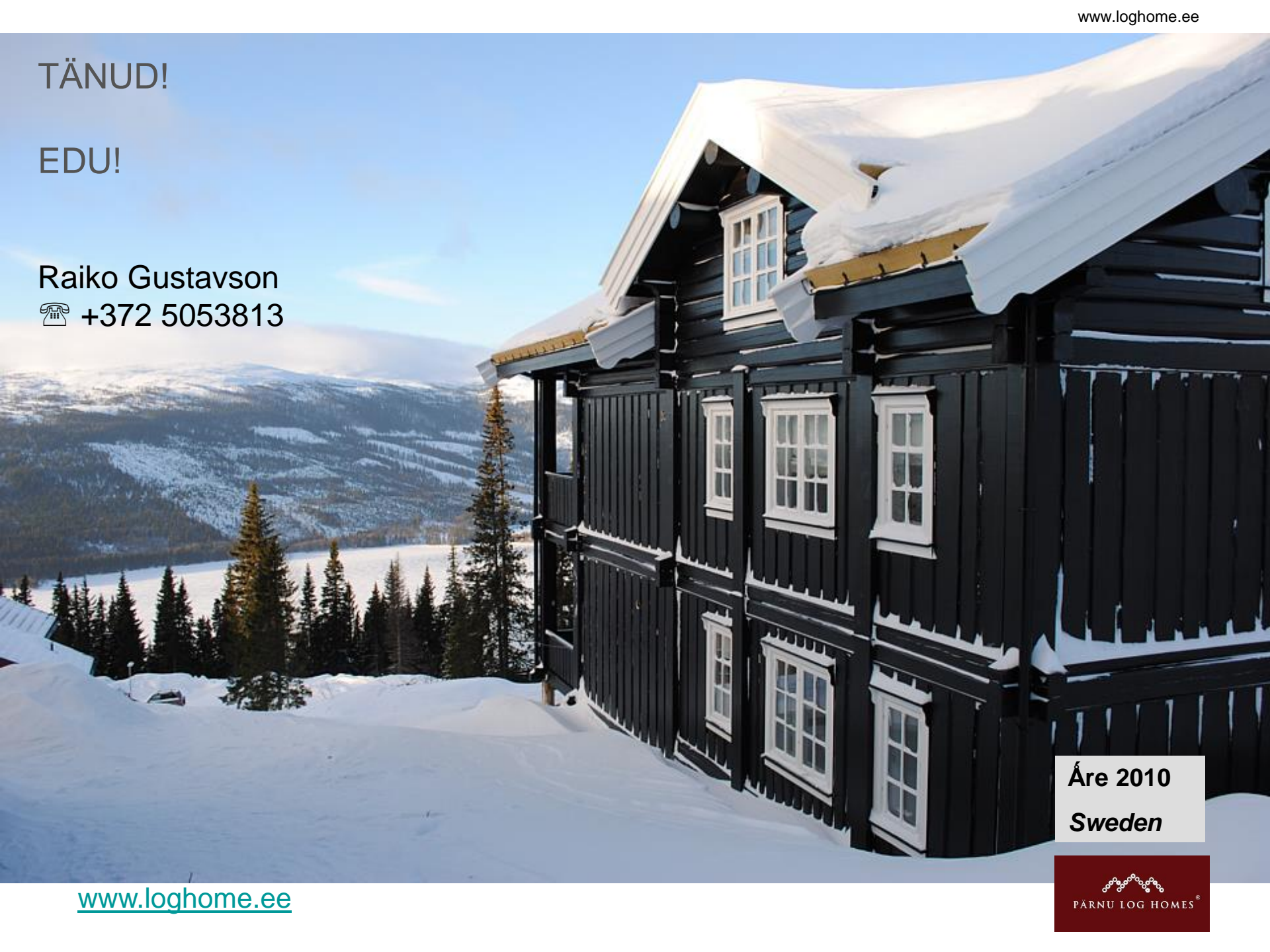


TÄNUD!

EDU!

Raiko Gustavson

 +372 5053813



Áre 2010
Sweden