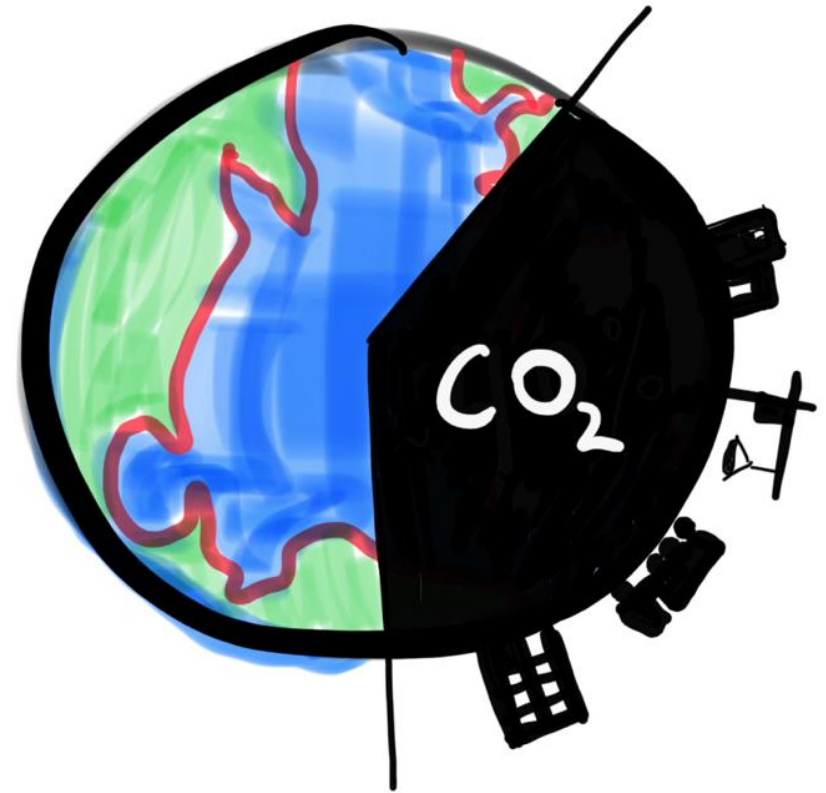
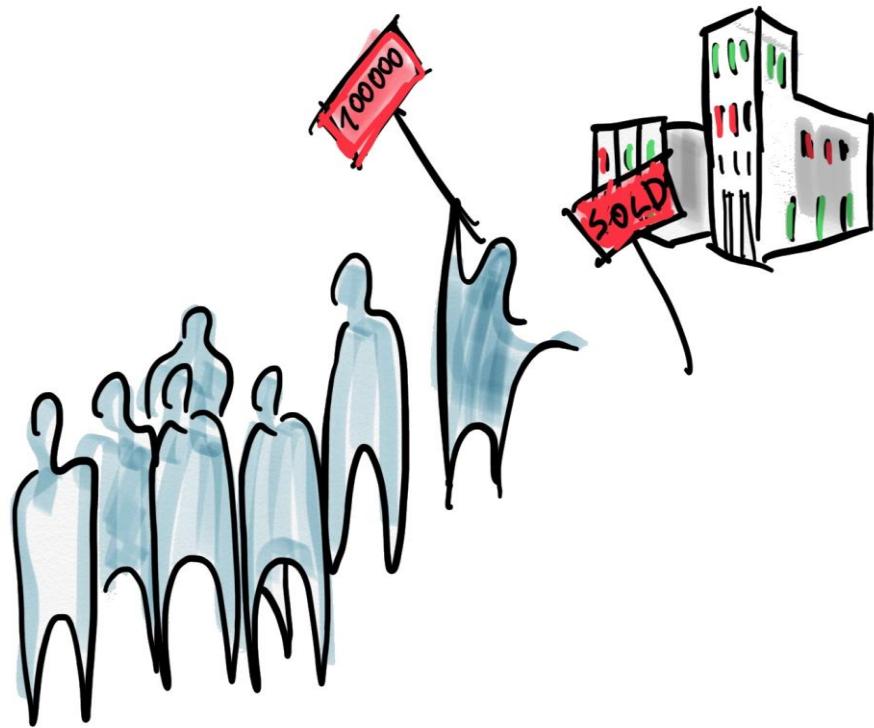
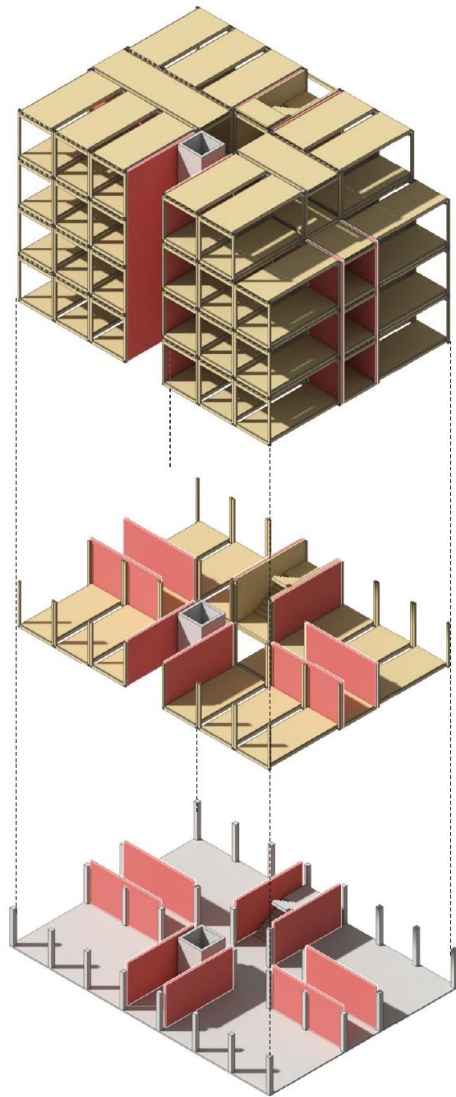


Tööstuslik -ehitus

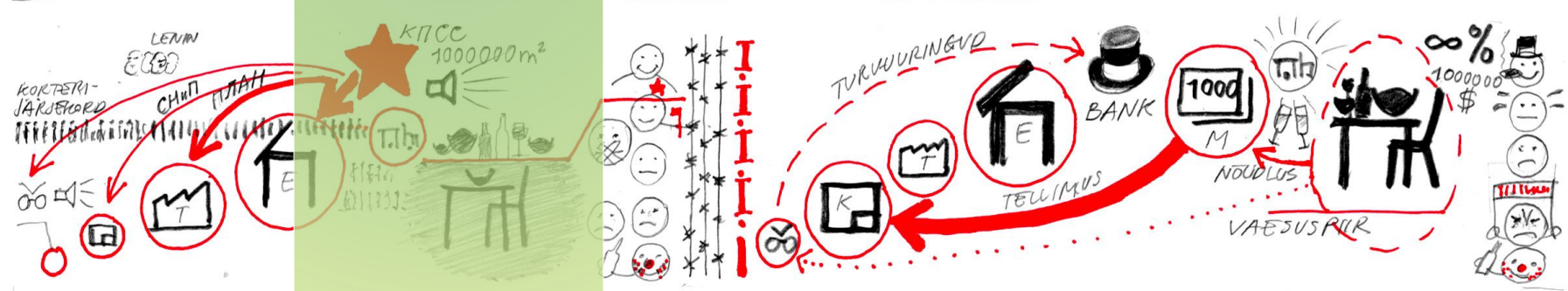
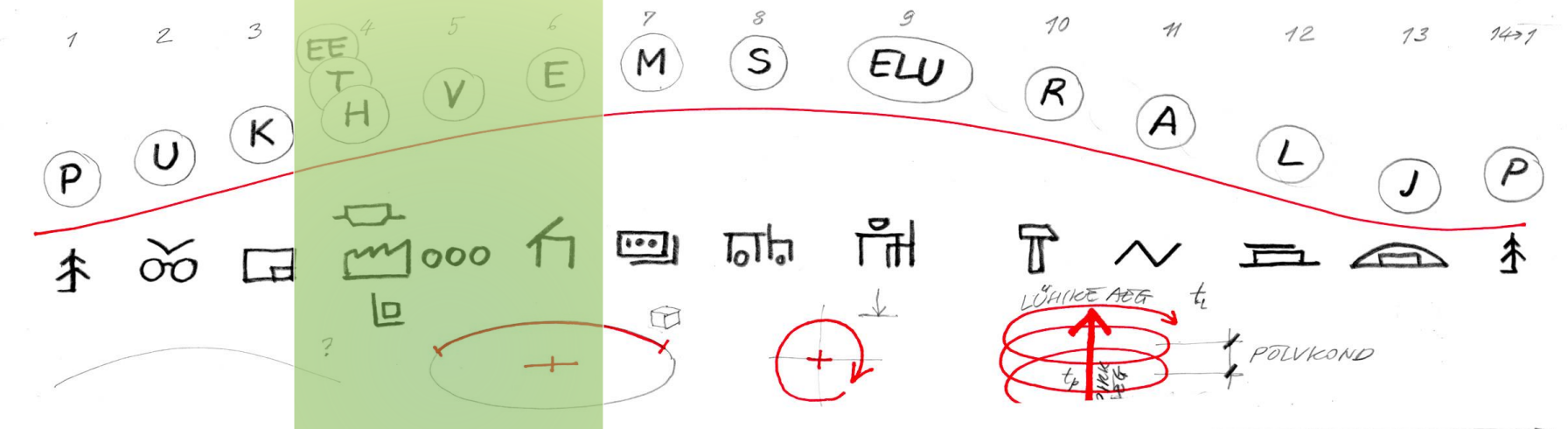
Renee Puusepp

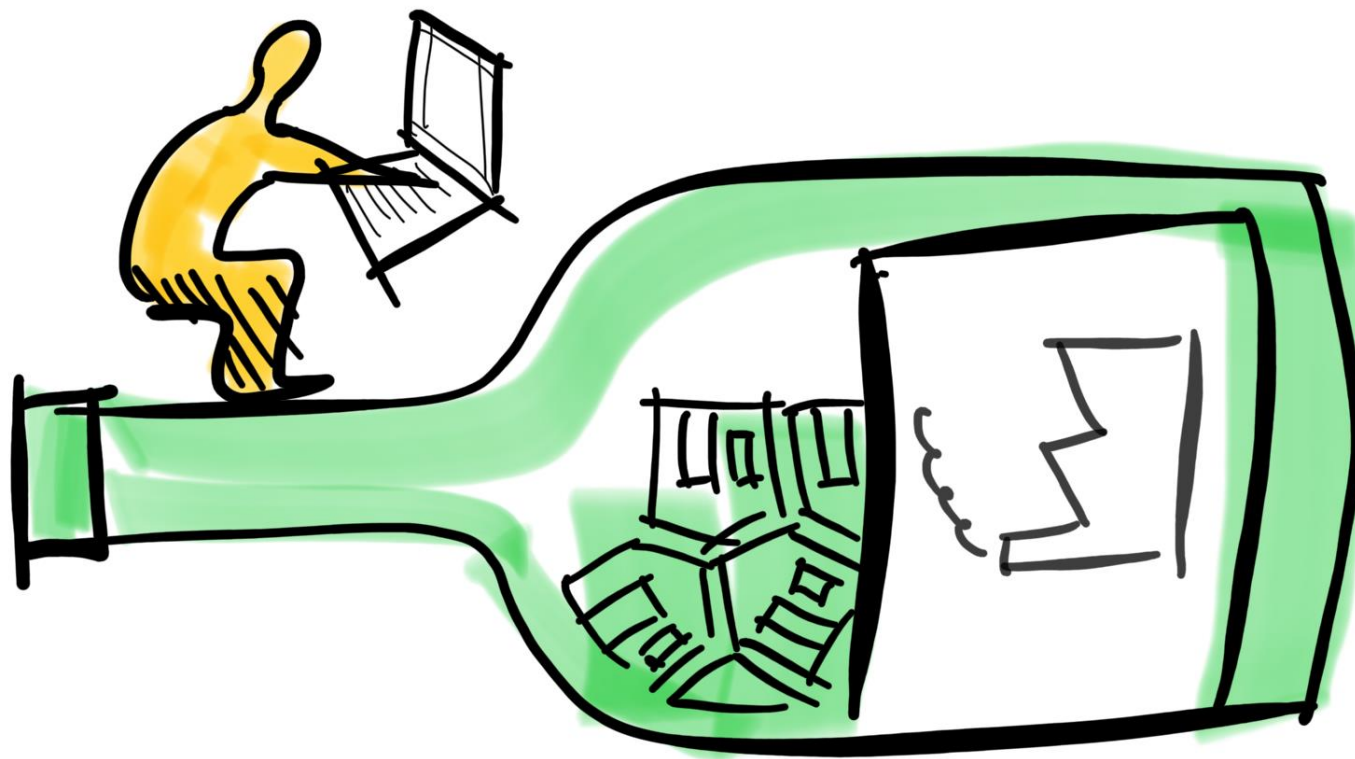


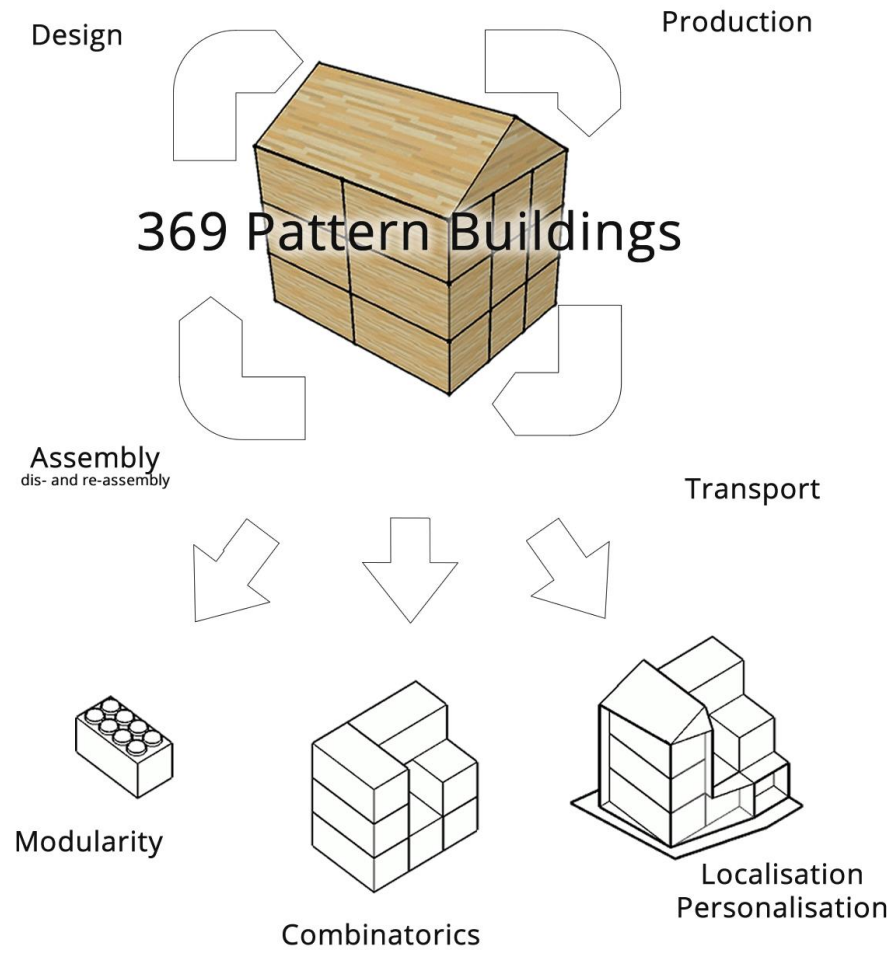




ELUKAAR







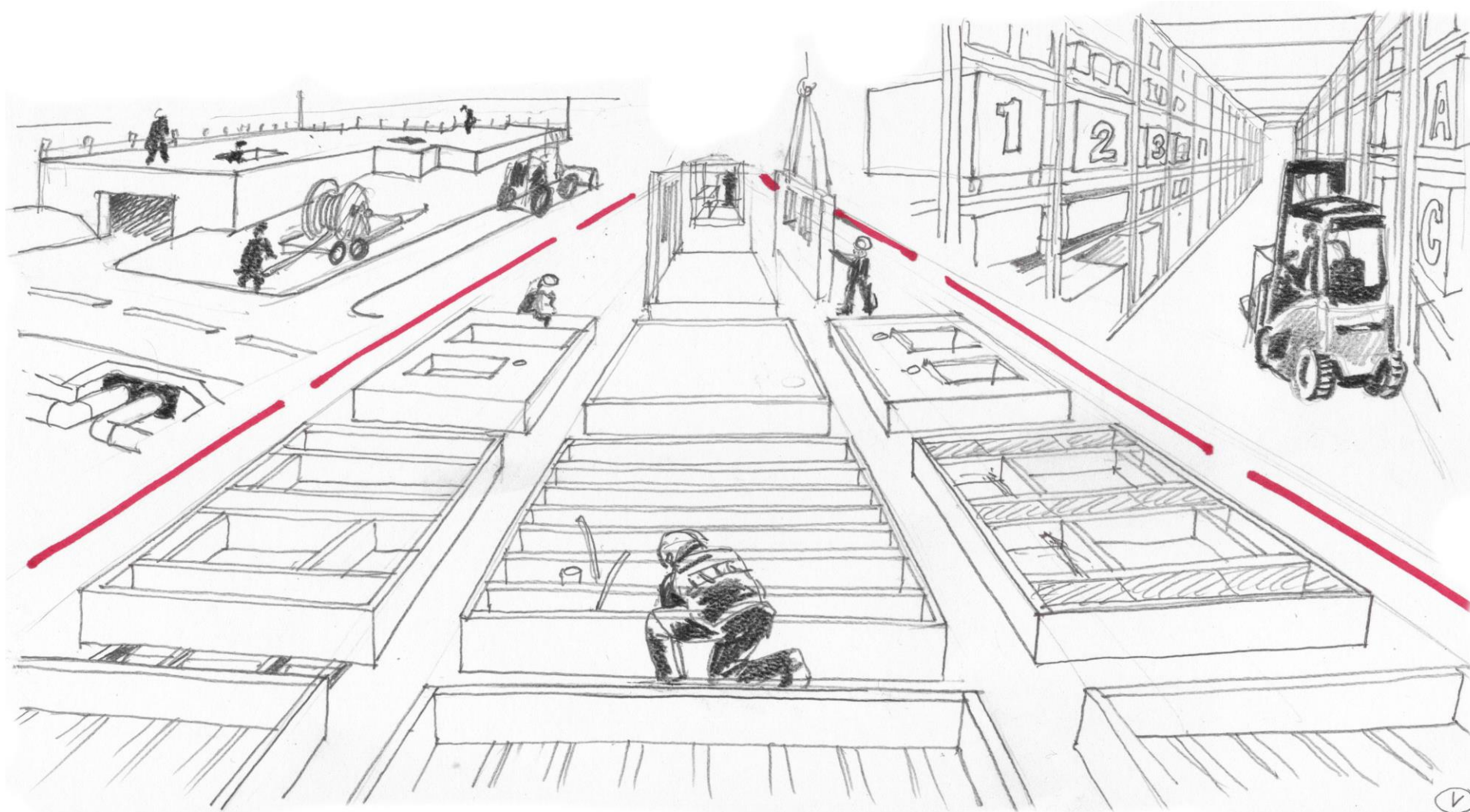
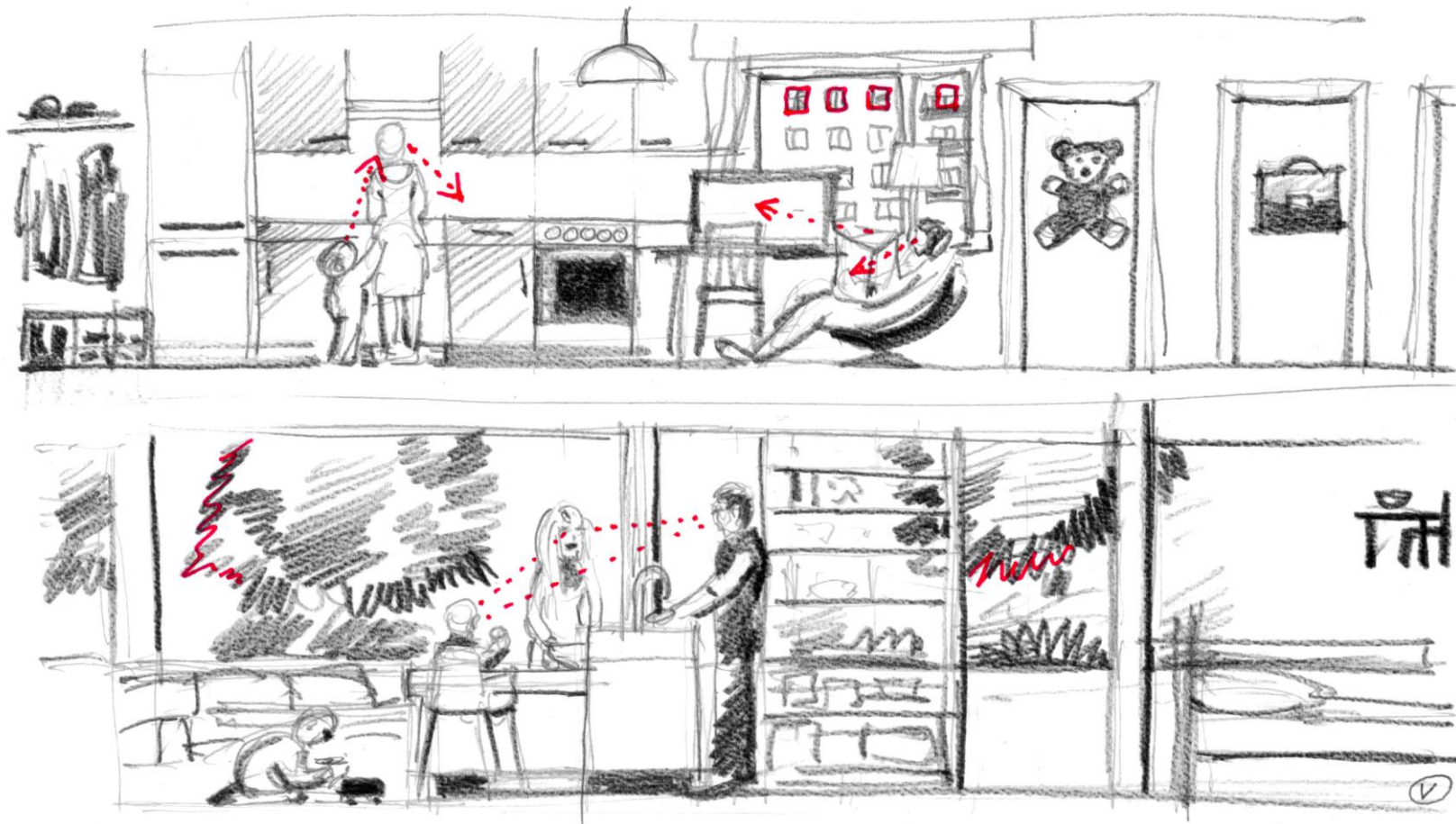


Image: Vello Laanemaa



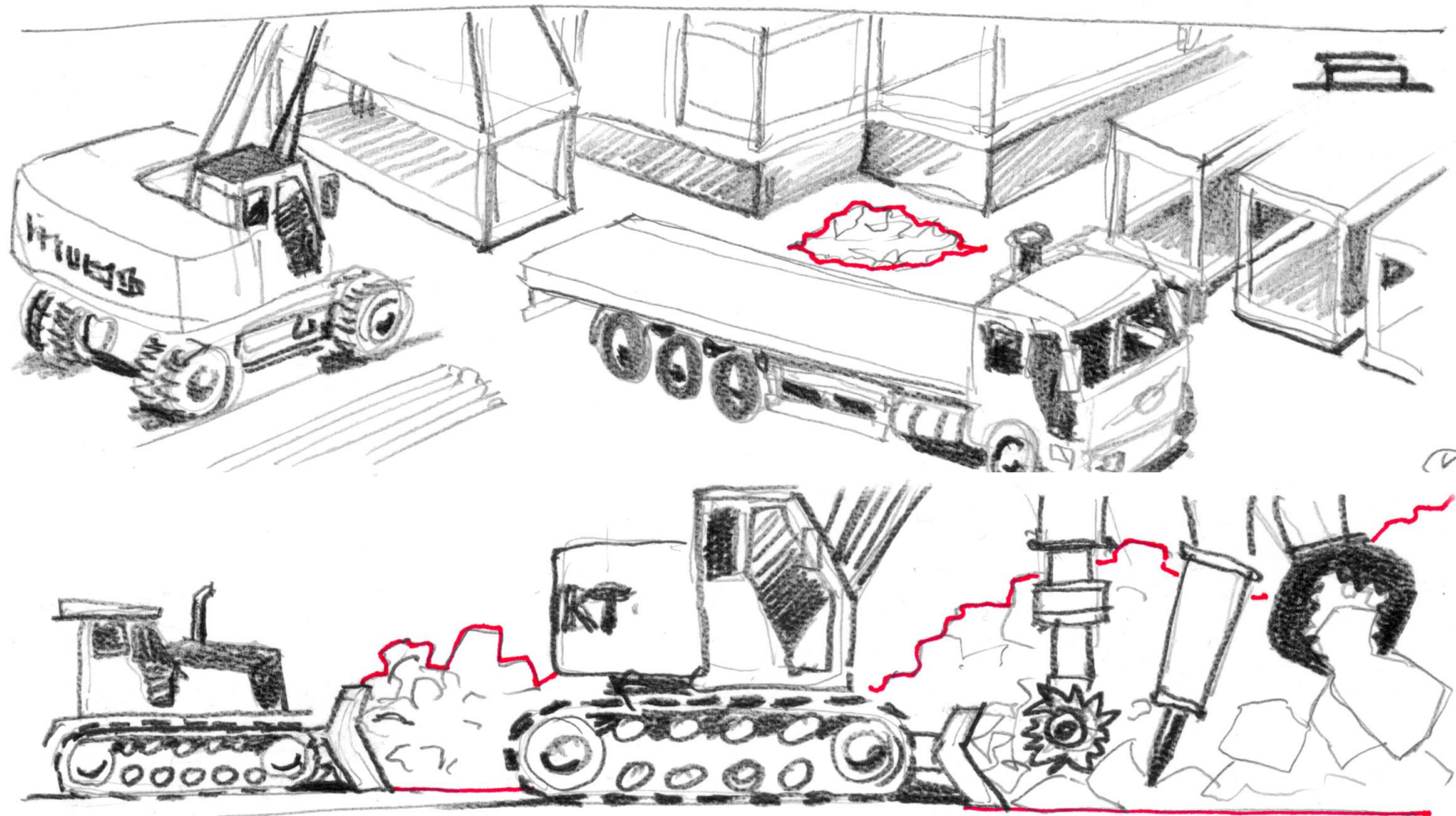
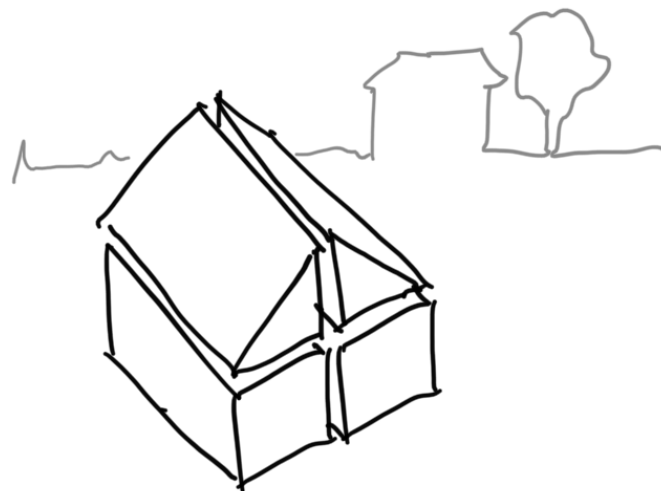
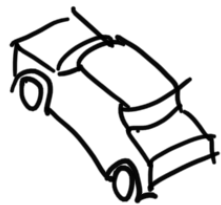
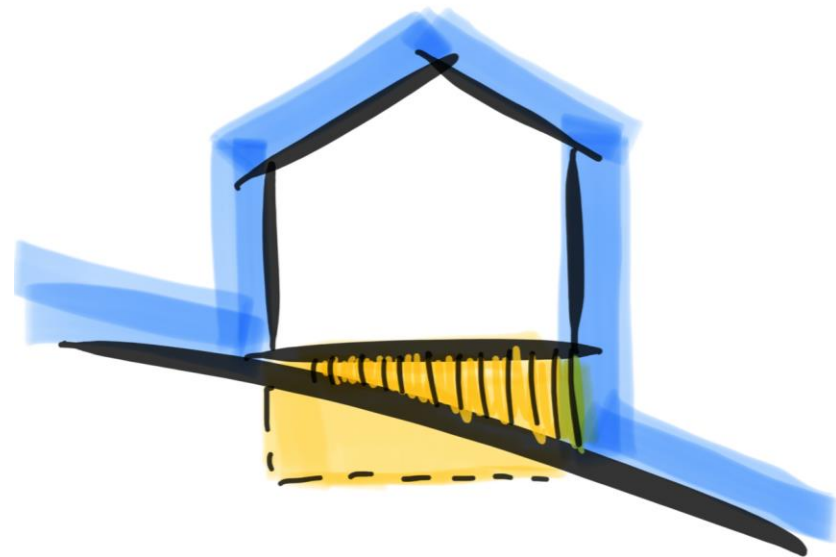
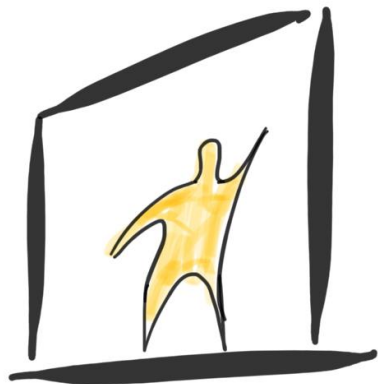
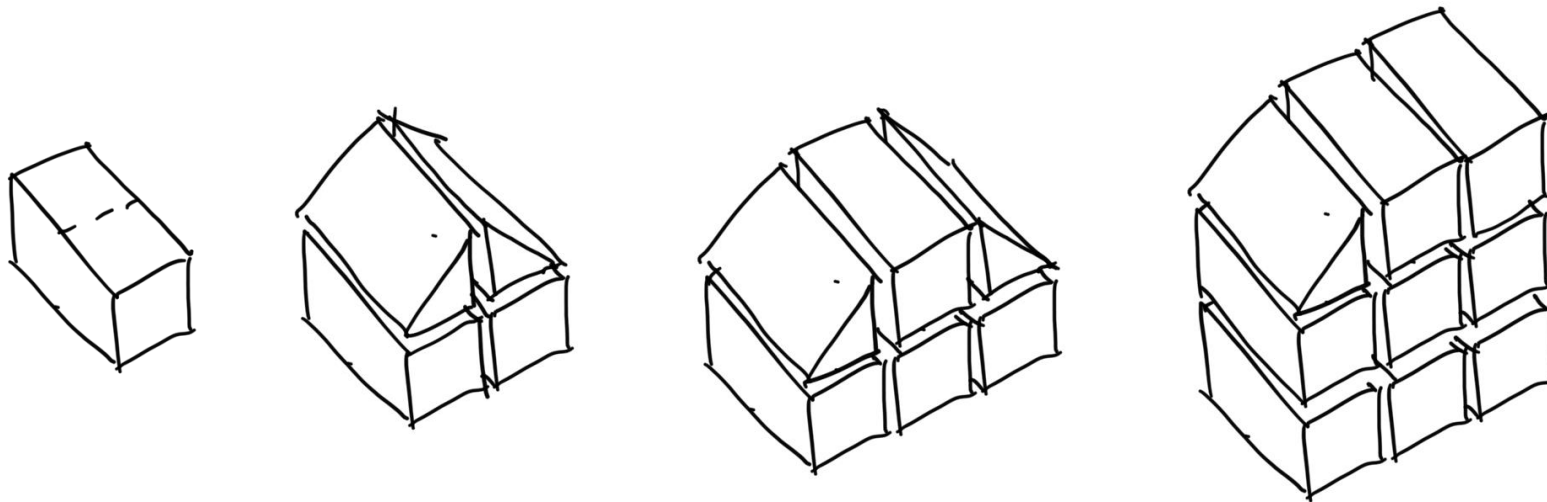
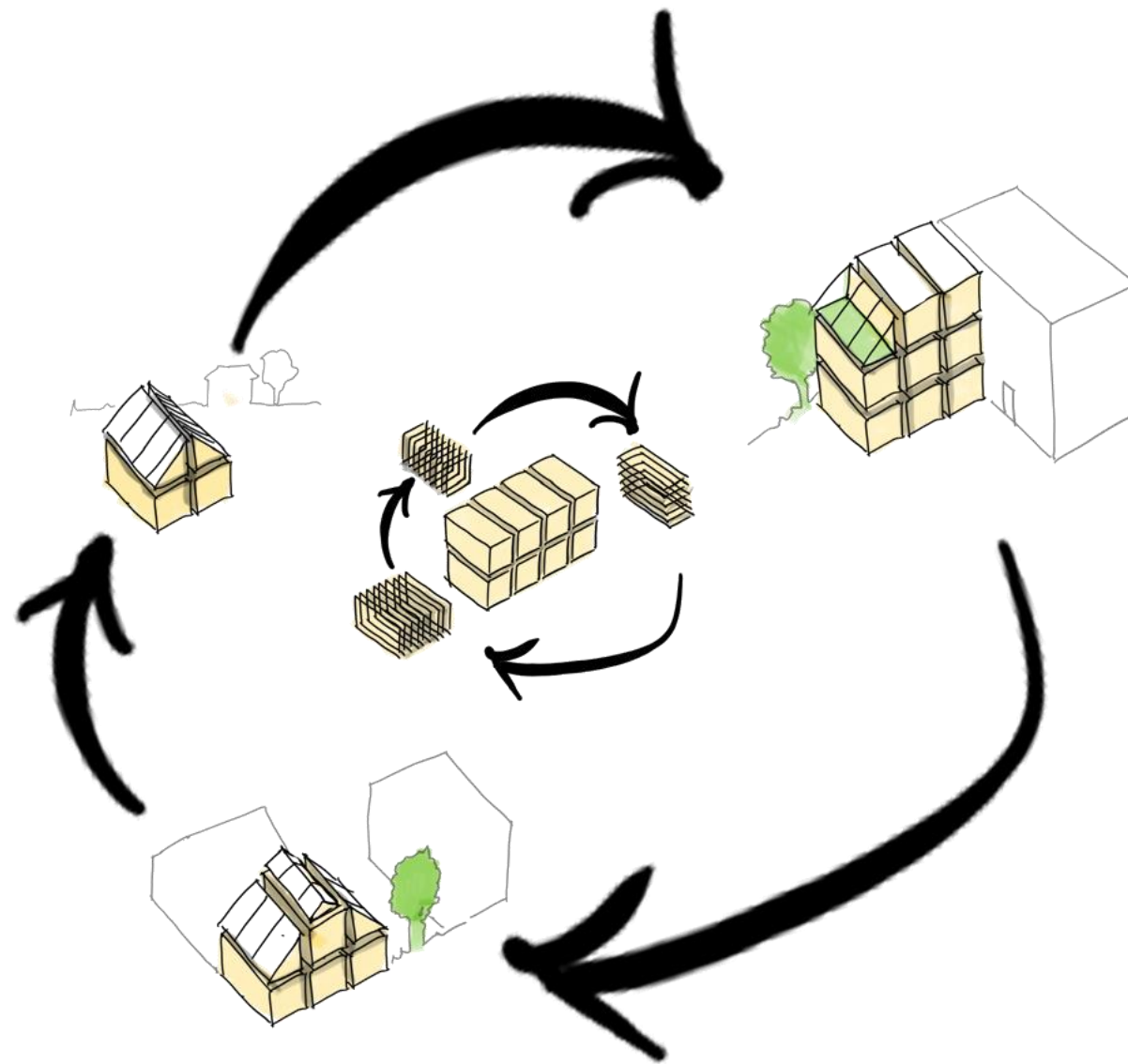


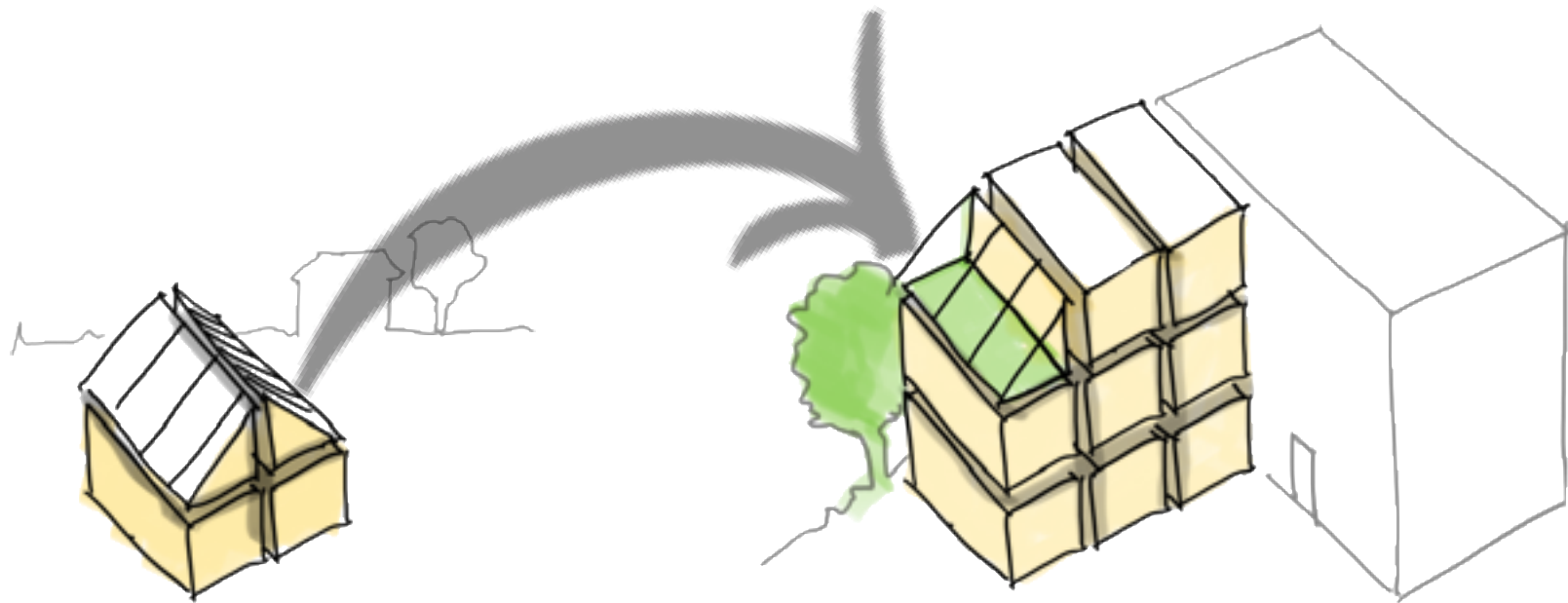
Image: Vello Laanemaa



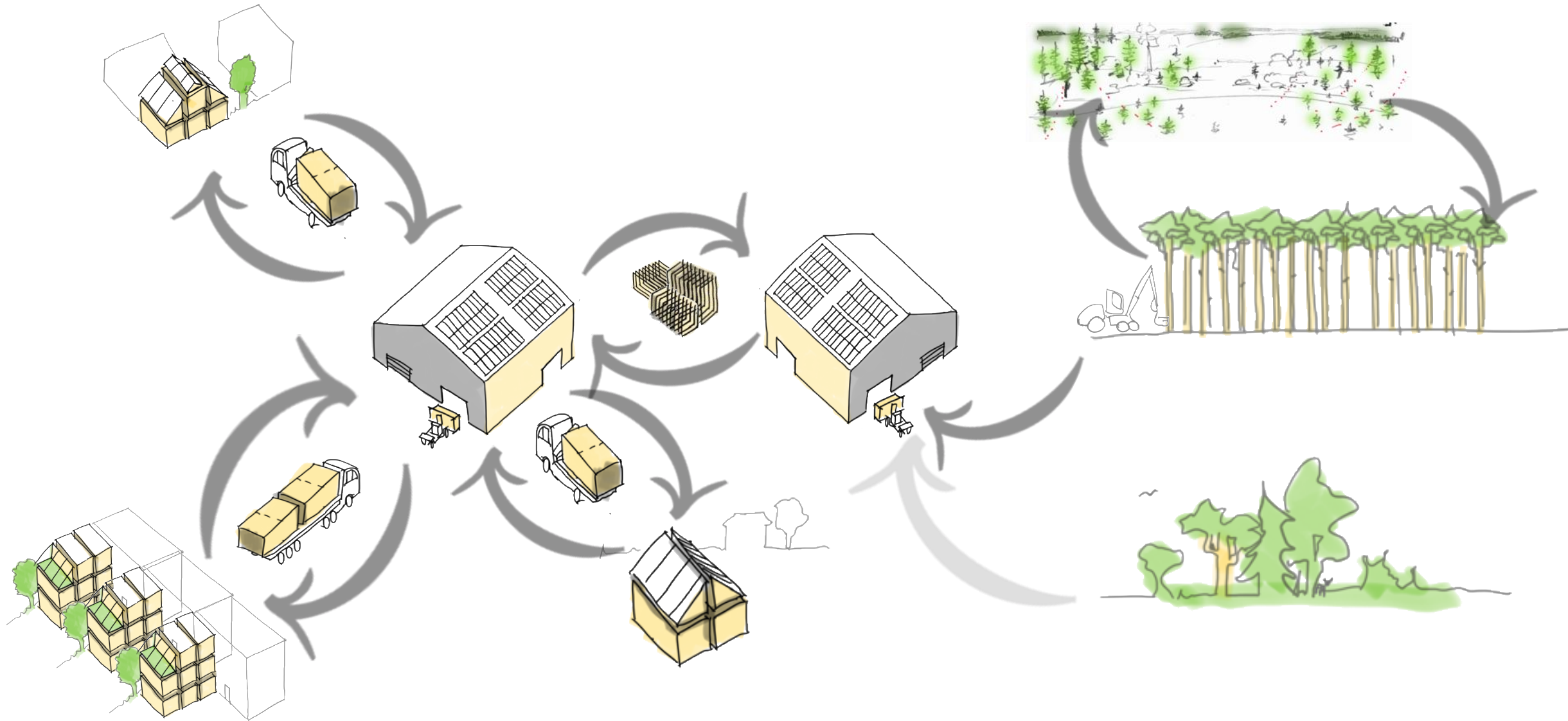


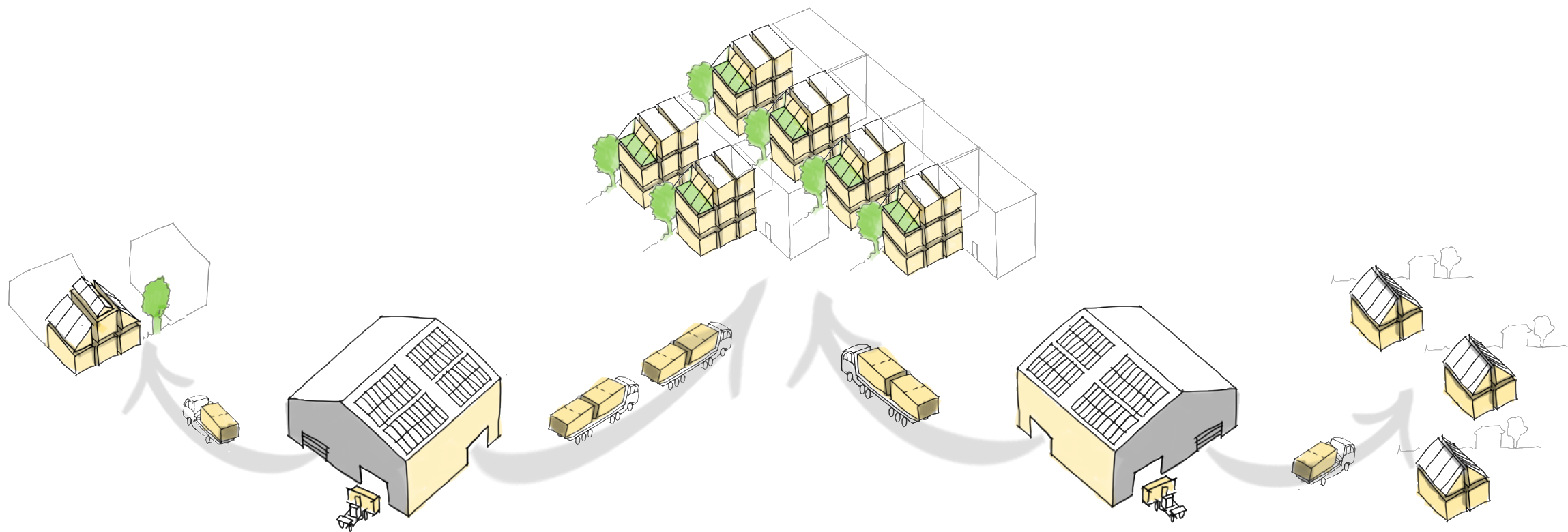


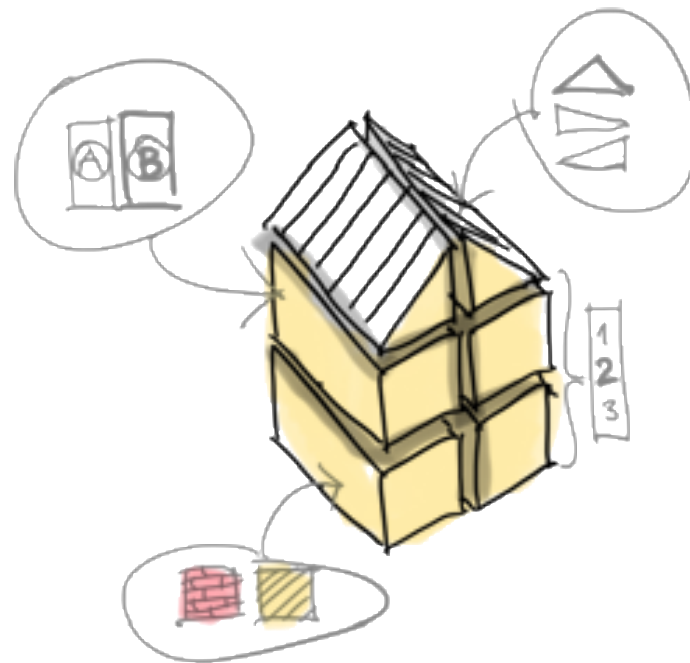


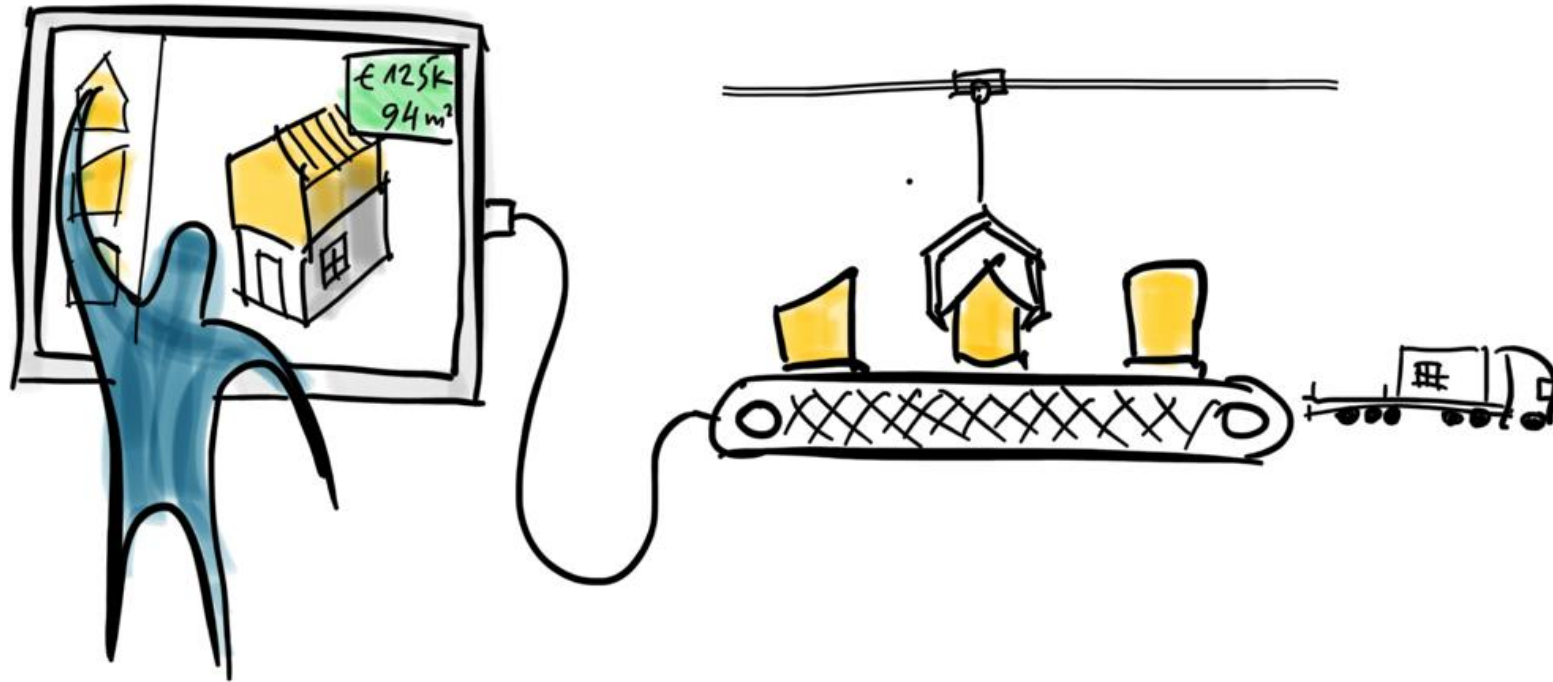


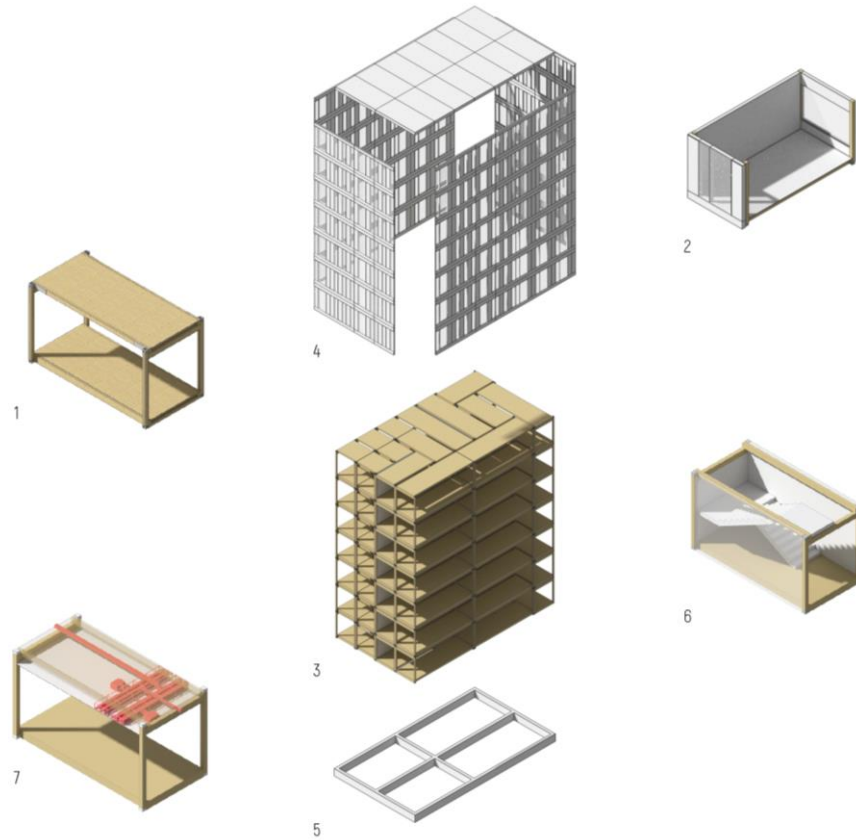


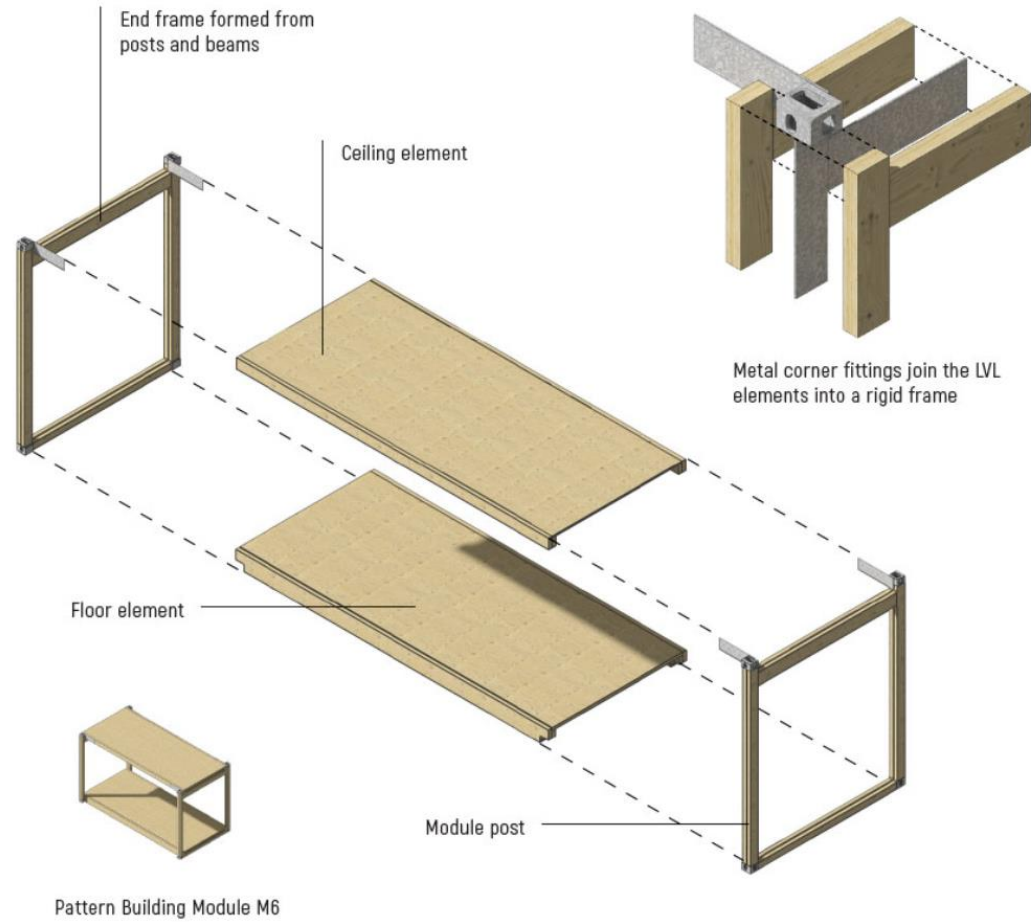


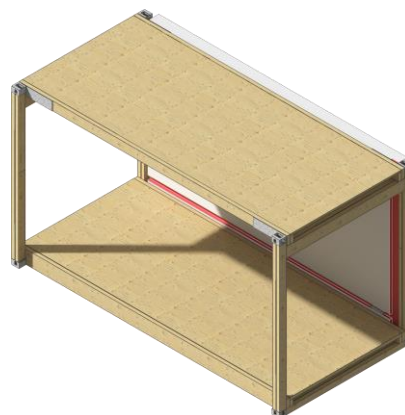
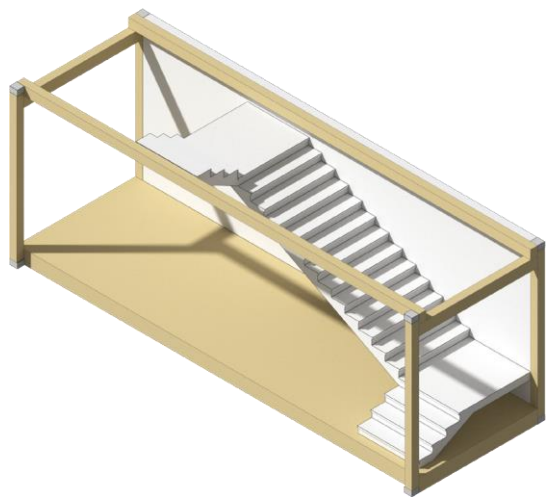
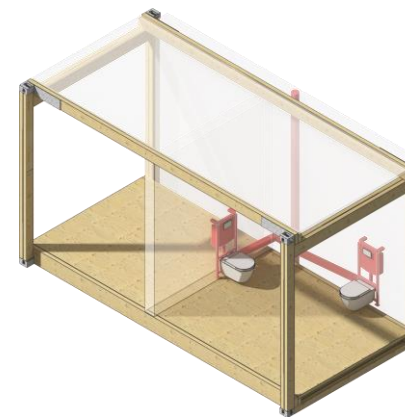
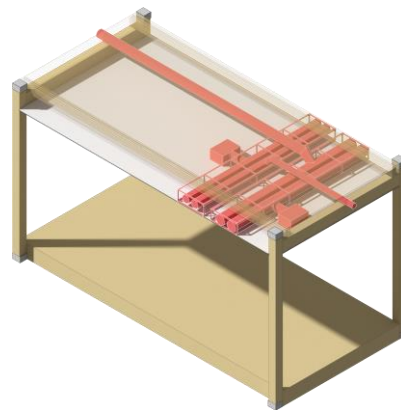
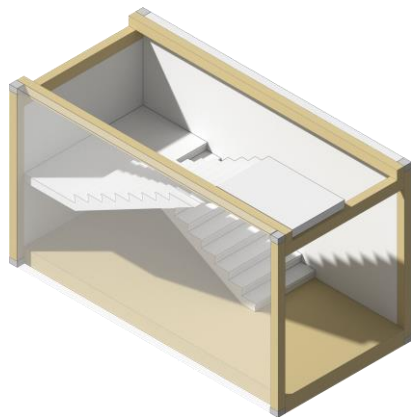


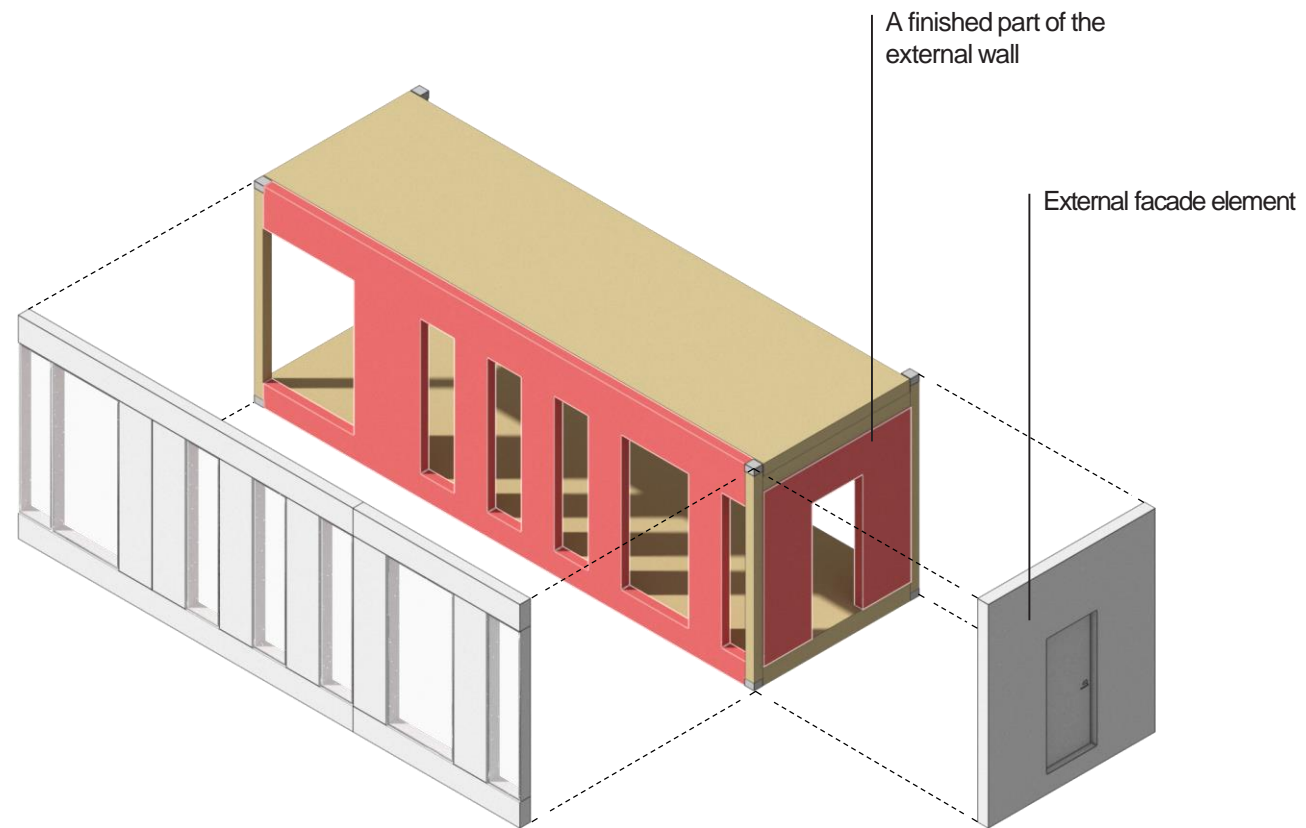








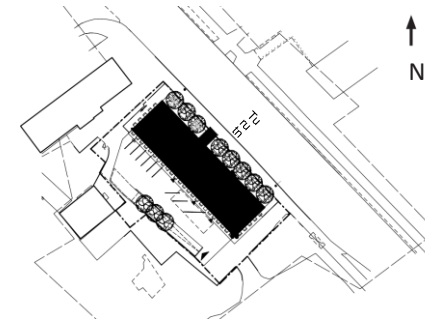
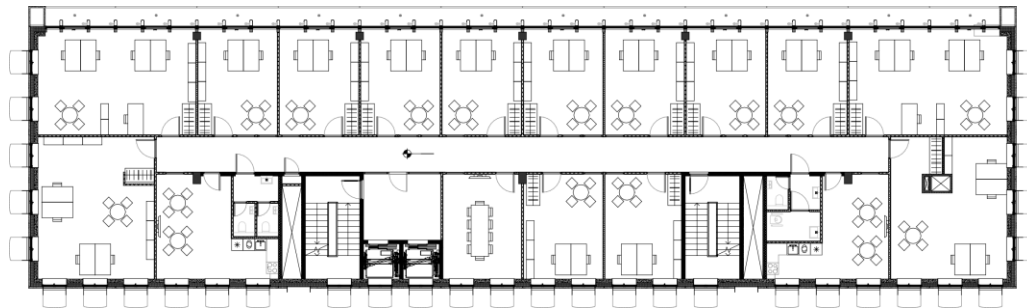
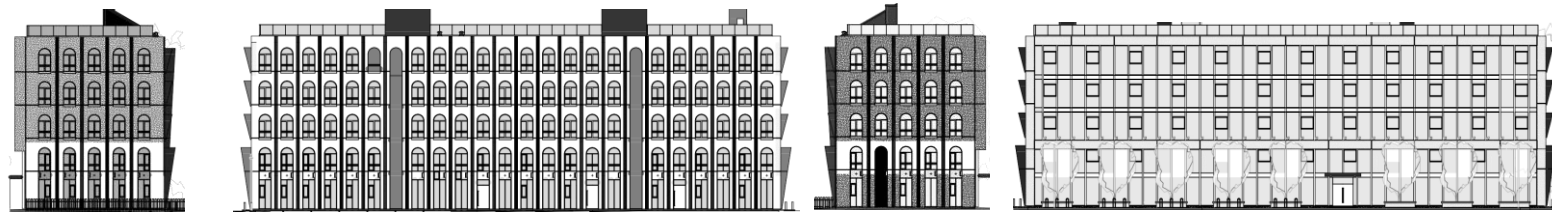


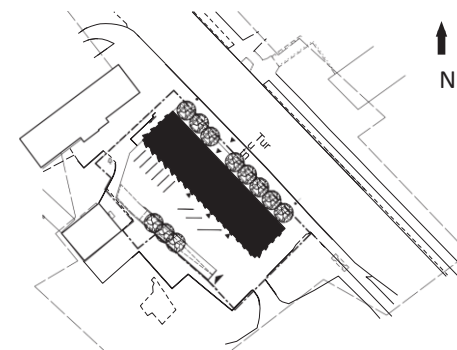
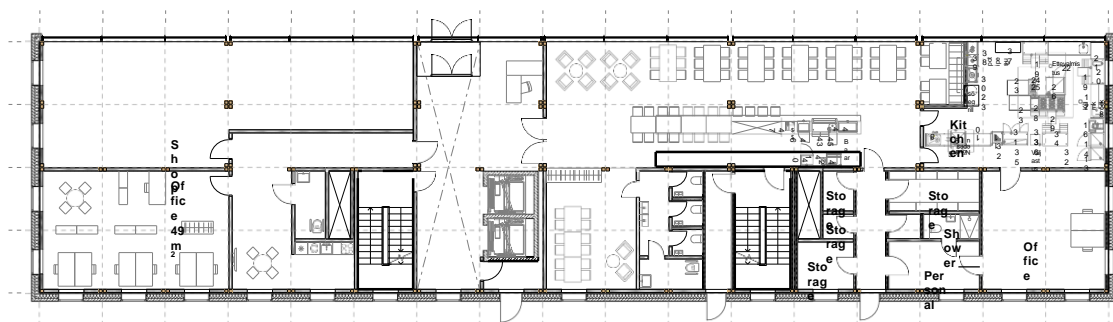






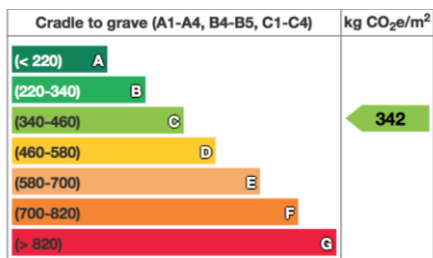
Kontorimaja
Turu 21, Tartu





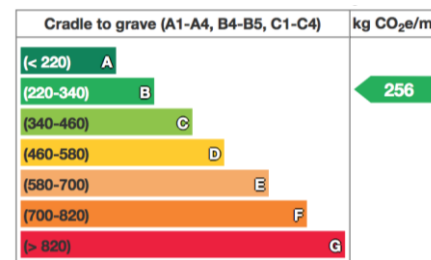
Originaal (raudbetoon)

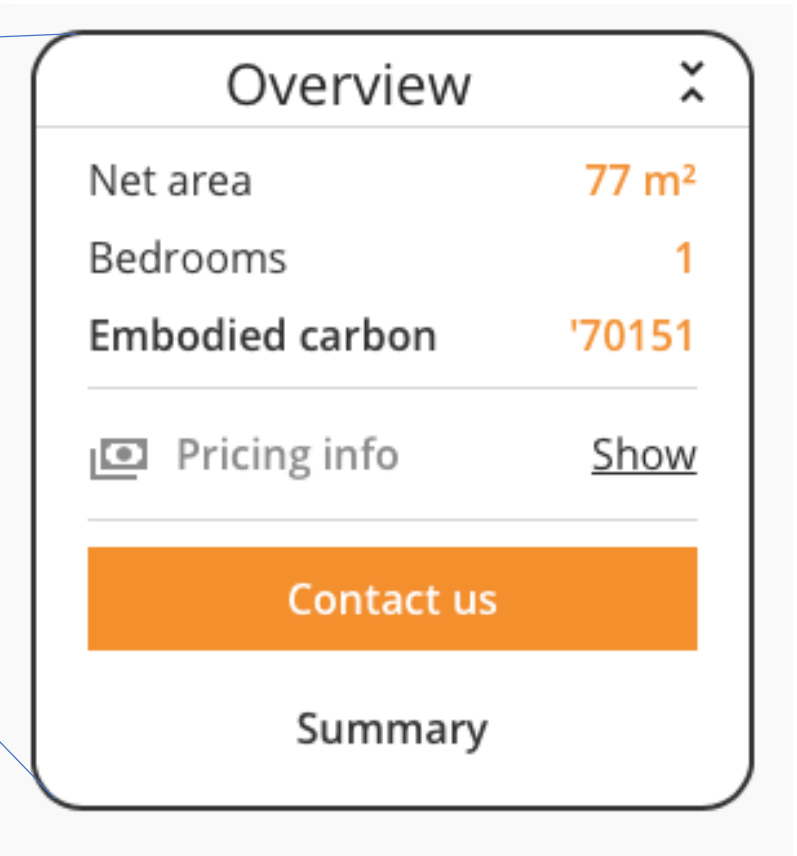
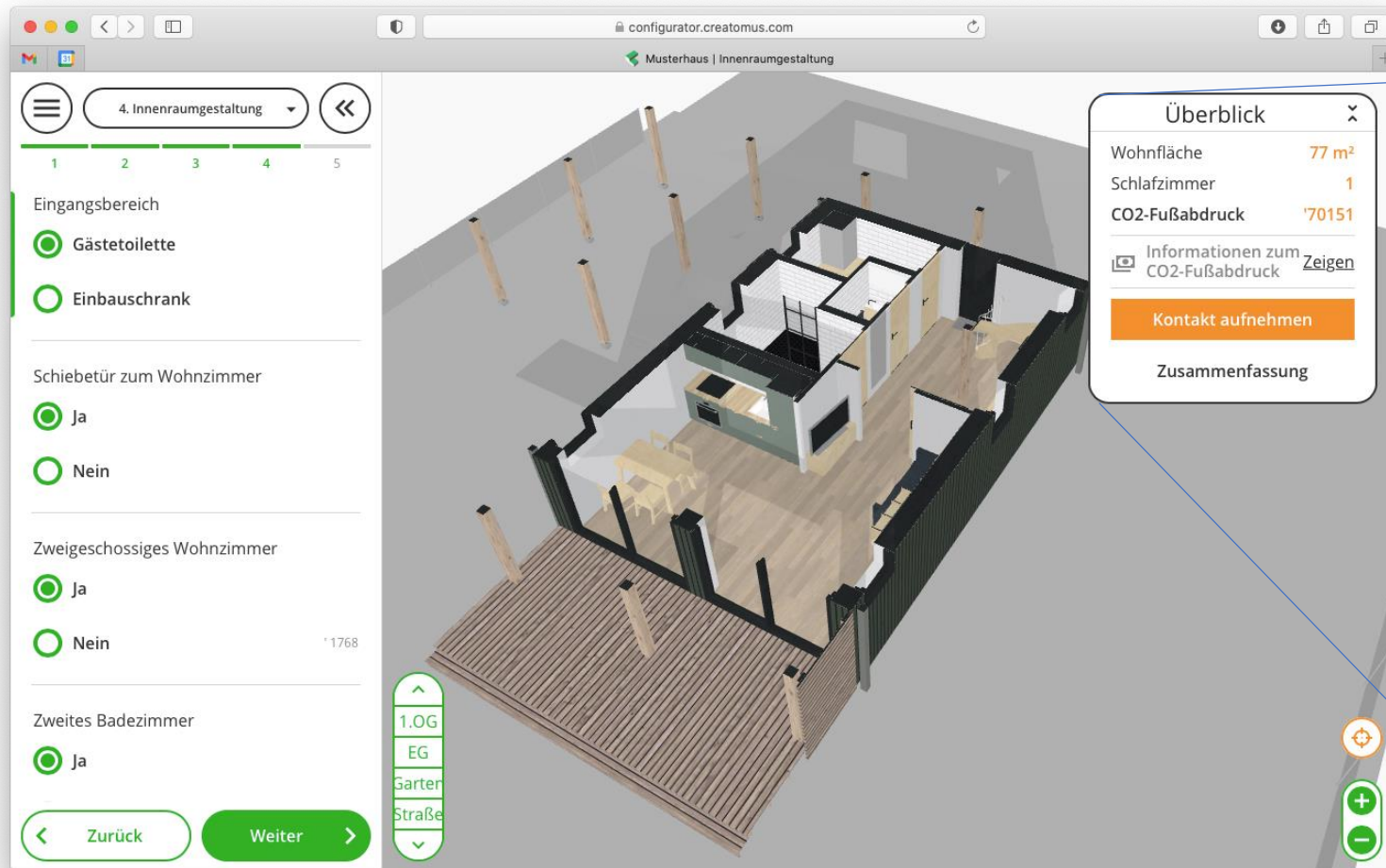
- Kehandi mass: **4M t**
- Biogeenne süsiniku sisaldus:
43 t CO₂e

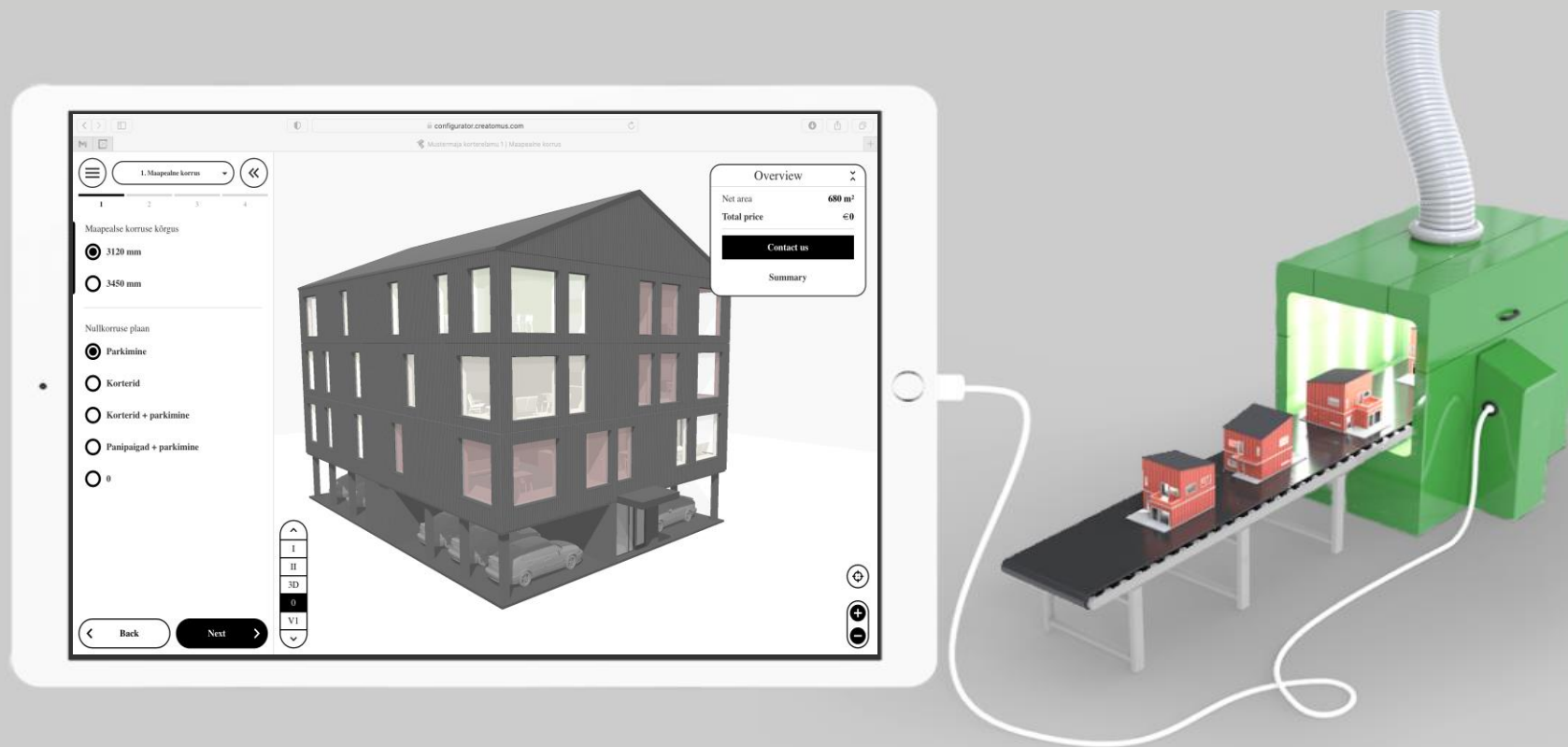


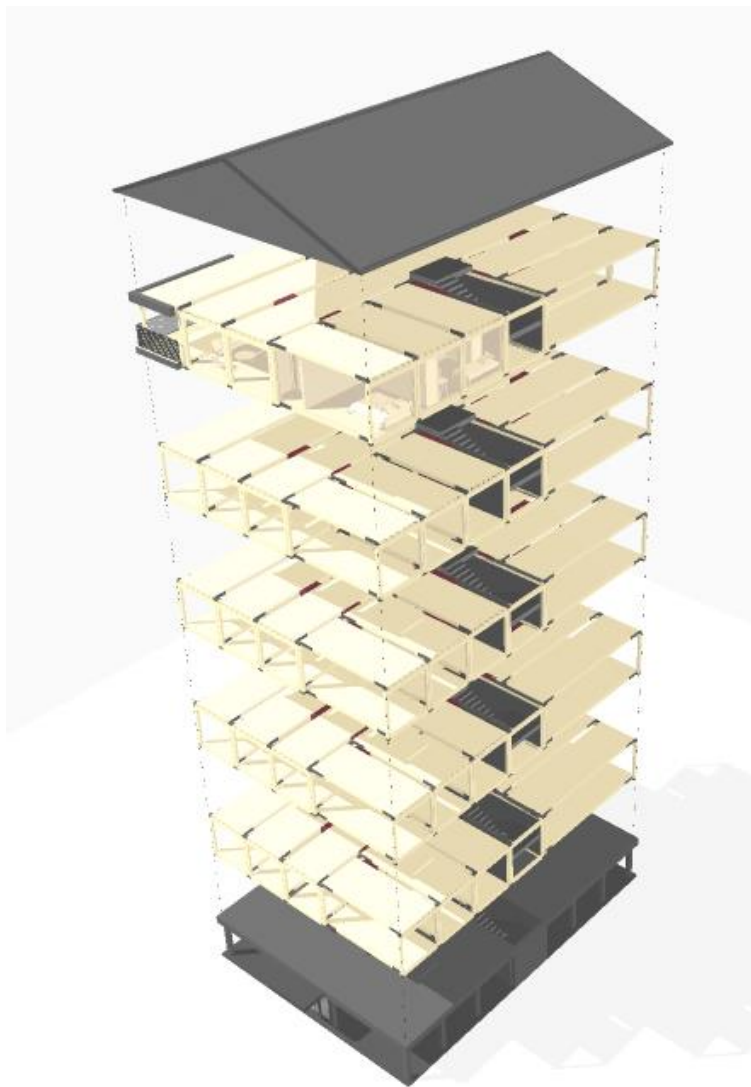
Mustermaja (LVL)

- Kehandi mass: **0.75M t**
- Biogeenne süsiniku sisaldus:
826 tons CO₂e









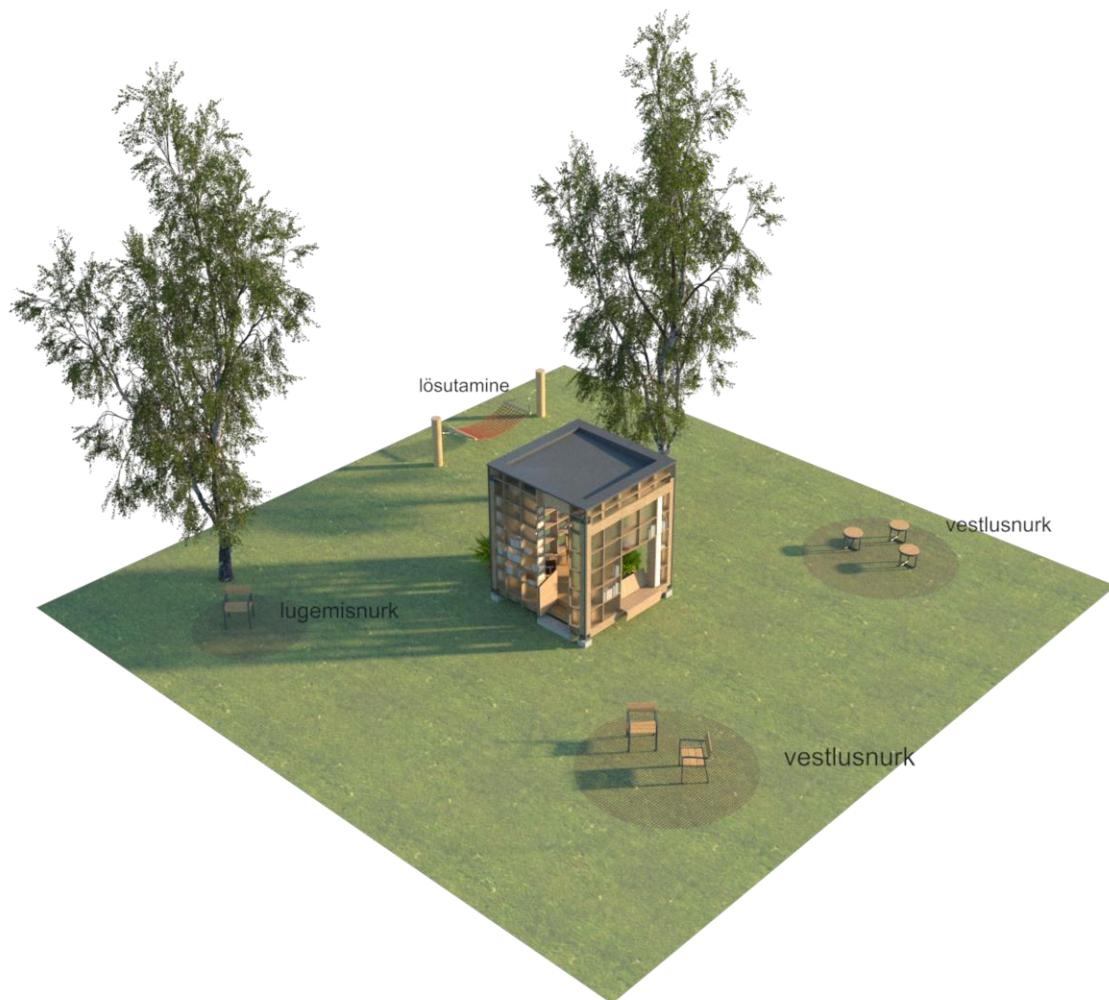


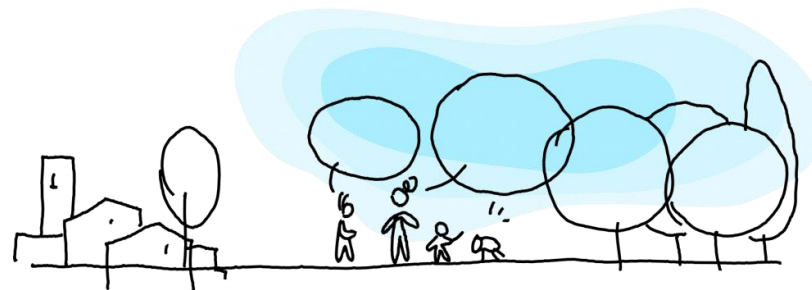
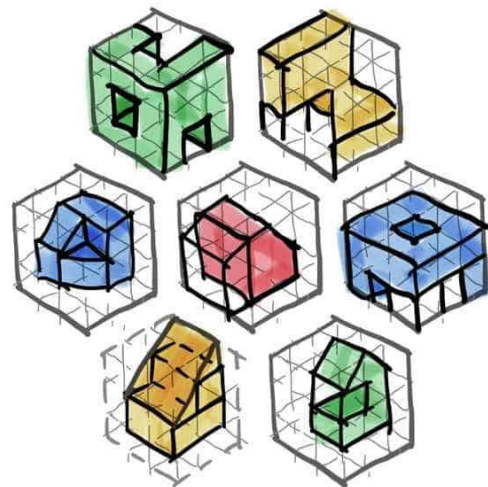
Turu 21

300



Arhitektid: Lauri Läänelaid ja Marianna Zvereva , Eesti Kunstiakadeemia





New European Bauhaus
beautiful | sustainable | together