



SLATE LITE™



TRANSLUCENT™

Instructions for use

02.12.2016



PREPERATION

All sheets of *Translucent* should be spread on a surface to check the vein of the material and be able to sort them to get a evenly distributed wall or floor application.



PROTECTION

To protect the natural stone surface apply the impregnator with a sponge roller in a very thin layer. Let the material dry for 30 minutes and then wipe off any access moisture to ensure no staining in the material surface. This can be done before and after application.

*Slate-Lite Special Impregnator
Slate-Lite Special Protection
Slate-Lite 2K Protection Wall
KLB PU 805 E
Sponge roller*



ADHERING

It is advisable to wear rubber gloves while working with *Translucent*. For a full surface adhesion apply the adhesive to the back of the material or to the wall on which it shall be glued to with a smooth scraper. Be sure that no bubbles appear between material and underground. Now apply the sheet to the required position and slightly press it onto the glued surface evenly. To reach the best possible result use a level and work from the bottom edge upwards or for flooring from one side to the other.

After 48 hours you can put full pressure on the material.

*Soudaseal MS Clear
Selfadhesive material*

*If required we can also assist in
advising other possible adhesives.*



CUTTING / DRILLING

The material can be cut and drilled with standard wood working materials. When cutting large amounts of material it is advisable to use diamond bladed tools.

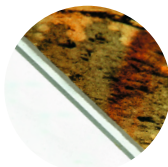
*Drill
Table Saw
Circular Handsaw
Jugsaw*



REMAINS OF GLUE

If glue sticks come on the sheets, you can carefully remove them with the *Slate-Lite Special Cleaner*. Almost all types of adhesives can be removed in this way.

*Slate-Lite Special Cleaner
Cloth*



CARRIER MATERIAL

For better stability and light distribution, the material can be glued to glass or acrylic. Especially acrylic plates with a dairy coloring have proven to be effective since they distribute the light effectively.

*Acryly glass
Glass plate*